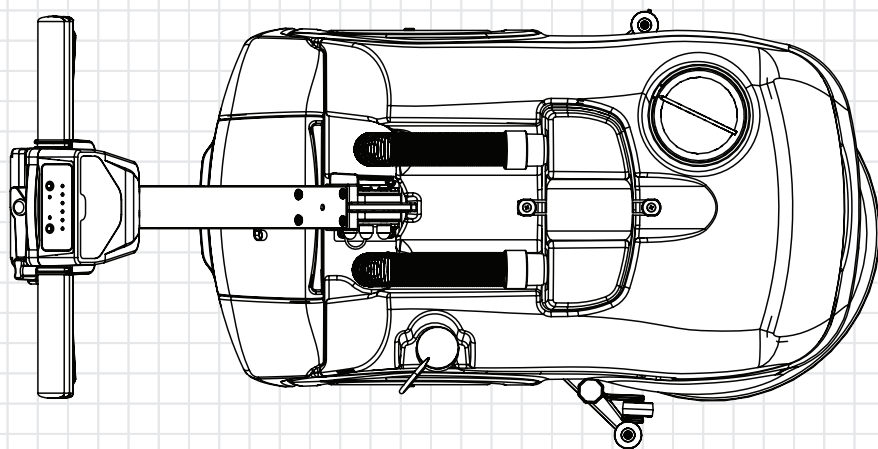
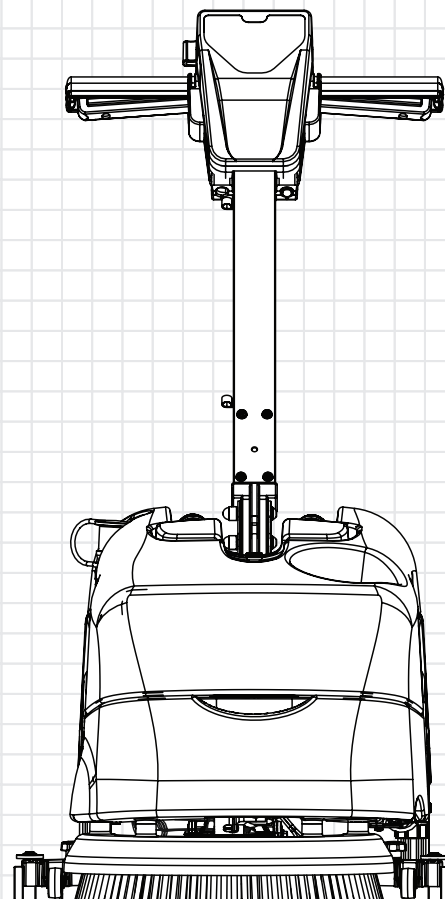
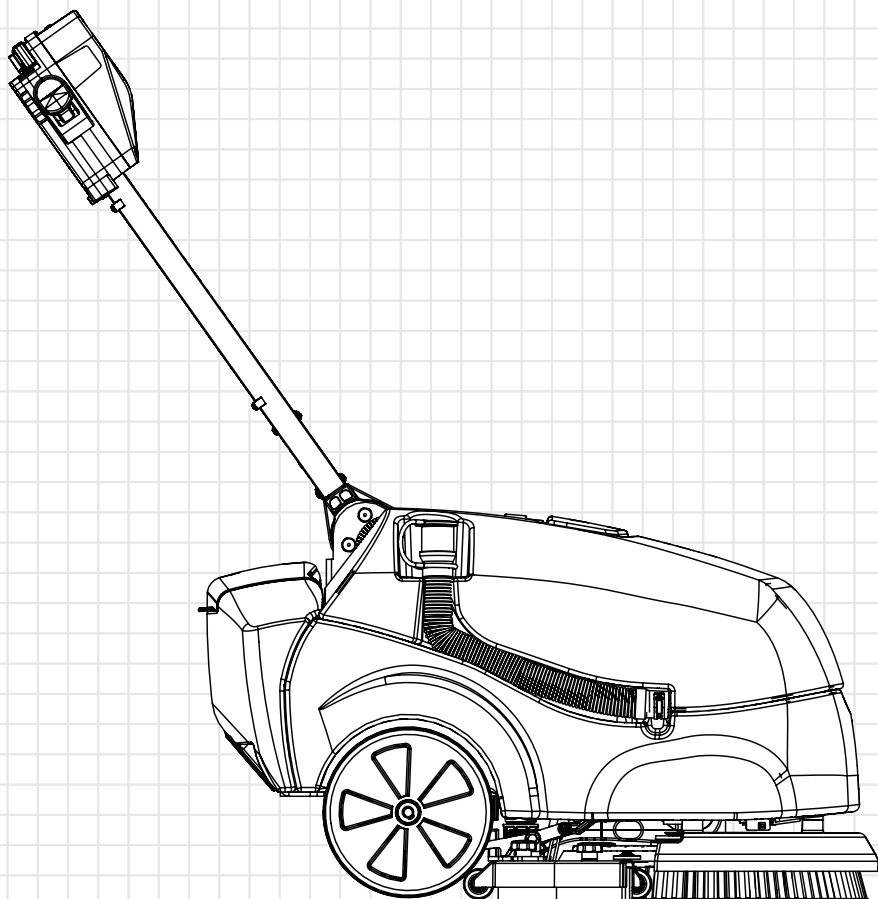


TTB1840NX



Service Engineer Exploded Drawings



DISCLAIMER:

These drawings are for part order reference only and intended for service engineers use.

The installation of Genuine Numatic spare parts should only be executed by Certified Numatic service engineers who specialised and familiar with all relevant safety regulations.

Numatic International Ltd do not accept responsibility or liability for any loss or damage to property or person if repairs or servicing of products are carried out by non-certified persons.

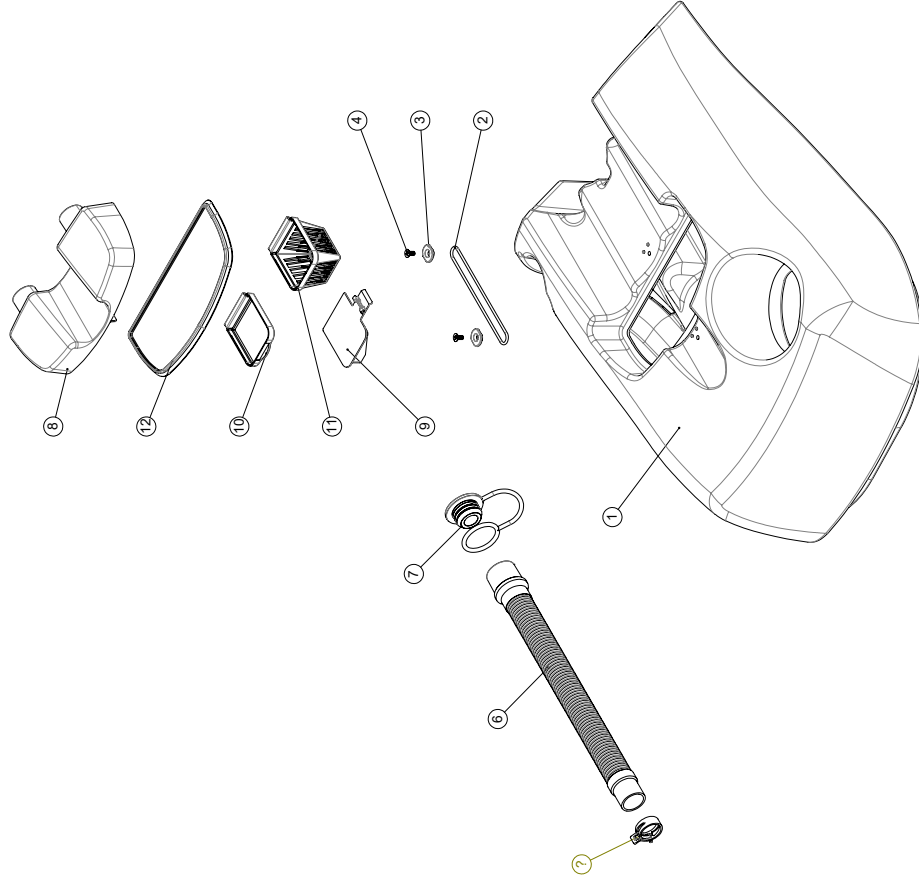
Specifications and parts are subject to change without notice.

Numatic International Spare Parts

Model No: TTB (& HTB) 1840 TOP TANK & SEPARATOR - EXPLODED

903831
DRAWING: DRW-32397 ISS A12
27/11/2019

NB: FOR WIRING SEE DRAWING: WD-0722



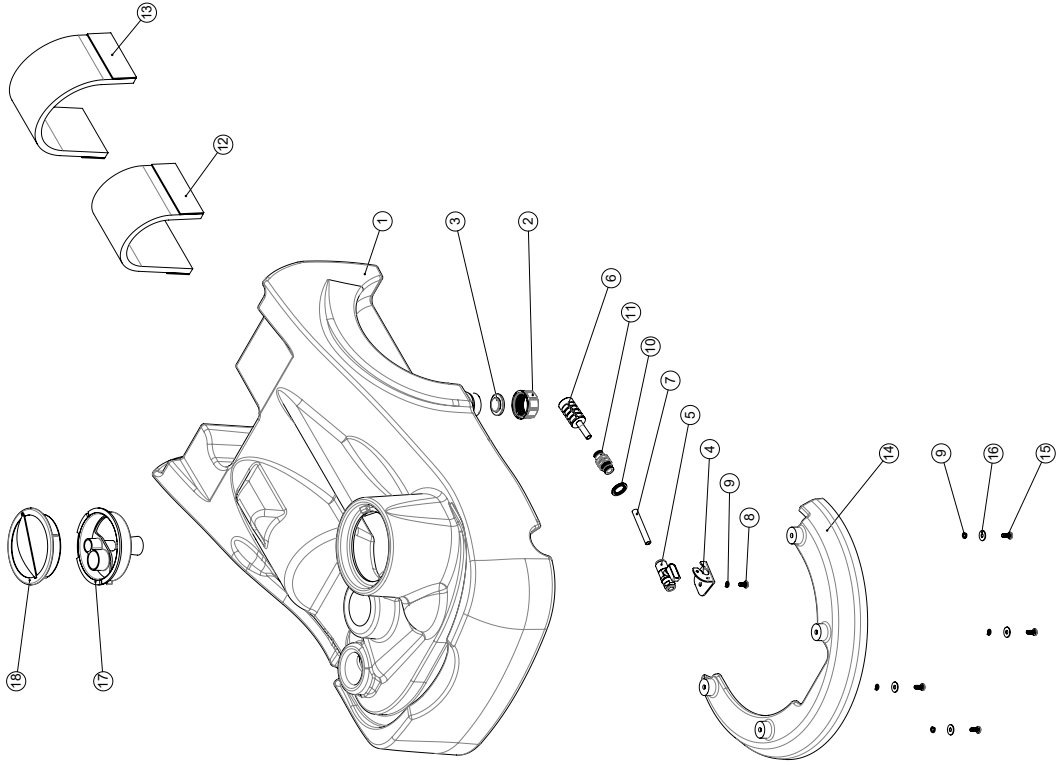
Numatic International Spare Parts

Model No: TTB (& HTB) 1840 TOP TANK & SEPARATOR - EXPLODED

| ITEM NO. | PART NUMBER | DESCRIPTION | QTY | COMMENTS: |
|----------|-------------|---|-----|-----------|
| 1 | 903302 | TTB 1840 TOP TANK (GRAPHITE) | 1 | |
| 2 | 208715 | O RING (3mmDIA.95mm) | 1 | |
| 3 | 237397 | O RING CLIP MOULDING (BLACK) | 2 | |
| 4 | 291008 | M5 X 10MM LONG POZI PAN COUNTERSUNK STAINLESS STEEL SCREW | 2 | |
| 5 | 208471 | HEAVY DUTY SPRING BAND CLAMP (27MM) [NOMINAL DIA 32MM - ABBEY CLAMPS E770320] | 1 | |
| 6 | 208466 | TTB 1840 DUMP HOSE | 1 | |
| 7 | 903325 | 32MM HOSE CAP RED | 1 | |
| 8 | 237230 | TTB 1840 SEPARATOR MOULDING | 1 | |
| 9 | 237231 | TTB 1840 SHUT OFF FLAP | 1 | |
| 10 | 237232 | TTB 1840 AIR FILTER PANEL | 1 | |
| 11 | 237411 | TOP TANK FILTER | 1 | |
| 12 | 237418 | TTB 1840 SEPARATOR SEAL MOULDING | 1 | |

903830, 913406
 DRAWING: DRW-32395 ISS:A21
 16/12/2020

Numatic International Spare Parts
Model No: TTB (& HTB) 1840 AND 36V 1840 NX BOTTOM TANK - EXPLODED



Numatic International Spare Parts
Model No: TTB (& HTB) 1840 AND 36V 1840 NX BOTTOM TANK - EXPLODED

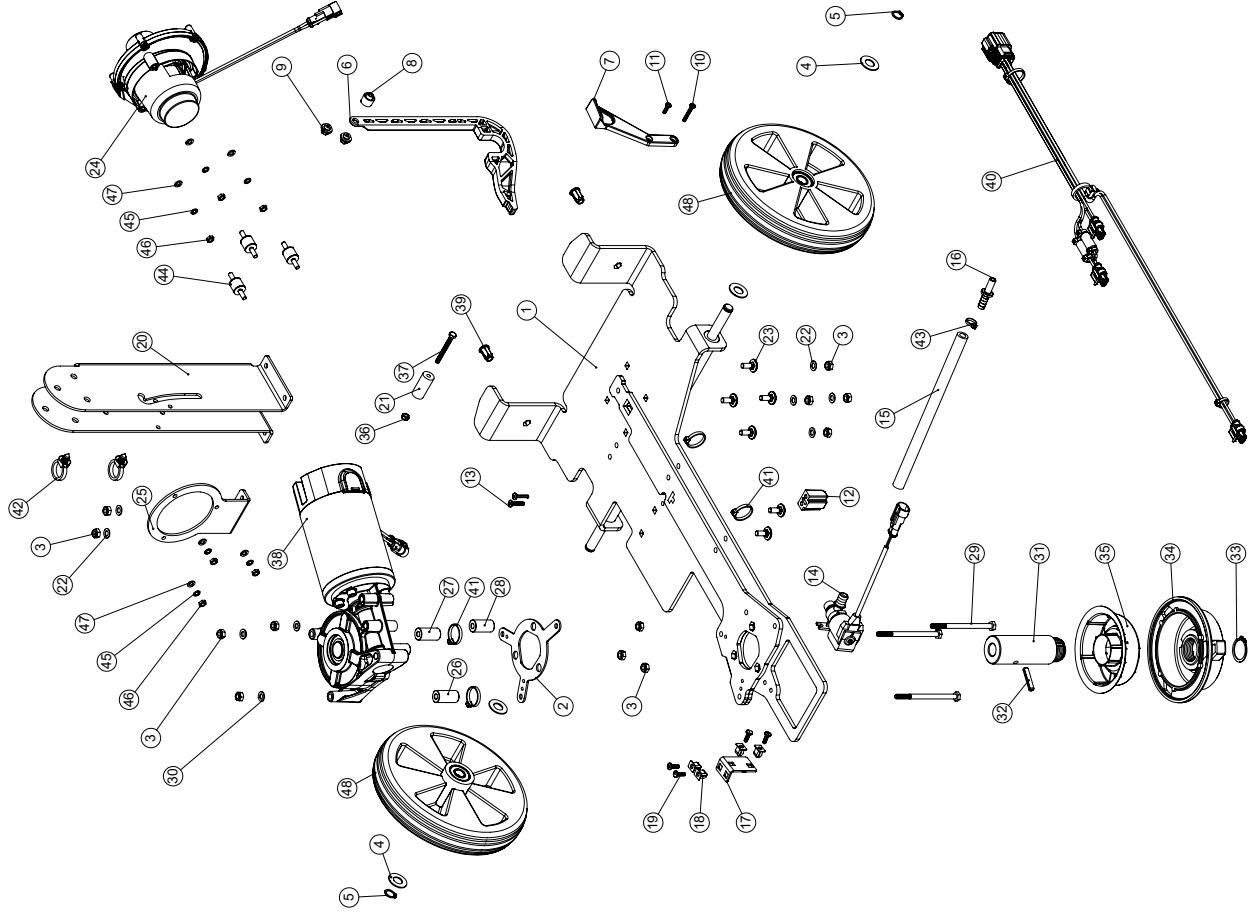
| ITEM NO. | PART NUMBER | DESCRIPTION | QTY | COMMENTS: |
|----------|-------------|---|-----|---|
| 1 | 237228 | TTB 1840 CLEAN TANK | 1 | |
| 2 | 906415 | CAP MOULDING | 1 | |
| 3 | 905467 | SEALING BUNG | 1 | |
| 4 | 392125 | TTB 1840 TAP PLATE | 1 | |
| 5 | 216260 | MINI BALL VALVE | 1 | |
| 6 | 303961 | TANK FILTER ASSEMBLY | 1 | |
| 7 | 303960 | TANK FILTER TUBE | 1 | |
| 8 | 219668 | M5 X 10MM LONG POZI PAN STAINLESS STEEL SCREW | 1 | |
| 9 | 219861 | M5 SINGLE COIL STAINLESS STEEL WASHER | 5 | |
| 10 | 208525 | BONDED SEAL | 1 | |
| 11 | 902109 | 8MM PUSH FIT BRASS BULKHEAD FITTING | 1 | |
| 12 | 208479 | TTB 1840 FOAM PAD (100 X 320) | 1 | 903930 TTB (& HTB) 1840 BOTTOM TANK ASSEMBLY |
| 13 | 208478 | TTB 1840 FOAM PAD (90 X 370) | 1 | 903930 TTB (& HTB) 1840 BOTTOM TANK ASSEMBLY |
| | 913373 | 36V TTB 1840 NX FOAM PAD (90 X 370) | 1 | 913406 TTB (& HTB) 36V 1840 NX BOTTOM TANK ASSEMBLY |
| 14 | 237233 | TTB 1840 DECK MOULDING (GRAPHITE) | 1 | |
| 15 | 219740 | M5 X 12MM LONG STAINLESS STEEL POZI PAN SCREW | 4 | |
| 16 | 219644 | M5 FORM G STAINLESS STEEL WASHER | 4 | |
| 17 | 303985 | TTB 1840 FILLER CAP ASSEMBLY | 1 | |
| 18 | 903544 | FILLER CAP LID (RED) | 1 | |

Numatic International Spare Parts

Model No: TTB 1840 36V BASE - EXPLODED

NB: FOR WIRING SEE DRAWING - DRW-32476 (911781)

911698
DRAWING: DRW-32280 ISS A14
23/09/2021



Numatic International Spare Parts

Model No: TTB 1840 36V BASE - EXPLODED

| ITEM NO. | PART NUMBER | DESCRIPTION | QTY. |
|----------|-------------|---|------|
| 1 | 911863 | TTB 1840 36V CHASSIS WELDED ASSEMBLY Z/PL | 1 |
| 2 | 429127 | NUT RETAINING PLATE Z/PL | 1 |
| 3 | 219642 | M6 STAINLESS STEEL NYLON INSERT NUT | 12 |
| 4 | 208490 | TTB 1840 WHEEL WASHER | 4 |
| 5 | 219345 | 12MM EXTERNAL CIRCLIP | 2 |
| 6 | 903926 | TTB 1840 SQUEEGEE LIFT ARM (RED) | 1 |
| 7 | 903879 | TTB 1840 SQUEEGEE LIFT HANDLE (RED) | 1 |
| 8 | 237240 | TTB 1840 LIFT SPACER | 1 |
| 9 | 237241 | TTB 1840 SCREW END | 2 |
| 10 | 219602 | No6 X 1 INCH LONG POZI PAN PLASTITE SCREW (Z/PL) | 1 |
| 11 | 219667 | No6 X 1/2" LONG PLASTITE SCREW | 1 |
| 12 | 237532 | UPPER LIFT BLOCK | 1 |
| 13 | 219568 | No8.3/4 INCH LG. POZI-PAN. SCREW. STAINLESS STEEL. PLASTITE | 2 |
| 14 | 902949 | TERMINATED SOLENOID CABLE. BLACK. 125.0M5.2.24 | 1 |
| 15 | 303962 | SOLENOID TUBE (230MM) | 1 |
| 16 | 206796 | BARBED CONNECTOR | 1 |
| 17 | 908213 | SOLENOID PLATE (TT/TTB1840) | 1 |
| 18 | 900986 | NYLON GROMMET NUT (PLASTIC INSERT TO SUIT No 8 PLASTITE SCREW) | 4 |
| 19 | 219569 | No8 X 1/2 INCH LONG POZI PAN STAINLESS STEEL PLASTITE SCREW | 4 |
| 20 | 911704 | TTB 1840 36V HANDLE MOUNTING BRACKET | 1 |
| 21 | 208465 | TTB 1840 HANDLE SPACER | 1 |
| 22 | 219560 | M6 FORM B STAINLESS STEEL WASHER | 6 |
| 23 | 291103 | M6 X 16 COACH BOLT S/S | 6 |
| 24 | 911975 | CINDERSON VAC HOUSING - ASSEMBLY | 1 |
| 25 | 911864 | TTB1840 36V VAC MOTOR BRACKET ZIPL | 1 |
| 26 | 208461 | 30MM GEARBOX SPACER | 1 |
| 27 | 208460 | 29MM GEARBOX SPACER | 1 |
| 28 | 208459 | 28MM GEARBOX SPACER | 1 |
| 29 | 291021 | M6 X 90MM LONG STAINLESS STEEL HEXAGONAL HEAD BOLT | 3 |
| 30 | 219870 | M6 FORM A WASHER STAINLESS STEEL | 3 |
| 31 | 208447 | TTB 1840 DRIVE SHAFT | 1 |
| 32 | 291079 | 6MM X 30MM STAINLESS STEEL ROLL PIN | 1 |
| 33 | 230048 | 26MM EXTERNAL CIRCLIP | 1 |
| 34 | 904758 | CHUCK (TO SUIT FLUID CHANNEL) | 1 |
| 35 | 903639 | FLUID CHANNEL | 1 |
| 36 | 219633 | M5 STAINLESS STEEL NYLON INSERT NUT | 1 |
| 37 | 219706 | M5 X 45MM LONG STAINLESS STEEL HEXAGONAL BOLT | 1 |
| 38 | 911475 | 36V DC BRUSH DRIVEMOTOR/GEARBOX ASSEMBLY (18.67:1 RATIO) CW TE SUPERSEAL 2 WAY CONNECTOR | 1 |
| 39 | 911737 | M6 FULL HEX FLAT HEAD OPEN RIVETNUT (NHSF-M650) | 2 |
| 40 | 911643 | LOOM ASSEMBLY 6CRT | 1 |
| 41 | 220007 | BLACK CABLE TIE | 4 |
| 42 | 911965 | 170MM LONG X 5MM WIDE BLACK PUSH FIT CABLE TIE (213253000) | 2 |
| 43 | 220844 | WHITE CABLE TIE | 1 |
| 44 | 913335 | P2004.15-15 M5 MALE TO MALE ANTIVIBRATION MOUNT | 3 |
| 45 | 291084 | M5 SHAKEPROOF WASHER STAINLESS STEEL | 6 |
| 46 | 219721 | M5 STAINLESS STEEL FULL NUT | 6 |
| 47 | 219355 | M5 FORM A STAINLESS STEEL WASHER | 6 |
| 48 | 914430 | 1840 WHEEL ASSEMBLY | 2 |

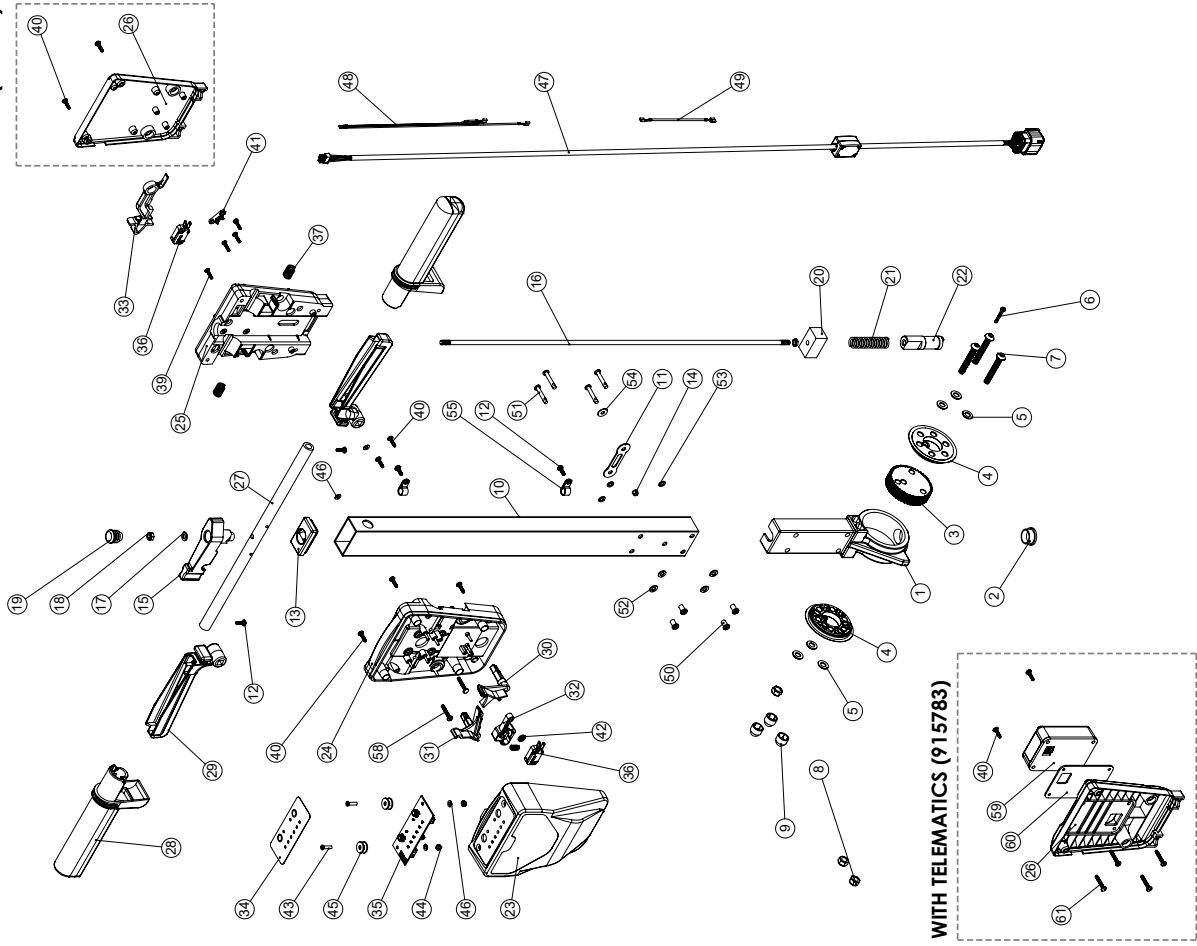
Numatic International Spare Parts

Model No: TT1840 36V HANDLE ASSEMBLY - EXPLODED

NB: FOR WIRING SEE DRAWING: DRW-32476 (911781)

911565, 915783
DRAWING: DRW-32358 ISS:A11
10/01/2023

**WITHOUT TELEMATICS
(911565)**



Numatic International Spare Parts

Model No: TT1840 36V HANDLE ASSEMBLY - EXPLODED

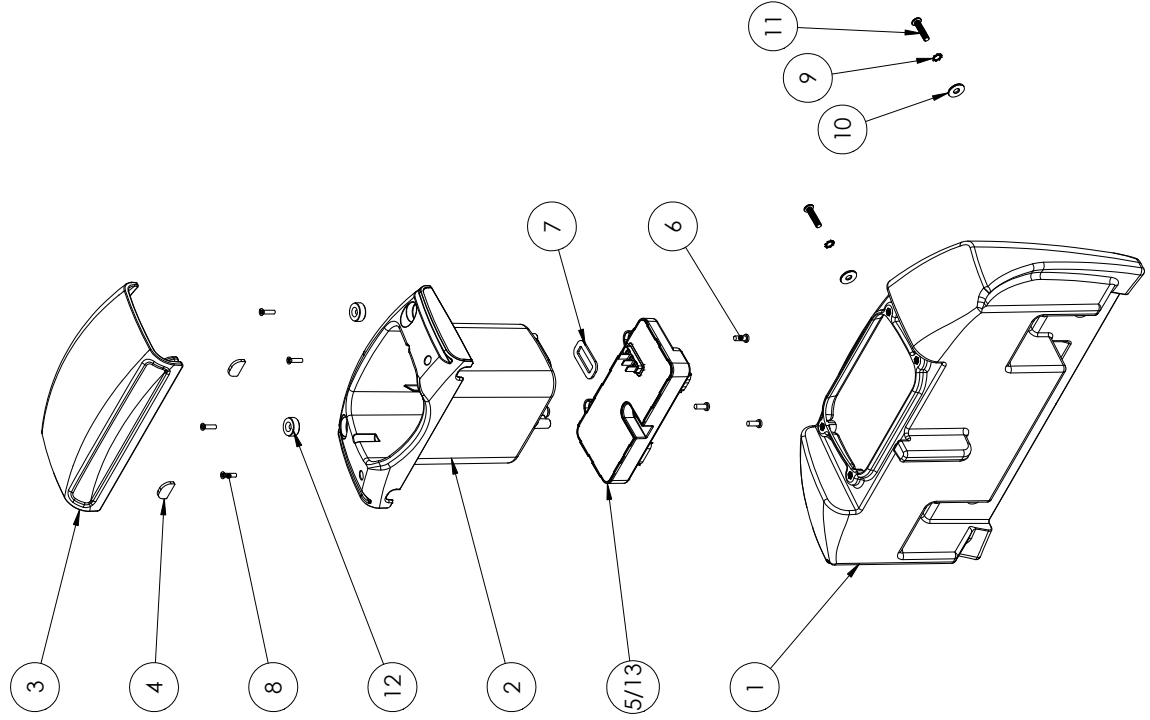
| ITEM NO. | PART NUMBER | DESCRIPTION | COMMENTS: | QTY |
|----------|-------------|--|----------------------------|-----|
| 1 | 900398 | HANDLE CASTING MACHINED (HNS VERSION) | | 1 |
| 2 | 229099 | 25MM DIA HOLE PLUG | | 1 |
| 3 | 900397 | MINI ADJUSTMENT GEAR | | 1 |
| 4 | 900396 | ADJUSTMENT GEAR SPACER | | 2 |
| 5 | 219578 | M8 FORM A STAINLESS STEEL WASHER | | 6 |
| 6 | 291150 | N06 X 1 INCH LONG POZI PAN SCREW S/S | | 1 |
| 7 | 219922 | M8 X 50MM LONG SOCKET BUTTON HEAD STAINLESS STEEL BOLT | | 3 |
| 8 | 219639 | M8 STAINLESS STEEL NYLON INSERT NUT | | 3 |
| 9 | 903260 | M8 BOLT AND NUT CAP | | 3 |
| 10 | 330027 | TT1840 HANDLE TUBE (600MM) PROCESSED PAINTED SILVER | | 1 |
| 11 | 229139 | CABLE CLAMP | | 1 |
| 12 | 219270 | N08 X 1/2 INCH LONG POZI PAN SELF TAP SCREW | | 4 |
| 13 | 903546 | HANDLE PLUG MOLDING (RED) | | 1 |
| 14 | 229009 | BLANKING PLUG | | 1 |
| 15 | 903545 | ADJUSTMENT LEVER MOLDING (RED) | | 1 |
| 16 | 215029 | 610MM HANDLE LOCKING ROD | | 1 |
| 17 | 219493 | M6 NYLON WASHER | | 1 |
| 18 | 219642 | M6 STAINLESS STEEL NYLON INSERT HALF NUT | | 1 |
| 19 | 229638V | 19MM BLACK TUBE END STOP | | 1 |
| 20 | 229030 | ANTI VIBRATION PAD | | 1 |
| 21 | 229138 | SPRING 15.85MM OD 76.5MM FREE LENGTH | | 1 |
| 22 | 229073 | GEAR LOCKING PIN | | 1 |
| 23 | 911562 | TT1840 36V FRONT COVER MOLDING | | 1 |
| 24 | 227576 | TALC FILLED FRONT INNER HALF MOLDING | | 1 |
| 25 | 227577 | REAR INNER HALF MOLDING (GRAPHITE TALC FILLED) | | 1 |
| 26 | 227579 | REAR COVER MOLDING | | 1 |
| 27 | 912496 | TT1840 HANDLE REAR COVER - TELEMATICS | 911565 ONLY 915783 ONLY | 1 |
| 28 | 338269 | GROSS TUBE | | 1 |
| 29 | 903547 | HAND GRIP MOLDING | | 2 |
| 30 | 227595 | TRIGGER MOLDING (RED) | | 2 |
| 31 | 227585 | LEFT HAND SWITCH OPERATING LEVER MOLDING | | 1 |
| 32 | 227586 | RIGHT HAND SWITCH OPERATING LEVER MOLDING | | 1 |
| 33 | 227587 | CENTRE SWITCH OPERATING LEVER MOLDING | | 1 |
| 34 | 227584 | INTERLOCK LEVER MOLDING | | 1 |
| 35 | 911348 | TT1840 36V CONTROL PANEL OVERLAY | | 1 |
| 36 | 911543 | ASSEMBLY 1840 DISPLAY | | 1 |
| 37 | 229463 | SNAP ACTION SWITCH | | 2 |
| 38 | 219803 | TRIGGER COMPRESSION SPRING | | 2 |
| 39 | 227666 | BLANKING PLUG | | 1 |
| 40 | 219107 | N06.5/8 INCH LG POZI PAN SCREW Z/PL PLASTITE | | 4 |
| 41 | 219370 | N08 X 5/8 INCH LONG PLASTITE STAINLESS STEEL SCREW | | 8 |
| 42 | 229669 | LOLINE HANDLE CABLE CLAMP | | 1 |
| 43 | 219805 | 4MM SPIREX | | 1 |
| 44 | 219407 | M4 X 16MM LONG POZI PAN COUNTERSUNK SCREW | | 2 |
| 45 | 219887 | M4 STAINLESS STEEL NYLON INSERT NUT | | 4 |
| 46 | 219497 | M5 NYLON WASHER | | 4 |
| 47 | 219688 | M4 FORM A STAINLESS STEEL WASHER | | 4 |
| 48 | 911746 | LOOM ASSEMBLY CRT | | 1 |
| 49 | 911754 | LOOM ASSEMBLY ZCRT | | 1 |
| 50 | 321627 | LINK WIRE BLACK 120.0M/75 FASTON PIGGYBACK | | 1 |
| 51 | 911793 | M5 X 10MM BUTTON HEAD ST 6 LOBE PIN BARREL NUT (T29) | | 4 |
| 52 | 911795 | M5 X 30 A2 ST/ST 6 LOBE PIN BARREL BOLT WITH NYLON PATCH (T25) | | 4 |
| 53 | 219870 | M6 FORM A WASHER STAINLESS STEEL | | 4 |
| 54 | 219355 | M5 FORM A STAINLESS STEEL WASHER | | 3 |
| 55 | 219644 | M5 FORM G STAINLESS STEEL WASHER | | 1 |
| 56 | 219393 | P CLIP | | 2 |
| 57 | 219609 | M6 HALF NUT | | 1 |
| 58 | 219604 | SWITCH COMPRESSION SPRING | | 1 |
| 59 | 219811 | N08 X 1 INCH LONG POZI PAN SELF TAP SCREW | | 2 |
| 60 | 911544 | TELEMATICS MODULE ASSEMBLY - ANTHRACITE GREY | 915783 ONLY | 1 |
| 61 | 912151 | ADHESIVE PAD - TELEMATICS | 915783 ONLY | 1 |
| 62 | 219569 | N08 X 1/2 INCH LONG POZI PAN STAINLESS STEEL TAP TITE SCREW | 915783 ONLY | 1 |

Numatic International Spare Parts

Model No.: BATTERY MODULE - EXPLODED ASSEMBLY

NB: FOR WIRING SEE DRAWING: DRW-32476 (911781)

911736,919266
DRAWING: DRW-32183 ISS:A05
02/05/2024



Numatic International Spare Parts

Model No.: BATTERY MODULE - EXPLODED ASSEMBLY

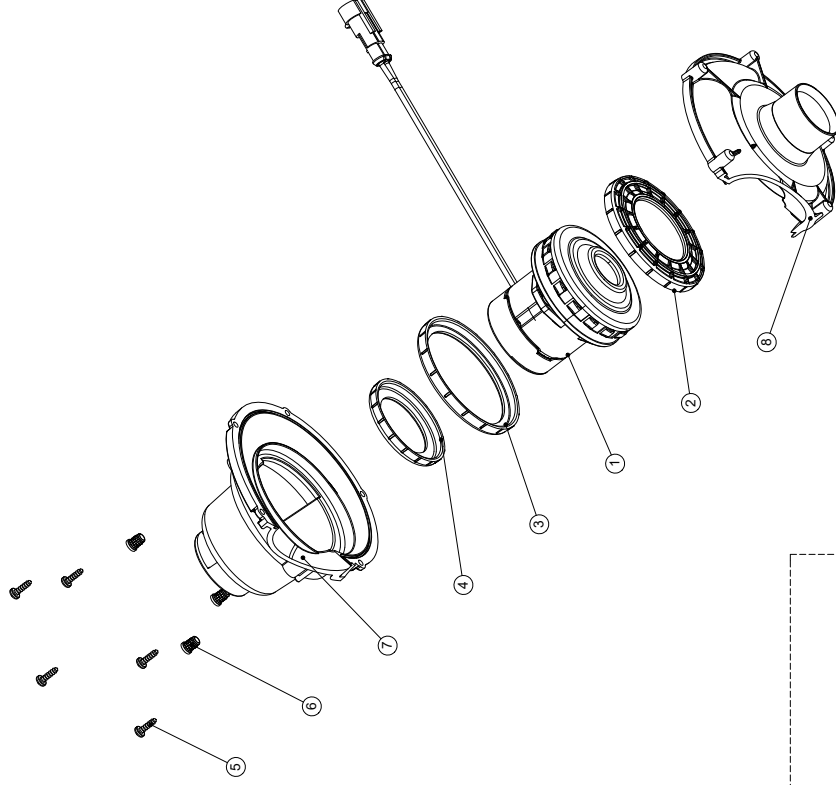
| ITEM NO. | PART NUMBER | DESCRIPTION | DEFAULT/ (911736) QTY. | XR(919266) QTY. | COMMENTS: |
|----------|-------------|--|------------------------|-----------------|--------------------------|
| 1 | N/A | BATTERY MODULE - ROTOMOULDING - POST PROCESSED | 1 | 1 | |
| 2 | 911559 | BATTERY MODULE - BATTERY HOUSING | 1 | 1 | |
| 3 | 911751 | BATTERY MODULE - LID | 1 | 1 | |
| 4 | 911755 | BATTERY MODULE - PLASTIC INSERT | 2 | 2 | |
| 5 | 911193 | ASSEMBLY: 1840 CONTROL | 1 | - | |
| 6 | 291152 | NO8. 1/2 INCH LG. T20.SCREW.ZIPL.PLASTITE | 3 | 3 | TORQUE TO 2.6Nm ± 0.15Nm |
| 7 | 905074 | GASKET-MODULE-ELECTRONICS | 1 | 1 | |
| 8 | 219407 | M4 X 16MM LONG POZI PAN COUNTERSUNK SCREW | 4 | 4 | |
| 9 | 902353 | M6 EXTERNAL SHAKEPROOF WASHER STAINLESS STEEL | 2 | 2 | |
| 10 | 219647 | M6 FORM G STAINLESS STEEL WASHER | 2 | 2 | |
| 11 | 911775 | M6 X 25MM SOCKET BUTTON HEAD BOLT S/S NYLOCK PATCH | 2 | 2 | |
| 12 | 912351 | M4 SPACER | 2 | 2 | |
| 13 | 917793 | ASSEMBLY: 1840 CONTROL XR | - | 1 | |

Numatic International Spare Parts

Model No: CINDERSON VAC HOUSING - EXPLODED ASSEMBLY

911975, 915486
DRAWING: DRW-32197 ISS:A09
15/06/2022

NB: FOR WIRING SEE DRAWING: DRW-32476 (911781)



Numatic International Spare Parts

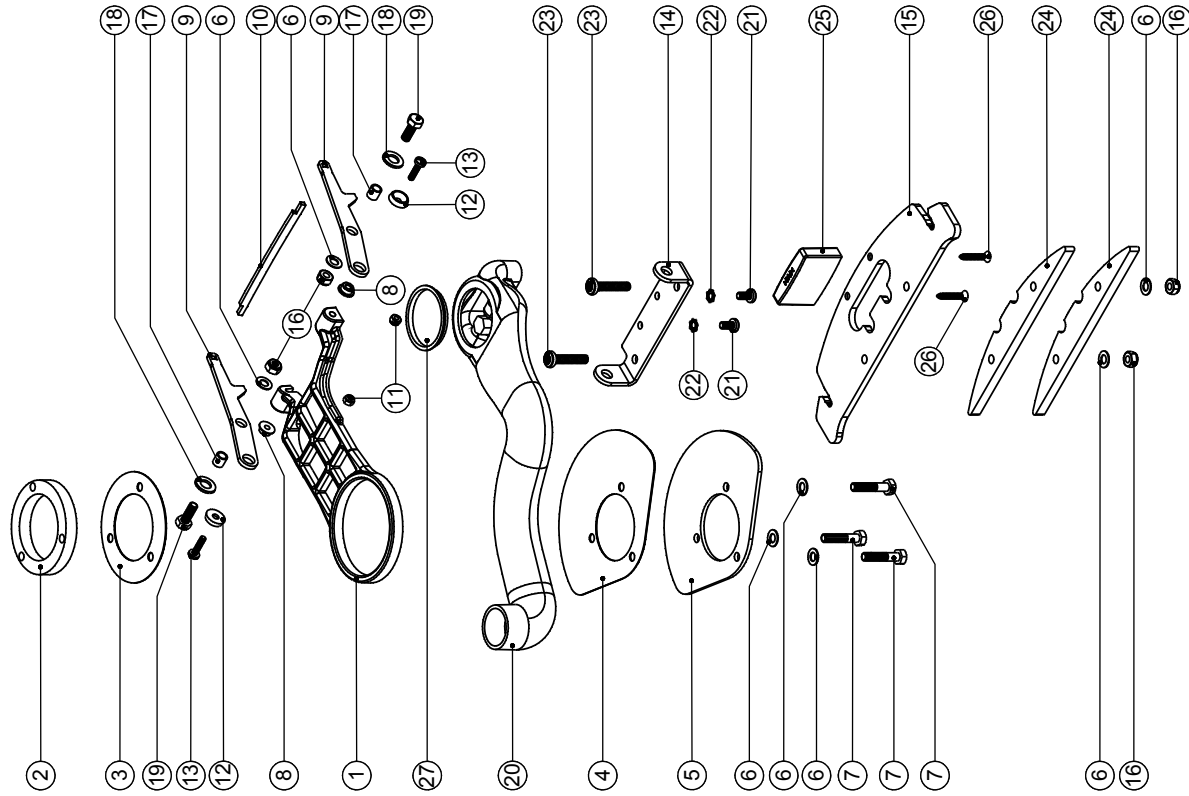
Model No: CINDERSON VAC HOUSING - EXPLODED ASSEMBLY

| ITEM NO. | PART NUMBER | DESCRIPTION | QTY | COMMENTS: |
|----------|-------------|--|-----|-----------|
| 1 | 911741 | CINDERSON B74-LS4015010K-021 100W VAC MOTOR CIW TE SUPERSEAL 2 WAY CONNECTOR | 1 | 911975 |
| 2 | 915308 | CINDERSON B74-LS4015020K-113 200W VAC MOTOR | 1 | 915486 |
| 3 | 911555 | CINDERSON VAC HOUSING - BOTTOM GASKET | 1 | |
| 4 | 911556 | CINDERSON VAC HOUSING - MID GASKET | 1 | |
| 5 | 911557 | CINDERSON VAC HOUSING - TOP GASKET | 1 | |
| 6 | 219852 | N06 X 1/2 LONG POZI PAN STAINLESS STEEL SELF TAP SCREW | 5 | |
| 7 | 219109 | M5 BRASS INSERT | 3 | |
| 8 | 911553 | CINDERSON VAC HOUSING - TOP | 1 | |
| | 911554 | CINDERSON VAC HOUSING - BOTTOM | 1 | |

Numatic International Spare Parts

Model No: SWING ARM ASSEMBLY EXPLODED DRAWING

234839.330042
DRAWING: DRW-10739 ISS:A09
05/07/2019



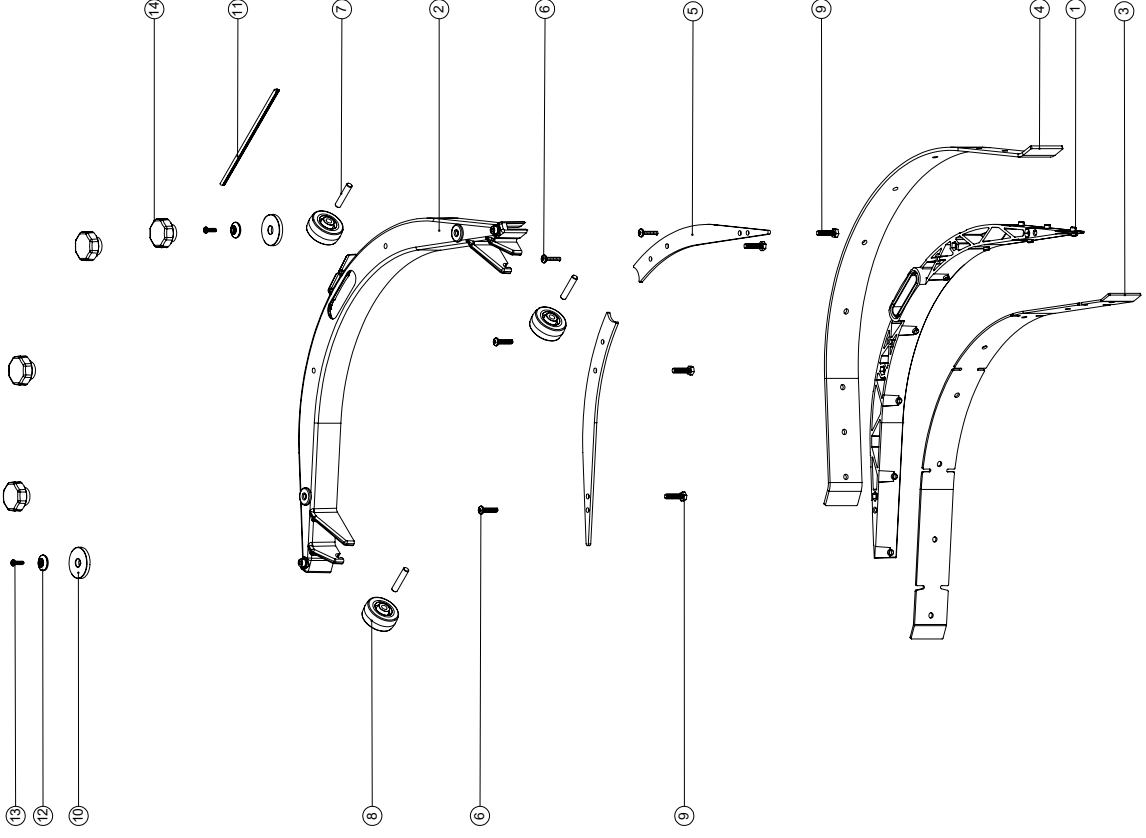
Numatic International Spare Parts

Model No: SWING ARM ASSEMBLY EXPLODED DRAWING

| ITEM NO. | PART No. | DESCRIPTION | QTY. |
|----------|----------|---|------|
| 1 | 429133 | TTB 1840 SWING ARM PAINTED | 1 |
| 2 | 208449 | TTB 1840 SWING ARM CENTRE PIVOT | 1 |
| 3 | 208491 | TTB 1840 NYLON DISC | 1 |
| 4 | 208482 | TTB 1840 SWING ARM NYLON PLATE | 1 |
| 5 | 429126 | TTB 1840 SWING ARM BOTTOM PLATE | 1 |
| 6 | 219560 | M6 FORM B STAINLESS STEEL WASHER | 7 |
| 7 | 291022 | M6 X 30MM LONG STAINLESS STEEL HEXAGONAL HEAD BOLT | 3 |
| 8 | 237265 | PIVOT BUSH | 2 |
| 9 | 392120 | TT/TTTB 1840 SQUEEGEE PIVOT ARM | 2 |
| 10 | 392124 | TTB 1840 SQUEEGEE LIFT PLATE | 1 |
| 11 | 219687 | M4 STAINLESS STEEL NYLON INSERT NUT | 2 |
| 12 | 219573 | SCREW INSULATOR | 2 |
| 13 | 219862 | M4 X 16MM LONG POZI PAN STAINLESS STEEL SCREW | 2 |
| 14 | 392119 | PIPE CONNECTING BRACKET | 1 |
| 15 | 429129 | TTB 1840 SQUEEGEE SKID PLATE | 1 |
| 16 | 219642 | M6 STAINLESS STEEL NYLON INSERT NUT | 4 |
| 17 | 208475 | 8MM SPACER | 2 |
| 18 | 219578 | M8 FORM A STAINLESS STEEL WASHER | 2 |
| 19 | 219719 | M6 X 16MM LONG HEXAGONAL STAINLESS STEEL HEAD BOLT | 2 |
| 20 | 903535 | FLUID PIPE PROCESSED (GRAPHITE) (SALES USE 902531) | 1 |
| 21 | 219668 | M5 X 10MM LONG POZI PAN STAINLESS STEEL SCREW | 2 |
| 22 | 291020 | M5 STAINLESS STEEL EXTERNAL SHAKEPROOF LOCK WASHER | 2 |
| 23 | 219984 | M6 X 30MM LG POZI-PAN STAINLESS STEEL MACHINE SCREW | 2 |
| 24 | 429131 | TTB 1840 ADDITIONAL WEIGHT | 2 |
| 25 | 237531 | LOWER LIFT BLOCK | 1 |
| 26 | 291086 | No.8 X 1 A2 S/ST PZ COUNTER SUNK. SELF TAP TYPE AB | 2 |
| 27 | 901880 | PROTECTION PLUG DIA 43MM | 1 |

577761
DRAWING: DRW-7011 ISS:A16
27/11/2019

Numatic International Spare Parts
Model No: TTB 1840 SQUEEGEE EXPLODED DRAWING ASSEMBLY



Numatic International Spare Parts
Model No: TTB 1840 SQUEEGEE EXPLODED DRAWING ASSEMBLY

| POS. | ITEM NO. | DESCRIPTION | QTY. |
|------|----------|---|------|
| 1 | 237235 | TTB 1840 SQUEEGEE INNER MOULDING | 1 |
| 2 | 237236 | TTB 1840 SQUEEGEE OUTER MOULDING | 1 |
| 3 | 903288 | TTB 1840 SQUEEGEE FRONT BLADE | 1 |
| 4 | 903291 | TTB 1840 SQUEEGEE REAR BLADE | 1 |
| 5 | 429130 | TTB 1840 SQUEEGEE SIDE PLATE Z/PL | 2 |
| 6 | 219568 | NO8.3/4 INCH LG.POZI-PAN.SCREW.STAINLESS STEEL.PLASTITE | 4 |
| 7 | 208610 | TTB 1840 SQUEEGEE AXLE | 3 |
| 8 | 208454 | TTB 1840 SQUEEGEE WHEEL | 3 |
| 9 | 291029 | M5.20MM LG.HEX.SCREW S/S | 4 |
| 10 | 237266 | BUFFER WHEEL | 2 |
| 11 | N/A | SQUEEGEE SEAL EXTRUSION | 1 |
| 12 | 208603 | NYLON FINISHING WASHER (BLACK) | 2 |
| 13 | 291053 | 3.5 X 12MM POZI PAN PLASTITE SCREW S/S | 2 |
| 14 | 208455 | TTB 1840 SQUEEGEE KNOB | 4 |



Numatic International Limited (Head Office)

Chard, Somerset TA20 2GB, UNITED KINGDOM

Tel: 01460 68600 numatic.com

Numatic International GmbH

Fränkische Straße 15-19, 30455 Hannover, DEUTSCHLAND

Tel: +49 (0) 511 984 2160 numatic.de

Numatic International Denmark

Fränkische Straße 15-19, 30455 Hannover, DEUTSCHLAND

Tel: +45 (0) 316 40808 numatic-online.dk

Numatic International S.A.S

13/17 rue du Valengelier, EAE la Tuilerie, 77500 Chelles, FRANCE

Tel: +33 (0) 164 726 161 numatic.fr

Numatic International BV

Vennootsweg 15, 2404 CG, Alphen aan den Rijn, NEDERLAND

Tel: +31 (0) 172 467 999 numatic.nl

Numatic International Schweiz AG.

Sihlbruggstrasse 3A, 6340 Baar, SCHWEIZ

Tel: +41 (0) 41 768 0760 numatic.ch

Numatic International (PTY) Ltd.

Cnr. 16th & Pharmaceutical Road, Randjes Park, Midrand 1685, SOUTH AFRICA

Tel: +27 (0) 861 686 284 numatic.co.za

Numatic International ULDA

Rua Francisco da Silva Duarte, nº79,

4475-269 Santa Maria de Avioso, Castelo da Maia, PORTUGAL

Tel: +351 220 047 700 numatic.pt

Numatic International Spain, S.L.U.

Av. Baix Llobregat, 5-7, Oficina bajos 1 (Parc Negocis Mas Blau II)

08820 El Prat de Llobregat (Barcelona), SPAIN

Tel: +34 93 647 22 22 numatic.es

Numatic International Italy S.R.L

Via Luigi Galvani, 2, Z.I. Talponedo, 33080 Porcia (PN), ITALY

Tel: +39 (0) 434 046 211 numatic.it