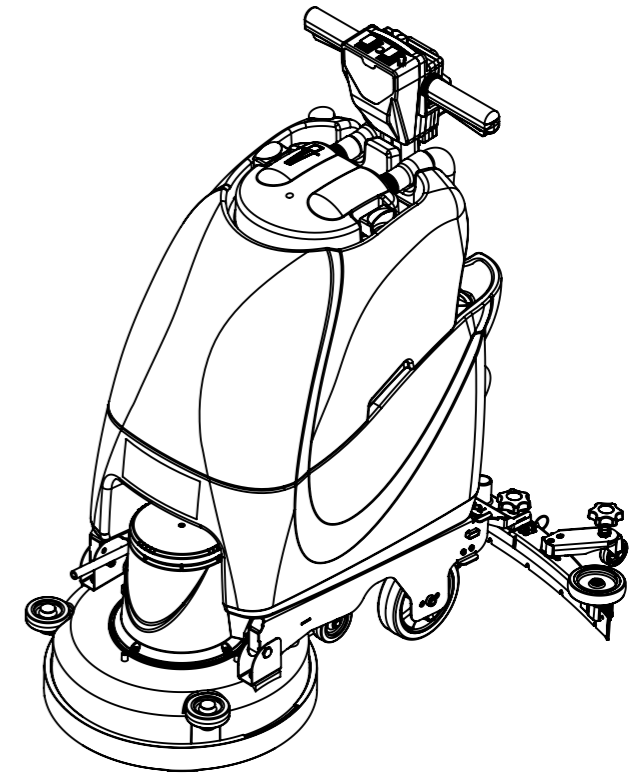
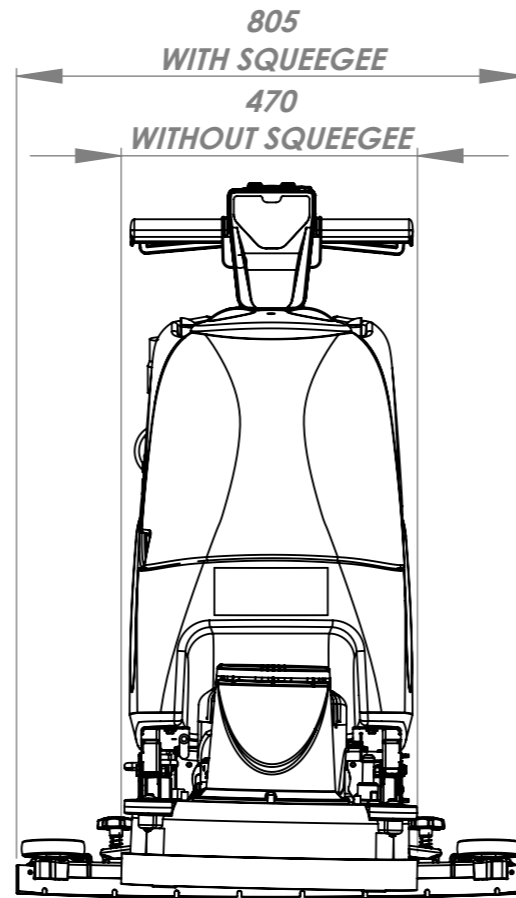
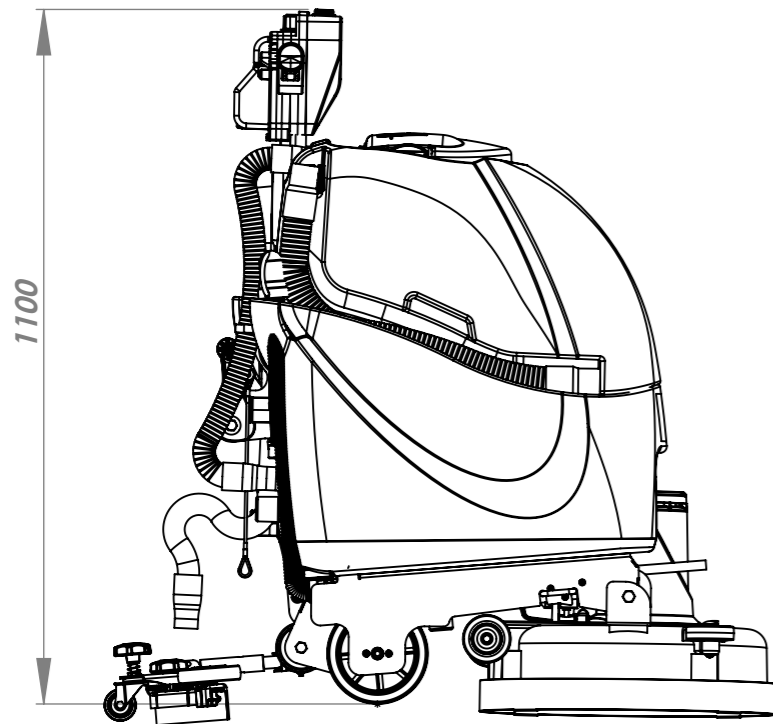
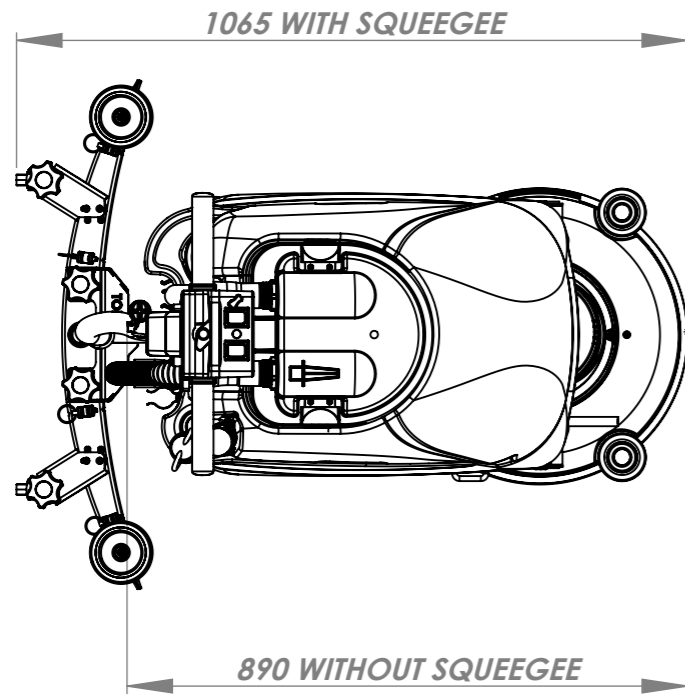


THIRD ANGLE PROJECTION



BRUSH WEIGHT	31kg - 37kg 68lbs - 81lbs	WATER FLOW - AVERAGE	0-2L/min 0-0.53 US gal/min
BRUSH PRESSURE	23 - 27 g/cm ² 0.303 - 0.391 lbs/in ²	GROSS WEIGHT (i.e. with liquid)	107kg 236lbs
PAD PRESSURE	24 - 29 g/cm ² 0.349 - 0.416 lbs/in ²	NETT WEIGHT (i.e. NO liquid)	67kg 148lbs
CLEANING AREA	800m ² /HOUR @ 2.0 kph 8610ft ² /HOUR @ 1.25 mph	CLEANING RANGE	42m 138ft
BRUSH MOTOR POWER	1500W	POWER SOURCE	230/120/100 V 50/60 Hz
BRUSH SPEED	150 rpm @ 50Hz 180 rpm @ 60Hz	HEIGHT	1100mm 43.3in
BRUSH DIA	450mm 18in	LENGTH	890mm (1065mm) 35in (42in)
PAD DIA	400mm 16in	WIDTH	470mm (805mm) 18.5in (31.7in)
VAC MOTOR - MAX POWER	1200W	SQUEEGEE LENGTH	805mm 31.7in
VAC MOTOR - SUCTION @ SQUEEGEE	240 mbar	SOUND PRESSURE LEVEL	76 ± 3 dB
VAC MOTOR - AIRFLOW @ SQUEEGEE	35 l/sec 9.2 US gal/sec	VIBRATION LEVEL	HAV 1.4 m/s ² HAV 4.6 ft/s ²
WATER CAPACITY	40L 10.5 US gal	TT4045 (TT1117)	

All components must be ROHS compliant.

TOOL NUMBER:

WEIGHT:

Numatic INTERNATIONAL LTD
MILLFIELD ROAD, CHARD, SOMERSET
TA20 2GB ENGLAND

20.0 THE EXAMPLE SHOWN DETAILS THE METHOD USED FOR IDENTIFYING CRITICAL (INSPECTION) DIMENSIONS WHERE APPLICABLE

TOLERANCES:- LINEAR: 0 DECIMAL PLACES = +/- 1.0mm
1 DECIMAL PLACE = +/- 0.25mm ANGULAR:-
(UNLESS OTHERWISE STATED) 2 DECIMAL PLACES = +/- 0.05mm +/- 0.5 DEGREE

TITLE:- TT 4045 TECHNICAL SPECIFICATION

DIMENSIONS IN MILLIMETERS **MATERIAL:-** ITEM No(s):- 244475

NOT TO SCALE **FINISH:-** DRG No:- DRW-17074

A01 NEW DRAWING
REVISION: CHANGE DETAIL:

DRAWN: rianp
APPD: NP
DATE: 22/11/2014

THIS DRAWING IS COPYRIGHT AND IS THE PROPERTY OF NUMATIC INTERNATIONAL LTD. AND MUST NOT BE USED WITHOUT THEIR KNOWLEDGE NOR COMMUNICATED TO ANY PERSON OR COMPANY.

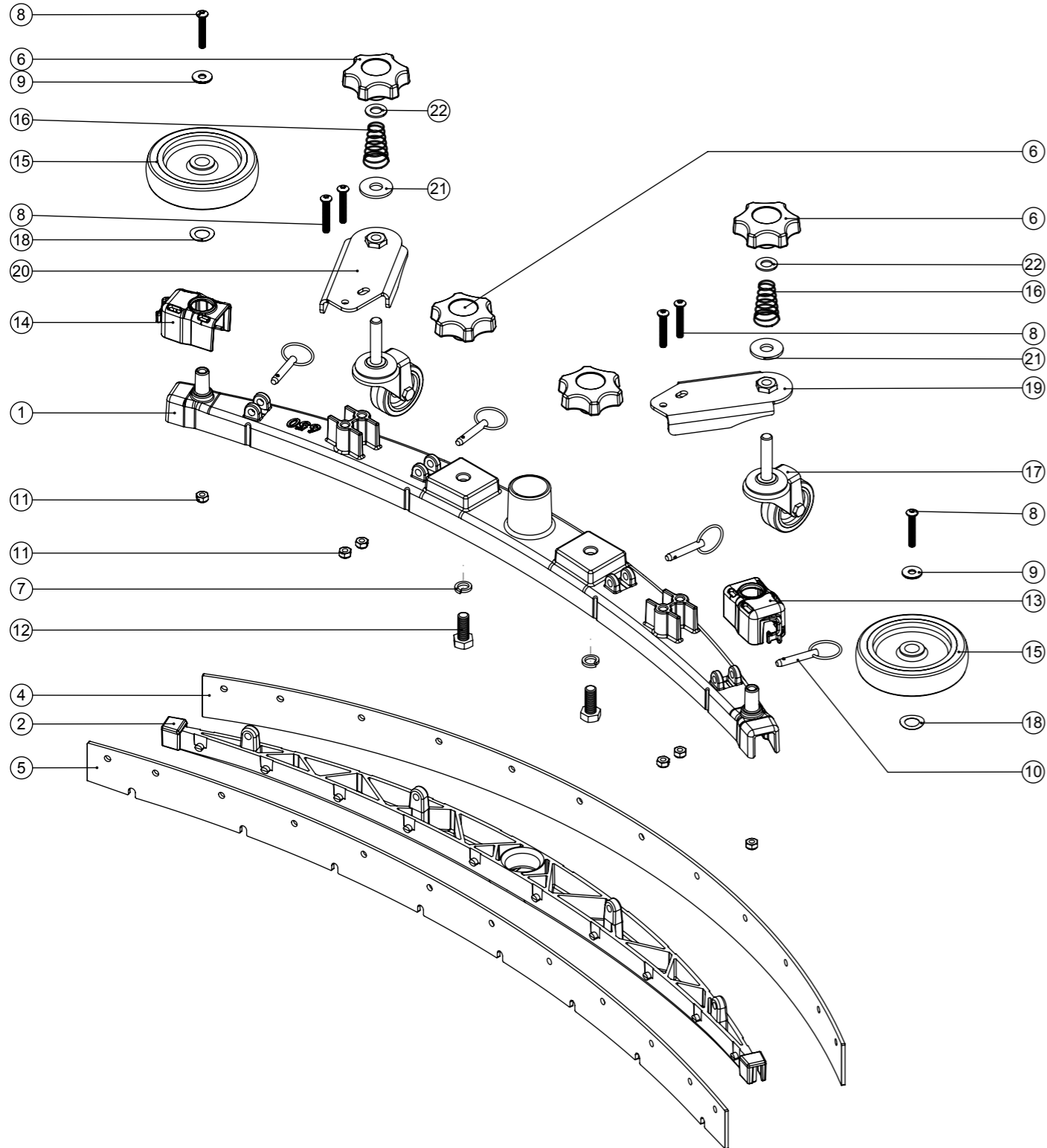
PRINT SIZE
A3

Numatic International Spare Parts

Model No: 650 TWINTEC ALUMINIUM FLOOR TOOL (38MM HOSE, RED TRIM, SERILOR BLADES)

Internal Code: 903347
 DRAWING: DRW-22621 ISS:A05
 MS5 24/10/2016

NB: FOR WIRING SEE DRAWING: N/A



Numatic International Spare Parts

Model No: 650 TWINTEC ALUMINIUM FLOOR TOOL (38MM HOSE, RED TRIM, SERILOR BLADES)

Provisional

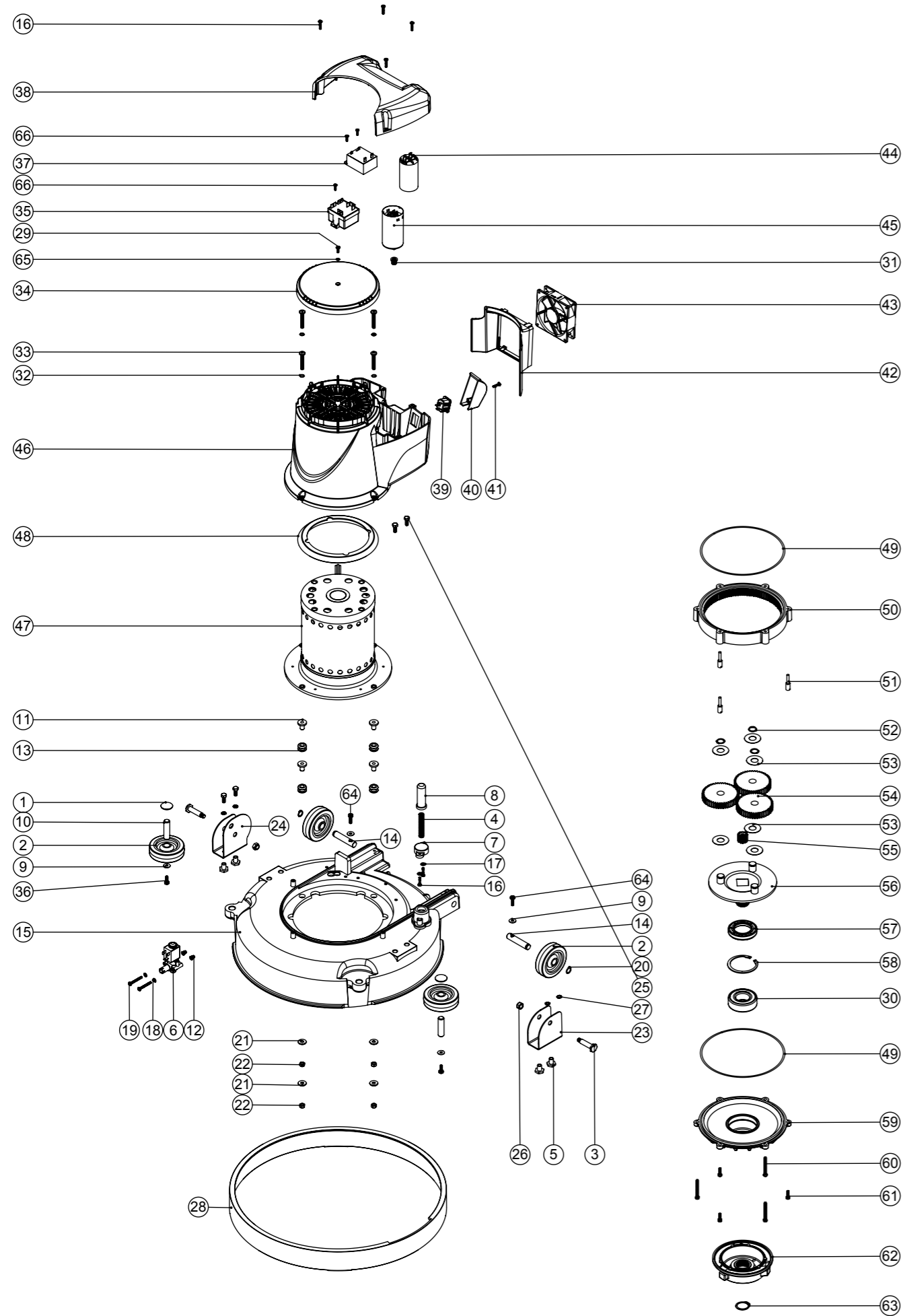
ITEM:	PART No:	Description	Qty
1	208198	(650MM SCRUB WIDTH) ALUMINIUM SQUEEGEE CASTING (38MM HOSE FITTING)	1
2	903345	(650MM SCRUB WIDTH) RED BLADE HOLDER MOULDING (SLOPING PROFILE) (32MM & 38MM HOSE FITTING)	1
	900518	650 REPLACEMENT SERILOR GREEN POLYURETHANE BLADES SET	
4	208970	(650MM SCRUB WIDTH) REPLACEMENT (4.0MM / 35-45-35 SHORE A) REAR LAMINATED SERILOR POLY/BLADE (847MM LONG)	1
5	208967	(650MM SCRUB WIDTH) REPLACEMENT (3.2MM / 40 SHORE A) FRONT MONOLAYER SERILOR POLY/BLADE (819MM LONG)	1
6	903281	M10 LOBE KNOB (RED)	4
7	219899	M10 SINGLE COIL STAINLESS STEEL WASHER	2
8	219933	M6 X 35MM SOCKET BUTTON HEAD BOLT STAINLESS STEEL	6
9	219647	M6 FORM G STAINLESS STEEL WASHER	2
10	206953	DETENT PINS	4
11	219642	M6 STAINLESS STEEL NYLON INSERT NUT	6
12	219909	M10 X 25MM LONG HEXAGONAL STAINLESS STEEL SCREW	2
13	237322	RIGHT HAND FLOOR TOOL CLIP MOULDING	1
14	237323	LEFT HAND FLOOR TOOL CLIP MOULDING	1
15	208796	4 INCH WHEEL	2
16	229175	CONICAL SPRING	2
17	208497	50MM DIAMETER GREY TPR TYRED SWIVEL CASTORS C/W M10 X 45 SWAGED STEM.	2
18	219891	13MM WAVEY WASHER	2
19	304523	ADJUSTABLE FLOOR TOOL CASTOR PLATE RHS WELD ASSY	1
20	304522	ADJUSTABLE FLOOR TOOL CASTOR PLATE LHS WELD ASSY	1
21	291124	M10 PENNY WASHER STAINLESS STEEL	2
22	219903	M10 FORM A STAINLESS STEEL WASHER	2

Numatic International Spare Parts

Model No: 450MM MAINS DECK ASSEMBLY EXPLODED DRAWING

234956
DRAWING: DRW-13427 ISS:A21
11/08/2016

NB: FOR WIRING SEE DRAWING: DRW-18548, DRW-17307, DRW-17309, DRW-18468, DRW-11855, DRW-12474, DRW-12545



Numatic International Spare Parts

Model No: 450MM MAINS DECK ASSEMBLY EXPLODED DRAWING

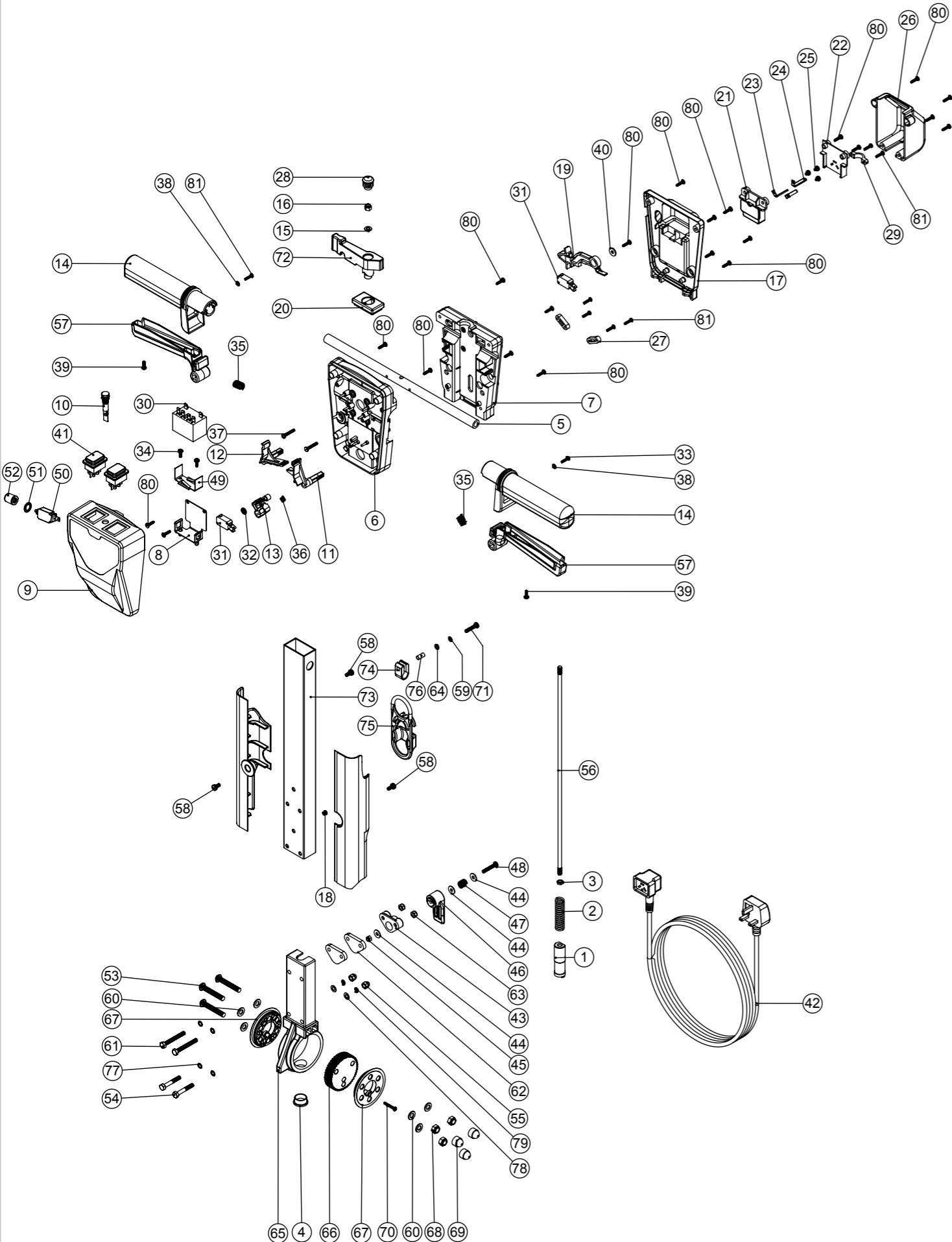
ITEM:	PART No:	Description	Comments	QTY.
1	204021	12.7MM STAINLESS STEEL HUB CAP		2
2	204068	3 INCH GREY WHEEL		4
3	206236	PIVOT PIN		2
4	219394	COMPRESSION SPRING		1
5	219606	BRACKET SPACER		4
6	220348	SOLENOID VALVE 240V 50/60HZ		1
	220349	SOLENOID VALVE 220V60HZ		1
	220350	SOLENOID VALVE 110V 50/60HZ		1
7	223242	PLUNGER MOUNTING PLATE MOULDING		1
8	229128	PLUNGER		1
9	219644	M5 FORM G STAINLESS STEEL WASHER		4
10	206013	BUFFER WHEEL PIN		2
11	208011	MOTOR MOUNTING SPACER		4
12	219009	M4 BRASS TAPPEX INSERT		2
13	229025	STANDARD GROMMET		4
14	229382	REAR WHEEL PIN		2
15	229258	TT 345 GRAPHITE BASE MOULDING		1
16	219568	NO8.3/4 INCH LG.POZI-PAN.SCREW.STAINLESS STEEL.PLASTITE		6
17	219355	M5 FORM A STAINLESS STEEL WASHER		2
18	219688	M4 FORM A STAINLESS STEEL WASHER		2
19	219703	M4 X 35MM LONG STAINLESS STEEL POZI PAN SCREW		2
20	219345	12MM EXTERNAL CIRCLIP		2
21	219647	M6 FORM G STAINLESS STEEL WASHER		4
22	219642	M6 STAINLESS STEEL NYLON INSERT NUT		4
23	392249	DECK MOUNT RH		1
24	392248	DECK MOUNT BRACKET		1
25	219719	M6 X 16MM LONG HEXAGONAL STAINLESS STEEL HEAD BOLT		4
26	219639	M8 STAINLESS STEEL NYLON INSERT NUT		2
27	902353	M6 EXTERNAL SHAKEPROOF WASHER STAINLESS STEEL		4
28	229644	450MM DIAMETER SPLASH SKIRT MOULDING		1
29	219890	M4 X 12MM LONG POZI PAN STAINLESS STEEL SCREW		1
30	230094	62MM O/D X 30MM I/D X 20MM BEARING (WITH SEALS)		1
31	219453	M8 MULTISERT		1
32	291060	M6 SHAKEPROOF STAINLESS STEEL WASHER		4
33	219982	M6 X 40MM LONG POZI PAN STAINLESS STEEL SCREW		4
34	229971	CAP MOULDING		1
35	206823	230V SINGLE SPEED VOLTAGE RELAY		1
	206822	110V/120V VOLTAGE RELAY		1
	208416	120V RELAY	NACE MACHINES ONLY	1
36	291132	M5 X 16MM LONG STAINLESS STEEL POZI PAN SEMS SCREW		2
37	206753	UNIVERSAL POWER SUPPLY		1
38	237071	NPR / TT GRAPHITE LID MOULDING		1
39	220584	RENDAR CLIP IN PLUG		1
40	229213	PLUG COVER		1
41	219914	NO6 X 5/8 INCH LONG POZI-PAN PLASTITE STAINLESS STEEL SCREW		1
42	229972	FAN GUARD MOULDING		1
43	205072	PROCESSED 12V DC BRUSHLESS FAN		1
44	220876	20 MFD MOTOR RUN CAPACITOR (450V)	220V & 230V MACHINES	1
	208211	80uF MOTOR RUN CAPACITOR	120V MACHINES	1
	208219	70uF RUN CAPACITOR	110V MACHINES	1
45	208265	MOTOR START CAPACITOR 98 MFD	220V & 230V MACHINES	1
	208210	MOTOR START CAPACITOR 480 MFD C/W RESISTOR & M8 STUD	110V & 120V MACHINES	1
46	328132	GRAPHITE MOTOR COWL MOULDING PRINTED	PRINTED NUMATIC	1
	330008	TWINTEC MAINS MOTOR COWL MOULDING (GRAPHITE) (NO LOGO)	NO PRINT	1
47	205217	COMBINED INDUCTION MOTOR 4POLE 220-240V 50Hz		1
	205219	COMBINED INDUCTION MOTOR 4POLE 220V 60Hz		1
	205220	COMBINED INDUCTION MOTOR 4POLE 120V 60Hz		1
	205221	COMBINED INDUCTION MOTOR 4POLE 110V 50Hz		1
48	227556	TOP MOTOR GASKET		1
49	230001	V OIL SEAL		2
50	214115	GEAR BOX MID SECTION		1
51	208207	GEARBOX FASTENER WITH SLOT		3
52	230015	15MM EXTERNAL CIRCLIP		3
53	230215	35MM X 15 I/D ALUMINIUM WASHER		6
54	230013	48 TOOTH SPUR GEAR(STANDARD SPEED 50/60HZ)		3
55	230027	12 TOOTH PINION GEAR (STANDARD SPEED)		1
56	230291	PLANET CARRIER & PIN ASSEMBLY (50HZ STANDARD SPEED)		1
57	230158	VITON OIL SEAL (BROWN)		1
58	230200	62MM INTERNAL CIRCLIP		1
59	230208	DIE CAST BOTTOM PLATE ASSY	INCLUDE: 57, 58, 30	1
60	219706	M5 X 45MM LONG STAINLESS STEEL HEXAGONAL BOLT		3
61	219904	M5 X16MM LONG HEXAGONAL STAINLESS STEEL BOLT		3
62	230207	DIE CAST CHUCK MACHINED		1
63	230048	26MM EXTERNAL CIRCLIP		1
64	291133	M5 X 20MM LONG STAINLESS STEEL POZI PAN SEMS SCREW		2
65	291145	M4 SHAKEPROOF WASHER STAINLESS STEEL		1
66	291061	No6 X 1/2 INCH LONG POZI PAN PLASTITE SCREW (STAINLESS STEEL)		3

Numatic International Spare Parts

Model No: TT4045 (TT1117) & TT4055 (TT1120) HANDLE ASSEMBLY

NB: FOR WIRING SEE DRAWING: DRW-18548, DRW-17307, DRW-17309, DRW-18468

Internal Code: 244495
 DRAWING: DRW-16831 ISS:A17
 PRO 10/03/2017



Numatic International Spare Parts

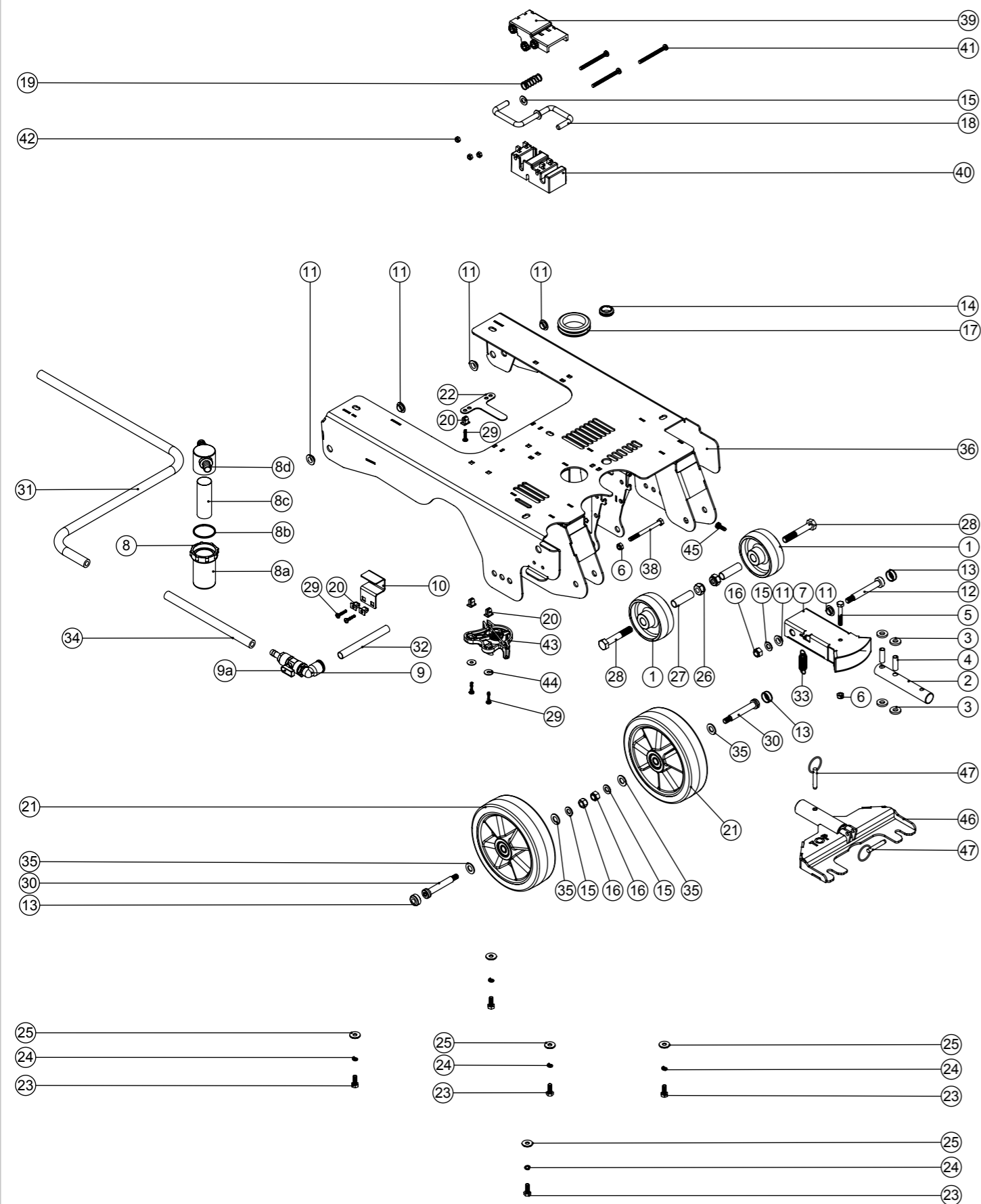
Model No: TT4045 (TT1117) & TT4055 (TT1120) HANDLE ASSEMBLY

ITEM:	PART No:	Description	Comments:	QTY.
1	229073	GEAR LOCKING PIN		1
2	229138	SPRING		1
3	219099	M6 HALF NUT		1
4	229099	25MM DIA HOLE PLUG		1
5	338269	CROSS TUBE		1
6	227576	FRONT INNER HALF MOULDING		1
7	229508	FLAME RETARDANT FRONT INNER HALF MOULDING	FLAME RETARDANT CSA SPEC	1
8	227577	REAR INNER HALF MOULDING		1
9	329484	MODIFIED REAR INNER HALF MOULDING (CSA SPEC)	FLAME RETARDANT CSA SPEC	1
10	303526	NUTSERTED RELAY MOUNTING BRACKET		1
11	229748	FRONT COVER MOULDING (MAINS & BATTERY)		1
12	229750	MAINS FRONT COVER MOULDING (C/B HOLE)	110V/50HZ MACHINES	1
13	229751	MAINS FRONT COVER MOULDING (C/B HOLE)(FLAME RETARDANT)	120V/60HZ FLAME RETARDENT MACHINES	1
14	220812	230V NEON INDICATOR & RED LENS		1
15	220813	120V NEON INDICATOR & RED LENS		1
16	227585	LEFT HAND SWITCH OPERATING LEVER MOULDING		1
17	227586	RIGHT HAND SWITCH OPERATING LEVER MOULDING		1
18	227587	CENTRE SWITCH OPERATING LEVER MOULDING		1
19	227580	HAND GRIP MOULDING		1
20	219493	M6 NYLON WASHER		2
21	219088	M6 NYLON INSERT NUT		1
22	227676	REAR COVER		1
23	229507	MAINS TYPE FLAME RETARDANT REAR COVER MOULDING	FLAME RETARDANT CSA SPEC	1
24	229009	BLANKING PLUG		1
25	227584	INTERLOCK LEVER MOULDING		1
26	227582	HANDLE PLUG MOULDING		1
27	903546	HANDLE PLUG MOULDING (RED)		1
28	227691	TERMINAL BLOCK		1
29	229510	FLAME RETARDANT TERMINAL BLOCK	FLAME RETARDANT CSA SPEC	1
30	227680	TERMINAL BLOCK COVER		1
31	229511	FLAME RETARDANT TERMINAL BLOCK COVER	FLAME RETARDANT CSA SPEC	1
32	206562	CONTACT PIN		2
33	206563	EARTH CONTACT PIN		1
34	219090	M4 X 8MM LONG POZI PAN SEMS SCREW		3
35	227678	SOCKET COVER		1
36	229512	FLAME RETARDANT INLET COVER	FLAME RETARDANT CSA SPEC	1
37	227008	BLACK CABLE CLAMP		2
38	20638V	19MM BLACK TUBE END STOP		1
39	216290	CABLE CLAMP		1
40	206575	240V / 25A RELAY		1
41	206576	100V-120V / 25A RELAY		1
42	229483	SNAP ACTION SWITCH		2
43	219805	4MM SPIREFIX		1
44	219107	NO6.5/8 INCH LG.POZI-PAN.SCREW.Z/PL.PLASTITE		1
45	219471	M4 X 12MM LONG POZI PAN SEMS SCREW		2
46	219803	TRIGGER COMPRESSION SPRING		2
47	219804	SWITCH COMPRESSION SPRING		1
48	219811	NO8 X 1 INCH LONG POZI-PAN SELF TAP SCREW		2
49	219206	M4 FORM A WASHER		2
50	219270	No8 X 1/2 INCH LONG POZI PAN SELF TAP SCREW		2
51	219005	M5 FORM G WASHER		1
52	270146	GREEN ILLUMINATED SWITCH + MEMBRANE		2
53	904042	SWITCH DPST RED ILLUMINATED WITH MEMBRANE 120/240V		2
54	236012	20.0M X 1.50MM X 3 CORE NUCABLE (UK PLUG)		1
55	236132	20M X 1.5MM X 3 CORE YELLOW CABLE X SOCKET (EURO PLUG)		1
56	236020	20.0M X 1.5MM X 3 CORE NUCABLE (SWISS PLUG)		1
57	236024	20.0M X 1.50MM X 3 CORE NUCABLE (SOUTH AFRICAN PLUG)		1
58	236068	20.0MT X 1.5MM X 3 CORE CABLE (16A SOCKET + 10A PLUG) AUSTRALIAN		1
59	236118	20.0M X 1.5MM X 3 CORE NUCABLE (16 AMP INDUSTRIAL PLUG)		1
60	236028	20.0M X 14AWG X 3 CORE YELLOW NUCABLE (CSA PLUG)		1
61	227806	CABLE RELEASE BASE MOULDING		1
62	903882	RED CABLE RELEASE BASE MOULDING		1
63	219644	M5 FORM G STAINLESS STEEL WASHER		3
64	219076	M5 NYLON INSERT NUT		1
65	227807	CABLE RELEASE TOP MOULDING		1
66	903883	RED CABLE RELEASE TOP MOULDING		1
67	206599	SPRING (REF:C5514370)		1
68	219720	M5 X 30MM LONG STAINLESS STEEL POZI PAN SCREW		1
69	206500	RELAY BRACKET		1
70	220440	8 AMP OVERLOAD	120V/60HZ OLDER BLUE MODELS	1
71	208550	15 AMP OVERLOAD	110V/50HZ & 120/60HZ MACHINES	1
72	219702	M10 INTERNAL LOCK WASHER	110V & 120V MACHINES	1
73	220459	OVERLOAD DUST COVER	110V & 120V MACHINES	1
74	219922	M8 X 50MM LONG SOCKET BUTTON HEAD STAINLESS STEEL BOLT		3
75	291125	M6 X 40 LONG HEX BOLT STAINLESS STEEL		2
76	219764	M6 STAINLESS STEEL DOME NUT		2
77	229461	440MM HANDLE LOCKING ROD		1
78	229500	TRIGGER MOULDING BLUE		2
79	227581	TRIGGER MOULDING (GREY)		2
80	903547	TRIGGER MOULDING (RED)		1
81	291131	M5 X 12MM LONG STAINLESS STEEL POZI PAN SEMS SCREW		3
82	291084	WASHER.M5.SHAKEPROOF.STAINLESS STEEL		1
83	219578	M8 FORM A STAINLESS STEEL WASHER		6
84	291128	M6 X 50 LONG HEX BOLT STAINLESS STEEL		2
85	392437	RETAINER SPACER		2
86	219642	M6 STAINLESS STEEL NYLON INSERT NUT		2
87	219355	M5 FORM A STAINLESS STEEL WASHER		1
88	900398	HANDLE CASTING MACHINED (HNS VERSION)		1
89	900397	MINI ADJUSTMENT GEAR		1
90	900396	ADJUSTMENT GEAR SPACER		2
91	219639	M8 STAINLESS STEEL NYLON INSERT NUT		3
92	903260	BOLT AND NUT CAP		3
93	291150	NO6 X 1 INCH LONG POZI PAN SCREW S/S		1
94	219575	M5 X 25MM LONG POZI PAN STAINLESS STEEL SCREW		1
95	227583	ADJUSTMENT LEVER MOULDING		1
96	903545	ADJUSTMENT LEVER MOULDING (RED)		1
97	903603	TGB/TTG 430MM PROCESSED ALI HANDLE PAINT SILVER		1
98	219743	CABLE CLEAT		1
99	902312	CABLE STRESS RELIEF		1
100	903192	SPIROL SPACER SP100 5MM NOM ID x 14MM		1
101	219544	M6 SHAKEPROOF WASHER		4
102	219560	M6 FORM B STAINLESS STEEL WASHER		2
103	219718	WASHER.M6.SPRING.STAINLESS STEEL		2
104	219370	No8 X 5/8 INCH LONG PLASTITE STAINLESS STEEL SCREW		21
105	219914	NO6.5/8 INCH LG.POZI-PAN.SCREW.STAINLESS STEEL.PLASTITE		7
106	237692	HANDLE CABLE COVER L/H		1
107	237693	HANDLE CABLE COVER R/H		1

Numatic International Spare Parts

Model No: TT4045 (TT1117) & TT4055 (TT1120) & TTB3045 CHASSIS ASSEMBLY

Internal Code: 244496
 DRAWING: DRW-16813 ISS:A10
 TB 28/06/2016



Numatic International Spare Parts

Model No: TT4045 (TT1117) & TT4055 (TT1120) & TTB3045 CHASSIS ASSEMBLY

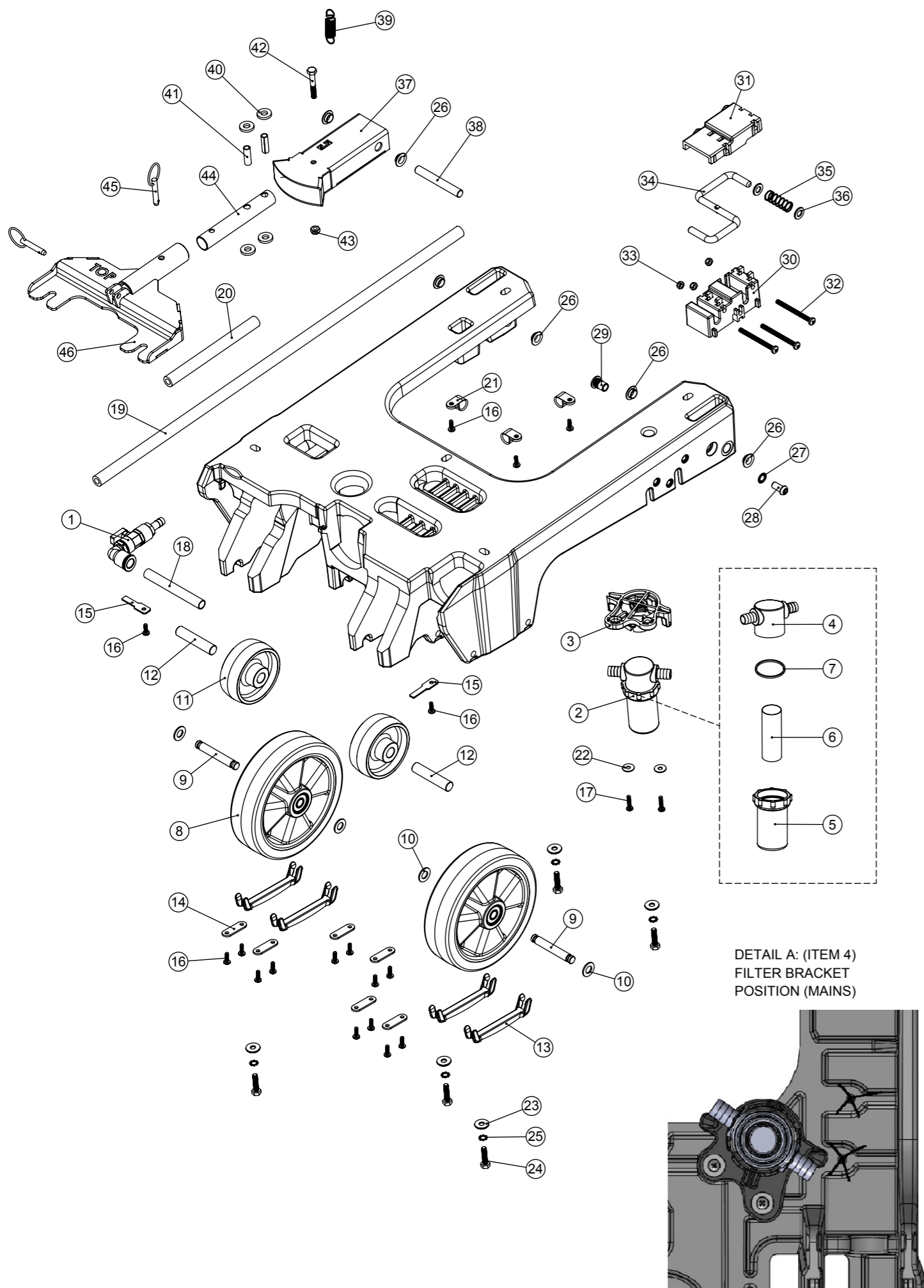
ITEM:	PART No:	Description	Comments:	QTY.
1	206713	80MM DIAMETER WHITE WHEEL		2
2	304356	FLOOR TOOL PIVOT TUBE		1
3	206964	SLIDE NYLON SPACER		4
4	206954	SPIRO SPACER		2
5	291125	M6 X 40 LONG HEX BOLT STAINLESS STEEL		1
6	219642	M6 STAINLESS STEEL NYLON INSERT NUT		2
7	304359	TT/TTB/4045/4055 SQUEEGEE MOUNT WELD ASSEMBLY		1
8	208888	EXTENDED STRAINER		1
8a	208890	EXTENDED STRAINER CLEAR BOWL	SPARE ITEM	1
8b	208830	STRAINER GASKET	SPARE ITEM	1
8c	208889	EXTENDED STRAINER 50 MESH SCREEN	SPARE ITEM	1
8d	208827	STRAINER BLACK TOP	SPARE ITEM	1
9	901543	12MM SWIVEL ELBOW PUSH FIT TO 10MM HOSE TAIL BALL VALVE ASSEMBLY		1
9a	901544	TAP HANDLE C/W COVER AND M3X6MM SCREW (SPARE ITEM)	SPARE ITEM	1
10	392314	10MM TAP BRACKET		1
11	208312	IGUS BEARING (GFM 101205)		6
12	208574	M8 X 10 X 60 SHOULDER BOLT		1
13	237632	SHOULDER BOLT COVER		3
14	219631	19MM GROMMET		1
15	219578	M8 FORM A STAINLESS STEEL WASHER		4
16	219639	M8 STAINLESS STEEL NYLON INSERT NUT		3
17	208771	TPR OPEN GROMMET	TT4045/55 ONLY (MAINS)	1
18	304358	DECK LOCK BAR WELD ASSEMBLY		1
19	208578	DECK LOCK SPRING		1
20	900986	NYLON GROMMET NUT (PLASTIC INSERT TO SUIT No 8 PLASTITE SCREW)		5
21	208638	160mm WHEEL WITH POLYURETHENE TYRE		2
22	321902	SILENCER CLAMP	TT4045/55 ONLY (MAINS)	1
23	219719	M6 X 16MM LONG HEXAGONAL STAINLESS STEEL HEAD BOLT		5
24	219718	WASHER.M6.SPRING.STAINLESS STEEL		5
25	219647	M6 FORM G STAINLESS STEEL WASHER		5
26	219897	M10 STAINLESS STEEL NYLON INSERT NUT		2
27	391440	1/2 INCH X 18G X 41MM LONG STAINLESS STEEL SPACER TUBE		2
28	219894	M10 X 60MM LONG HEXAGONAL STAINLESS STEEL BOLT		2
29	219568	NO8.3/4 INCH LG.POZI-PAN.SCREW.STAINLESS STEEL.PLASTITE		5
30	291057	M8 X 10 X 55MM LONG HEX SOCKET SHOULDER BOLT		2
31	391216	SILICON TUBE 8MM I/D X 3.2MM WALL SECTION (CUT 600MM)		1
32	901555	NYLON TUBE 12MM OD X 10MM ID (110MM)		1
33	208619	FLOOR TOOL SPRING		1
34	391215	SILICON TUBE 200MM LONG X 8MM I/D X 3.2MM WALL SECTION		1
35	219903	M10 FORM A STAINLESS STEEL WASHER		4
36	900213	TT/4045/4055 CHASSIS WELD ASSY (12SWG S/S) (2014 MODEL)		1
37	219558	M5 STAINLESS STEEL NUTSERT		1
38	291167	M6 X 70MM LONG HEX HEAD BOLT STAINLESS STEEL		1
39	901279	LATCH BLOCK TOP MOULDING		1
40	901280	LATCH BLOCK BOTTOM MOULDING		1
41	901558	M5 X 60MM STAINLESS STEEL POZI PAN MACHINE SCREW		3
42	219633	M5 STAINLESS STEEL NYLON INSERT NUT		3
43	901006	FILTER MOUNTING BRACKET		1
44	219644	M5 FORM G STAINLESS STEEL WASHER		2
45	291132	M5 X 16MM LONG STAINLESS STEEL POZI PAN SEMS SCREW		1
46	304466	FLOOR TOOL BRACKET ASSEMBLY (TT/TTB4045/4055)		1
47	206953	DETENT PINS		2

Numatic International Spare Parts

Model No: TT4045G & TT4055G CHASSIS ASSEMBLY EXPLODED VIEW

Internal Code: 904402

MS5 DRAWING: DRW-23621 ISS:A05



Numatic International Spare Parts

Model No: TT4045G & TT4055G CHASSIS ASSEMBLY EXPLODED VIEW

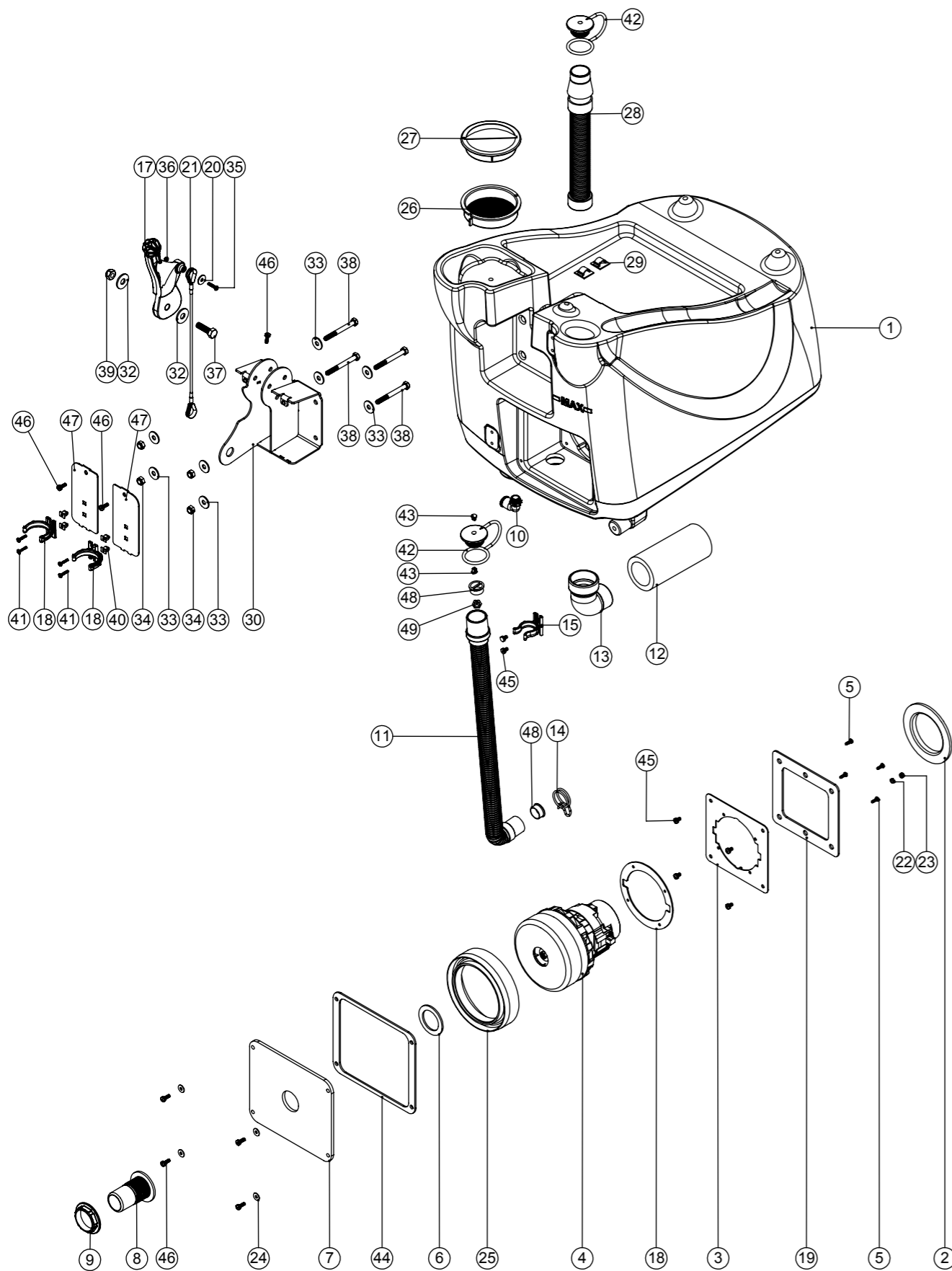
ITEM:	PART No:	DESCRIPTION	COMMENTS:	QTY
	904902	PLASTIC CHASSIS (BLACK)		
1	901543	12MM SWIVEL ELBOW PUSH FIT TO 10MM HOSE TAIL BALL VALVE ASSEMBLY		1
2	208888	EXTENDED STRAINER		1
3	901006	FILTER MOUNTING BRACKET	DETAIL A	1
4	208827	STRAINER BLACK TOP	PART OF ITEM 3 (208888)	1
5	208890	68MM EXTENDED STRAINER CLEAR BOWL	PART OF ITEM 3 (208888)	1
6	208889	EXTENDED STRAINER 50 MESH SCREEN	PART OF ITEM 3 (208888)	1
7	208830	STRAINER GASKET	PART OF ITEM 3 (208888)	1
8	208638	160mm WHEEL WITH POLYURETHENE TYRE		2
9	903577	AXLE BAR ST/ST 10MM DIA. 68MM LONG		2
10	219903	M10 FORM A STAINLESS STEEL WASHER		4
11	206713	80MM DIAMETER WHITE WHEEL		2
12	903576	AXLE BAR ST/ST 12.7MM DIA. 60MM LONG		2
13	903597	AXLE CLIP		4
14	903596	AXLE PLATE		6
15	903594	TAP PLATE		2
16	219569	NO8. 1/2 INCH. LG.POZI-PAN.SCREW.STAINLESS STEEL.PLASTITE		17
17	219568	NO8.3/4 INCH LG.POZI-PAN.SCREW.STAINLESS STEEL.PLASTITE		2
18	903573	NYLON TUBE 12MM OD X 10MM ID (96MM +/-1.0)		1
19	903580	SILICON TUBE 640MM LONG X 8MM I/D X 14.4MM OD		1
20	903581	SILICON TUBE 155MM LONG X 8MM I/D X 14.4MM OD		1
21	219465	P-CLIP		3
22	219644	M5 FORM G STAINLESS STEEL WASHER		2
23	219647	M6 FORM G STAINLESS STEEL WASHER		5
24	219925	M6 x 25MM LONG STAINLESS STEEL HEX SCREW		5
25	902353	M6 EXTERNAL SHAKEPROOF WASHER STAINLESS STEEL		5
26	208312	IGUS BEARING (GFM 101205)		6
27	902520	M8 INTERNAL WASHER SHAKEPROOF STAINLESS STEEL		1
28	903566	M8X16MM LONG STAINLESS STEEL SOCKET BUTTON HEAD BOLT		1
29	903565	M8 STAINLESS STEEL HEADED NUTSERT		1
30	901280	LATCH BLOCK BOTTOM MOULDING		1
31	901279	LATCH BLOCK TOP MOULDING		1
32	901558	M5 X 60MM STAINLESS STEEL POZI PAN MACHINE SCREW		3
33	219633	M5 STAINLESS STEEL NYLON INSERT NUT		3
34	904440	DECK LATCH BAR		1
35	208578	DECK LOCK SPRING		1
36	219578	M8 FORM A STAINLESS STEEL WASHER		2
37	304359	TT/TTB/4045/4055 SQUEEGEE MOUNT WELD ASSEMBLY		1
38	903575	AXLE BAR ST/ST 10MM DIA. 75MM LONG		1
39	208619	FLOOR TOOL SPRING		1
40	206964	SLIDE NYLON SPACER		4
41	206954	SPIRO SPACER		2
42	291125	M6 X 40 LONG HEX BOLT STAINLESS STEEL		1
43	219642	M6 STAINLESS STEEL NYLON INSERT NUT		1
44	304356	FLOOR TOOL PIVOT TUBE		1
45	206953	DETENT PINS		2
46	304466	FLOOR TOOL BRACKET ASSEMBLY (TT/TTB4045/4055)		1
47	903589	TT/B PLASTIC CHASSIS		1

Numatic International Spare Parts

Model No: TT4045 (TT1117) & TTB4055 (TT1120) BOTTOM TANK / VAC MOTOR ASSEMBLY

Internal Code: 244497
 MS3 DRAWING: DRW-16829 ISS:A17
 02/03/2017

NB: FOR WIRING SEE DRAWING: DRW-18548, DRW-17307, DRW-17309, DRW-18468



Numatic International Spare Parts

Model No: TT4045 (TT1117) & TTB4055 (TT1120) BOTTOM TANK / VAC MOTOR ASSEMBLY

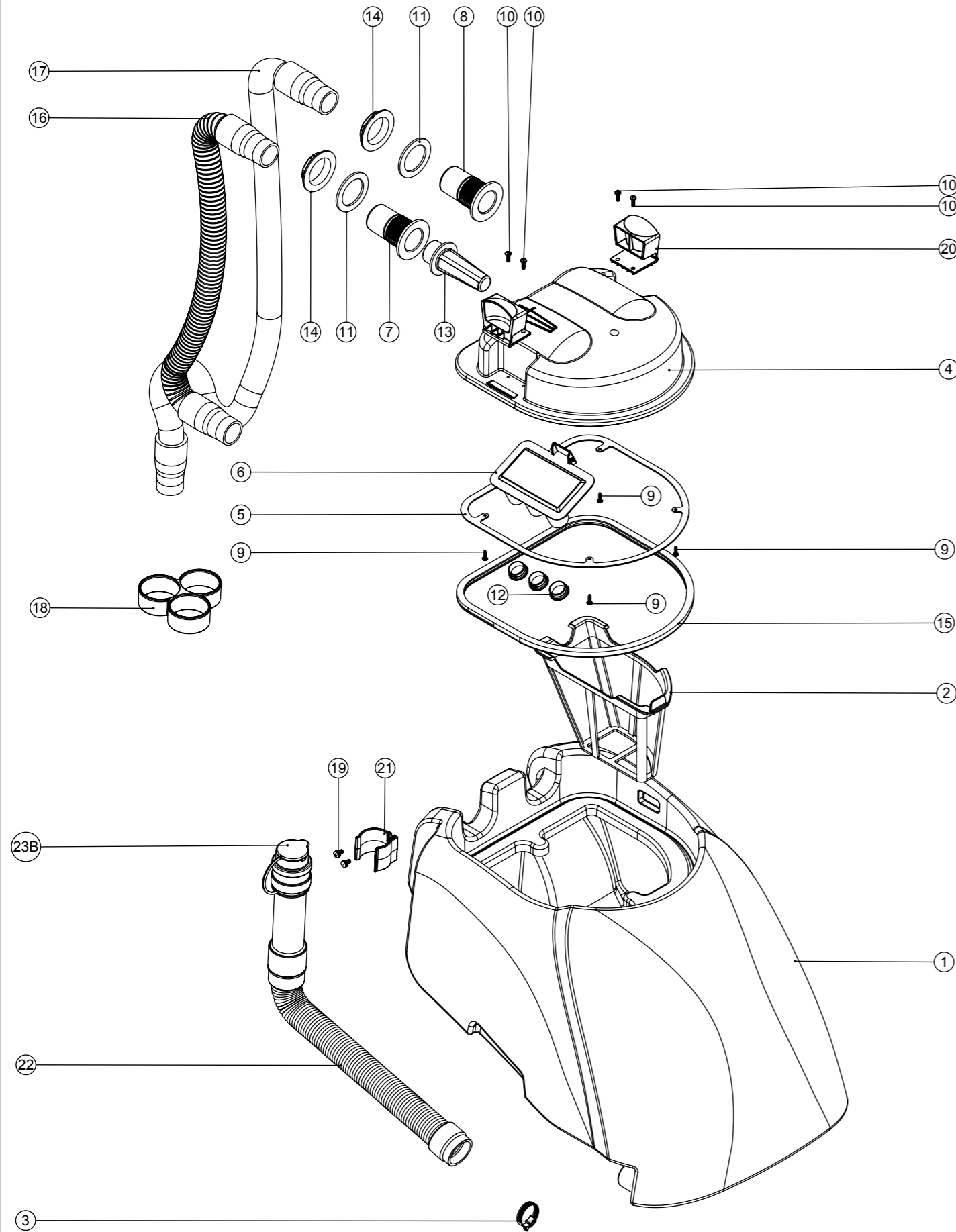
Provisional

ITEM:	PART No:	Description	Comments:	QTY.
1	237657	TT.4055 BOTTOM TANK MOULDING (GRAPHITE)		1
	237689	TT.4055 BOTTOM TANK MOULDING (GRAPHITE) EP		1
2	202008	MOTOR CAP GASKET		1
3	304417	MAINS MOTOR MOUNT WELD ASSEMBLY		1
4	205443	230V 2 STAGE D.I BYPASS ACUSTEK MOTOR (BL21104T) (MARKED 230V) TCO		1
	321935	120V VAC MOTOR ASSEMBLY C/W 170MM LONG MOTOR LEAD	110V/50Hz & 120V/60Hz NACE 8A OVERLOAD, OLDER BLUE MACHINES	1
	905736	120V 800W VAC MOTOR ASSEMBLY C/W 170MM LONG MOTOR LEAD	120V 60Hz 800W VAC. NACE. 15A OVERLOAD, GREY MACHINES	1
5	219569	NO8.1/2 INCH. LG.POZI-PAN.SCREW.STAINLESS STEEL.PLASTITE		4
6	219310	RUBBER WASHER		1
7	392441	TT4045/55 VAC MOTOR BACK PLATE		1
8	237526	38MM RED DRAIN HOSE CONNECTOR		1
9	206116	BLACK NUT		1
10	901539	ELBOW ANGLE CONNECTOR 3/8 PARALLEL THREAD C/W O-RING TO 12MM PUSH IN		1
11	213025	DUMP HOSE		1
12	208956	SILENCER FOAM TUBE 150MM		1
13	208583	DIP MOULDED ELBOW (MAINS VERSION)		1
14	902133	SPRING WIRE CLAMP (YDNAC-Y8010356)		1
15	901916	28mm HOSE CLIP		1
18	237754	35-38MM HOSE CLIP		2
17	237691	SQUEEGEE LIFT HANDLE		1
	902324	RED SQUEEGEE LIFT HANDLE		1
18	208801	TT MOTOR GASKET		1
19	208799	TT MOTOR PLATE GASKET		1
20	291118	M5 STAINLESS STEEL WASHER 19MM OD		1
21	208962	TT LIFTING WIRE		1
22	219721	M5 STAINLESS STEEL FULL NUT		1
23	219633	M5 STAINLESS STEEL NYLON INSERT NUT		1
24	219644	M5 FORM G STAINLESS STEEL WASHER		4
25	202069	BOTTOM MOTOR GASKET		1
26	207128	CLEAN TANK INLET FILTER		1
	903543	CLEAN TANK INLET FILTER (RED)		1
27	237268	FILLER CAP LID		1
	903544	FILLER CAP LID (RED)		1
28	208960	TTB/TT FILLING HOSE		1
29	220403	CABLE CLIP		2
30	404216	HANDLE MOUNT WELD ASSEMBLY - Z/PL		1
31	219558	M5 STAINLESS STEEL NUTSERT		3
32	291124	M10 PENNY WASHER STAINLESS STEEL		2
33	219716	M8 FORM G STAINLESS STEEL WASHER		8
34	219639	M8 STAINLESS STEEL NYLON INSERT NUT		4
35	219686	M4 X 20MM LONG STAINLESS STEEL POZI PAN MACHINE SCREW		1
36	219687	M4 STAINLESS STEEL NYLON INSERT NUT		1
37	219895	M10 X 35MM LONG HEXAGONAL STAINLESS STEEL SCREW		1
38	291123	M8 X 75 LONG HEX HEAD BOLT STAINLESS STEEL		4
39	219897	M10 STAINLESS STEEL NYLON INSERT NUT		1
40	900986	NYLON GROMMET NUT (PLASTIC INSERT TO SUIT No 8 PLASTITE SCREW)		4
41	219568	NO8.3/4 INCH LG.POZI-PAN.SCREW.STAINLESS STEEL.PLASTITE		4
42	903341	32MM HOSE CAP RED (C/W 8MM HOLE)		2
43	904403	BARBED RIVET BLACK		2
44	902275	VAC PLATE GASKET		1
45	291135	M5 X 10MM LONG STAINLESS STEEL POZI PAN SEMS SCREW		6
46	291132	M5 X 16MM LONG STAINLESS STEEL POZI PAN SEMS SCREW		7
47	903539	HANDLE MOUNT COVER PAINTED SILVER		2
48	904108	FLOAT STOP MOULDING		2
49	904109	FLOAT MOULDING		1

Numatic International Spare Parts

Model No: TT4045 (TT1117) & TT4055 (TT1120) TOP TANK ASSEMBLY

Internal Code: 244498
 DRAWING: DRW-16795 ISS:A08
 MS5 14/07/2015



Numatic International Spare Parts

Model No: TT4045 (TT1117) & TT4055 (TT1120) TOP TANK ASSEMBLY

ITEM:	PART No:	Description	Comments:	QTY.
1	237656	TT.4055 TOP TANK MOULDING (BLUE)		1
	237731	TT.4055 TOP TANK MOULDING (RED)		1
	237733	TT.4055 TOP TANK MOULDING (LIGHT YELLOW)		1
	237735	TT.4055 TOP TANK MOULDING (GREEN)		1
	901780	TT.4055.TOP TANK MOULDING (GRAPHITE)		1
2	207000	GRIT FILTER BASKET		1
3	206209	A.B.A HOSE CLIP		1
4	237381	INTEGRATED CHASSIS SEPARATOR		1
5	392200	FILTER GASKET RING		1
6	237090	SEPARATOR FLOAT MOULDING (MK 2)		1
7	237526	38MM RED DRAIN HOSE CONNECTOR		1
8	237018	38MM DRAIN HOSE CONNECTOR		1
9	219852	NO6 X 1/2 LONG POZI PAN STAINLESS STEEL SELF TAP SCREW		4
10	219569	NO8.1/2 INCH. LG.POZI-PAN.SCREW.STAINLESS STEEL.PLASTITE		4
11	219310	RUBBER WASHER		2
12	206315	TUBE END PLUG		3
13	206265	TT/B 345 BARREL FILTER		1
14	206116	BLACK NUT		2
15	208591	NEW SEPARATOR GASKET		1
16	213058	VAC HOSE 650MM X Ø38MM		1
17	280019	35MM X 690MM LONG 3:1 STRETCH HOSE (SHORT & LONG CUFF)		1
18	237718	HOSE GUIDE		1
19	291135	M5 X 10MM LONG STAINLESS STEEL POZI PAN SEMS SCREW		2
20	902919	CLIP MOULDING (RED)		2
	229494	CLIP MOULDING (GREY)		2
21	237382	ACETAL HOSE CLIP MOULDING		1
22	901548	35MM X 250MM STRETCH HOSE (3:1) C/W ADJUSTABLE CUFF + CAP		1
23B	900903	HOSE CLOSURE REPLACEMENT KIT (35MM-38MM STRETCH HOSE)	SPARE PART	1

WIRING DIAGRAM

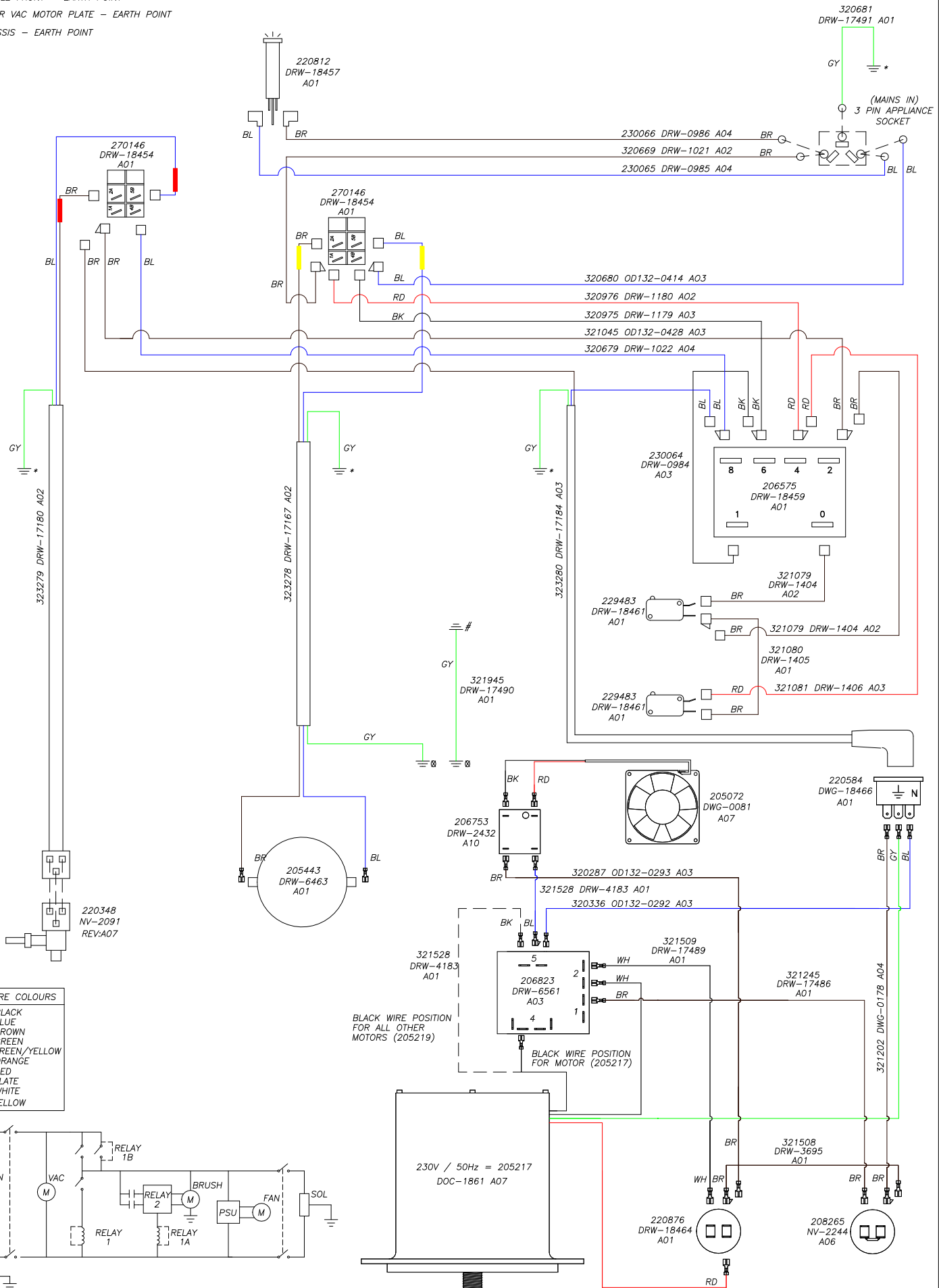
COMP. No
123446

DRG. No
DRW-18548

WIRING DIAGRAM.TWINTEC.1S.3W.230.50.NT.PLG

ISSUE	REVISION	DRAWN	APPD.	DATE
A05	323280 & 323278 REVISIONS UPDATED REF ECO-18559	MS	MC	4/08/15

- * = HANDLE FRONT - EARTH POINT
- # = INNER VAC MOTOR PLATE - EARTH POINT
- ⊞ = CHASSIS - EARTH POINT



KEY: WIRE COLOURS

BK	- BLACK
BL	- BLUE
BR	- BROWN
GR	- GREEN
GY	- GREEN/YELLOW
OR	- ORANGE
RD	- RED
SL	- SLATE
WH	- WHITE
YL	- YELLOW

BLACK WIRE POSITION FOR ALL OTHER MOTORS (205219)

BLACK WIRE POSITION FOR MOTOR (205217)

