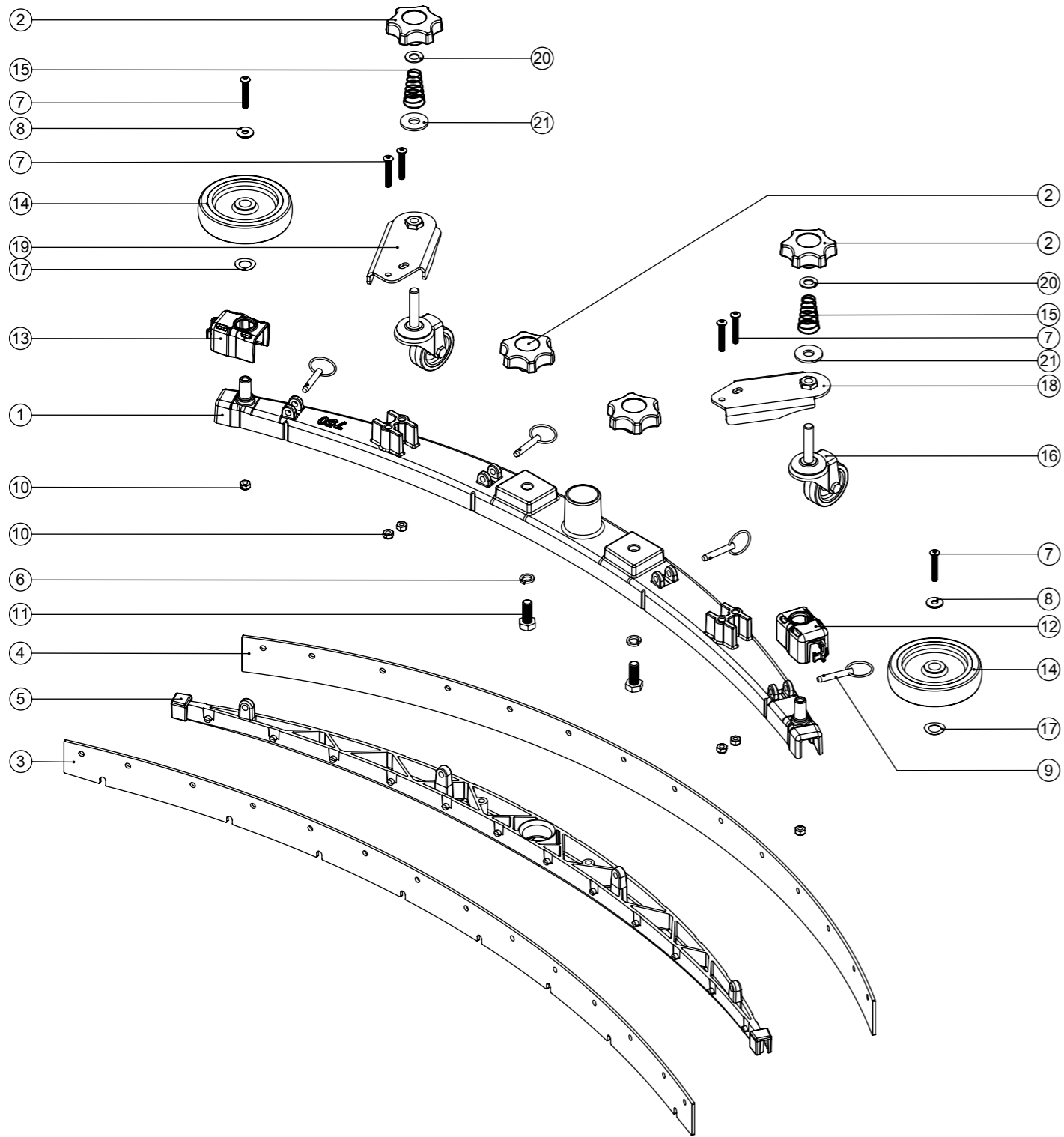


Numatic International Spare Parts

Model No: 750 TWINTEC ALUMINIUM FLOOR TOOL
(38MM HOSE, RED TRIM, SERILOR BLADES)

Internal Code: 903853
DRAWING: DRW-23157 ISS:A02
MS5 05/08/16

NB: FOR WIRING SEE DRAWING: WD-0???



Numatic International Spare Parts

Model No: 750 TWINTEC ALUMINIUM FLOOR TOOL (38MM HOSE, RED TRIM, SERILOR BLADES)

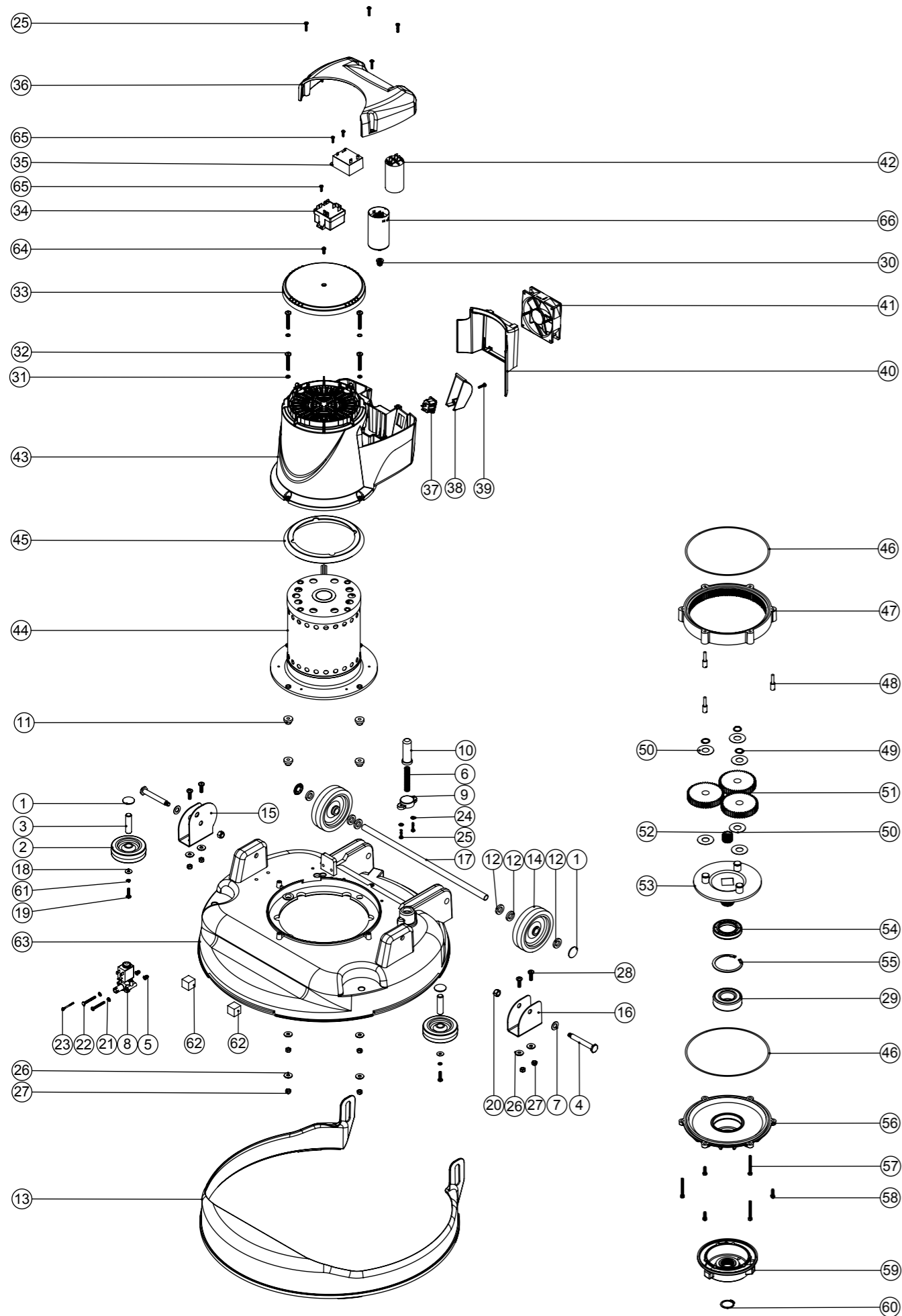
ITEM:	PART No:	DESCRIPTION	QTY.
1	208637	(750MM SCRUB WIDTH) ALUMINIUM SQUEEGEE CASTING (38MM HOSE FITTING)	1
2	903281	M10 LOBE KNOB (RED)	4
3	208968	750MM SCRUB WIDTH REPLACEMENT FRONT BLADE (968MM LONG)	1
4	208971	750MM SCRUB WIDTH REPLACEMENT REAR BLADE (1000MM LONG)	1
5	903848	(750MM SCRUB WIDTH) RED BLADE HOLDER MOULDING (SLOPING PROFILE) (32MM & 38MM HOSE FITTING)	1
6	219899	M10 SINGLE COIL STAINLESS STEEL WASHER	2
7	219933	M6 X 35MM SOCKET BUTTON HEAD BOLT STAINLESS STEEL	6
8	219647	M6 FORM G STAINLESS STEEL WASHER	2
9	206953	DETENT PINS	4
10	219642	M6 STAINLESS STEEL NYLON INSERT NUT	6
11	219909	M10 X 25MM LONG HEXAGONAL STAINLESS STEEL SCREW	2
12	237322	RIGHT HAND FLOOR TOOL CLIP MOULDING	1
13	237323	LEFT HAND FLOOR TOOL CLIP MOULDING	1
14	208796	4 INCH WHEEL	2
15	229175	CONICAL SPRING	2
16	208497	50MM DIAMETER GREY TPR TYRED SWIVEL CASTORS C/W M10 X 45 SWAGED STEM.	2
17	219891	13MM WAVEY WASHER	2
18	304523	ADJUSTABLE FLOOR TOOL CASTOR PLATE RHS WELD ASSY	1
19	304522	ADJUSTABLE FLOOR TOOL CASTOR PLATE LHS WELD ASSY	1
20	219903	M10 FORM A STAINLESS STEEL WASHER	2
21	291124	M10 PENNY WASHER STAINLESS STEEL	2

Numatic International Spare Parts

Model No: 550MM MAINS DECK ASSEMBLY

Internal Code: 234957
 DRAWING: DRW-13424 ISS:A07
 TB 11/08/2016

NB: FOR WIRING SEE DRAWING: DRW-18548, DRW-17307, DRW-17309, DRW-18468, DRW-11855, DRW-12474, DRW-12545



Numatic International Spare Parts

Model No: 550MM MAINS DECK ASSEMBLY

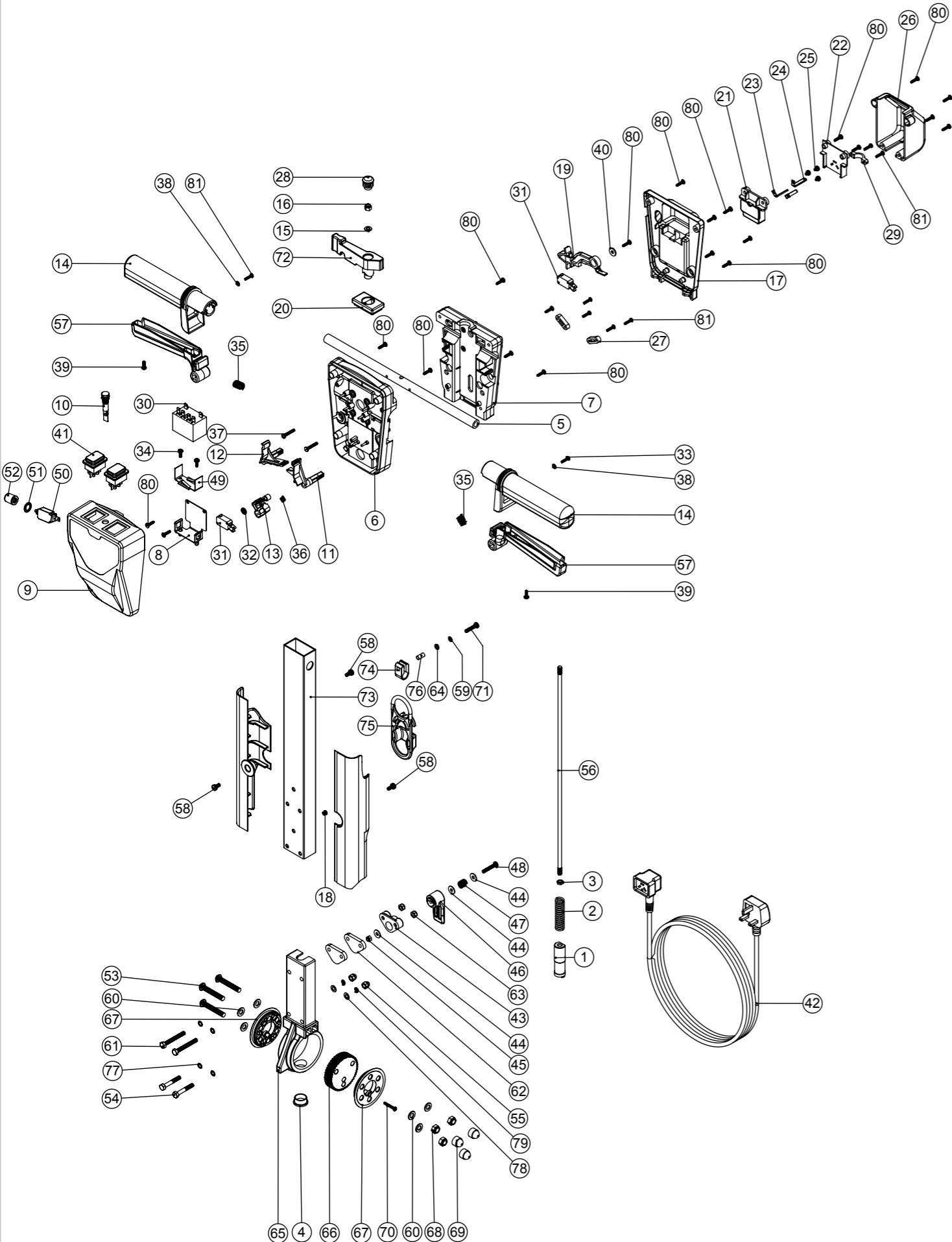
ITEM:	PART No:	Description	Comments	QTY.
1	204021	12.7MM STAINLESS STEEL HUB CAP		4
2	204068	3 INCH GREY WHEEL		2
3	206013	BUFFER WHEEL PIN		2
4	208626	TT/TTB4055 PIVOT PIN		2
5	219009	M4 BRASS TAPPEX INSERT		2
6	219692	COMPRESSION SPRING		1
7	219903	M10 FORM A STAINLESS STEEL WASHER		2
8	220348	SOLENOID VALVE 240V 50/60HZ		1
	220350	SOLENOID VALVE 110V 50/60HZ		1
9	223242	PLUNGER MOUNTING PLATE MOULDING		1
10	229128	PLUNGER		1
11	229285	MOTOR MOUNTING SPACER		4
12	229346	SPACER		6
13	229562	SPLASH SKIRT MOULDING		1
14	329187	100MM WHEEL (MODIFIED)		2
15	392248	DECK MOUNT BRACKET		1
16	392279	DECK MOUNT RH (550 DECK VERSION)		1
17	391439	1/2 INCH DIAMETER X 18G STAINLESS STEEL TUBE (0.375)		1
18	219644	M5 FORM G STAINLESS STEEL WASHER		2
19	219571	M5 X 20MM LONG POZI PAN STAINLESS STEEL SCREW		2
20	219639	M8 STAINLESS STEEL NYLON INSERT NUT		2
21	219688	M4 FORM A STAINLESS STEEL WASHER		2
22	219703	M4 X 35MM LONG STAINLESS STEEL POZI PAN SCREW		2
23	219251	REPLACEMENT MPM CONNECTOR M3 SCREW		1
24	219355	M5 FORM A STAINLESS STEEL WASHER		2
25	219568	NO8.3/4 INCH LG.POZI-PAN.SCREW.STAINLESS STEEL.PLASTITE		6
26	219647	M6 FORM G STAINLESS STEEL WASHER		8
27	219642	M6 STAINLESS STEEL NYLON INSERT NUT		8
28	219701	M6 X 20MM LONG POZI PAN STAINLESS STEEL SCREW		4
29	230094	62MM O/D X 30MM I/D X 20MM BEARING (WITH SEALS)		1
30	219453	M8 MULTISERT		1
31	219544	M6 SHAKEPROOF WASHER		4
32	219982	M6 X 40MM LONG POZI PAN STAINLESS STEEL SCREW		4
33	229971	CAP MOULDING		1
34	206823	230V SINGLE SPEED VOLTAGE RELAY		1
	206822	110V/120V VOLTAGE RELAY		1
	208416	120V RELAY	NACE MACHINES ONLY	1
35	206753	UNIVERSAL POWER SUPPLY		1
36	237071	NPR / TT GRAPHITE LID MOULDING		1
37	220584	RENDAR CLIP IN PLUG		1
38	229213	PLUG COVER		1
39	219914	NO6 X 5/8 INCH LONG POZI-PAN PLASTITE STAINLESS STEEL SCREW		1
40	229972	FAN GUARD MOULDING		1
41	205072	PROCESSED 12V DC BRUSHLESS FAN		1
42	220876	20 MFD MOTOR RUN CAPACITOR (450V)	220V & 230V MACHINES	1
	208211	80uF MOTOR RUN CAPACITOR	120V MACHINES	1
	208219	70uF RUN CAPACITOR	110V MACHINES	1
	208210	MOTOR START CAPACITOR 480 MFD C/W RESISTOR & M8 STUD	110V & 120V MACHINES	1
43	328132	GRAPHITE MOTOR COWL MOULDING PRINTED	PRINTED NUMATIC	1
	330008	TWINTec MAINS MOTOR COWL MOULDING (GRAPHITE) (NO LOGO)	NO PRINT	1
44	205217	COMBINED INDUCTION MOTOR 4POLE 220-240V 50Hz		1
	205219	COMBINED INDUCTION MOTOR 4POLE 220V 60Hz		1
	205220	COMBINED INDUCTION MOTOR 4POLE 120V 60Hz		1
	205221	COMBINED INDUCTION MOTOR 4POLE 110V 50Hz		1
45	227556	TOP MOTOR GASKET		1
46	230001	V OIL SEAL		2
47	214115	GEAR BOX MID SECTION		1
48	208207	GEARBOX FASTENER WITH SLOT		3
49	230015	15MM EXTERNAL CIRCLIP		3
50	230215	35MM X 15 I/D ALUMINIUM WASHER		6
51	230013	48 TOOTH SPUR GEAR(STANDARD SPEED 50/60HZ)		3
52	230027	12 TOOTH PINION GEAR (STANDARD SPEED)		1
53	230291	PLANET CARRIER & PIN ASSEMBLY (50HZ STANDARD SPEED)		1
54	230158	VITON OIL SEAL (BROWN)		1
55	230200	62MM INTERNAL CIRCLIP		1
56	230208	DIE CAST BOTTOM PLATE ASSY	INCLUDE 58, 59, 31	1
57	219706	M5 X 45MM LONG STAINLESS STEEL HEXAGONAL BOLT		3
58	219904	M5 X16MM LONG HEXAGONAL STAINLESS STEEL BOLT		3
59	230207	DIE CAST CHUCK MACHINED		1
60	230048	26MM EXTERNAL CIRCLIP		1
61	291084	WASHER.M5.SHAKEPROOF.STAINLESS STEEL		2
62	902352	FOAM SPACER 20MM		2
63	304404	TTB4055 DECK MOULDING DRILLED (NEW DESIGN)		1
64	219890	M4 X 12MM LONG POZI PAN STAINLESS STEEL SCREW		1
65	291061	No6 X 1/2 INCH LONG POZI PAN PLASTITE SCREW (STAINLESS STEEL)		3
66	208265	MOTOR START CAPACITOR 98 MFD		1
67	291145	M4 SHAKEPROOF WASHER STAINLESS STEEL		1

Numatic International Spare Parts

Model No: TT4045 (TT1117) & TT4055 (TT1120) HANDLE ASSEMBLY

NB: FOR WIRING SEE DRAWING: DRW-18548, DRW-17307, DRW-17309, DRW-18468

Internal Code: 244495
 DRAWING: DRW-16831 ISS:A17
 PRO 10/03/2017



Numatic International Spare Parts

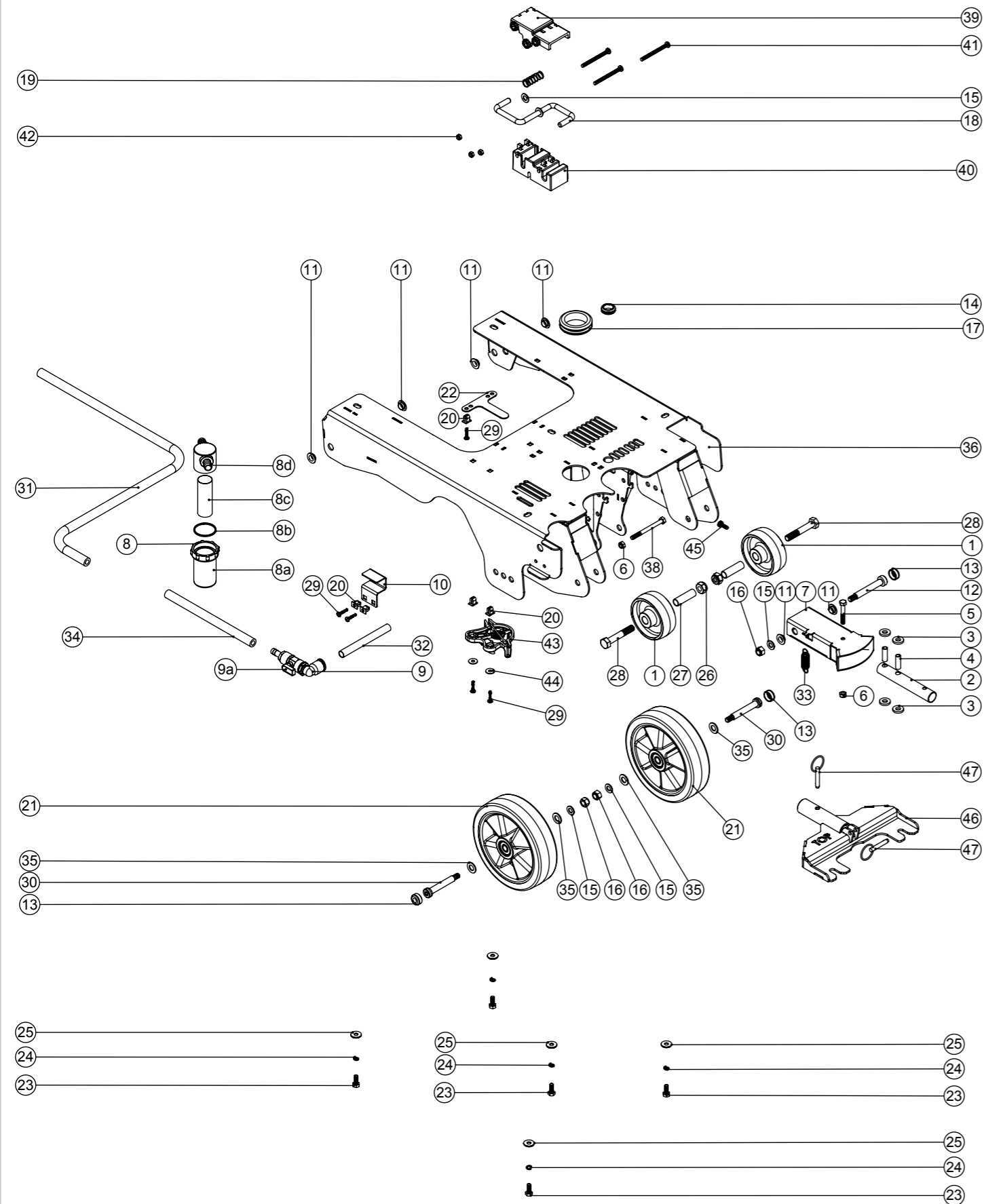
Model No: TT4045 (TT1117) & TT4055 (TT1120) HANDLE ASSEMBLY

ITEM:	PART No:	Description	Comments:	QTY.
1	229073	GEAR LOCKING PIN		1
2	229138	SPRING		1
3	219099	M6 HALF NUT		1
4	229099	25MM DIA HOLE PLUG		1
5	338269	CROSS TUBE		1
6	227576	FRONT INNER HALF MOULDING		1
7	229508	FLAME RETARDANT FRONT INNER HALF MOULDING	FLAME RETARDANT CSA SPEC	1
8	227577	REAR INNER HALF MOULDING		1
9	329484	MODIFIED REAR INNER HALF MOULDING (CSA SPEC)	FLAME RETARDANT CSA SPEC	1
10	303526	NUTSERTED RELAY MOUNTING BRACKET		1
11	229748	FRONT COVER MOULDING (MAINS & BATTERY)		1
12	229750	MAINS FRONT COVER MOULDING (C/B HOLE)	110V/50HZ MACHINES	1
13	229751	MAINS FRONT COVER MOULDING (C/B HOLE)(FLAME RETARDANT)	120V/60HZ FLAME RETARDENT MACHINES	1
14	220812	230V NEON INDICATOR & RED LENS		1
15	220813	120V NEON INDICATOR & RED LENS		1
16	227585	LEFT HAND SWITCH OPERATING LEVER MOULDING		1
17	227586	RIGHT HAND SWITCH OPERATING LEVER MOULDING		1
18	227587	CENTRE SWITCH OPERATING LEVER MOULDING		1
19	227580	HAND GRIP MOULDING		2
20	219493	M6 NYLON WASHER		1
21	219088	M6 NYLON INSERT NUT		1
22	227676	REAR COVER		1
23	229507	MAINS TYPE FLAME RETARDANT REAR COVER MOULDING	FLAME RETARDANT CSA SPEC	1
24	229009	BLANKING PLUG		1
25	227584	INTERLOCK LEVER MOULDING		1
26	227582	HANDLE PLUG MOULDING		1
27	903546	HANDLE PLUG MOULDING (RED)		1
28	227691	TERMINAL BLOCK		1
29	229510	FLAME RETARDANT TERMINAL BLOCK	FLAME RETARDANT CSA SPEC	1
30	227680	TERMINAL BLOCK COVER		1
31	229511	FLAME RETARDANT TERMINAL BLOCK COVER	FLAME RETARDANT CSA SPEC	1
32	206562	CONTACT PIN		2
33	206563	EARTH CONTACT PIN		1
34	219090	M4 X 8MM LONG POZI PAN SEMS SCREW		3
35	227678	SOCKET COVER		1
36	229512	FLAME RETARDANT INLET COVER	FLAME RETARDANT CSA SPEC	1
37	227008	BLACK CABLE CLAMP		2
38	20638V	19MM BLACK TUBE END STOP		1
39	216290	CABLE CLAMP		1
40	206575	240V / 25A RELAY		1
41	206576	100V-120V / 25A RELAY		1
42	229483	SNAP ACTION SWITCH		2
43	219805	4MM SPIREFIX		1
44	219107	NO6.5/8 INCH LG.POZI-PAN.SCREW.Z/PL.PLASTITE		1
45	219471	M4 X 12MM LONG POZI PAN SEMS SCREW		2
46	219803	TRIGGER COMPRESSION SPRING		2
47	219804	SWITCH COMPRESSION SPRING		1
48	219811	NO8 X 1 INCH LONG POZI-PAN SELF TAP SCREW		2
49	219206	M4 FORM A WASHER		2
50	219270	No8 X 1/2 INCH LONG POZI PAN SELF TAP SCREW		2
51	219005	M5 FORM G WASHER		1
52	270146	GREEN ILLUMINATED SWITCH + MEMBRANE		2
53	904042	SWITCH DPST RED ILLUMINATED WITH MEMBRANE 120/240V		2
54	236012	20.0M X 1.50MM X 3 CORE NUCABLE (UK PLUG)		1
55	236132	20M X 1.5MM X 3 CORE YELLOW CABLE X SOCKET (EURO PLUG)		1
56	236020	20.0M X 1.5MM X 3 CORE NUCABLE (SWISS PLUG)		1
57	236024	20.0M X 1.50MM X 3 CORE NUCABLE (SOUTH AFRICAN PLUG)		1
58	236068	20.0MT X 1.5MM X 3 CORE CABLE (16A SOCKET + 10A PLUG) AUSTRALIAN		1
59	236118	20.0M X 1.5MM X 3 CORE NUCABLE (16 AMP INDUSTRIAL PLUG)		1
60	236028	20.0M X 14AWG X 3 CORE YELLOW NUCABLE (CSA PLUG)		1
61	227806	CABLE RELEASE BASE MOULDING		1
62	903882	RED CABLE RELEASE BASE MOULDING		1
63	219644	M5 FORM G STAINLESS STEEL WASHER		3
64	219076	M5 NYLON INSERT NUT		1
65	227807	CABLE RELEASE TOP MOULDING		1
66	903883	RED CABLE RELEASE TOP MOULDING		1
67	206599	SPRING (REF:C5514370)		1
68	219720	M5 X 30MM LONG STAINLESS STEEL POZI PAN SCREW		1
69	206500	RELAY BRACKET		1
70	220440	8 AMP OVERLOAD	120V/60HZ OLDER BLUE MODELS	1
71	208550	15 AMP OVERLOAD	110V/50HZ & 120/60HZ MACHINES	1
72	219702	M10 INTERNAL LOCK WASHER	110V & 120V MACHINES	1
73	220459	OVERLOAD DUST COVER	110V & 120V MACHINES	1
74	219922	M8 X 50MM LONG SOCKET BUTTON HEAD STAINLESS STEEL BOLT		3
75	291125	M6 X 40 LONG HEX BOLT STAINLESS STEEL		2
76	219764	M6 STAINLESS STEEL DOME NUT		2
77	229461	440MM HANDLE LOCKING ROD		1
78	229500	TRIGGER MOULDING BLUE		2
79	227581	TRIGGER MOULDING (GREY)		2
80	903547	TRIGGER MOULDING (RED)		1
81	291131	M5 X 12MM LONG STAINLESS STEEL POZI PAN SEMS SCREW		3
82	291084	WASHER.M5.SHAKEPROOF.STAINLESS STEEL		1
83	219578	M8 FORM A STAINLESS STEEL WASHER		6
84	291128	M6 X 50 LONG HEX BOLT STAINLESS STEEL		2
85	392437	RETAINER SPACER		2
86	219642	M6 STAINLESS STEEL NYLON INSERT NUT		2
87	219355	M5 FORM A STAINLESS STEEL WASHER		1
88	900398	HANDLE CASTING MACHINED (HNS VERSION)		1
89	900397	MINI ADJUSTMENT GEAR		1
90	900396	ADJUSTMENT GEAR SPACER		2
91	219639	M8 STAINLESS STEEL NYLON INSERT NUT		3
92	903260	BOLT AND NUT CAP		3
93	291150	NO6 X 1 INCH LONG POZI PAN SCREW S/S		1
94	219575	M5 X 25MM LONG POZI PAN STAINLESS STEEL SCREW		1
95	227583	ADJUSTMENT LEVER MOULDING		1
96	903545	ADJUSTMENT LEVER MOULDING (RED)		1
97	903603	TGB/TTG 430MM PROCESSED ALI HANDLE PAINT SILVER		1
98	219743	CABLE CLEAT		1
99	902312	CABLE STRESS RELIEF		1
100	903192	SPIROL SPACER SP100 5MM NOM ID x 14MM		1
101	219544	M6 SHAKEPROOF WASHER		4
102	219560	M6 FORM B STAINLESS STEEL WASHER		2
103	219718	WASHER.M6.SPRING.STAINLESS STEEL		2
104	219370	No8 X 5/8 INCH LONG PLASTITE STAINLESS STEEL SCREW		21
105	219914	NO6.5/8 INCH LG.POZI-PAN.SCREW.STAINLESS STEEL.PLASTITE		7
106	237692	HANDLE CABLE COVER L/H		1
107	237693	HANDLE CABLE COVER R/H		1

Numatic International Spare Parts

Model No: TT4045 (TT1117) & TT4055 (TT1120) & TTB3045
CHASSIS ASSEMBLY

Internal Code: 244496
DRAWING: DRW-16813 ISS:A10
TB 28/06/2016



Numatic International Spare Parts

Model No: TT4045 (TT1117) & TT4055 (TT1120) & TTB3045 CHASSIS ASSEMBLY

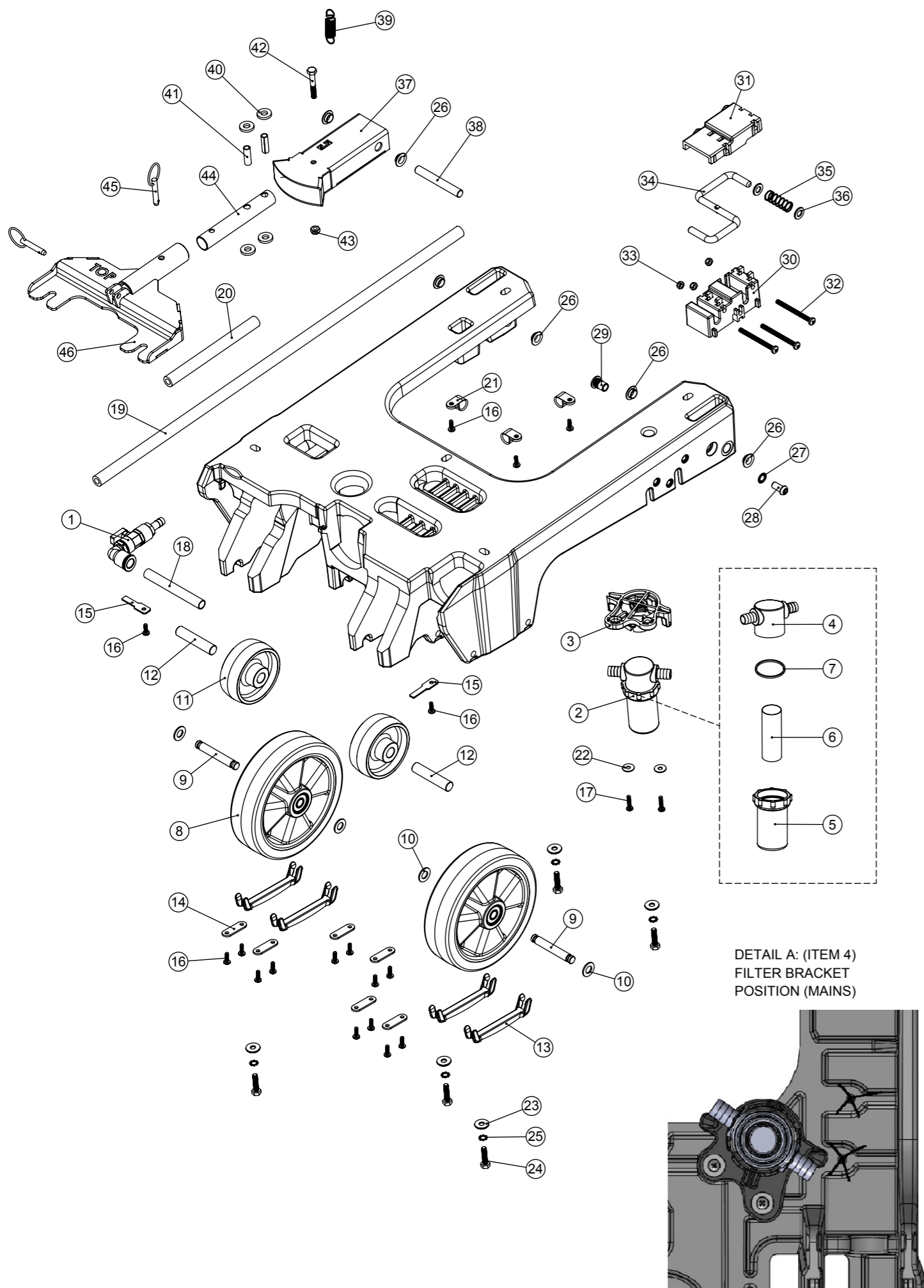
ITEM:	PART No:	Description	Comments:	QTY.
1	206713	80MM DIAMETER WHITE WHEEL		2
2	304356	FLOOR TOOL PIVOT TUBE		1
3	206964	SLIDE NYLON SPACER		4
4	206954	SPIRO SPACER		2
5	291125	M6 X 40 LONG HEX BOLT STAINLESS STEEL		1
6	219642	M6 STAINLESS STEEL NYLON INSERT NUT		2
7	304359	TT/TTB/4045/4055 SQUEEGEE MOUNT WELD ASSEMBLY		1
8	208888	EXTENDED STRAINER		1
8a	208890	EXTENDED STRAINER CLEAR BOWL	SPARE ITEM	1
8b	208830	STRAINER GASKET	SPARE ITEM	1
8c	208889	EXTENDED STRAINER 50 MESH SCREEN	SPARE ITEM	1
8d	208827	STRAINER BLACK TOP	SPARE ITEM	1
9	901543	12MM SWIVEL ELBOW PUSH FIT TO 10MM HOSE TAIL BALL VALVE ASSEMBLY		1
9a	901544	TAP HANDLE C/W COVER AND M3X6MM SCREW (SPARE ITEM)	SPARE ITEM	1
10	392314	10MM TAP BRACKET		1
11	208312	IGUS BEARING (GFM 101205)		6
12	208574	M8 X 10 X 60 SHOULDER BOLT		1
13	237632	SHOULDER BOLT COVER		3
14	219631	19MM GROMMET		1
15	219578	M8 FORM A STAINLESS STEEL WASHER		4
16	219639	M8 STAINLESS STEEL NYLON INSERT NUT		3
17	208771	TPR OPEN GROMMET	TT4045/55 ONLY (MAINS)	1
18	304358	DECK LOCK BAR WELD ASSEMBLY		1
19	208578	DECK LOCK SPRING		1
20	900986	NYLON GROMMET NUT (PLASTIC INSERT TO SUIT No 8 PLASTITE SCREW)		5
21	208638	160mm WHEEL WITH POLYURETHENE TYRE		2
22	321902	SILENCER CLAMP	TT4045/55 ONLY (MAINS)	1
23	219719	M6 X 16MM LONG HEXAGONAL STAINLESS STEEL HEAD BOLT		5
24	219718	WASHER.M6.SPRING.STAINLESS STEEL		5
25	219647	M6 FORM G STAINLESS STEEL WASHER		5
26	219897	M10 STAINLESS STEEL NYLON INSERT NUT		2
27	391440	1/2 INCH X 18G X 41MM LONG STAINLESS STEEL SPACER TUBE		2
28	219894	M10 X 60MM LONG HEXAGONAL STAINLESS STEEL BOLT		2
29	219568	NO8.3/4 INCH LG.POZI-PAN.SCREW.STAINLESS STEEL.PLASTITE		5
30	291057	M8 X 10 X 55MM LONG HEX SOCKET SHOULDER BOLT		2
31	391216	SILICON TUBE 8MM I/D X 3.2MM WALL SECTION (CUT 600MM)		1
32	901555	NYLON TUBE 12MM OD X 10MM ID (110MM)		1
33	208619	FLOOR TOOL SPRING		1
34	391215	SILICON TUBE 200MM LONG X 8MM I/D X 3.2MM WALL SECTION		1
35	219903	M10 FORM A STAINLESS STEEL WASHER		4
36	900213	TT/4045/4055 CHASSIS WELD ASSY (12SWG S/S) (2014 MODEL)		1
37	219558	M5 STAINLESS STEEL NUTSERT		1
38	291167	M6 X 70MM LONG HEX HEAD BOLT STAINLESS STEEL		1
39	901279	LATCH BLOCK TOP MOULDING		1
40	901280	LATCH BLOCK BOTTOM MOULDING		1
41	901558	M5 X 60MM STAINLESS STEEL POZI PAN MACHINE SCREW		3
42	219633	M5 STAINLESS STEEL NYLON INSERT NUT		3
43	901006	FILTER MOUNTING BRACKET		1
44	219644	M5 FORM G STAINLESS STEEL WASHER		2
45	291132	M5 X 16MM LONG STAINLESS STEEL POZI PAN SEMS SCREW		1
46	304466	FLOOR TOOL BRACKET ASSEMBLY (TT/TTB4045/4055)		1
47	206953	DETENT PINS		2

Numatic International Spare Parts

Model No: TT4045G & TT4055G CHASSIS ASSEMBLY EXPLODED VIEW

Internal Code: 904402

MS5 DRAWING: DRW-23621 ISS:A05



Numatic International Spare Parts

Model No: TT4045G & TT4055G CHASSIS ASSEMBLY EXPLODED VIEW

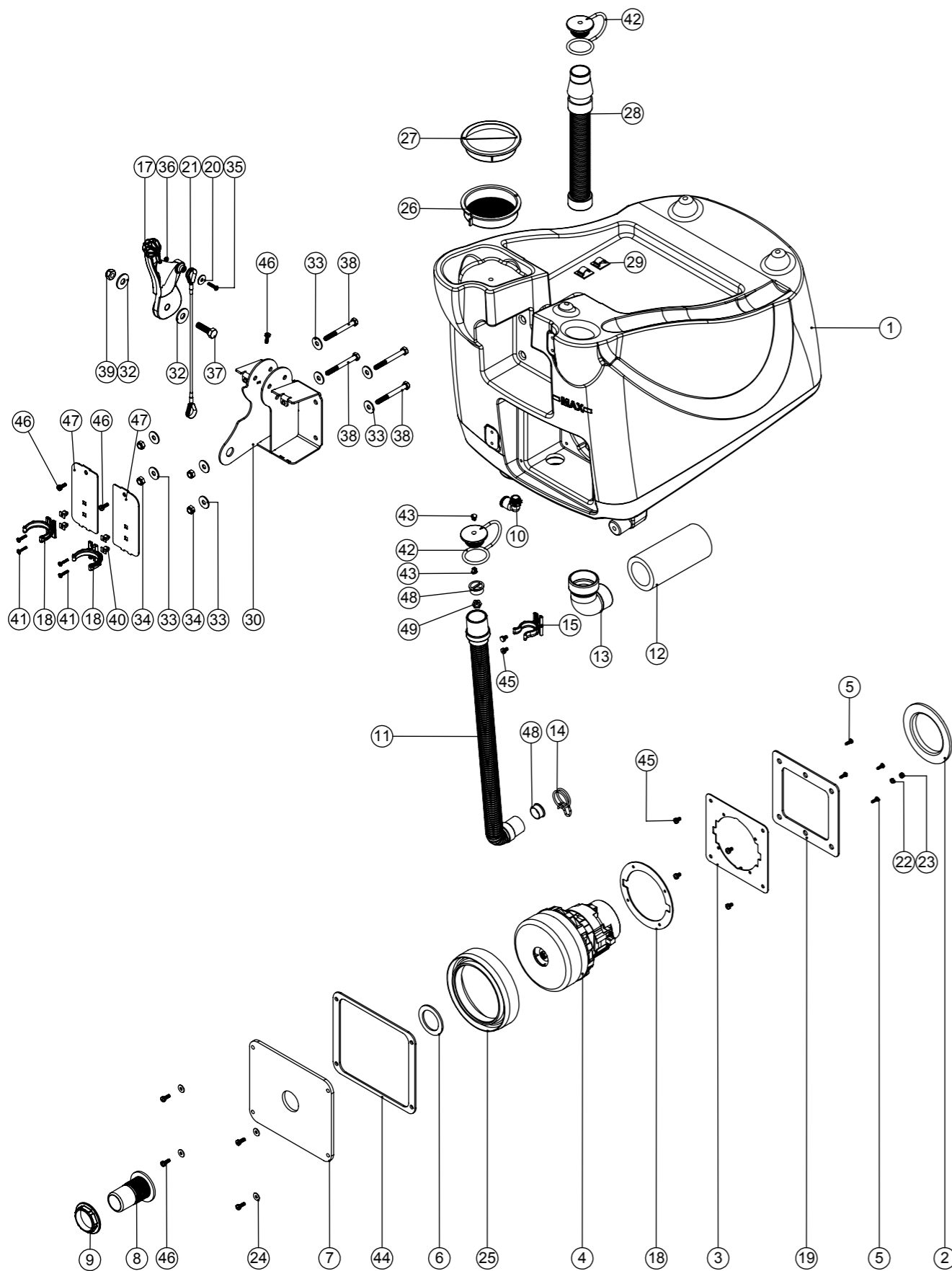
ITEM:	PART No:	DESCRIPTION	COMMENTS:	QTY
	904902	PLASTIC CHASSIS (BLACK)		
1	901543	12MM SWIVEL ELBOW PUSH FIT TO 10MM HOSE TAIL BALL VALVE ASSEMBLY		1
2	208888	EXTENDED STRAINER		1
3	901006	FILTER MOUNTING BRACKET	DETAIL A	1
4	208827	STRAINER BLACK TOP	PART OF ITEM 3 (208888)	1
5	208890	68MM EXTENDED STRAINER CLEAR BOWL	PART OF ITEM 3 (208888)	1
6	208889	EXTENDED STRAINER 50 MESH SCREEN	PART OF ITEM 3 (208888)	1
7	208830	STRAINER GASKET	PART OF ITEM 3 (208888)	1
8	208638	160mm WHEEL WITH POLYURETHENE TYRE		2
9	903577	AXLE BAR ST/ST 10MM DIA. 68MM LONG		2
10	219903	M10 FORM A STAINLESS STEEL WASHER		4
11	206713	80MM DIAMETER WHITE WHEEL		2
12	903576	AXLE BAR ST/ST 12.7MM DIA. 60MM LONG		2
13	903597	AXLE CLIP		4
14	903596	AXLE PLATE		6
15	903594	TAP PLATE		2
16	219569	NO8. 1/2 INCH. LG.POZI-PAN.SCREW.STAINLESS STEEL.PLASTITE		17
17	219568	NO8.3/4 INCH LG.POZI-PAN.SCREW.STAINLESS STEEL.PLASTITE		2
18	903573	NYLON TUBE 12MM OD X 10MM ID (96MM +/-1.0)		1
19	903580	SILICON TUBE 640MM LONG X 8MM I/D X 14.4MM OD		1
20	903581	SILICON TUBE 155MM LONG X 8MM I/D X 14.4MM OD		1
21	219465	P-CLIP		3
22	219644	M5 FORM G STAINLESS STEEL WASHER		2
23	219647	M6 FORM G STAINLESS STEEL WASHER		5
24	219925	M6 x 25MM LONG STAINLESS STEEL HEX SCREW		5
25	902353	M6 EXTERNAL SHAKEPROOF WASHER STAINLESS STEEL		5
26	208312	IGUS BEARING (GFM 101205)		6
27	902520	M8 INTERNAL WASHER SHAKEPROOF STAINLESS STEEL		1
28	903566	M8X16MM LONG STAINLESS STEEL SOCKET BUTTON HEAD BOLT		1
29	903565	M8 STAINLESS STEEL HEADED NUTSERT		1
30	901280	LATCH BLOCK BOTTOM MOULDING		1
31	901279	LATCH BLOCK TOP MOULDING		1
32	901558	M5 X 60MM STAINLESS STEEL POZI PAN MACHINE SCREW		3
33	219633	M5 STAINLESS STEEL NYLON INSERT NUT		3
34	904440	DECK LATCH BAR		1
35	208578	DECK LOCK SPRING		1
36	219578	M8 FORM A STAINLESS STEEL WASHER		2
37	304359	TT/TTB/4045/4055 SQUEEGEE MOUNT WELD ASSEMBLY		1
38	903575	AXLE BAR ST/ST 10MM DIA. 75MM LONG		1
39	208619	FLOOR TOOL SPRING		1
40	206964	SLIDE NYLON SPACER		4
41	206954	SPIRO SPACER		2
42	291125	M6 X 40 LONG HEX BOLT STAINLESS STEEL		1
43	219642	M6 STAINLESS STEEL NYLON INSERT NUT		1
44	304356	FLOOR TOOL PIVOT TUBE		1
45	206953	DETENT PINS		2
46	304466	FLOOR TOOL BRACKET ASSEMBLY (TT/TTB4045/4055)		1
47	903589	TT/B PLASTIC CHASSIS		1

Numatic International Spare Parts

Model No: TT4045 (TT1117) & TTB4055 (TT1120) BOTTOM TANK / VAC MOTOR ASSEMBLY

Internal Code: 244497
 MS3 DRAWING: DRW-16829 ISS:A17
 02/03/2017

NB: FOR WIRING SEE DRAWING: DRW-18548, DRW-17307, DRW-17309, DRW-18468



Numatic International Spare Parts

Model No: TT4045 (TT1117) & TTB4055 (TT1120) BOTTOM TANK / VAC MOTOR ASSEMBLY

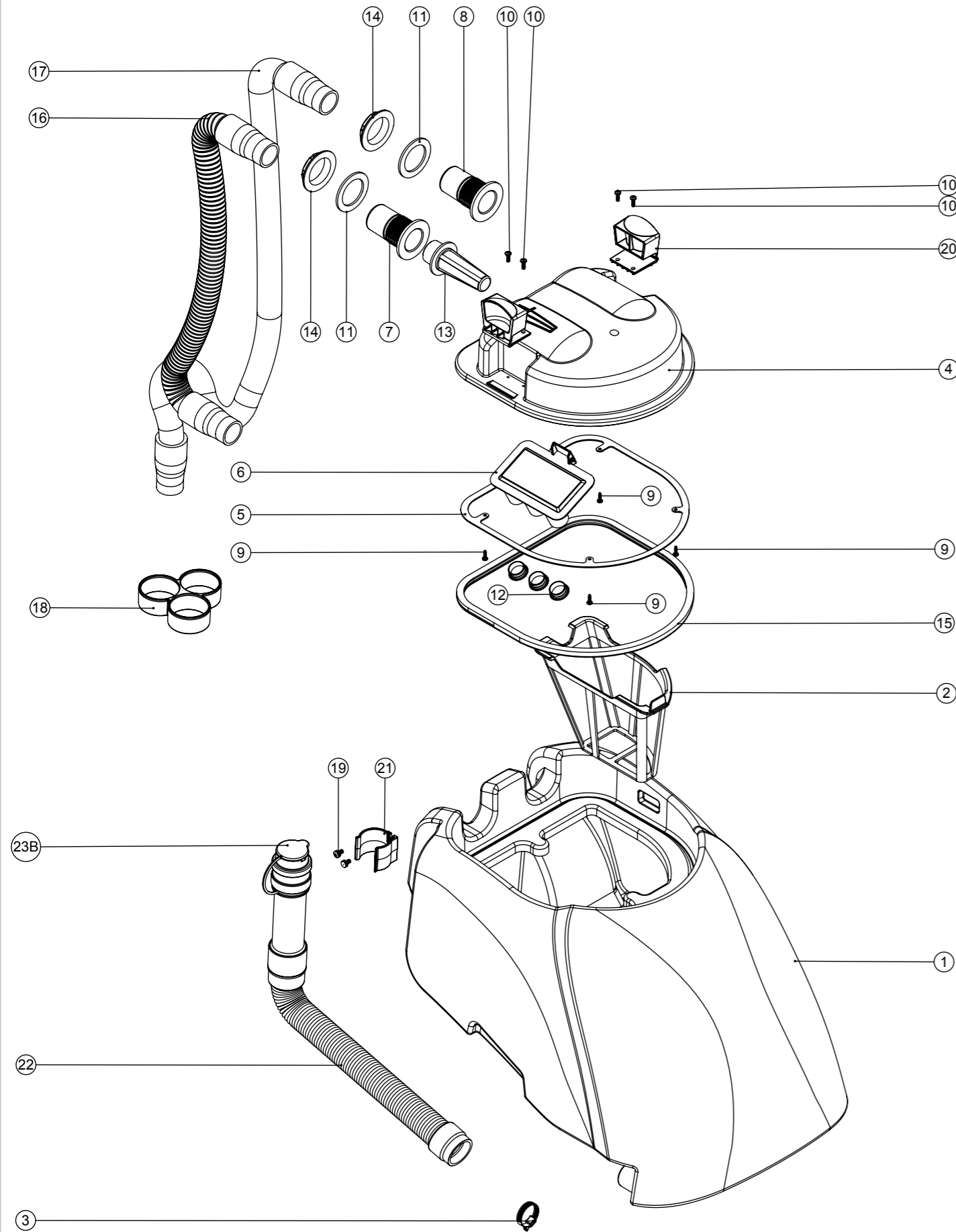
Provisional

ITEM:	PART No:	Description	Comments:	QTY.
1	237657	TT.4055 BOTTOM TANK MOULDING (GRAPHITE)		1
	237689	TT.4055 BOTTOM TANK MOULDING (GRAPHITE) EP		1
2	202008	MOTOR CAP GASKET		1
3	304417	MAINS MOTOR MOUNT WELD ASSEMBLY		1
4	205443	230V 2 STAGE D.I BYPASS ACUSTEK MOTOR (BL21104T) (MARKED 230V) TCO		1
	321935	120V VAC MOTOR ASSEMBLY C/W 170MM LONG MOTOR LEAD	110V/50Hz & 120V/60Hz NACE 8A OVERLOAD, OLDER BLUE MACHINES	1
	905736	120V 800W VAC MOTOR ASSEMBLY C/W 170MM LONG MOTOR LEAD	120V 60Hz 800W VAC. NACE. 15A OVERLOAD, GREY MACHINES	1
5	219569	NO8.1/2 INCH. LG.POZI-PAN.SCREW.STAINLESS STEEL.PLASTITE		4
6	219310	RUBBER WASHER		1
7	392441	TT4045/55 VAC MOTOR BACK PLATE		1
8	237526	38MM RED DRAIN HOSE CONNECTOR		1
9	206116	BLACK NUT		1
10	901539	ELBOW ANGLE CONNECTOR 3/8 PARALLEL THREAD C/W O-RING TO 12MM PUSH IN		1
11	213025	DUMP HOSE		1
12	208956	SILENCER FOAM TUBE 150MM		1
13	208583	DIP MOULDED ELBOW (MAINS VERSION)		1
14	902133	SPRING WIRE CLAMP (YDNAC-Y8010356)		1
15	901916	28mm HOSE CLIP		1
18	237754	35-38MM HOSE CLIP		2
17	237691	SQUEEGEE LIFT HANDLE		1
	902324	RED SQUEEGEE LIFT HANDLE		1
18	208801	TT MOTOR GASKET		1
19	208799	TT MOTOR PLATE GASKET		1
20	291118	M5 STAINLESS STEEL WASHER 19MM OD		1
21	208962	TT LIFTING WIRE		1
22	219721	M5 STAINLESS STEEL FULL NUT		1
23	219633	M5 STAINLESS STEEL NYLON INSERT NUT		1
24	219644	M5 FORM G STAINLESS STEEL WASHER		4
25	202069	BOTTOM MOTOR GASKET		1
26	207128	CLEAN TANK INLET FILTER		1
	903543	CLEAN TANK INLET FILTER (RED)		1
27	237268	FILLER CAP LID		1
	903544	FILLER CAP LID (RED)		1
28	208960	TTB/TT FILLING HOSE		1
29	220403	CABLE CLIP		2
30	404216	HANDLE MOUNT WELD ASSEMBLY - Z/PL		1
31	219558	M5 STAINLESS STEEL NUTSERT		3
32	291124	M10 PENNY WASHER STAINLESS STEEL		2
33	219716	M8 FORM G STAINLESS STEEL WASHER		8
34	219639	M8 STAINLESS STEEL NYLON INSERT NUT		4
35	219686	M4 X 20MM LONG STAINLESS STEEL POZI PAN MACHINE SCREW		1
36	219687	M4 STAINLESS STEEL NYLON INSERT NUT		1
37	219895	M10 X 35MM LONG HEXAGONAL STAINLESS STEEL SCREW		1
38	291123	M8 X 75 LONG HEX HEAD BOLT STAINLESS STEEL		4
39	219897	M10 STAINLESS STEEL NYLON INSERT NUT		1
40	900986	NYLON GROMMET NUT (PLASTIC INSERT TO SUIT No 8 PLASTITE SCREW)		4
41	219568	NO8.3/4 INCH LG.POZI-PAN.SCREW.STAINLESS STEEL.PLASTITE		4
42	903341	32MM HOSE CAP RED (C/W 8MM HOLE)		2
43	904403	BARBED RIVET BLACK		2
44	902275	VAC PLATE GASKET		1
45	291135	M5 X 10MM LONG STAINLESS STEEL POZI PAN SEMS SCREW		6
46	291132	M5 X 16MM LONG STAINLESS STEEL POZI PAN SEMS SCREW		7
47	903539	HANDLE MOUNT COVER PAINTED SILVER		2
48	904108	FLOAT STOP MOULDING		2
49	904109	FLOAT MOULDING		1

Numatic International Spare Parts

Model No: TT4045 (TT1117) & TT4055 (TT1120) TOP TANK ASSEMBLY

Internal Code: 244498
 DRAWING: DRW-16795 ISS:A08
 MS5 14/07/2015



Numatic International Spare Parts

Model No: TT4045 (TT1117) & TT4055 (TT1120) TOP TANK ASSEMBLY

ITEM:	PART No:	Description	Comments:	QTY.
1	237656	TT.4055 TOP TANK MOULDING (BLUE)		1
	237731	TT.4055 TOP TANK MOULDING (RED)		1
	237733	TT.4055 TOP TANK MOULDING (LIGHT YELLOW)		1
	237735	TT.4055 TOP TANK MOULDING (GREEN)		1
	901780	TT.4055.TOP TANK MOULDING (GRAPHITE)		1
2	207000	GRIT FILTER BASKET		1
3	206209	A.B.A HOSE CLIP		1
4	237381	INTEGRATED CHASSIS SEPARATOR		1
5	392200	FILTER GASKET RING		1
6	237090	SEPARATOR FLOAT MOULDING (MK 2)		1
7	237526	38MM RED DRAIN HOSE CONNECTOR		1
8	237018	38MM DRAIN HOSE CONNECTOR		1
9	219852	NO6 X 1/2 LONG POZI PAN STAINLESS STEEL SELF TAP SCREW		4
10	219569	NO8.1/2 INCH. LG.POZI-PAN.SCREW.STAINLESS STEEL.PLASTITE		4
11	219310	RUBBER WASHER		2
12	206315	TUBE END PLUG		3
13	206265	TT/B 345 BARREL FILTER		1
14	206116	BLACK NUT		2
15	208591	NEW SEPARATOR GASKET		1
16	213058	VAC HOSE 650MM X Ø38MM		1
17	280019	35MM X 690MM LONG 3:1 STRETCH HOSE (SHORT & LONG CUFF)		1
18	237718	HOSE GUIDE		1
19	291135	M5 X 10MM LONG STAINLESS STEEL POZI PAN SEMS SCREW		2
20	902919	CLIP MOULDING (RED)		2
	229494	CLIP MOULDING (GREY)		2
21	237382	ACETAL HOSE CLIP MOULDING		1
22	901548	35MM X 250MM STRETCH HOSE (3:1) C/W ADJUSTABLE CUFF + CAP		1
23B	900903	HOSE CLOSURE REPLACEMENT KIT (35MM-38MM STRETCH HOSE)	SPARE PART	1

WIRING DIAGRAM

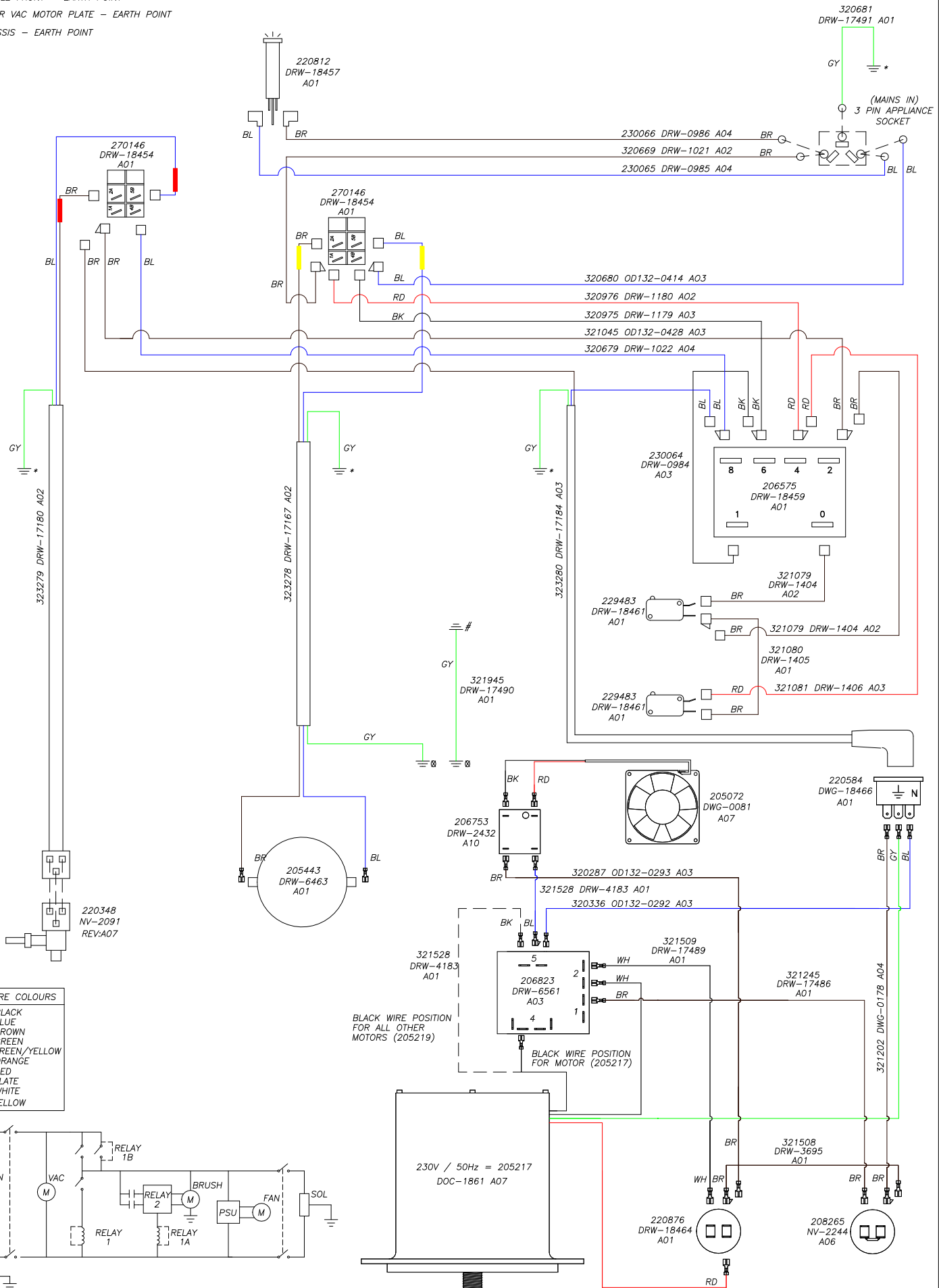
COMP. No
123446

DRG. No
DRW-18548

WIRING DIAGRAM.TWINTEC.1S.3W.230.50.NT.PLG

ISSUE	REVISION	DRAWN	APPD.	DATE
A05	323280 & 323278 REVISIONS UPDATED REF ECO-18559	MS	MC	4/08/15

- * = HANDLE FRONT - EARTH POINT
- # = INNER VAC MOTOR PLATE - EARTH POINT
- ⊞ = CHASSIS - EARTH POINT



KEY: WIRE COLOURS

BK	- BLACK
BL	- BLUE
BR	- BROWN
GR	- GREEN
GY	- GREEN/YELLOW
OR	- ORANGE
RD	- RED
SL	- SLATE
WH	- WHITE
YL	- YELLOW

BLACK WIRE POSITION FOR ALL OTHER MOTORS (205219)

BLACK WIRE POSITION FOR MOTOR (205217)

