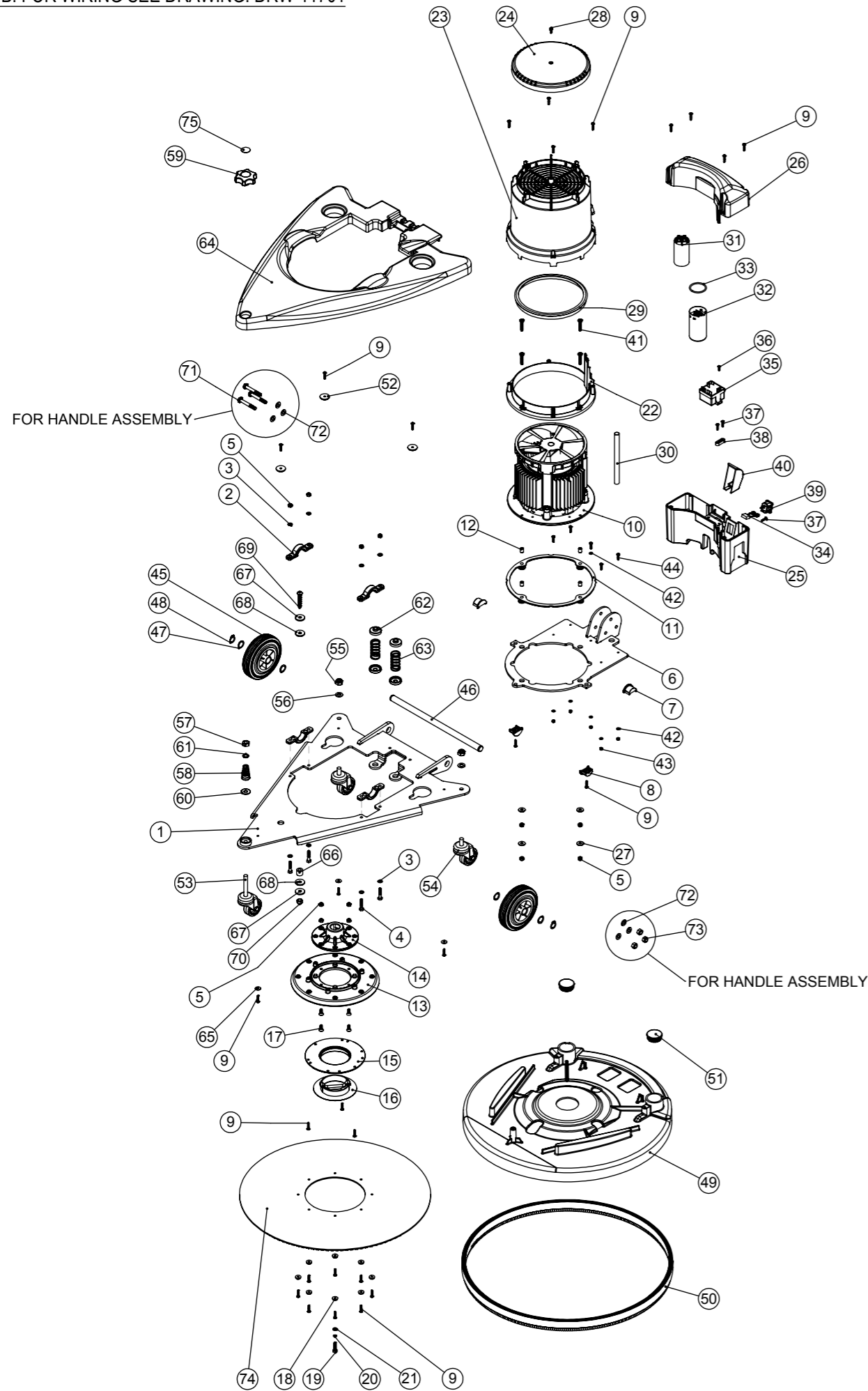


# Numatic International Spare Parts

Model No: HNS-1550 BASE ASSEMBLY EXP

DRAWING: DRW-15027 ISS:A01.08

NB: FOR WIRING SEE DRAWING: DRW-11701



# Numatic International Spare Parts

Model No: HNS-1550 BASE ASSEMBLY EXP

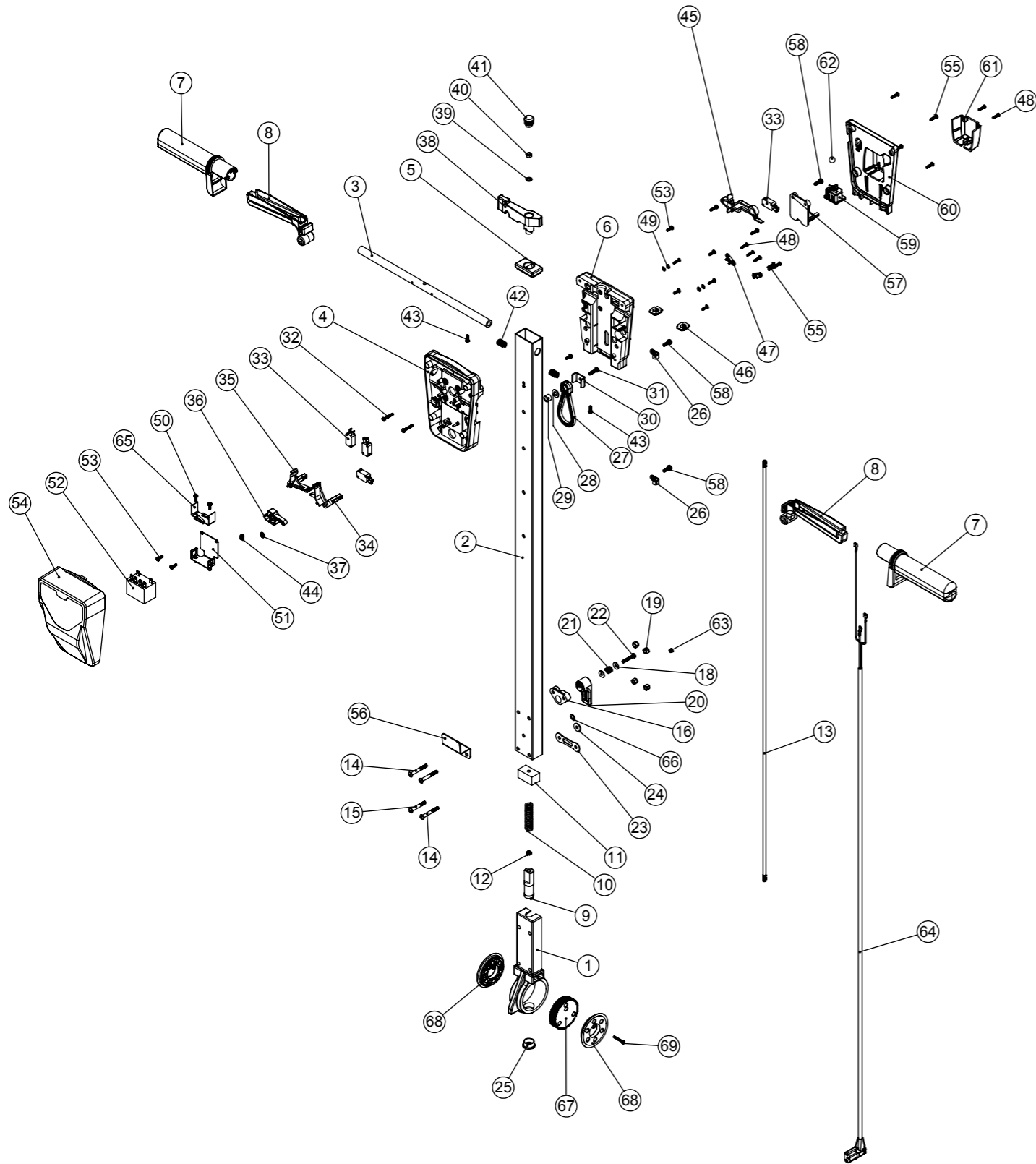
ITEM:	PART No:	Description	QTY.
1	900079	MAIN PLATE WELDED ASSEMBLY	1
2	900114	PIVOT SUPPORT CASTING	4
3	219560	M6 FORM B STAINLESS STEEL WASHER	8
4	291022	M6 X 30MM LONG STAINLESS STEEL HEXAGONAL HEAD BOLT	4
5	219642	M6 STAINLESS STEEL NYLON INSERT NUT	12
6	900087	MOTOR PLATE WELDED ASSEMBLY	1
7	900100	CENTRE PIVOT BOTTOM MOULDING	2
8	900099	CENTRE PIVOT TOP MOULDING	2
9	219568	No8 X 3/4 INCH LONG POZI PAN STAINLESS STEEL SCREW	27
10	205160	INDUCTION MOTOR 4-POLE 1500W 220-240V 50Hz	1
11	227557	BOTTOM MOTOR GASKET	1
12	900112	11MM X OD 8.75MM SPACER	4
13	900124	DRIVE BOARD SUPPORT MOULDING	1
14	900110	COUPLING CASTING	1
15	217501	CENTRE MOULDING TYPE A	1
16	217500	PAD HOLDER CLIP MOULDING	1
17	291012	M6 X 16MM LONG COUNTERSUNK MILD STEEL Z/PL SOCKET SCREW	4
18	219573	SCREW INSULATOR	8
19	219925	M6 x 25MM LONG STAINLESS STEEL HEX SCREW	1
20	219718	M6 STAINLESS STEEL SPRING WASHER	1
21	219870	M6 FORM A WASHER STAINLESS STEEL	1
22	237500	BOTTOM SECTION MOULDING	1
23	330082	HFM MID SECTION MOULDING PRINTED (1500W)	1
24	237503	LID MOULDING (HFM)	1
25	330081	HFM CAPACITOR BOX BOTTOM MOULDING C/W INSERT	1
26	237505	HFM CAPACITOR BOX TOP MOULDING	1
27	219647	M6 FORM G STAINLESS STEEL WASHER	4
28	219471	M4 X 12MM LONG POZI PAN SEMS SCREW	1
29	237412	HFM TOP MOTOR GASKET	1
30	330086	MOTOR WIRE SLEEVE	1
31	220897	MOTOR RUN CAPACITOR 25 MFD 450V	1
32	205088	MOTOR START CAPACITOR 150MFD 280V C/W RESISTOR AND M8 STUD	1
33	208534	O RING 39.5MM ID x 3 DIA	1
34	230136	SUPPRESSOR ASSEMBLY	1
35	206823	230V SINGLE SPEED VOLTAGE RELAY	1
36	219318	No6 X 1/2 INCH LONG POZI PAN PLASTITE SCREW	1
37	219914	NO6 X 5/8 INCH LONG POZI-PAN PLASTITE STAINLESS STEEL SCREW	3
38	227008	BLACK CABLE CLAMP	1
39	220584	RENDAR CLIP IN PLUG	1
40	229213	PLUG COVER	1
41	219984	M6 X 30MM LG POZI-PAN STAINLESS STEEL MACHINE SCREW	4
42	219688	M4 FORM A STAINLESS STEEL WASHER	6
43	219687	M4 STAINLESS STEEL NYLON INSERT NUT	5
44	219862	M4 X 16MM LONG POZI PAN STAINLESS STEEL SCREW	5
45	229060	WHEEL GREY BLACK HUB	2
46	900109	AXLE	1
47	219219	21.5MM X 16.3MM WAVE WASHER	4
48	229051	EXTERNAL CIRCLIP	2
49	900088	DECK MOULDING	1
50	900113	BURNISHER EXTRUSION WITH BRUSH FILL (CUT TO 1730MM MAX)	1
51	229400	BLACK END STOP	2
52	900122	WASHER (OD25MM ID5MM)	3
53	900105	50MM CASTOR WITH GREY RUBBER TYRE M10 X 70	1
54	900106	50MM CASTOR WITH GREY RUBBER TYRE M10 X 20	2
55	219897	M10 STAINLESS STEEL NYLON INSERT NUT	2
56	219903	M10 FORM A STAINLESS STEEL WASHER	2
57	219963	M10 STAINLESS STEEL FULL NUT	1
58	229175	CONICAL SPRING	1
59	208354	M10 LOBE KNOB	1
60	900119	SPACER	1
61	900120	WASHER (OD16MM ID10MM)	1
62	900121	SPRING RETAINER MOULDING	4
63	208782	SPRING (C5517490)	2
64	900118	CHASSIS COVER MOULDING	1
65	219644	M5 FORM G STAINLESS STEEL WASHER	3
66	900104	SPACER	1
67	900115	SPACER	2
68	900116	WASHER (OD25MM ID8MM)	2
69	219822	M8 X 45MM LONG SOCKET BUTTON STAINLESS STEEL HEAD BOLT	1
70	219639	M8 STAINLESS STEEL NYLON INSERT NUT	1
71	219066	M8X55MM LG.HEX.BOLT STAINLESS	3
72	219010	M8 FORM A WASHER	6
73	219078	M8 NYLON INSERT NUT	3
74	900103	BURNISHER 508MM DRIVE BOARD	1
75	900133	LOAD STICKER	1

# Numatic International Spare Parts

**Model No:** HNS-1550 HANDLE ASSEMBLY EXP

DRAWING: DRW-17943 ISS:A01.00

NB: FOR WIRING SEE DRAWING: DRW-11789



# Numatic International Spare Parts

**Model No:** HNS-1550 HANDLE ASSEMBLY EXP

ITEM:	PART No:	Description	Comments	QTY.
1	900398	HANDLE CASTING MACHINED (MODIFIED 229081)		1
2	429136	HFM HANDLE TUBE PAINTED (1025mm)		1
3	338269	CROSS TUBE		1
4	227576	FRONT INNER HALF MOULDING		1
5	227582	HANDLE PLUG MOULDING		1
6	227577	REAR INNER HALF MOULDING		1
7	227580	HAND GRIP MOULDING		2
8	227581	TRIGGER MOULDING		2
9	229073	GEAR LOCKING PIN		1
10	229138	SPRING		1
11	229030	ANTI VIBRATION PAD		1
12	219099	M6 HALF NUT		1
13	208432	1035MM HANDLE LOCKING ROD		1
14	219881	M6 X 45MM SOCKET BUTTON HEAD SCREW		3
15	219807	M6 X 40MM LONG SOCKET BUTTON HEAD BOLT		1
16	227806	CABLE RELEASE BASE MOULDING		1
17	219076	M5 NYLON INSERT NUT		1
18	219644	M5 FORM G STAINLESS STEEL WASHER		3
19	219088	M6 NYLON INSERT NUT		4
20	227807	CABLE RELEASE TOP MOULDING		1
21	206599	SPRING (REF:C5514370)		1
22	219720	M5 X 30MM LONG STAINLESS STEEL POZI PAN SCREW		1
23	229139	CABLE CLAMP		1
24	219008	M6 FORM G WASHER		1
25	229099	25MM DIA HOLE PLUG		1
26	219393	P CLIP		2
27	226008	STRESS RELIEF		1
28	219010	M8 FORM A WASHER		1
29	226006	SPACER (BLACK)		1
30	329231	STRESS RELIEF BRACKET		1
31	219054	M5 X 20MM LONG POZI PAN SCREW		1
32	219811	NO8 X 1 INCH LONG POZI-PAN SELF TAP SCREW		2
33	229483	SNAP ACTION SWITCH		4
34	227585	LEFT HAND SWITCH OPERATING LEVER MOULDING		1
35	227586	RIGHT HAND SWITCH OPERATING LEVER MOULDING		1
36	227587	CENTRE SWITCH OPERATING LEVER MOULDING		1
37	219805	4MM SPIREFIX		1
38	227583	ADJUSTMENT LEVER MOULDING		1
39	219493	M6 NYLON WASHER		1
40	219642	M6 STAINLESS STEEL NYLON INSERT NUT		1
41	20638V	19MM BLACK TUBE END STOP		1
42	219803	TRIGGER COMPRESSION SPRING		2
43	219270	NO8 X 1/2 INCH LONG POZI PAN SELF TAP SCREW		2
44	219804	SWITCH COMPRESSION SPRING		1
45	227584	INTERLOCK LEVER MOULDING		1
46	237467	BLANKING PLUG WITH HOLE		2
47	229669	LOLINE HANDLE CABLE CLAMP		2
48	219107	NO6 X 5/8 INCH LONG POZI PAN PLASTITE SCREW		8
49	219206	M4 FORM A WASHER		4
50	219471	M4 X 12MM LONG POZI PAN SEMS SCREW		3
51	303526	NUTSERTED RELAY MOUNTING BRACKET		1
52	206575	240V / 25A RELAY		1
53	219101	NO8 X 1/2 INCH LONG POZI PAN PLASTITE SCREW		6
54	229679	TRADLINE TWINTEC HANDLE FRONT COVER MOULDING		1
55	219105	NO8 X 5/8 INCH LONG POZI PAN PLASTITE SCREW		8
56	329000	HANDLE BRACKET		1
57	237425	PTO SUPPORT MOULDING		1
58	219045	M5 X 16MM LONG POZI PAN SEMS SCREW		4
59	220964	APPLIANCE OUTPUT SOCKET		1
60	237426	FM REAR COVER MOULDING		1
61	237427	FM PLUG COVER MOULDING		1
62	229050	12MM (STAINLESS STEEL) BALL BEARING		1
63	229009	BLANKING PLUG		1
64	236161	HFM HANDLE CORD SET ASSEMBLY		1
65	206500	RELAY BRACKET		1
66	219007	M6 FORM B WASHER		1
67	900397	MINI ADJUSTMENT GEAR		1
68	900396	ADJUSTMENT GEAR SPACER		2
69	291150	NO6 X 1 INCH LONG POZI PAN SCREW S/S		1