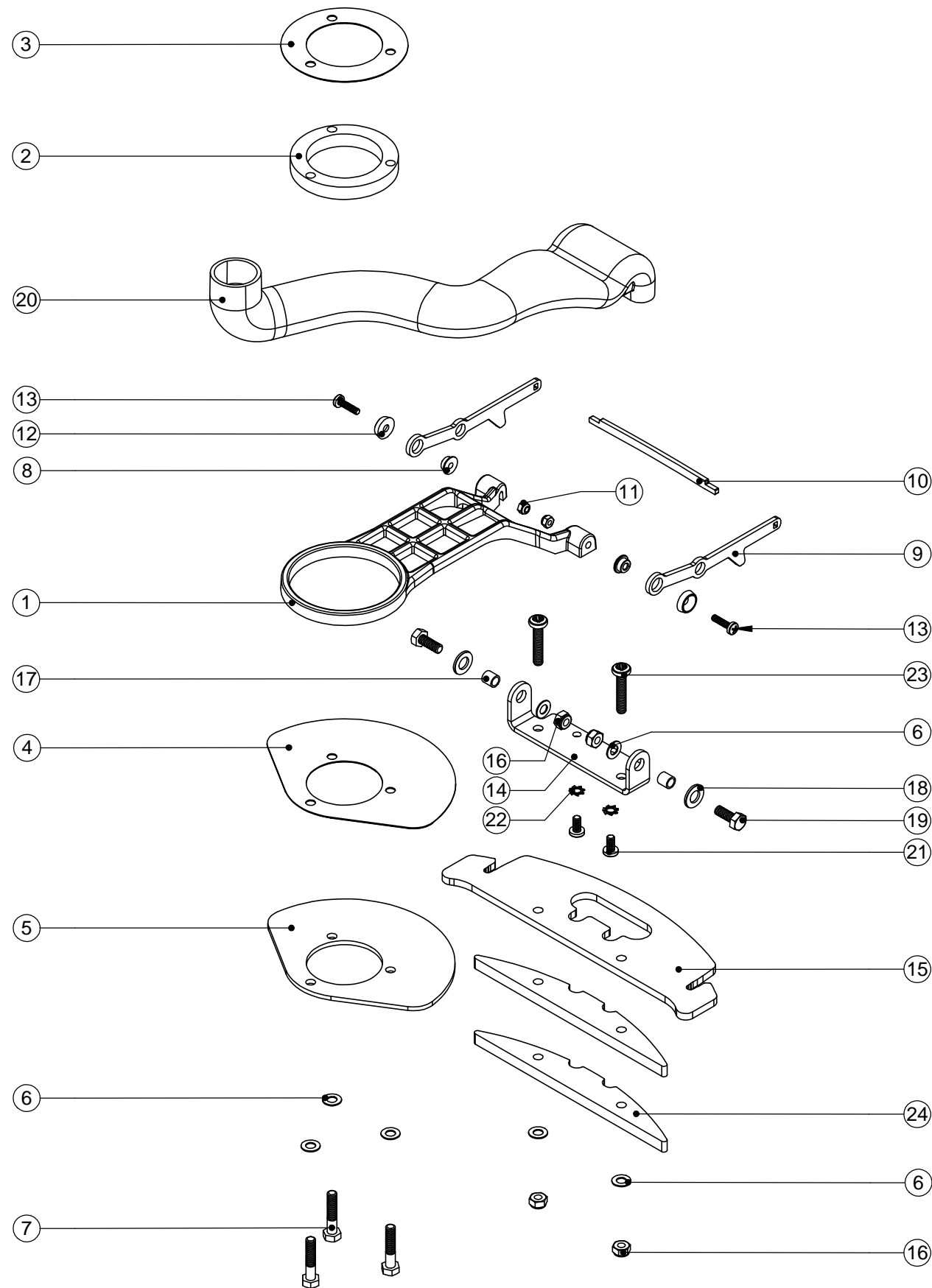


**Numatic International Spare Parts**

**Model No:** SWING ARM ASSEMBLY EXPLODED DRAWING

234839  
DRAWING: DRW-10739 ISS:A01  
31/10/2011



**Numatic International Spare Parts**

**Model No:** SWING ARM ASSEMBLY EXPLODED DRAWING

ITEM NO.	PART No	DESCRIPTION	QTY.
1	429133	TTB 1840 SWING ARM PAINTED	1
2	208449	TTB 1840 SWING ARM CENTRE PIVOT	1
3	208491	TTB 1840 NYLON DISC	1
4	208482	TTB 1840 SWING ARM NYLON PLATE	1
5	429126	TTB 1840 SWING ARM BOTTOM PLATE	1
6	219560	M6 FORM B STAINLESS STEEL WASHER	7
7	291022	M6 X 30MM LONG STAINLESS STEEL HEXAGONAL HEAD BOLT	3
8	237265	PIVOT BUSH	2
9	392120	TTB 1840 SQUEEGEE PIVOT ARM	2
10	392124	TTB 1840 SQUEEGEE LIFT PLATE	1
11	219687	M4 STAINLESS STEEL NYLON INSERT NUT	2
12	219573	SCREW INSULATOR	2
13	219862	M4 X 16MM LONG POZI PAN STAINLESS STEEL SCREW	2
14	392119	PIPE CONNECTING BRACKET	1
15	429129	TTB 1840 SQUEEGEE SKID PLATE	1
16	219642	M6 STAINLESS STEEL NYLON INSERT NUT	4
17	208475	8MM SPACER	2
18	219578	M8 FORM A STAINLESS STEEL WASHER	2
19	219719	M6 X 16MM LONG HEXAGONAL STAINLESS STEEL HEAD BOLT	2
20	330068	FLUID TUBE PROCESSED	1
21	219668	M5 X 10MM LONG POZI PAN STAINLESS STEEL SCREW	2
22	291020	M5 STAINLESS STEEL EXTERNAL SHAKEPROOF LOCK WASHER	2
23	219984	M6 X 30MM LG POZI-PAN STAINLESS STEEL MACHINE SCREW	2
24	429131	TTB 1840 ADDITIONAL WEIGHT	2

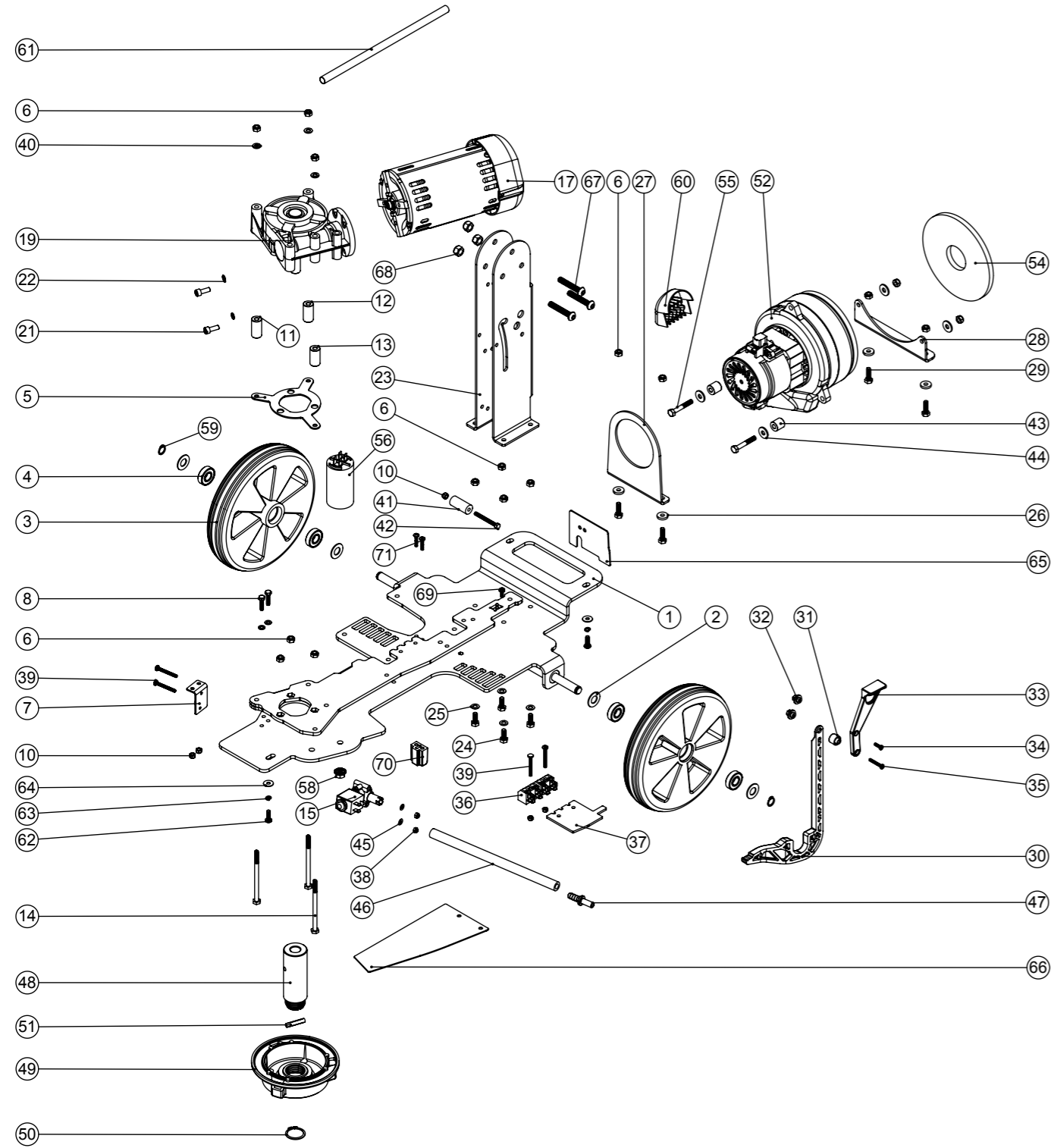
# Numatic International Spare Parts

**Model No:** TT 1840 MAINS BASE ASSEMBLY DRAWING (110-120V / 220-240V 50/60Hz)

NB: FOR WIRING SEE DRAWING: WD-0????

234937

DRAWING: DRW-13250 ISS:A04  
31/10/2014



# Numatic International Spare Parts

**Model No:** TT 1840 MAINS BASE ASSEMBLY DRAWING (110-120V / 220-240V 50/60Hz)

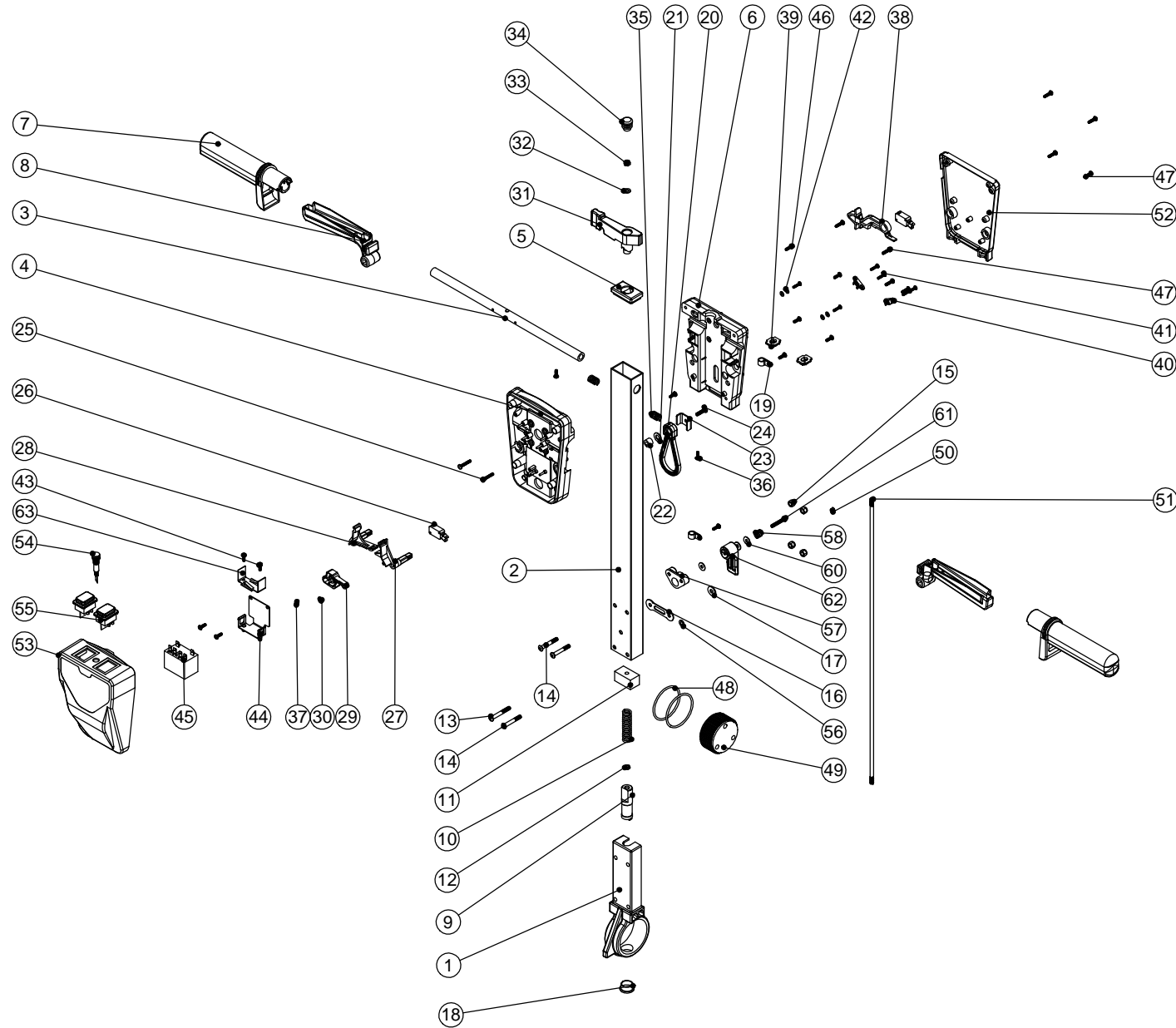
ITEM NO.	PART No.	DESCRIPTION	QTY.
1	429137	TT 1840 CHASIS (MAINS) Z/PL	1
2	208490	TTB 1840 WHEEL WASHER	4
3	208556	TT/B 1840 WHEEL	2
4	206637	STAINLESS STEEL BEARING	4
5	429127	NUT RETAINING PLATE Z/PL	1
6	219642	M6 STAINLESS STEEL NYLON INSERT NUT	16
7	392117	TTB 1840 SOLENOID BRACKET	1
8	291029	M5.20MM LG.HEX.SCREW S/S	2
9	219355	M5 FORM A STAINLESS STEEL WASHER	2
10	219633	M5 STAINLESS STEEL NYLON INSERT NUT	3
11	208461	30MM GEARBOX SPACER	1
12	208460	29MM GEARBOX SPACER	1
13	208459	28MM GEARBOX SPACER	1
14	291021	M6 X 90MM LONG STAINLESS STEEL HEXAGONAL HEAD BOLT	3
15	220348	SOLENOID VALVE 240V 50/60HZ	1
15	220350	SOLENOID VALVE 110V 50/60HZ (110-120V)	1
17	205255	220-240V 50/60Hz BRUSH DRIVE MOTOR WITH FAN	1
17	205259	120V / 60Hz BRUSH DRIVE MOTOR WITH FAN (110-120V)	1
19	206754	EMD GEARBOX (GB12) (18.67:1 RATIO)	1
19	206791	EMD GEARBOX (GB12) (21:1 RATIO) (120V)	1
21	219887	M6 X 16MM STAINLESS STEEL CAP HEAD SCREW	2
22	219544	M6 SHAKEPROOF WASHER	2
23	392092	TTB 1840 HANDLE MOUNTING BRACKET	1
24	219719	M6 X 16MM LONG HEXAGONAL STAINLESS STEEL HEAD BOLT	4
25	219560	M6 FORM B STAINLESS STEEL WASHER	4
26	208472	RUBBER SPACER	4
27	429124	TTB 1840 FRONT MOTOR PLATE	1
28	429125	TTB 1840 REAR VAC MOTOR PLATE	1
29	219976	M6 X 20MM LONG HEXANGONAL HEAD SET SCREW	4
30	237238	TTB 1840 SQUEEGEE LIFT ARM	1
31	237240	TTB 1840 LIFT SPACER	1
32	237241	TTB 1840 SCREW END	2
33	237239	TTB 1840 SQUEEGEE LIFT HANDLE	1
34	219667	No6 X 1/2" LONG PLASTITE SCREW	1
35	219602	No6 X 1 INCH LONG POZI PAN PLASTITE SCREW	1
36	208532	TAB TERMINAL BLOCK 2 POLE	2
37	392317	RAISER PLATE	1
38	219687	M4 STAINLESS STEEL NYLON INSERT NUT	4
39	219703	M4 X 35MM LONG STAINLESS STEEL POZI PAN SCREW	4
40	219870	M6 FORM A WASHER STAINLESS STEEL	3
41	208465	TTB 1840 HANDLE SPACER	1
42	219706	M5 X 45MM LONG STAINLESS STEEL HEXAGONAL BOLT	1
43	229187	15MM SPACER	2
44	219008	M6 FORM G WASHER	4
45	219688	M4 FORM A STAINLESS STEEL WASHER	2
46	303962	SOLENOID TUBE (230MM)	1
47	206796	BARBED CONNECTOR	1
48	208447	TTB 1840 DRIVE SHAFT	1
49	314050	TTB 1840 MODIFIED CHUCK	1
50	230048	26MM EXTERNAL CIRCLIP	1
51	219523	GROOVED PIN	1
52	606334	TT1840 VAC MOTOR SPARES KIT	1
52	606335	TT1840 VAC MOTOR SPARES KIT (120V)	1
54	208477	MOTOR PAD	1
55	21965V	M6 X 40MM LONG HEX BOLT	2
56	220876	20 MFD MOTOR RUN CAPACITOR	1
55	208778	RUN CAP C/W 8MM STUD & FAST ON TAB TERMINALS (110-120V)	2
58	219754	M8 FLANGED NUT	1
59	219345	12MM EXTERNAL CIRCLIP	2
60	237218	TTB 1840 VAC DIFFUSER	1
61	330103	MOTOR WIRE SLEEVE (260MM CUT LENGTH)	1
62	219547	M5 X 16MM LONG POZI PAN STAINLESS STEEL SCREW	3
63	219861	M5 SINGLE COIL STAINLESS STEEL WASHER	3
64	219644	M5 FORM G STAINLESS STEEL WASHER	3
65	304461	TT1840 REAR SPLASH PLATE	1
66	304462	TT1840 MOTOR SPLASH PLATE	1
67	219822	M8 X 45MM LONG SOCKET BUTTON STAINLESS STEEL HEAD BOLT	3
68	219639	M8 STAINLESS STEEL NYLON INSERT NUT	3
69	219471	M4 X 12MM LONG POZI PAN SEMS SCREW	1
70	237532	UPPER LIFT BLOCK	1
71	219568	No8 X 3/4 INCH LONG POZI PAN STAINLESS STEEL SCREW	2

# Numatic International Spare Parts

**Model No:** TT 1840 (MAINS) HANDLE EXPLODED DRAWING ASSEMBLY

234938  
DRAWING: DRW-13355 ISS:A02  
21/05/2013

**NB: FOR WIRING SEE DRAWING: DRW-13476**



# Numatic International Spare Parts

**Model No:** TT 1840 (MAINS) HANDLE EXPLODED DRAWING ASSEMBLY

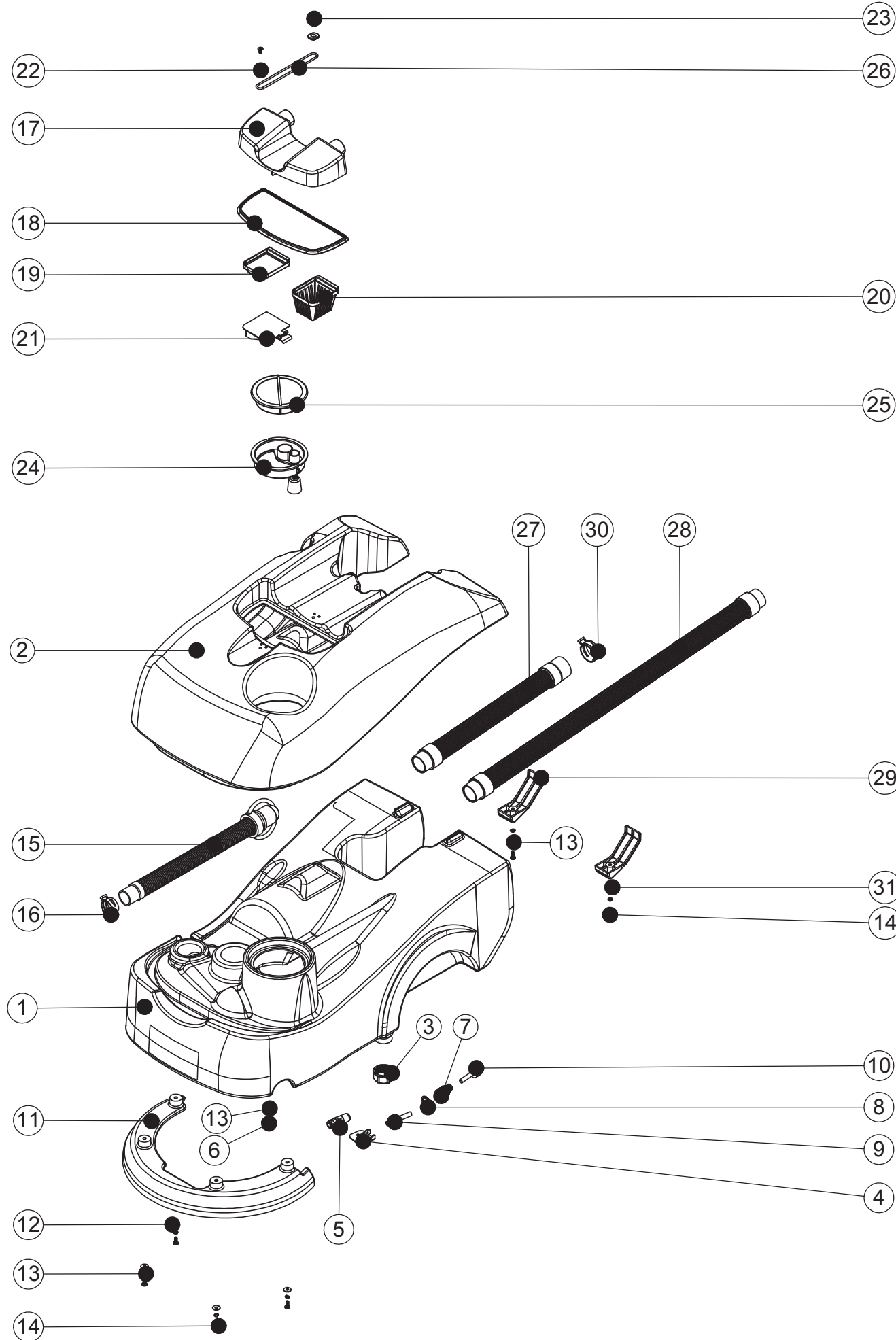
ITEM NO.	PART NO.	DESCRIPTION	QTY.
1	229081	HANDLE CASTING MACHINED	1
2	429132	TT 1840 HANDLE TUBE (MAINS) PAINTED	1
3	338269	CROSS TUBE	1
4	227576	FRONT INNER HALF MOULDING	1
5	227582	HANDLE PLUG MOULDING	1
6	227577	REAR INNER HALF MOULDING	1
7	227580	HAND GRIP MOULDING	2
8	227581	TRIGGER MOULDING	2
9	229073	GEAR LOCKING PIN	1
10	229138	SPRING	1
11	229030	ANTI VIBRATION PAD	1
12	219099	M6 HALF NUT	1
13	219881	M6 X 45MM SOCKET BUTTON HEAD SCREW	1
14	219807	M6 X 40MM LONG SOCKET BUTTON HEAD BOLT	3
15	219088	M6 NYLON INSERT NUT	4
16	229139	CABLE CLAMP	1
17	219008	M6 FORM G WASHER	1
18	229099	25MM DIA HOLE PLUG	1
19	219393	P CLIP	2
20	226008	STRESS RELIEF	1
21	219010	M8 FORM A WASHER	1
22	226006	SPACER (BLACK)	1
23	329231	STRESS RELIEF BRACKET	1
24	219054	M5 X 20MM LONG POZI PAN SCREW	1
25	219811	NO8 X 1 INCH LONG POZI-PAN SELF TAP SCREW	2
26	229483	SNAP ACTION SWITCH	2
27	227585	LEFT HAND SWITCH OPERATING LEVER MOULDING	1
28	227586	RIGHT HAND SWITCH OPERATING LEVER MOULDING	1
29	227587	CENTRE SWITCH OPERATING LEVER MOULDING	1
30	219805	4MM SPIREFIX	1
31	227583	ADJUSTMENT LEVER MOULDING	1
32	219493	M6 NYLON WASHER	1
33	219642	M6 STAINLESS STEEL NYLON INSERT NUT	1
34	20638V	19MM BLACK TUBE END STOP	1
35	219803	TRIGGER COMPRESSION SPRING	2
36	219270	No8 X 1/2 INCH LONG POZI PAN SELF TAP SCREW	4
37	219804	SWITCH COMPRESSION SPRING	1
38	227584	INTERLOCK LEVER MOULDING	1
39	237467	BLANKING PLUG WITH HOLE	2
40	229669	LOLINE HANDLE CABLE CLAMP	2
41	219107	No6 X 5/8 INCH LONG POZI PAN PLASTITE SCREW	6
42	219206	M4 FORM A WASHER	4
43	219471	M4 X 12MM LONG POZI PAN SEMS SCREW	3
44	303526	NUTSERTED RELAY MOUNTING BRACKET	1
45	206575	240V / 25A RELAY	1
46	219101	No8 X 1/2 INCH LONG POZI PAN PLASTITE SCREW	6
47	219105	No8 X 5/8 INCH LONG POZI PAN PLASTITE SCREW	8
48	219254	O RING 3MM DIA X 60MM I/D	2
49	229074	ADJUSTMENT GEAR	1
50	229009	BLANKING PLUG	1
51	215029	610MM HANDLE LOCKING ROD	1
52	227579	REAR COVER MOULDING	1
53	229748	FRONT COVER MOULDING (MAINS & BATTERY)	1
54	220812	230V NEON INDICATOR & RED LENS	1
55	208757	BLACK DPST ON/OFF SWITCH	2
56	219007	M6 FORM B WASHER	1
57	227806	CABLE RELEASE BASE MOULDING	1
58	206599	SPRING (REF:C5514370)	1
59	219076	M5 NYLON INSERT NUT	1
60	219644	M5 FORM G STAINLESS STEEL WASHER	3
61	219720	M5 X 30MM LONG STAINLESS STEEL POZI PAN SCREW	1
62	227807	CABLE RELEASE TOP MOULDING	1
63	206500	RELAY BRACKET	1

# Numatic International Spare Parts

Model No: TT 1840 TANK ASSEMBLY EXPLODED DRAWING

234939  
DRAWING: DRW-13251 ISS:A01  
27/02/2013

NB: FOR WIRING SEE DRAWING: WD-0???



# Numatic International Spare Parts

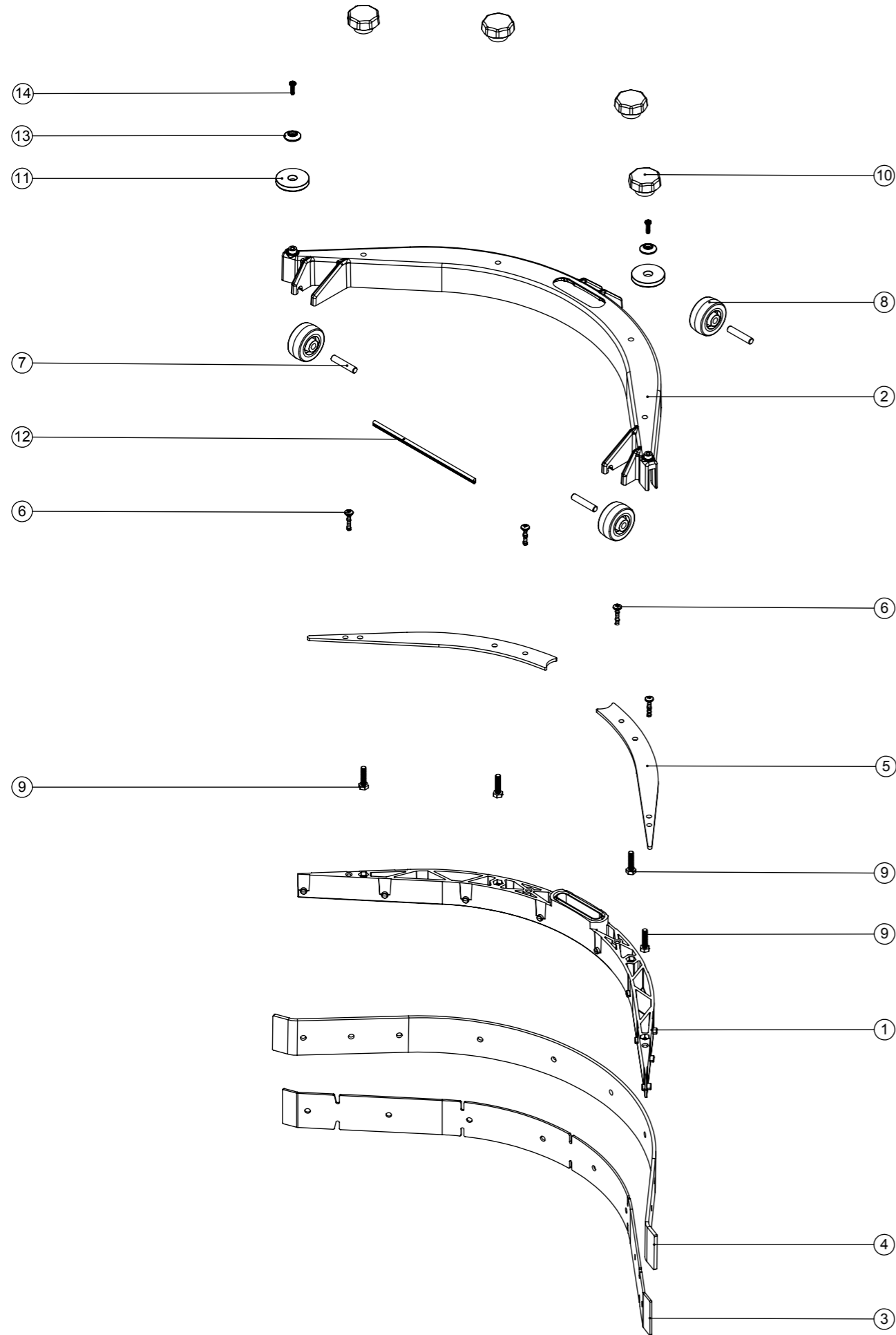
Model No: TT 1840 TANK ASSEMBLY EXPLODED DRAWING

ITEM NO.	PART NO.	DESCRIPTION	QTY.
1	237464	TT 1840 CLEAN TANK (MAINS)	1
2	237465	TTB 1840 COLLECTION TANK	1
3	208448	TANK DRAIN CAP	1
4	392125	TTB 1840 TAP PLATE	1
5	216260	MINI BALL VALVE	1
6	219668	M5 X 10MM LONG POZI PAN STAINLESS STEEL SCREW	1
7	208522	8MM PUSH FIT METAL BULKHEAD FITTING	1
8	208525	BONDED SEAL	1
9	303960	TANK FILTER TUBE	1
10	303961	TANK FILTER ASSEMBLY	1
11	237233	TTB 1840 DECK MOULDING	1
12	219644	M5 FORM G STAINLESS STEEL WASHER	4
13	219861	M5 SINGLE COIL STAINLESS STEEL WASHER	7
14	219740	M5 X 12MM LONG STAINLESS STEEL POZI PAN SCREW	6
15	303997	TTB 1840 DUMP HOSE ASSEMBLY	1
16	208471	CONSTANT TENSION CLIP	1
17	237230	TTB 1840 SEPARATOR MOULDING	1
18	237418	TTB 1840 SEPARATOR SEAL MOULDING	1
19	237232	TTB 1840 AIR FILTER PANEL	1
20	237411	TOP TANK FILTER	1
21	237231	TTB 1840 SHUT OFF FLAP	1
22	237397	O RING CLIP MOULDING	2
23	291008	M5 X 10MM LONG POZI PAN COUNTERSUNK STAINLESS STEEL SCREW	2
24	303985	TTB 1840 FILLER CAP ASSEMBLY	1
25	237268	FILLER CAP LID	1
26	208715	O RING (3mmDIA.95mm)	1
27	213055	TTB 1840 VAC HOSE C/W CUFFS	1
28	213054	SUCTION HOSE	1
29	237466	SKID PLATE MOULDING	2
30	208537	VAC HOSE CONSTANT TENSION CLIP	1
31	219355	M5 FORM A STAINLESS STEEL WASHER	2

# Numatic International Spare Parts

Model No: TTB 1840 SQUEEGEE EXPLODED DRAWING ASSEMBLY

234807  
DRAWING: DRW-7011 ISS:A04  
08/08/2012



# Numatic International Spare Parts

Model No: TTB 1840 SQUEEGEE EXPLODED DRAWING ASSEMBLY

ITEM NO.	PART NO.	DESCRIPTION	QTY.
1	237235	TTB 1840 SQUEEGEE INNER MOULDING	1
2	237236	TTB 1840 SQUEEGEE OUTER MOULDING	1
3	208456	TTB 1840 SQUEEGEE FRONT BLADE	1
4	208457	TTB 1840 SQUEEGEE REAR BLADE	1
5	429130	TTB 1840 SQUEEGEE SIDE PLATE Z/PL	2
6	219568	No8 X 3/4 INCH LONG POZI PAN STAINLESS STEEL SCREW	4
7	208610	TTB 1840 SQUEEGEE AXLE	3
8	208454	TTB 1840 SQUEEGEE WHEEL	3
9	291029	M5.20MM LG.HEX.SCREW S/S	4
10	208455	TTB 1840 SQUEEGEE KNOB	4
11	237266	TTB 1840 BUFFER WHEEL	2
12	209077	SQUEEGEE SEAL EXTRUSION	1
13	208603	NYLON FINISHING WASHER (BLACK)	2
14	291053	3.5 X 12MM POZI PAN PLASTITE SCREW S/S	2