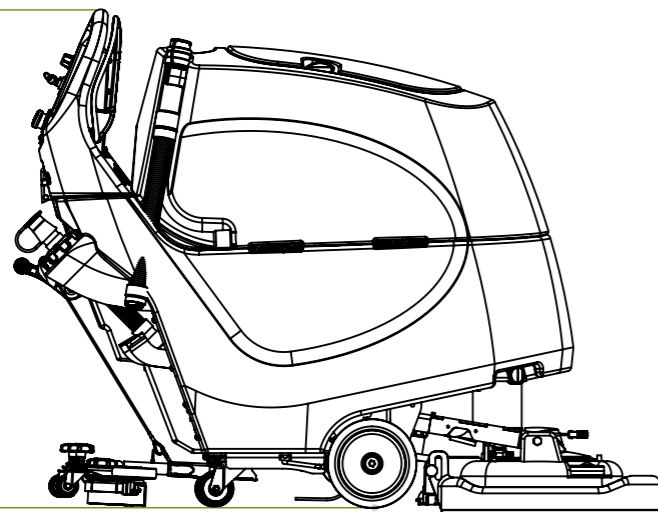
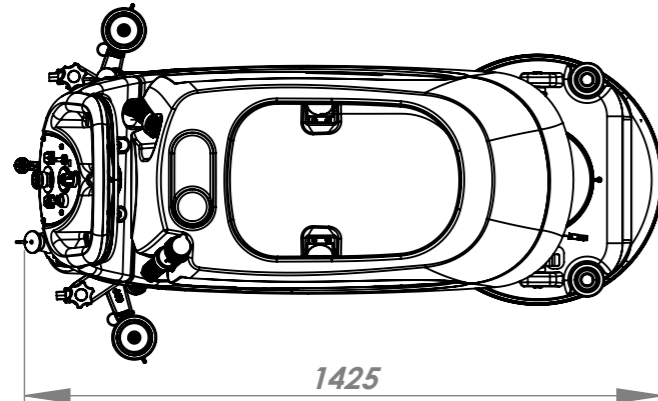
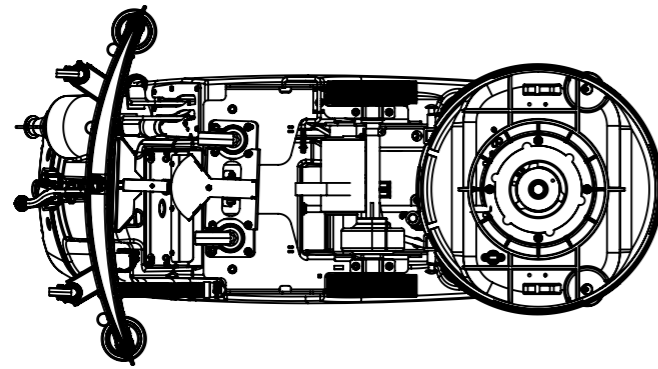
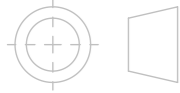
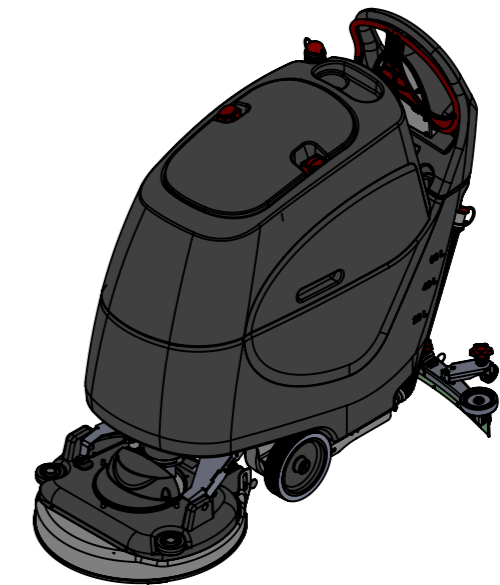
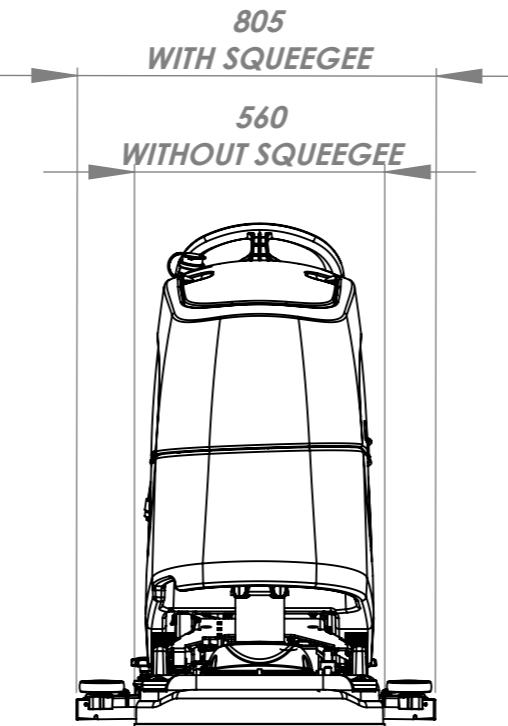


THIRD ANGLE PROJECTION



| | | | |
|---------------------------------------|--|---|--|
| BRUSH WEIGHT | 24kg / 32kg 53lbs / 70.5lbs | GROSS WEIGHT (i.e. with liquid) | 80Ah: 223.5kg 100Ah: 232.5kg 80Ah: 492.7lbs 100Ah: 512.5lbs |
| BRUSH PRESSURE | 14.4 / 19 g/cm ² 0.204 / 0.270 lbs/in ² | NETT WEIGHT (i.e. NO liquid) | 80Ah: 163.5kg 100Ah: 172.5kg 80Ah: 301lbs 100Ah: 380lbs |
| PAD PRESSURE | 12.2 / 16 g/cm ² 0.173 / 0.227 lbs/in ² | POWER SOURCE | GELL BATTERY 24 VOLT (2x 12V) 80Ah / 100Ah |
| CLEANING AREA | 970m ² /HOUR @ 2 kph 10440ft ² /HOUR @ 1.25 mph | RUN TIME (BATTERY LIFE) | 2.25h MAX |
| BRUSH MOTOR POWER | 300W | RECHARGING TIME | 8 HRS 10A charger *option for external charger |
| BRUSH SPEED | 100 rpm | INTERNAL CHARGER INPUT | 350W |
| BRUSH DIA | 550mm 22in | INTERNAL CHARGER OUTPUT | 10A DC |
| PAD DIA | 508mm 20in | BATTERY WEIGHT (TOTAL) | 80Ah : 54.5kg 100Ah: 63.5kg 80Ah : 120lbs 100Ah: 140lbs |
| VAC MOTOR MAX. POWER | 400W | HEIGHT | 1120mm 44in |
| VAC MOTOR - SUCTION @ SQUEEGEE | 120 mbar | LENGTH | 1425mm 56in |
| VAC MOTOR - AIRFLOW @ SQUEEGEE | 24.2 l/sec (6.4 US gal/sec) | WIDTH | 560mm (805mm) 22in (31.7in) |
| WATER CAPACITY | 60L 15.8 US gal | SQUEEGEE LENGTH | 944mm 37.1in |
| WATER FLOW - AVERAGE | 0-2 l/min 0-0.53 US gal/min | SOUND PRESSURE LEVEL | 71.4 dB(A) ± 3dB(A) |
| DRIVE MOTOR POWER | 250W | VIBRATION LEVEL | HAV 0.57 m/s ² HAV 1.87 ft/s ² |
| DRIVE SPEED | 0-4 kph 0-2.25 mph | TGB6055T (TGB1620T) | |
| WATER INGRESS PROTECTION | IPX4 | | |



Numatic INTERNATIONAL LTD
MILLFIELD ROAD, CHARD, SOMERSET ENGLAND
TA20 2GB

THE EXAMPLE SHOWN DETAILS THE METHOD USED FOR IDENTIFYING CRITICAL (INSPECTION) DIMENSIONS WHERE APPLICABLE

TOLERANCES:- LINEAR: 0 DECIMAL PLACES = +/- 1.0mm
1 DECIMAL PLACE = +/- 0.25mm
2 DECIMAL PLACES = +/- 0.05mm
ANGULAR:- +/- 0.5 DEGREE

All components must be ROHS compliant.

| | | | | | | | | | | | |
|--------------------------|--|-------------------------------|--|-----------|---------|------------------|----------------|---------|---|------------|------------------|
| A06 NEW DRAWING | | Internal Code: PRO | | DRAWN: PB | APPD: - | DATE: 21/02/2017 | TOOL NUMBER: - | WEIGHT: | DIMENSIONS IN MILLIMETERS: NOT TO SCALE | MATERIAL:- | ITEM No(s):- N/A |
| REVISION: CHANGE DETAIL: | | ST_Numatic_A3.sldprt 20030224 | | 1 | 3 | 4 | 5 | 6 | DRG No:- DRW-23465 | | |

THIS DRAWING IS COPYRIGHT AND IS THE PROPERTY OF NUMATIC INTERNATIONAL LTD. AND MUST NOT BE USED WITHOUT THEIR KNOWLEDGE NOR COMMUNICATED TO ANY PERSON OR COMPANY.

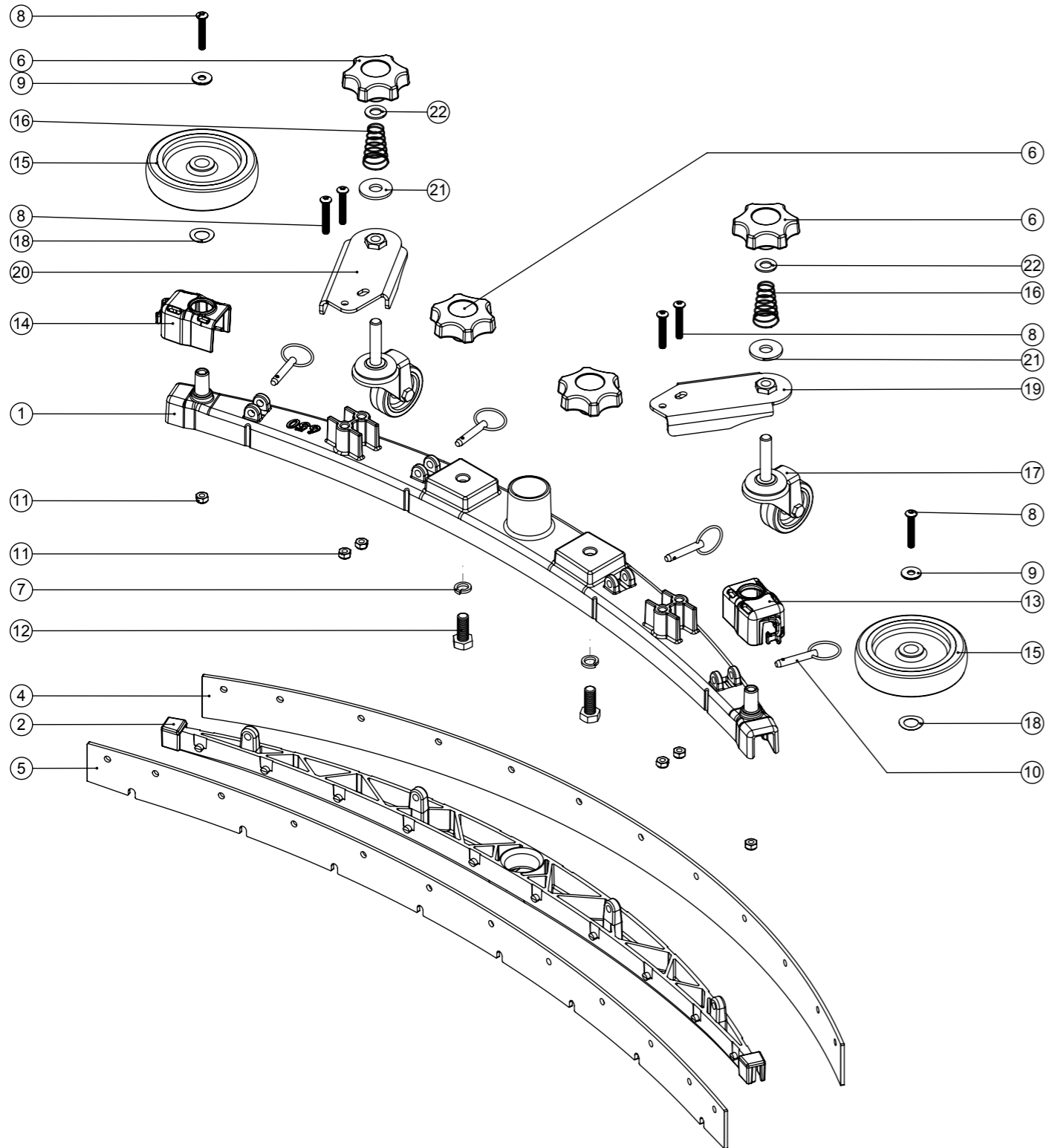
PRINT SIZE
A3

Numatic International Spare Parts

Model No: 650 TWINTEC ALUMINIUM FLOOR TOOL (38MM HOSE, RED TRIM, SERILOR BLADES)

Internal Code: 903347
 DRAWING: DRW-22621 ISS:A05
 MS5 24/10/2016

NB: FOR WIRING SEE DRAWING: N/A



Numatic International Spare Parts

Model No: 650 TWINTEC ALUMINIUM FLOOR TOOL (38MM HOSE, RED TRIM, SERILOR BLADES)

Provisional

| ITEM: | PART No: | Description | Qty |
|-------|----------|---|-----|
| 1 | 208198 | (650MM SCRUB WIDTH) ALUMINIUM SQUEEGEE CASTING (38MM HOSE FITTING) | 1 |
| 2 | 903345 | (650MM SCRUB WIDTH) RED BLADE HOLDER MOULDING (SLOPING PROFILE) (32MM & 38MM HOSE FITTING) | 1 |
| | 900518 | 650 REPLACEMENT SERILOR GREEN POLYURETHANE BLADES SET | |
| 4 | 208970 | (650MM SCRUB WIDTH) REPLACEMENT (4.0MM / 35-45-35 SHORE A) REAR LAMINATED SERILOR POLY/BLADE (847MM LONG) | 1 |
| 5 | 208967 | (650MM SCRUB WIDTH) REPLACEMENT (3.2MM / 40 SHORE A) FRONT MONOLAYER SERILOR POLY/BLADE (819MM LONG) | 1 |
| 6 | 903281 | M10 LOBE KNOB (RED) | 4 |
| 7 | 219899 | M10 SINGLE COIL STAINLESS STEEL WASHER | 2 |
| 8 | 219933 | M6 X 35MM SOCKET BUTTON HEAD BOLT STAINLESS STEEL | 6 |
| 9 | 219647 | M6 FORM G STAINLESS STEEL WASHER | 2 |
| 10 | 206953 | DETENT PINS | 4 |
| 11 | 219642 | M6 STAINLESS STEEL NYLON INSERT NUT | 6 |
| 12 | 219909 | M10 X 25MM LONG HEXAGONAL STAINLESS STEEL SCREW | 2 |
| 13 | 237322 | RIGHT HAND FLOOR TOOL CLIP MOULDING | 1 |
| 14 | 237323 | LEFT HAND FLOOR TOOL CLIP MOULDING | 1 |
| 15 | 208796 | 4 INCH WHEEL | 2 |
| 16 | 229175 | CONICAL SPRING | 2 |
| 17 | 208497 | 50MM DIAMETER GREY TPR TYRED SWIVEL CASTORS C/W M10 X 45 SWAGED STEM. | 2 |
| 18 | 219891 | 13MM WAVEY WASHER | 2 |
| 19 | 304523 | ADJUSTABLE FLOOR TOOL CASTOR PLATE RHS WELD ASSY | 1 |
| 20 | 304522 | ADJUSTABLE FLOOR TOOL CASTOR PLATE LHS WELD ASSY | 1 |
| 21 | 291124 | M10 PENNY WASHER STAINLESS STEEL | 2 |
| 22 | 219903 | M10 FORM A STAINLESS STEEL WASHER | 2 |

Numatic International Spare Parts

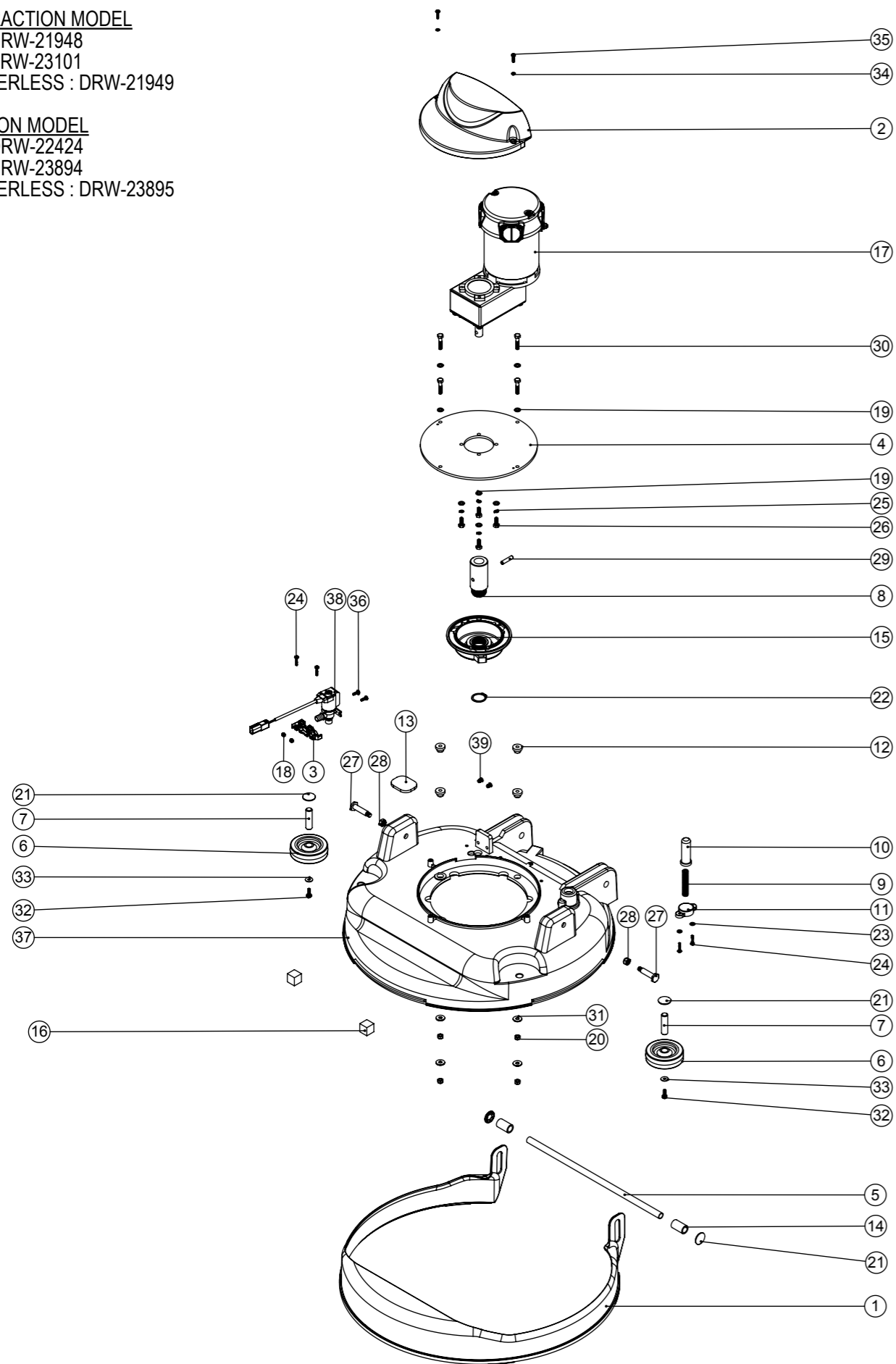
Model No: TGB6055 EXPLODED VIEW : BRUSH DECK

Internal Code: -
 PRO DRAWING: DRW-21591 ISS:A11
 21/02/2017

NB: FOR WIRING SEE DRAWING:

NON-TRACTION MODEL
 230V : DRW-21948
 120V : DRW-23101
 CHARGERLESS : DRW-21949

TRACTION MODEL
 230V : DRW-22424
 120V : DRW-23894
 CHARGERLESS : DRW-23895



Numatic International Spare Parts

Model No: TGB6055 EXPLODED VIEW : BRUSH DECK

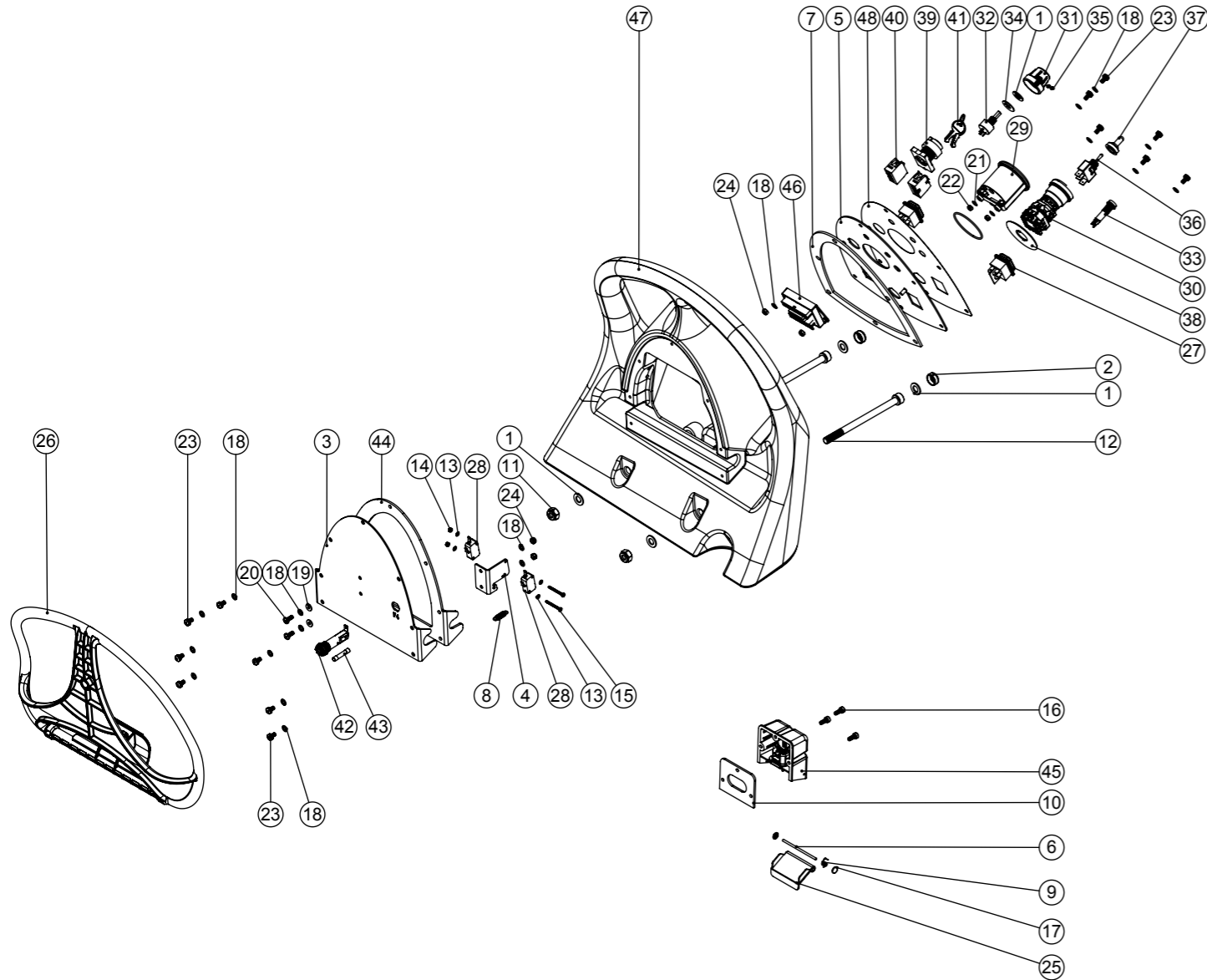
| ITEM: | PART No: | Description | Comments | QTY |
|-------|----------|---|-----------------------------|-----|
| 1 | 229562 | SPLASH SKIRT MOULDING | | 1 |
| 2 | 237380 | AMER MOTOR COVER | | 1 |
| 3 | 902556 | SOLENOID MOUNT MOULDING | | 1 |
| 4 | 404166 | TTB4045/4055 AMER MOTOR ADAPTOR PLATE PAINT SILVER GREY | | 1 |
| 5 | 391439 | 1/2 INCH DIAMETER X 18G STAINLESS STEEL TUBE (0.375) | | 1 |
| 6 | 204068 | 3 INCH GREY WHEEL | | 2 |
| 7 | 206013 | BUFFER WHEEL PIN | | 2 |
| 8 | 208727 | DRIVE SHAFT | | 1 |
| 9 | 219692 | COMPRESSION SPRING | | 1 |
| 10 | 229128 | PLUNGER | | 1 |
| 11 | 223242 | PLUNGER MOUNTING PLATE MOULDING | | 1 |
| 12 | 229285 | MOTOR MOUNTING SPACER | | 4 |
| 13 | 202098 | FOOT PEDAL PAD | | 1 |
| 14 | 208769 | NATUARL NYLON SPACER (12.8x18x30) | | 2 |
| 15 | 230285 | MODIFIED CHUCK (CRO) | | 1 |
| 16 | 902352 | FOAM SPACER 20MM | | 2 |
| 17 | 205245 | AMER 100RPM MOTOR | 230222 CARBON BRUSHES (SET) | 1 |
| 18 | 219687 | M4 STAINLESS STEEL NYLON INSERT NUT | | 2 |
| 19 | 219870 | M6 FORM A WASHER STAINLESS STEEL | | 8 |
| 20 | 219642 | M6 STAINLESS STEEL NYLON INSERT NUT | | 4 |
| 21 | 204021 | 12.7MM STAINLESS STEEL HUB CAP | | 4 |
| 22 | 230048 | 26MM EXTERNAL CIRCLIP | | 1 |
| 23 | 219355 | M5 FORM A STAINLESS STEEL WASHER | | 2 |
| 24 | 219568 | NO8.3/4 INCH LG.POZI-PAN.SCREW.STAINLESS STEEL.PLASTITE | | 4 |
| 25 | 219718 | WASHER.M6.SPRING.STAINLESS STEEL | | 4 |
| 26 | 219719 | M6 X 16MM LONG HEXAGONAL STAINLESS STEEL HEAD BOLT | | 4 |
| 27 | 206236 | PIVOT PIN | | 2 |
| 28 | 219857 | M8 NYLON INSERT HALF NUT | | 2 |
| 29 | 291079 | 6MM X 30MM STAINLESS STEEL ROLL PIN | | 1 |
| 30 | 291022 | M6 X 30MM LONG STAINLESS STEEL HEXAGONAL HEAD BOLT | | 4 |
| 31 | 219647 | M6 FORM G STAINLESS STEEL WASHER | | 4 |
| 32 | 291132 | M5 X 16MM LONG STAINLESS STEEL POZI PAN SEMS SCREW | | 2 |
| 33 | 219644 | M5 FORM G STAINLESS STEEL WASHER | | 2 |
| 34 | 291145 | M4 SHAKEPROOF WASHER STAINLESS STEEL | | 2 |
| 35 | 219862 | M4 X 16MM LONG POZI PAN STAINLESS STEEL SCREW | | 2 |
| 36 | 219890 | M4 X 12MM LONG POZI PAN STAINLESS STEEL SCREW | | 2 |
| 37 | 304445 | 6055 BASE MOULDING | | 1 |
| 38 | 902949 | TERMINATED SOLONOID CABLE.BLACK.125.0M5.2.24 | | 1 |
| 39 | 219009 | M4 BRASS TAPPEX INSERT | | 2 |

Numatic International Spare Parts

Model No: TGB6055T EXPLODED VIEW : HANDLE

NB: FOR WIRING SEE DRAWING:
230V : DRW-22424
120V : DRW-23894

Internal Code: -
DRAWING: DRW-21957 ISS:A06
PRO 21/02/2017



Numatic International Spare Parts

Model No: TGB6055T EXPLODED VIEW : HANDLE

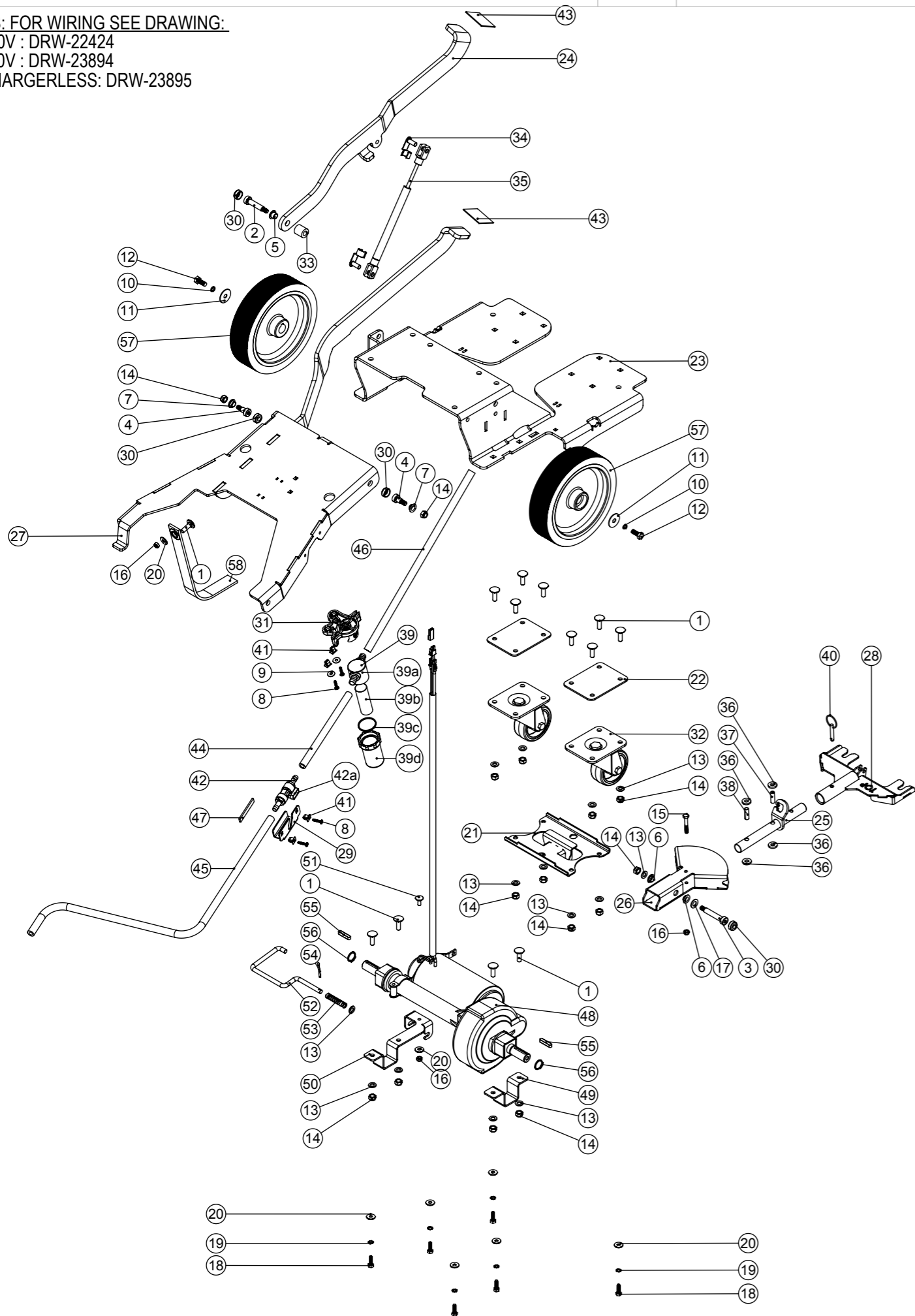
| ITEM: | PART No: | DESCRIPTION | COMMENTS: | QTY. |
|-------|----------|--|-----------------|------|
| 1 | 219903 | M10 FORM A STAINLESS STEEL WASHER | | 5 |
| 2 | 237632 | SHOULDER BOLT COVER | | 2 |
| 3 | 902263 | HANDLE BACK PLATE ETB6055 PAINTED SILVER | | 1 |
| 4 | 902251 | HANDLE MICRO SWITCH BRACKET PAINTED SILVER | | 1 |
| 5 | 903514 | TGB6055T CONTROL PANEL PLATE ASSEMBLY PAINTED SILVER | | 1 |
| 6 | 390979 | 72MM LONG X 3MM DIAMETER STAINLESS STEEL BAR | | 1 |
| 7 | 208336 | CONTROL PANEL PUNCHED GASKET | | 1 |
| 8 | 208356 | TRIGGER SPRING | | 1 |
| 9 | 219819 | TORSION SPRING | | 1 |
| 10 | 202105 | SOCKET COVER SEALING GASKET | | 1 |
| 11 | 219897 | M10 STAINLESS STEEL NYLON INSERT NUT | | 2 |
| 12 | 902351 | M10 X 150MM LONG SOCKET CAP SCREW STAINLESS STEEL | | 2 |
| 13 | 219501 | M3 FORM A STAINLESS STEEL WASHER | | 4 |
| 14 | 291154 | M3 NYLON INSERT NUT STAINLESS STEEL | | 2 |
| 15 | 291156 | M3 X 30MM LONG POZI PAN SCREW STAINLESS STEEL | | 2 |
| 16 | 291007 | M5 X 12MM LONG STAINLESS STEEL SOCKET CAP SCREW | | 3 |
| 17 | 219832 | 3MM DIAMETER STARLOCK | | 2 |
| 18 | 219355 | M5 FORM A STAINLESS STEEL WASHER | | 19 |
| 19 | 219462 | RUBBER WASHER | | 2 |
| 20 | 219740 | M5 X 12MM LONG STAINLESS STEEL POZI PAN SCREW | | 2 |
| 21 | 219688 | M4 FORM A STAINLESS STEEL WASHER | | 2 |
| 22 | 219687 | M4 STAINLESS STEEL NYLON INSERT NUT | | 2 |
| 23 | 291135 | M5 X 10MM LONG STAINLESS STEEL POZI PAN SEMS SCREW | | 13 |
| 24 | 219633 | M5 STAINLESS STEEL NYLON INSERT NUT | | 4 |
| 25 | 227781 | FLAP MOULDING | | 1 |
| 26 | 902325 | RED HANDLE TRIGGER MOULDING | | 1 |
| 27 | 902235 | SWITCH DPST RED ILLUMINATED WITH MEMBRANE 24V | | 2 |
| 28 | 208391 | SNAP ACTION SWITCH | | 2 |
| 29 | 902532 | BATTERY DISCHARGE INDICATOR + HOUR METER 24V | O-RING INCLUDED | 1 |
| 30 | 904087 | EMERGENCY STOP (A02ES-H) | | 1 |
| 31 | 903498 | SPEED ADJUSTMENT KNOB C/W INSERT (RED) | | 1 |
| 32 | 270316 | POTENTIOMETER TYPE Pe30 22k OHMS 20% 3W (WITH PANEL SEAL) (ROUND SHAFT WITH FLAT / NO SLOT IN SHAFT END) | | 1 |
| 33 | 270291 | GREEN LED INDICATOR 2V C/W 2.2K RESISTOR | | 1 |
| 34 | 904094 | SPEED CONTROL GASKET | | 1 |
| 35 | 219744 | M4 X 6MM LONG BLACKODISED GRUB SCREW | | 2 |
| 36 | 206786 | SWITCH | | 1 |
| 37 | 206785 | SWITCH COVER C/W NUT | | 1 |
| 38 | 904086 | EMERGENCY NAME PLATE (A02-U27Y) | | 1 |
| 39 | 208138 | KEY SWITCH (2 POSITION) | | 1 |
| 40 | 208137 | KEY SWITCH ACTUATOR BLOCK | | 2 |
| 41 | 208167 | SPARE SET OF KEYS (2 KEYS) | SPARE ITEM | 1 |
| 42 | 903032 | BULGIN PANEL MOUNT FUSEHOLDER | | 1 |
| 43 | 903066 | FUSE 2.5A (6.3x32) | | 1 |
| 44 | 903062 | HANDLE BACK PLATE GASKET | | 1 |
| 45 | 904030 | 240V EMI FILTER WITH SOCKET COVER ASSEMBLY (PROCESSED) | 240V VERSION | 1 |
| | 904031 | 120V EMI FILTER WITH SOCKET COVER ASSEMBLY (PROCESSED) | 120V VERSION | 1 |
| 46 | 904179 | Terminal Block Assembly | | 1 |
| 47 | 304442 | PROCESSED TTV5565 GREY HANDLE MOULDING | | 1 |
| 48 | 904766 | TGB6055T (TGB1620T) CONTROL PANEL OVERLAY | | 1 |

Numatic International Spare Parts

Model No: TGB6055T EXPLODED VIEW : CHASSIS

Internal Code: N/A
MS4 DRAWING: DRW-21956 ISS:A09

NB: FOR WIRING SEE DRAWING:
230V : DRW-22424
120V : DRW-23894
CHARGERLESS: DRW-23895



Numatic International Spare Parts

Model No: TGB6055T EXPLODED VIEW : CHASSIS

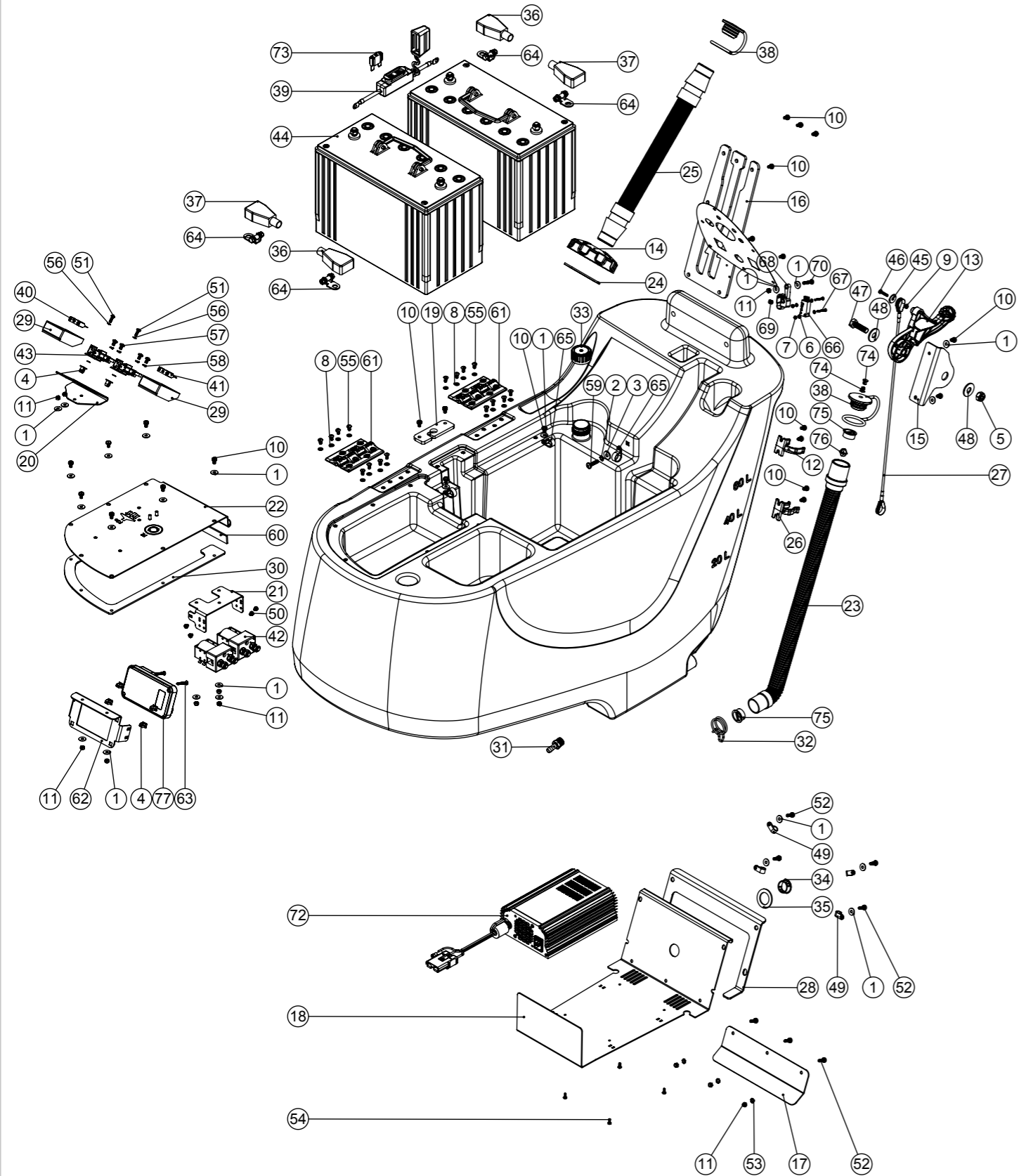
| ITEM: | PART No: | DESCRIPTION | COMMENTS: | QTY. |
|-------|----------|--|----------------------|------|
| 1 | 902010 | M8 X 25 COACH BOLT S/S | | 13 |
| 2 | 208355 | M8 X 10 X 40MM LONG HEX SOCKET SHOULDER BOLT | | 1 |
| 3 | 208333 | M8 X 10 X 50MM LONG HEX SOCKET SHOULDER BOLT | | 1 |
| 4 | 208313 | M8 X 10 X 12MM LONG HEX SOCKET SHOULDER BOLT | | 2 |
| 5 | 208331 | IGUS BEARING (GFM 101209) | | 1 |
| 6 | 208312 | IGUS BEARING (GFM 101205) | | 2 |
| 7 | 208330 | IGUS BEARING (GFM 101206) | | 2 |
| 8 | 219568 | NO8.3/4 INCH LG.POZI-PAN.SCREW.STAINLESS STEEL.PLASTITE | | 4 |
| 9 | 219644 | M5 FORM G STAINLESS STEEL WASHER | | 2 |
| 10 | 219898 | M8 SINGLE COIL STAINLESS STEEL WASHER | | 2 |
| 11 | 219877 | M8 X 30 STAINLESS STEEL WASHER | | 2 |
| 12 | 219717 | M8 X 20MM LONG HEXAGONAL STAINLESS STEEL BOLT | | 2 |
| 13 | 219578 | M8 FORM A STAINLESS STEEL WASHER | | 14 |
| 14 | 219639 | M8 STAINLESS STEEL NYLON INSERT NUT | | 15 |
| 15 | 291125 | M6 X 40 LONG HEX BOLT STAINLESS STEEL | | 1 |
| 16 | 219642 | M6 STAINLESS STEEL NYLON INSERT NUT | | 3 |
| 17 | 219903 | M10 FORM A STAINLESS STEEL WASHER | | 1 |
| 18 | 219976 | M6 X 20MM LONG HEXANGONAL HEAD SET SCREW | | 6 |
| 19 | 902353 | M6 EXTERNAL SHAKEPROOF WASHER STAINLESS STEEL | | 6 |
| 20 | 219647 | M6 FORM G STAINLESS STEEL WASHER | | 8 |
| 21 | 904960 | FLOOR TOOL LIFTING PIVOT BRACKET WELD ASSY PAINTED SILVER | | 1 |
| 22 | 329581 | CASTOR ADAPTOR SPACER | | 2 |
| 23 | 904074 | TGB6055 TRACTION CHASSIS PAINTED SILVER | | 1 |
| 24 | 404131 | TTV4555 EXTRA LOAD PEDAL Z/PL | | 1 |
| 25 | 905730 | TGB6055 FLOOR TOOL PIVOT TUBE ASSEMBLY | | 1 |
| 26 | 905728 | FLOOR TOOL LIFTING PLATE WELD ASSEMBLY (3MM M/S) Z/PL | | 1 |
| 27 | 902268 | ETB6055 DECK LIFTING LINK Z/PL | | 1 |
| 28 | 304466 | FLOOR TOOL BRACKET ASSEMBLY (TT/TTB4045/4055) | | 1 |
| 29 | 902262 | TAP BRACKET PAINTED SILVER | | 1 |
| 30 | 237632 | SHOULDER BOLT COVER | | 4 |
| 31 | 901006 | FILTER MOUNTING BRACKET | | 1 |
| 32 | 204116 | HEAVY DUTY CASTOR. BLUE TYRE | | 2 |
| 33 | 208350 | NYLON SPACER I/D 10.2MM X O/D 20.0MM X LENGTH 21.0MM | | 1 |
| 34 | 208634 | GAS RAM CLEVIS CLIP | | 2 |
| 35 | 208623 | 280N GAS RAM | | 1 |
| 36 | 206964 | SLIDE NYLON SPACER | | 4 |
| 37 | 206963 | VERTICAL NYLON SPACER | | 1 |
| 38 | 206954 | SPIRO SPACER | | 1 |
| 39 | 208888 | EXTENDED STRAINER | | 1 |
| 39a | 208827 | STRAINER BLACK TOP | SPARE PART | 1 |
| 39b | 208889 | EXTENDED STRAINER 50 MESH SCREEN | SPARE PART | 1 |
| 39c | 208830 | STRAINER GASKET | SPARE PART | 1 |
| 39d | 208890 | EXTENDED STRAINER CLEAR BOWL | SPARE PART | 1 |
| 40 | 206953 | DETENT PINS | | 1 |
| 41 | 900986 | NYLON GROMMET NUT (PLASTIC INSERT TO SUIT No 8 PLASTITE SCREW) | | 4 |
| 42 | 208761 | 10MM HOSE TAIL TO 10MM HOSE TAIL BALL VALVE ASSEMBLY | | 1 |
| 42a | 901544 | TAP HANDLE C/W COVER AND M3X6MM SCREW (SPARE ITEM) | SPARE PART | 1 |
| 43 | 903064 | FOOT PEDAL PAD (RED) | 903063 CUT TO LENGHT | 2 |
| 44 | 303713 | SILICONE TUBE (210MM LONG) | | 1 |
| 45 | 391216 | SILICON TUBE 8MM I/D X 3.2MM WALL SECTION (CUT 600MM) | | 1 |
| 46 | 304443 | SILICON TUBE 8MM I/D X 3.2MM WALL SECTION (CUT 420MM) | | 1 |
| 47 | 902760 | 3MM THICK X 9MM WIDE INSEAL (212052 x 60MM LONG) | | 1 |
| 48 | 321700 | 465MM LONG ASI TRANSAXLE C/W SHORTNED 850MM WIRES | | 1 |
| 49 | 329497 | TRANSAXLE MOUNTING BRACKET | | 1 |
| 50 | 392217 | TTV4555 BRAKE LEVER AND AXLE CLAMP | | 1 |
| 51 | 291103 | M6 X 16 COACH BOLT S/S | | 1 |
| 52 | 304370 | TTV4555 BRAKE LEVER | | 1 |
| 53 | 219326 | 50MM LONG COMPRESSION SPRING | | 1 |
| 54 | 219171 | 3.2MM X 28MM SPLIT COTTER PIN | | 1 |
| 55 | 206744 | 6MM X 6MM X 32MM FEATHER KEY | | 2 |
| 56 | 219889 | 19MM HEAVY DUTY CIRCLIP | | 2 |
| 57 | 204115 | 200MM X 50MM TRACTION WHEEL - GREY PU TREAD COMBED PROFILE | | 2 |
| 58 | 903323 | ANTI-STATIC STRAP (CUT TO LENGHT: 320MM LONG) | | 1 |

Numatic International Spare Parts

Model No: TGB6055T EXPLODED VIEW : BOTTOM TANK

Internal Code: -
DRAWING: DRW-21958 ISS:A06
PRO 21/02/2017

NB: FOR WIRING SEE DRAWING:
230V DRW-22424
120V DRW-23894



Numatic International Spare Parts

Model No: TGB6055T EXPLODED VIEW : BOTTOM TANK

| ITEM: | PART No: | DESCRIPTION | COMMENTS: | QTY. |
|-------|----------|--|-------------------------|------|
| 1 | 219644 | M5 FORM G STAINLESS STEEL WASHER | | 24 |
| 2 | 902353 | M6 EXTERNAL SHAKEPROOF WASHER STAINLESS STEEL | | 1 |
| 3 | 219647 | M6 FORM G STAINLESS STEEL WASHER | | 1 |
| 4 | 900986 | NYLON GROMMET NUT (PLASTIC INSERT TO SUIT No 8 PLASTITE SCREW) | | 6 |
| 5 | 219897 | M10 STAINLESS STEEL NYLON INSERT NUT | | 1 |
| 6 | 219501 | M3 FORM A STAINLESS STEEL WASHER | | 4 |
| 7 | 291154 | M3 NYLON INSERT NUT STAINLESS STEEL | | 2 |
| 8 | 219355 | M5 FORM A STAINLESS STEEL WASHER | | 16 |
| 9 | 219687 | M4 STAINLESS STEEL NYLON INSERT NUT | | 1 |
| 10 | 291135 | M5 X 10MM LONG STAINLESS STEEL POZI PAN SEMS SCREW | | 23 |
| 11 | 219633 | M5 STAINLESS STEEL NYLON INSERT NUT | | 11 |
| 12 | 237754 | 35-38MM HOSE CLIP | | 1 |
| 13 | 902324 | RED SQUEEGEE LIFT HANDLE | | 1 |
| 14 | 237174 | FILLER CAP WITH FILLER HOSE HOLE | | 1 |
| 15 | 903270 | FLOOR TOOL HANDLE BRACKET Z/PL | | 1 |
| 16 | 404142 | TTV4555 FOOT PEDAL GUIDE PLATE - Z/PL | | 1 |
| 17 | 902257 | CHARGER SPLASH SKIRT PAINTED SILVER | | 1 |
| 18 | 902258 | ETB6055 NORD CHARGER PLATE PAINTED SILVER | | 1 |
| 19 | 902238 | RETAINING PLATE | | 1 |
| 20 | 902254 | FUSE BRACKET PAINTED SILVER | | 1 |
| 21 | 902253 | CONTACTOR BRACKET PAINTED SILVER | | 1 |
| 22 | 902269 | ELECTRONICS PLATE ASSY PAINTED SILVER | | 1 |
| 23 | 213025 | DUMP HOSE | | 1 |
| 24 | 208564 | FILLER CAP SEALING RING | | 1 |
| 25 | 206842 | 420MM LONG BLACK STRETCH HOSE C/W CUFFS | | 1 |
| 26 | 901916 | 28mm HOSE CLIP | | 1 |
| 27 | 208996 | LIFTING WIRE TTV4555 / TTB6055 | | 1 |
| 28 | 208337 | CHARGER PLATE PUNCHED GASKET | | 1 |
| 29 | 208802 | MAXI-FUSE HOLDER COVER | | 2 |
| 30 | 902066 | PUMP PLATE GASKET (4555/6055) | | 1 |
| 31 | 219389 | 3/8 BSPP MALE C/W UNDERCUT & O RING TO 10.5MM HOSETAIL | | 1 |
| 32 | 902133 | SPRING WIRE CLAMP (YDNAC-Y8010356) | | 1 |
| 33 | 208106 | BOTTLE CAP | | 1 |
| 34 | 206314 | WINDOW PLUG | | 1 |
| 35 | 902328 | WINDOW PLUG GASKET | | 1 |
| 36 | 208936 | BLACK BATTERY TERMINAL COVER (415N8V14) | | 2 |
| 37 | 208935 | RED BATTERY TERMINAL COVER (415N8V02) | | 2 |
| 38 | 903341 | 32MM HOSE CAP RED (C/W 8MM HOLE) | | 2 |
| 39 | 903175 | WATERPROOF BATTERY FUSE HOLDER.210.RING.RING | | 1 |
| 40 | 221091 | 20 AMP MAXI FUSE | | 1 |
| 41 | 230104 | 30 AMP MAXI FUSE | | 1 |
| 42 | 230111 | CONTACTOR | | 2 |
| 43 | 230102 | FUSE HOLDER RATED AT 60 AMPS | | 2 |
| 44 | 230138 | 98 A/H STUD TERMINAL GEL TYPE BATTERY | 100Ah SPARE PART 205112 | 2 |
| | 220867 | 12V TRACTION BLOCK BATTERY | 80Ah VERSION | 2 |
| 45 | 291118 | M5 STAINLESS STEEL WASHER 19MM OD | | 1 |
| 46 | 219686 | M4 X 20MM LONG STAINLESS STEEL POZI PAN MACHINE SCREW | | 1 |
| 47 | 219895 | M10 X 35MM LONG HEXAGONAL STAINLESS STEEL SCREW | | 1 |
| 48 | 291124 | M10 PENNY WASHER STAINLESS STEEL | | 2 |
| 49 | 219393 | P CLIP | | 4 |
| 50 | 219566 | M4 X 6MM LONG POZI PAN SCREW | | 4 |
| 51 | 219569 | NO8. 1/2 INCH. LG.POZI-PAN.SCREW.STAINLESS STEEL.PLASTITE | | 2 |
| 52 | 291132 | M5 X 16MM LONG STAINLESS STEEL POZI PAN SEMS SCREW | | 7 |
| 53 | 291020 | M5 STAINLESS STEEL EXTERNAL SHAKEPROOF LOCK WASHER | | 3 |
| 54 | 902533 | No6 X 3/8 INCH LONG POZI PAN SELF TAP SCREW STAINLESS STEEL | | 4 |
| 55 | 291004 | M5 X 10MM LONG STAINLESS STEEL BUTTON HEAD SCREW | | 16 |
| 56 | 291145 | M4 SHAKEPROOF WASHER STAINLESS STEEL | | 4 |
| 57 | 219864 | M5 X 8MM LONG POZI-PAN SCREW Z/PL | | 4 |
| 58 | 219861 | M5 SINGLE COIL STAINLESS STEEL WASHER | | 4 |
| 59 | 902232 | M6 X 25MM LONG POZI PAN SCREW STAINLESS STEEL | | 1 |
| 60 | 902387 | 3MM X 19MM INSEAL TYPE 3259 (190MM) | | 1 |
| 61 | 303954 | PLASTIC HINGE ASSEMBLY | | 2 |
| 62 | 904096 | MOTOR CONTROLLER BRACKET PAINTED SILVER | | 1 |
| 63 | 219826 | NO8 X 1 1/4 INCH LONG POZI DRIVE COUNTERSUNK HEAD SCREW | | 2 |
| 64 | 902666 | BATTERY CONNECTOR (M6 - M10) | 100Ah VERSION | 4 |
| | 220455 | BATTERY TERMINAL NEGATIVE (-) | 80Ah VERSION | 2 |
| | 220454 | BATTERY TERMINAL POSITIVE (+) | 80Ah VERSION | 2 |
| 65 | 219514 | P-CLIP | | 3 |
| 66 | 208748 | IP RATED MICROSWITCH WITH TOGGLE | | 1 |
| 67 | 904052 | M3 X 25MM LONG POZI PAN SCREW STAINLESS STEEL | | 2 |
| 68 | 227587 | CENTRE SWITCH OPERATING LEVER MOULDING | | 1 |
| 69 | 219804 | SWITCH COMPRESSION SPRING | | 1 |
| 70 | 219575 | M5 X 25MM LONG POZI PAN STAINLESS STEEL SCREW | | 1 |
| 71 | 902159 | ETB6055 GREY BOTTOM TANK MOULDING | WITH LOGO | 1 |
| | 902160 | ETB6055 GREY BOTTOM TANK MOULDING (EP) | WITHOUT LOGO | 1 |
| 72 | 902988 | 230V/24V/10 AMP HF NORD CHARGER (PROCESSED 185MM LONG WIRING) | 230V VERSION | 1 |
| | 903735 | 120V/24V/10 AMP HF NORD CHARGER (PROCESSED 185MM LONG WIRING) | 120V VERSION | 1 |
| 73 | 221107 | 50 AMP MAXI FUSE (RED) | | 1 |
| 74 | 904403 | BARBED RIVET BLACK | | 2 |
| 75 | 904108 | FLOAT STOP MOULDING | | 2 |
| 76 | 904109 | FLOAT MOULDING | | 1 |
| 77 | 904459 | PROGRAMMED 70A MOTOR CONTROLLER (TGB) | | 1 |
| 78 | 904766 | TGB6055T (TGB1620T) CONTROL PANEL OVERLAY | | 1 |

Numatic International Spare Parts

Model No: TGB6055 EXPLODED VIEW : TOP TANK

Internal Code: -
 PP DRAWING: DRW-21584 ISS:A15
 24/10/2016

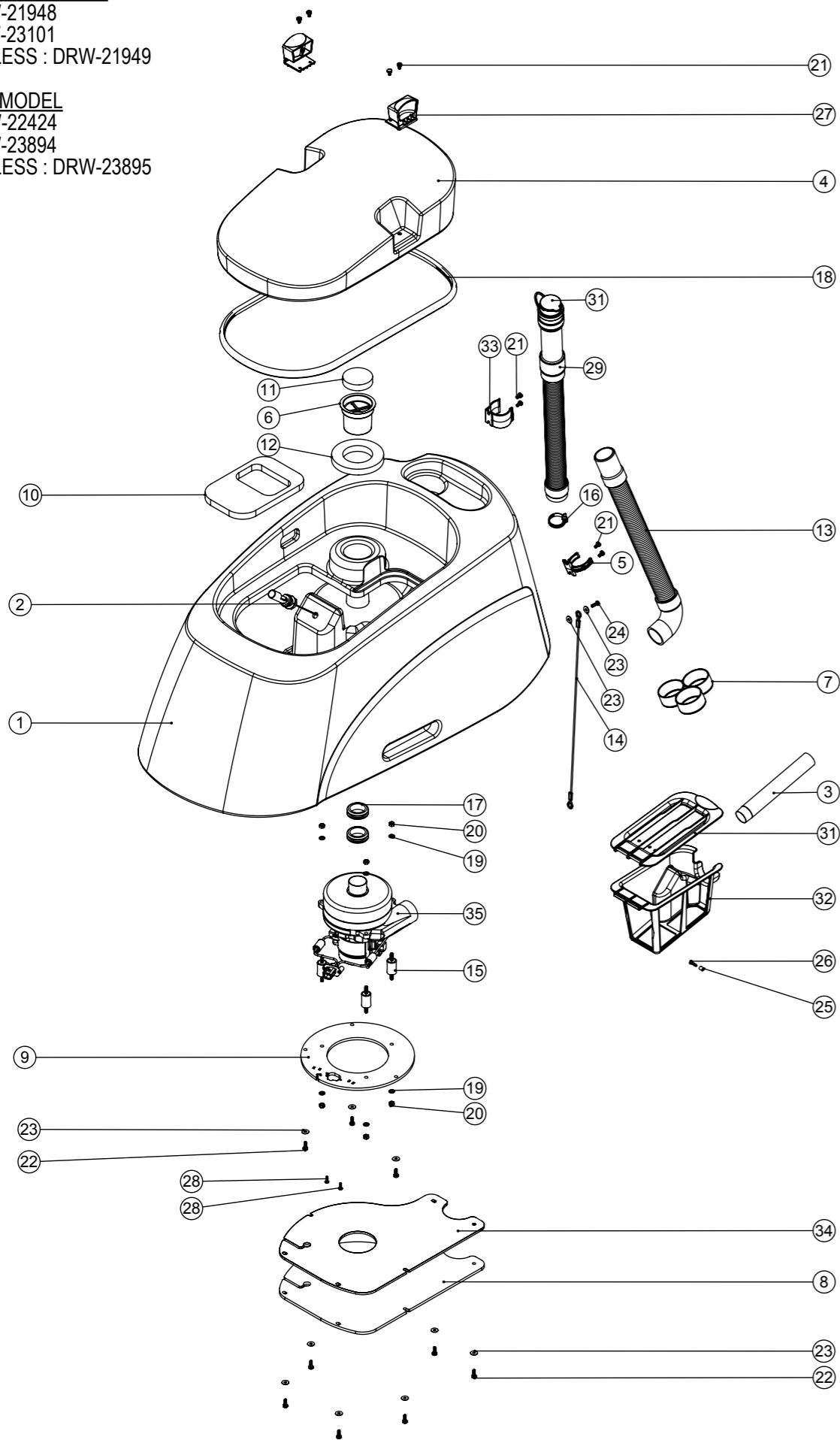
NB: FOR WIRING SEE DRAWING:

NON-TRACTION MODEL

230V : DRW-21948
 120V : DRW-23101
 CHARGERLESS : DRW-21949

TRACTION MODEL

230V : DRW-22424
 120V : DRW-23894
 CHARGERLESS : DRW-23895



Numatic International Spare Parts

Model No: TGB6055 EXPLODED VIEW : TOP TANK

| ITEM: | PART No: | Description | Comments | QTY |
|-------|----------|--|----------------------|-----|
| 1 | 902295 | TTV4555/TTB6055 GREY TOP TANK MOULDING C/W FLOAT SWITCH & TUBE | | 1 |
| 2 | 902234 | FLOAT SWITCH (N.C.) | 903038 SPARE END TIP | 1 |
| 3 | 304386 | PROCESSED ALUMINIUM WELDED TUBE CUT TO LENGTH (210MM)C6 | | 1 |
| 4 | 902323 | TTV4555 GREY SEPERATOR HOOD MOULDING | | 1 |
| 5 | 237754 | 35-38MM HOSE CLIP | | 1 |
| 6 | 237688 | FOAM FILTER BODY | | 1 |
| 7 | 237718 | HOSE GUIDE | | 1 |
| 8 | 902237 | VAC MOTOR BOTTOM PLATE (2 STAGE) | | 1 |
| 9 | 902236 | TANGENTIAL VAC MOTOR BRACKET (PP) | | 1 |
| 10 | 208950 | FLOAT PAD | | 1 |
| 11 | 208947 | INNER FOAM FILTER/OUTER FOAM FILTER | | 1 |
| 12 | 208947 | INNER FOAM FILTER/OUTER FOAM FILTER | | 1 |
| 13 | 280021 | 35MM X 1000MM LONG 3:1 STRETCH HOSE (SHORT & LONG CUFF) | | 1 |
| 14 | 208204 | 495MM LONG LIFTING LINK WIRE | | 1 |
| 15 | 208334 | 30MM x 20MM ANTI VIBRATION MOUNT | | 3 |
| 16 | 206209 | A.B.A HOSE CLIP | | 1 |
| 17 | 208144 | 38MM GROMMET X 6MM PANEL THICKNESS | | 2 |
| 18 | 391433 | TTV4555 SEPARATOR SEALING GASKET CUT TO LENGTH | | 1 |
| 19 | 219870 | M6 FORM A WASHER STAINLESS STEEL | | 6 |
| 20 | 219642 | M6 STAINLESS STEEL NYLON INSERT NUT | | 6 |
| 21 | 291135 | M5 X 10MM LONG STAINLESS STEEL POZI PAN SEMS SCREW | | 8 |
| 22 | 291132 | M5 X 16MM LONG STAINLESS STEEL POZI PAN SEMS SCREW | | 9 |
| 23 | 219644 | M5 FORM G STAINLESS STEEL WASHER | | 11 |
| 24 | 219547 | M5 X 16MM LONG POZI PAN STAINLESS STEEL SCREW | | 1 |
| 25 | 219508 | SPIROL SPACER | | 1 |
| 26 | 299021 | No8 X 3/4 INCH LONG SELF TAP POZI PAN SCREW | | 1 |
| 27 | 902919 | CLIP MOULDING (RED) | | 2 |
| 28 | 219569 | NO8.1/2 INCH. LG.POZI-PAN.SCREW.STAINLESS STEEL.PLASTITE | | 2 |
| 29 | 901548 | 35MM X 250MM STRETCH HOSE (3:1) C/W ADJUSTABLE CUFF + CAP | | 1 |
| 30 | 900903 | HOSE CLOSURE REPLACEMENT KIT (35MM-38MM STRETCH HOSE) | SPARE PART | 1 |
| 31 | 903285 | FILTER BASKET LID (RED) | | 1 |
| 32 | 903283 | FILTER BASKET (RED) | | 1 |
| 33 | 237382 | ACETAL HOSE CLIP MOULDING | | 1 |
| 34 | 903628 | VAC MOTOR BOTTOM PLATE LINER | | 1 |
| 35 | 903716 | 24V TANGENTIAL DISCHARGE 2-STAGE VAC MOTOR & PLUG ASSEMBLY | | 1 |

