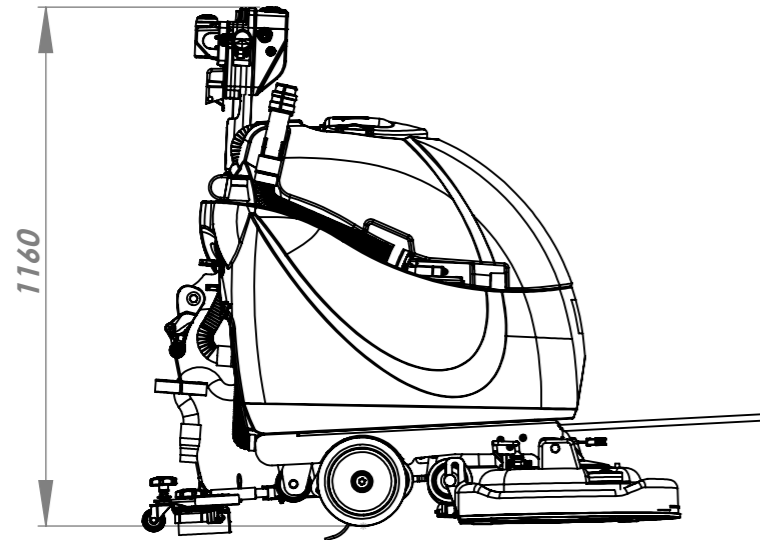
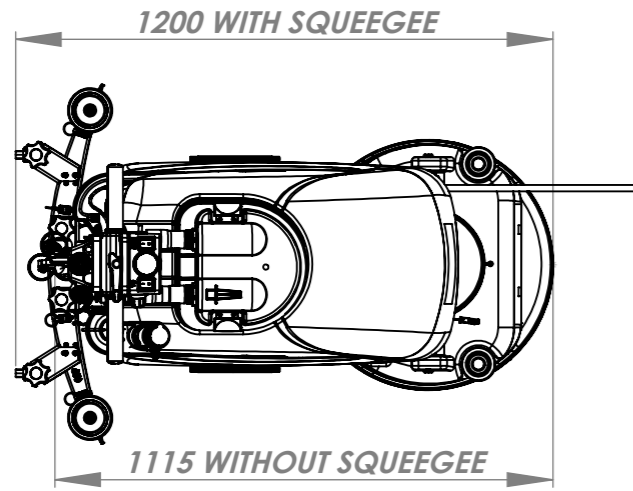
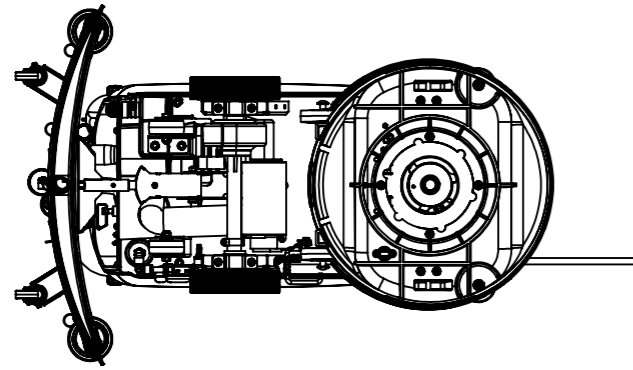
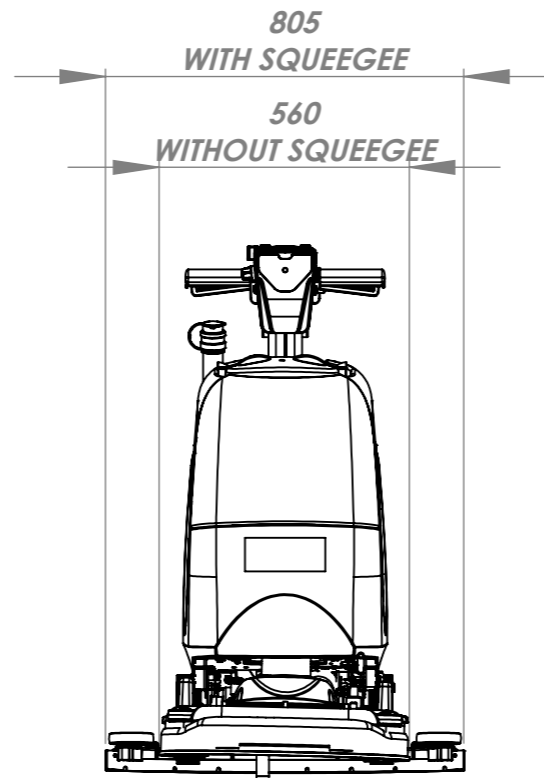


THIRD ANGLE PROJECTION



|                                       |  |   |   |
|---------------------------------------|--|---|---|
| <b>BRUSH WEIGHT</b>                   | 32kg<br>70.5lbs  | <b>GROSS WEIGHT ( i.e. with liquid)</b> | 100Ah: 179.5kg<br>100Ah: 395.7lbs                       |
| <b>BRUSH PRESSURE</b>                 | 19 g/cm <sup>2</sup><br>0.270 lbs/in <sup>2</sup>                        | <b>NETT WEIGHT ( i.e. NO liquid)</b>    | 100Ah: 139.5kg<br>100Ah: 307.5lbs                       |
| <b>PAD PRESSURE</b>                   | 16 g/cm <sup>2</sup><br>0.227 lbs/in <sup>2</sup>                        | <b>POWER SOURCE</b>                     | GELL BATTERY<br>24 VOLT (2x 12V) 100Ah / 80Ah           |
| <b>CLEANING AREA</b>                  | 970m <sup>2</sup> /HOUR @ 2 kph<br>10440ft <sup>2</sup> /HOUR @ 1.25 mph | <b>RUN TIME (BATTERY LIFE)</b>          | 2.25h MAX   |
| <b>BRUSH MOTOR POWER</b>              | 300W   | <b>RECHARGING TIME</b>                  | 8 HRS   |
| <b>BRUSH SPEED</b>                    | 100 rpm  | <b>INTERNAL CHARGER INPUT</b>           | 350W  |
| <b>BRUSH DIA</b>                      | 550mm<br>22in  | <b>INTERNAL CHARGER OUTPUT</b>          | 10A DC  |
| <b>PAD DIA</b>                        | 508mm<br>20in  | <b>BATTERY WEIGHT (TOTAL)</b>           | 80Ah : 54.5kg<br>80Ah : 120lbs                          |
| <b>VAC MOTOR MAX. POWER</b>           | 400W   | <b>HEIGHT</b>                           | 1160mm<br>45.6in  |
| <b>VAC MOTOR - SUCTION @ SQUEEGEE</b> | 120 mbar   | <b>LENGTH</b>                           | 1115mm (1200mm)<br>43.9in (47.2in)                      |
| <b>VAC MOTOR - AIRFLOW @ SQUEEGEE</b> | 24.2 l/sec (6.4 US gal/sec)  | <b>WIDTH</b>                            | 560mm (805mm)<br>22in (31.7in)                          |
| <b>WATER CAPACITY</b>                 | 40L<br>10.5 US gal   | <b>SQUEEGEE LENGTH</b>                  | 805mm<br>31.7in   |
| <b>WATER FLOW - AVERAGE</b>           | 0-2 l/min<br>0-0.53 US gal/min   | <b>SOUND PRESSURE LEVEL</b>             | ≤70 dB(A) : 66.8dB                                      |
| <b>DRIVE MOTOR POWER</b>              | 250W   | <b>VIBRATION LEVEL</b>                  | HAV 0.59 m/s <sup>2</sup><br>HAV 1.93 ft/s <sup>2</sup> |
| <b>DRIVE SPEED</b>                    | 0-4 kph<br>0-2.5 mph   | <b>TGB4055T (TGB1120T)</b>              |   |
| <b>WATER INGRESS PROTECTION</b>       | IPX4   |   |   |



**Numatic** INTERNATIONAL LTD  
MILLFIELD ROAD, CHARD, SOMERSET  
TA20 2GB ENGLAND

20.0 THE EXAMPLE SHOWN DETAILS THE METHOD USED FOR IDENTIFYING CRITICAL (INSPECTION) DIMENSIONS WHERE APPLICABLE

**TOLERANCES:-** LINEAR: 0 DECIMAL PLACES = +/- 1.0mm  
1 DECIMAL PLACE = +/- 0.25mm  
2 DECIMAL PLACES = +/- 0.05mm  
ANGULAR:- +/- 0.5 DEGREE

All components must be ROHS compliant.

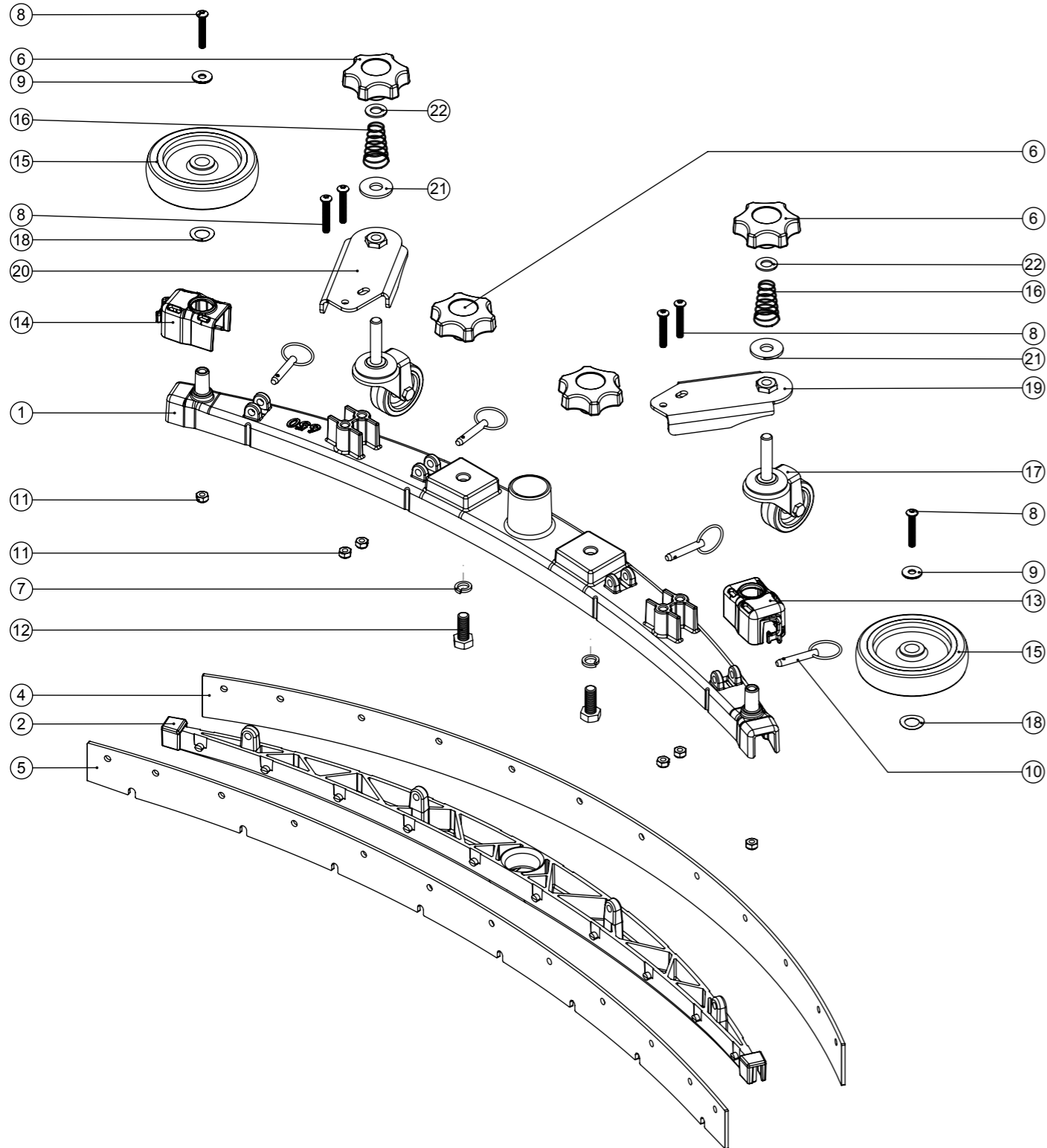
|                          |  |                               |  |                    |         |                  |                |  |   |                    |                  |
|--------------------------|--|-------------------------------|--|--------------------|---------|------------------|----------------|--|---|--------------------|------------------|
| A04 NEW DRAWING          |  | Internal Code: TBF            |  | DRAWN: PB          | APPD: - | DATE: 23/11/2014 | TOOL NUMBER: - | WEIGHT: -                                | DIMENSIONS IN MILLIMETERS: NOT TO SCALE | MATERIAL:-         | ITEM No(s):- N/A |
| REVISION: CHANGE DETAIL: |  | ST_Numatic_A3.sldprt 20030224 |  | Internal Code: TBF |         | DATE: 23/11/2014 | PRINT SIZE: A3 | TITLE:- TGB4055T TECHNICAL SPECIFICATION |   | DRG No:- DRW-23499 |                  |

# Numatic International Spare Parts

**Model No:** 650 TWINTEC ALUMINIUM FLOOR TOOL (38MM HOSE, RED TRIM, SERILOR BLADES)

Internal Code: 903347  
 DRAWING: DRW-22621 ISS:A05  
 MS5 24/10/2016

NB: FOR WIRING SEE DRAWING: N/A



# Numatic International Spare Parts

**Model No:** 650 TWINTEC ALUMINIUM FLOOR TOOL (38MM HOSE, RED TRIM, SERILOR BLADES)

*Provisional*

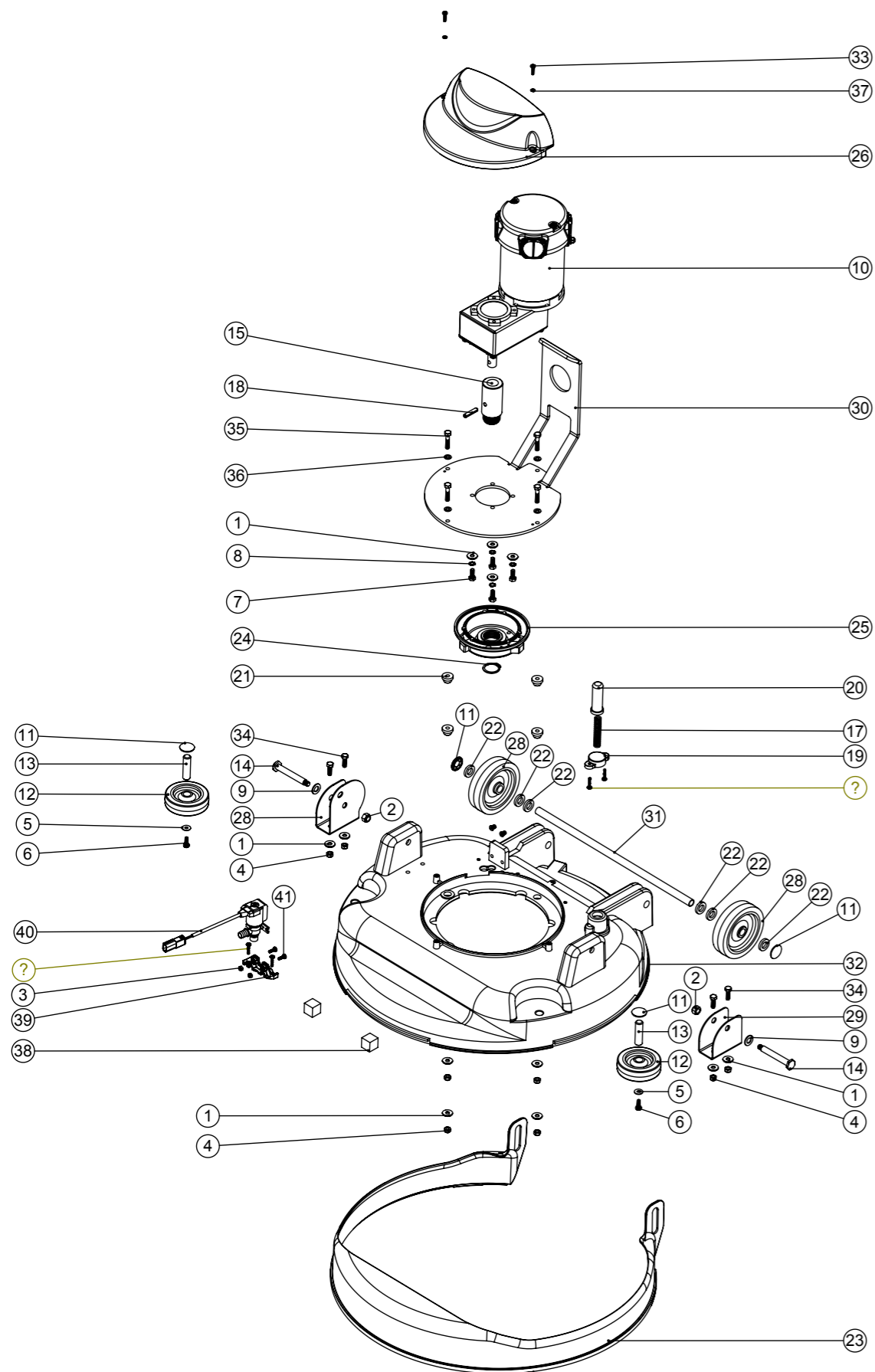
| ITEM: | PART No: | Description   | Qty |
|-------|----------|---|-----|
| 1     | 208198   | (650MM SCRUB WIDTH) ALUMINIUM SQUEEGEE CASTING (38MM HOSE FITTING)  | 1   |
| 2     | 903345   | (650MM SCRUB WIDTH) RED BLADE HOLDER MOULDING (SLOPING PROFILE) (32MM & 38MM HOSE FITTING)                | 1   |
|       | 900518   | 650 REPLACEMENT SERILOR GREEN POLYURETHANE BLADES SET   |     |
| 4     | 208970   | (650MM SCRUB WIDTH) REPLACEMENT (4.0MM / 35-45-35 SHORE A) REAR LAMINATED SERILOR POLY/BLADE (847MM LONG) | 1   |
| 5     | 208967   | (650MM SCRUB WIDTH) REPLACEMENT (3.2MM / 40 SHORE A) FRONT MONOLAYER SERILOR POLY/BLADE (819MM LONG)      | 1   |
| 6     | 903281   | M10 LOBE KNOB (RED)   | 4   |
| 7     | 219899   | M10 SINGLE COIL STAINLESS STEEL WASHER  | 2   |
| 8     | 219933   | M6 X 35MM SOCKET BUTTON HEAD BOLT STAINLESS STEEL   | 6   |
| 9     | 219647   | M6 FORM G STAINLESS STEEL WASHER  | 2   |
| 10    | 206953   | DETENT PINS   | 4   |
| 11    | 219642   | M6 STAINLESS STEEL NYLON INSERT NUT   | 6   |
| 12    | 219909   | M10 X 25MM LONG HEXAGONAL STAINLESS STEEL SCREW   | 2   |
| 13    | 237322   | RIGHT HAND FLOOR TOOL CLIP MOULDING   | 1   |
| 14    | 237323   | LEFT HAND FLOOR TOOL CLIP MOULDING  | 1   |
| 15    | 208796   | 4 INCH WHEEL  | 2   |
| 16    | 229175   | CONICAL SPRING  | 2   |
| 17    | 208497   | 50MM DIAMETER GREY TPR TYRED SWIVEL CASTORS C/W M10 X 45 SWAGED STEM.                                     | 2   |
| 18    | 219891   | 13MM WAVEY WASHER   | 2   |
| 19    | 304523   | ADJUSTABLE FLOOR TOOL CASTOR PLATE RHS WELD ASSY  | 1   |
| 20    | 304522   | ADJUSTABLE FLOOR TOOL CASTOR PLATE LHS WELD ASSY  | 1   |
| 21    | 291124   | M10 PENNY WASHER STAINLESS STEEL  | 2   |
| 22    | 219903   | M10 FORM A STAINLESS STEEL WASHER   | 2   |

# Numatic International Spare Parts

**Model No:** TGB4055 EXPLODED VIEW: BRUSH DECK

Internal Code: -  
 DRAWING: DRW-23008 ISS:A03  
 PRO 02/02/2017

NB: FOR WIRING SEE DRAWINGS:  
 230V : DRW-22704  
 120V : DRW-23196



# Numatic International Spare Parts

**Model No:** TGB4055 EXPLODED VIEW: BRUSH DECK

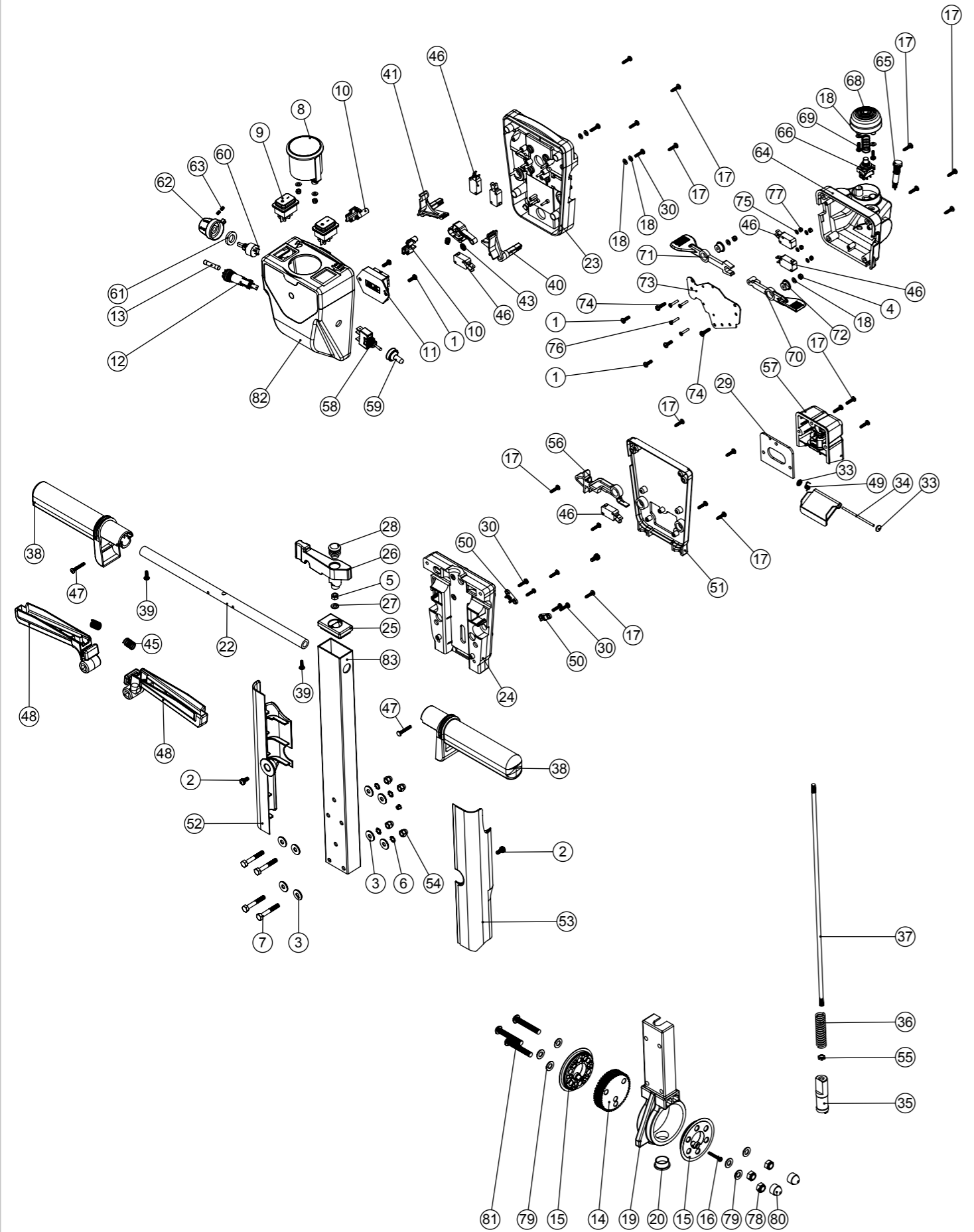
| ITEM: | PART No: | DESCRIPTION   | COMMENTS: | QTY |
|-------|----------|---|-----------|-----|
| 1     | 219647   | M6 FORM G STAINLESS STEEL WASHER                        |           | 12  |
| 2     | 219639   | M8 STAINLESS STEEL NYLON INSERT NUT                     |           | 2   |
| 3     | 219687   | M4 STAINLESS STEEL NYLON INSERT NUT                     |           | 2   |
| 4     | 219642   | M6 STAINLESS STEEL NYLON INSERT NUT                     |           | 8   |
| 5     | 219644   | M5 FORM G STAINLESS STEEL WASHER                        |           | 2   |
| 6     | 291132   | M5 X 16MM LONG STAINLESS STEEL POZI PAN SEMS SCREW      |           | 2   |
| 7     | 219719   | M6 X 16MM LONG HEXAGONAL STAINLESS STEEL HEAD BOLT      |           | 4   |
| 8     | 902353   | M6 EXTERNAL SHAKEPROOF WASHER STAINLESS STEEL           |           | 4   |
| 9     | 219903   | M10 FORM A STAINLESS STEEL WASHER                       |           | 2   |
| 10    | 205245   | AMER 100RPM MOTOR                                       |           | 1   |
| 11    | 204021   | 12.7MM STAINLESS STEEL HUB CAP                          |           | 4   |
| 12    | 204068   | 3 INCH GREY WHEEL                                       |           | 2   |
| 13    | 206013   | BUFFER WHEEL PIN  |           | 2   |
| 14    | 208626   | TT/TTB4055 PIVOT PIN                                    |           | 2   |
| 15    | 208727   | DRIVE SHAFT   |           | 1   |
| 16    | 219009   | M4 BRASS TAPPEX INSERT                                  |           | 2   |
| 17    | 219692   | COMPRESSION SPRING                                      |           | 1   |
| 18    | 291079   | 6MM X 30MM STAINLESS STEEL ROLL PIN                     |           | 1   |
| 19    | 223242   | PLUNGER MOUNTING PLATE MOULDING                         |           | 1   |
| 20    | 229128   | PLUNGER   |           | 1   |
| 21    | 229285   | MOTOR MOUNTING SPACER                                   |           | 4   |
| 22    | 229346   | SPACER  |           | 6   |
| 23    | 229562   | SPLASH SKIRT MOULDING                                   |           | 1   |
| 24    | 230048   | 26MM EXTERNAL CIRCLIP                                   |           | 1   |
| 25    | 230285   | MODIFIED CHUCK (BASED ON 230207)                        |           | 1   |
| 26    | 237380   | AMER MOTOR COVER  |           | 1   |
| 28    | 329187   | 100MM WHEEL (MODIFIED)                                  |           | 2   |
| 28    | 392248   | DECK MOUNT BRACKET                                      |           | 1   |
| 29    | 392279   | DECK MOUNT RH (550 DECK VERSION)                        |           | 1   |
| 30    | 392362   | MOTOR ADAPTOR PLATE PAINT SILVER GREY                   |           | 1   |
| 31    | 391439   | 1/2 INCH DIAMETER X 18G STAINLESS STEEL TUBE (0.375)    |           | 1   |
| 32    | 304404   | TTB4055 DECK MOULDING DRILLED (NEW DESIGN)              |           | 1   |
| 33    | 219862   | M4 X 16MM LONG POZI PAN STAINLESS STEEL SCREW           |           | 2   |
| 34    | 219976   | M6 X 20MM LONG HEXANGONAL HEAD SET SCREW                |           | 4   |
| 35    | 291022   | M6 X 30MM LONG STAINLESS STEEL HEXAGONAL HEAD BOLT      |           | 4   |
| 36    | 219870   | M6 FORM A WASHER STAINLESS STEEL                        |           | 4   |
| 37    | 291145   | M4 SHAKEPROOF WASHER STAINLESS STEEL                    |           | 2   |
| 38    | 902352   | FOAM SPACER 20MM  |           | 2   |
| 39    | 902556   | SOLENOID MOUNT MOULDING                                 |           | 1   |
| 40    | 902949   | TERMINATED SOLONOID CABLE.BLACK.125.0M5.2.24            |           | 1   |
| 41    | 219890   | M4 X 12MM LONG POZI PAN STAINLESS STEEL SCREW           |           | 2   |
| 42    | 219568   | NO8.3/4 INCH LG.POZI-PAN.SCREW.STAINLESS STEEL.PLASTITE |           | 4   |

# Numatic International Spare Parts

Model No: TGB4055T EXPLODED VIEW: HANDLE

NB: FOR WIRING SEE DRAWING:  
230V : DRW-24133  
120V : DRW-24136

Internal Code: -  
TB DRAWING: DRW-23404 ISS:A05



# Numatic International Spare Parts

Model No: TGB4055T EXPLODED VIEW: HANDLE

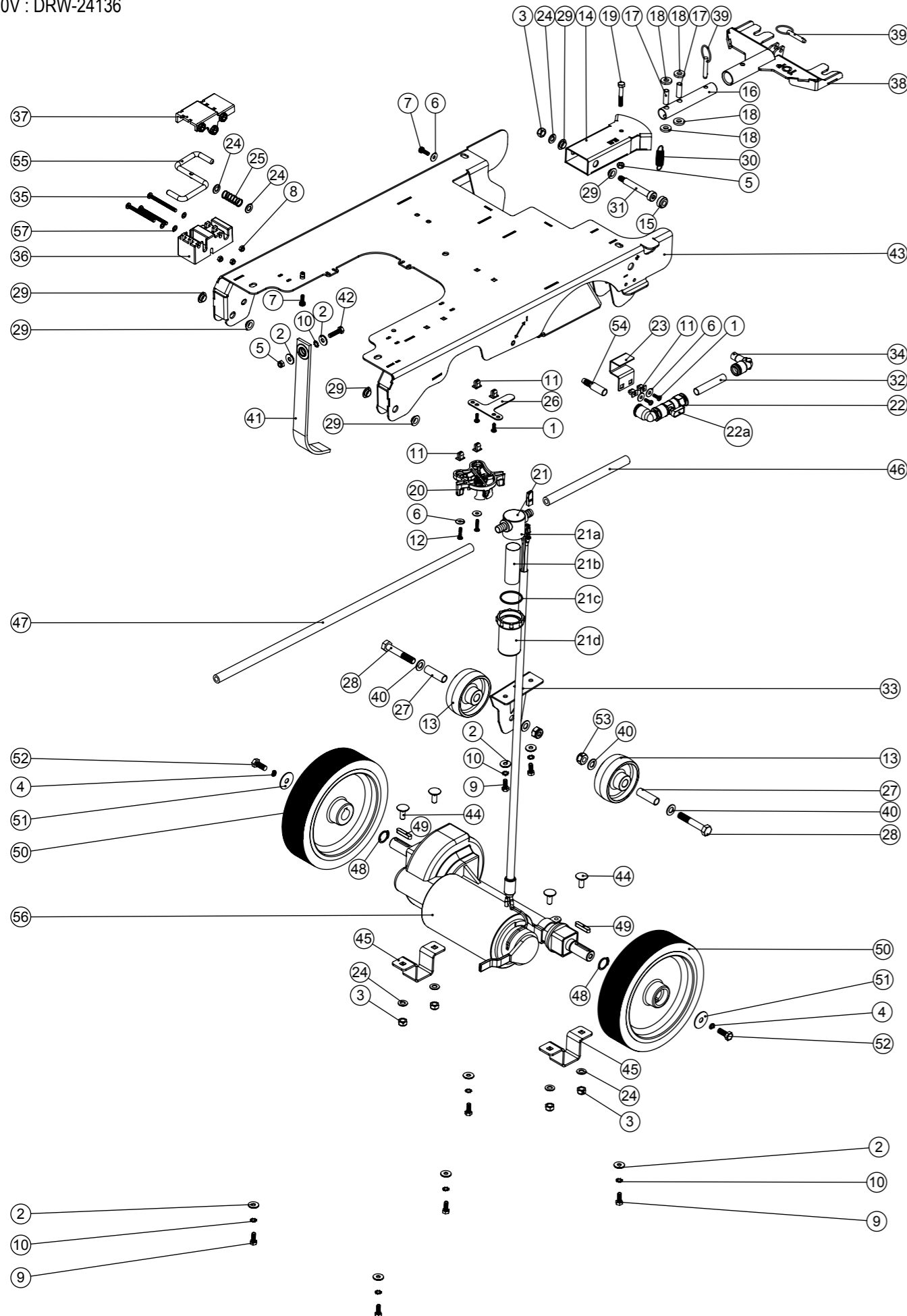
| ITEM: | PART No: | DESCRIPTION  | COMMENTS:            | QTY. |
|-------|----------|--|----------------------|------|
| 1     | 219569   | NO8 1/2 INCH. LG.POZI-PAN.SCREW.STAINLESS STEEL.PLASTITE   |                      | 5    |
| 2     | 291131   | M5 X 12MM LONG STAINLESS STEEL POZI PAN SEMS SCREW   |                      | 3    |
| 3     | 219647   | M6 FORM G STAINLESS STEEL WASHER   |                      | 8    |
| 4     | 219687   | M4 STAINLESS STEEL NYLON INSERT NUT  |                      | 4    |
| 5     | 219642   | M6 STAINLESS STEEL NYLON INSERT NUT  |                      | 1    |
| 6     | 902353   | M6 EXTERNAL SHAKEPROOF WASHER STAINLESS STEEL  |                      | 4    |
| 7     | 291125   | M6 X 40 LONG HEX BOLT STAINLESS STEEL  |                      | 4    |
| 8     | 902532   | BATTERY DISCHARGE INDICATOR + HOUR METER 24V   |                      | 1    |
| 9     | 902235   | SWITCH DPST RED ILLUMINATED WITH MEMBRANE 24V  |                      | 2    |
| 10    | 903558   | TGB HANDLE BOSS  |                      | 2    |
| 11    | 903766   | DMH Terminal Block PCB Assembly  |                      | 1    |
| 12    | 903032   | BULGIN PANEL MOUNT FUSEHOLDER  |                      | 1    |
| 13    | 903066   | FUSE 2.5A (6.3x32)   |                      | 1    |
| 14    | 900397   | MINI ADJUSTMENT GEAR   |                      | 1    |
| 15    | 900396   | ADJUSTMENT GEAR SPACER   |                      | 2    |
| 16    | 291150   | NO6 X 1 INCH LONG POZI PAN SCREW S/S   |                      | 1    |
| 17    | 219370   | NO8 X 5/8 INCH LONG PLASTITE STAINLESS STEEL SCREW   |                      | 19   |
| 18    | 219688   | M4 FORM A STAINLESS STEEL WASHER   |                      | 10   |
| 19    | 900398   | HANDLE CASTING MACHINED (HNS VERSION)  |                      | 1    |
| 20    | 229099   | 25MM DIA HOLE PLUG   |                      | 1    |
| 21    | 229009   | BLANKING PLUG  |                      | 1    |
| 22    | 338269   | CROSS TUBE   |                      | 1    |
| 23    | 227576   | FRONT INNER HALF MOULDING  | STANDARD MACHINE     | 1    |
|       | 229508   | FLAME RETARDANT FRONT INNER HALF MOULDING  | FLAME RETARDENT 120V | 1    |
| 24    | 227577   | REAR INNER HALF MOULDING   | STANDARD MACHINE     | 1    |
|       | 229509   | FLAME RETARDANT REAR INNER HALF MOULDING   | FLAME RETARDENT 120V | 1    |
| 25    | 903546   | HANDLE PLUG MOULDING (RED)   |                      | 1    |
| 26    | 903545   | ADJUSTMENT LEVER MOULDING (RED)  |                      | 1    |
| 27    | 219493   | M6 NYLON WASHER  |                      | 1    |
| 28    | 20638V   | 19MM BLACK TUBE END STOP   |                      | 1    |
| 29    | 202105   | SOCKET COVER SEALING GASKET  |                      | 1    |
| 30    | 219914   | NO6 X 5/8 INCH LONG POZI-PAN PLASTITE STAINLESS STEEL SCREW  |                      | 5    |
| 31    | 219107   | NO6.5/8 INCH LG.POZI-PAN.SCREW.Z/PL.PLASTITE   |                      | 1    |
| 32    | 227781   | FLAP MOULDING  |                      | 1    |
| 33    | 219832   | 3MM DIAMETER STARLOCK  |                      | 2    |
| 34    | 390979   | 72MM LONG X 3MM DIAMETER STAINLESS STEEL BAR   |                      | 1    |
| 35    | 229073   | GEAR LOCKING PIN   |                      | 1    |
| 36    | 229138   | SPRING   |                      | 1    |
| 37    | 229461   | 440MM HANDLE LOCKING ROD   |                      | 1    |
| 38    | 227580   | HAND GRIP MOULDING   |                      | 2    |
| 39    | 219270   | NO8 X 1/2 INCH LONG POZI PAN SELF TAP SCREW  |                      | 2    |
| 40    | 227585   | LEFT HAND SWITCH OPERATING LEVER MOULDING  |                      | 1    |
| 41    | 227586   | RIGHT HAND SWITCH OPERATING LEVER MOULDING   |                      | 1    |
| 42    | 227587   | CENTRE SWITCH OPERATING LEVER MOULDING   |                      | 1    |
| 43    | 219805   | 4MM SPIREFIX   |                      | 1    |
| 44    | 219804   | SWITCH COMPRESSION SPRING  |                      | 1    |
| 45    | 219803   | TRIGGER COMPRESSION SPRING   |                      | 2    |
| 46    | 229483   | SNAP ACTION SWITCH   |                      | 6    |
| 47    | 219811   | NO8 X 1 INCH LONG POZI-PAN SELF TAP SCREW  |                      | 2    |
| 48    | 903547   | TRIGGER MOULDING (RED)   |                      | 2    |
| 49    | 219819   | TORSION SPRING   |                      | 1    |
| 50    | 229669   | LOLINE HANDLE CABLE CLAMP  |                      | 2    |
| 51    | 303509   | MODIFIED REAR COVER  | STANDARD MACHINE     | 1    |
|       | 303777   | PROCESSED TRACTION DRIVE REAR HANDLE COVER (FLAME RETARDENT)   | FLAME RETARDENT 120V | 1    |
| 52    | 237692   | HANDLE CABLE COVER L/H   |                      | 1    |
| 53    | 237693   | HANDLE CABLE COVER R/H   |                      | 1    |
| 54    | 219764   | M6 STAINLESS STEEL DOME NUT  |                      | 4    |
| 55    | 219099   | M6 HALF NUT  |                      | 1    |
| 56    | 227584   | INTERLOCK LEVER MOULDING   |                      | 1    |
| 57    | 904030   | 240V EMI FILTER WITH SOCKET COVER ASSEMBLY (PROCESSED)   | 240V VERSION         | 1    |
|       | 904031   | 120V EMI FILTER WITH SOCKET COVER ASSEMBLY (PROCESSED)   | 120V VERSION         | 1    |
| 58    | 206786   | SWITCH   |                      | 1    |
| 59    | 206785   | SWITCH COVER C/W NUT   |                      | 1    |
| 60    | 270316   | POTENTIOMETER TYPE Pe30 22k OHMS 20% 3W (WITH PANEL SEAL) (ROUND SHAFT WITH FLAT / NO SLOT IN SHAFT END) |                      | 1    |
| 61    | 229346   | SPACER   |                      | 1    |
| 62    | 903498   | SPEED ADJUSTMENT KNOB C/W INSERT (RED)   |                      | 1    |
| 63    | 219744   | M4 X 6MM LONG BLACKODISED GRUB SCREW   |                      | 2    |
| 64    | 237315   | TWINTec HANDLE REAR POD MOULDING (LESS SPEED CONTROL / DIRECTIONAL SWITCH HOLES)                         | STANDARD MACHINE     | 1    |
|       | 237316   | FLAME RETARDANT TWINTec HANDLE REAR POD MOULDING (LESS SPEED CONTROL / DIRECTIONAL SWITCH HOLES)         | FLAME RETARDENT 120V | 1    |
| 65    | 270291   | GREEN LED INDICATOR 2V C/W 2.2K RESISTOR   |                      | 1    |
| 66    | 270295   | PUSH BUTTON SWITCH   |                      | 1    |
| 67    | 219816   | COMPRESSION SPRING   |                      | 1    |
| 68    | 227683   | EMERGENCY STOP BUTTON  |                      | 1    |
| 69    | 219601   | NO8 X 3/8 INCH LONG POZI PAN PLASTITE SCREW  |                      | 2    |
| 70    | 904159   | LH DIRECTION TRIGGER (RED)   |                      | 1    |
| 71    | 904158   | RH DIRECTION TRIGGER (RED)   |                      | 1    |
| 72    | 206579   | SHOULDERED SPACER  |                      | 2    |
| 73    | 329298   | DIRECTION TRIGGER MOUNTING PLATE   |                      | 1    |
| 74    | 219862   | M4 X 16MM LONG POZI PAN STAINLESS STEEL SCREW  |                      | 2    |
| 75    | 219501   | M3 FORM A STAINLESS STEEL WASHER   |                      | 4    |
| 76    | 902065   | M3 X 16MM LONG POZI PAN SCREW STAINLESS STEEL  |                      | 4    |
| 77    | 291154   | M3 NYLON INSERT NUT STAINLESS STEEL  |                      | 4    |
| 78    | 219639   | M8 STAINLESS STEEL NYLON INSERT NUT  |                      | 3    |
| 79    | 219578   | M8 FORM A STAINLESS STEEL WASHER   |                      | 6    |
| 80    | 903260   | BOLT AND NUT CAP   |                      | 2    |
| 81    | 219922   | M8 X 50MM LONG SOCKET BUTTON HEAD STAINLESS STEEL BOLT   |                      | 3    |
| 82    | 903557   | TGB HANDLE FRONT COVER (TRACTION) TFPP   | STANDARD MACHINE     | 1    |
|       | 903561   | TGB HANDLE FRONT COVER (TRACTION) FRPP   | FLAME RETARDENT 120V | 1    |
| 83    | 903603   | TGB/TTG 430MM PROCESSED ALI HANDLE PAINT SILVER  |                      | 1    |

# Numatic International Spare Parts

Model No: TGB4055T EXPLODED VIEW: CHASSIS

Internal Code: -  
TB DRAWING: DRW-23402 ISS:A09

NB: FOR WIRING SEE DRAWING:  
230V : DRW-24133  
120V : DRW-24136



# Numatic International Spare Parts

Model No: TGB4055T EXPLODED VIEW: CHASSIS

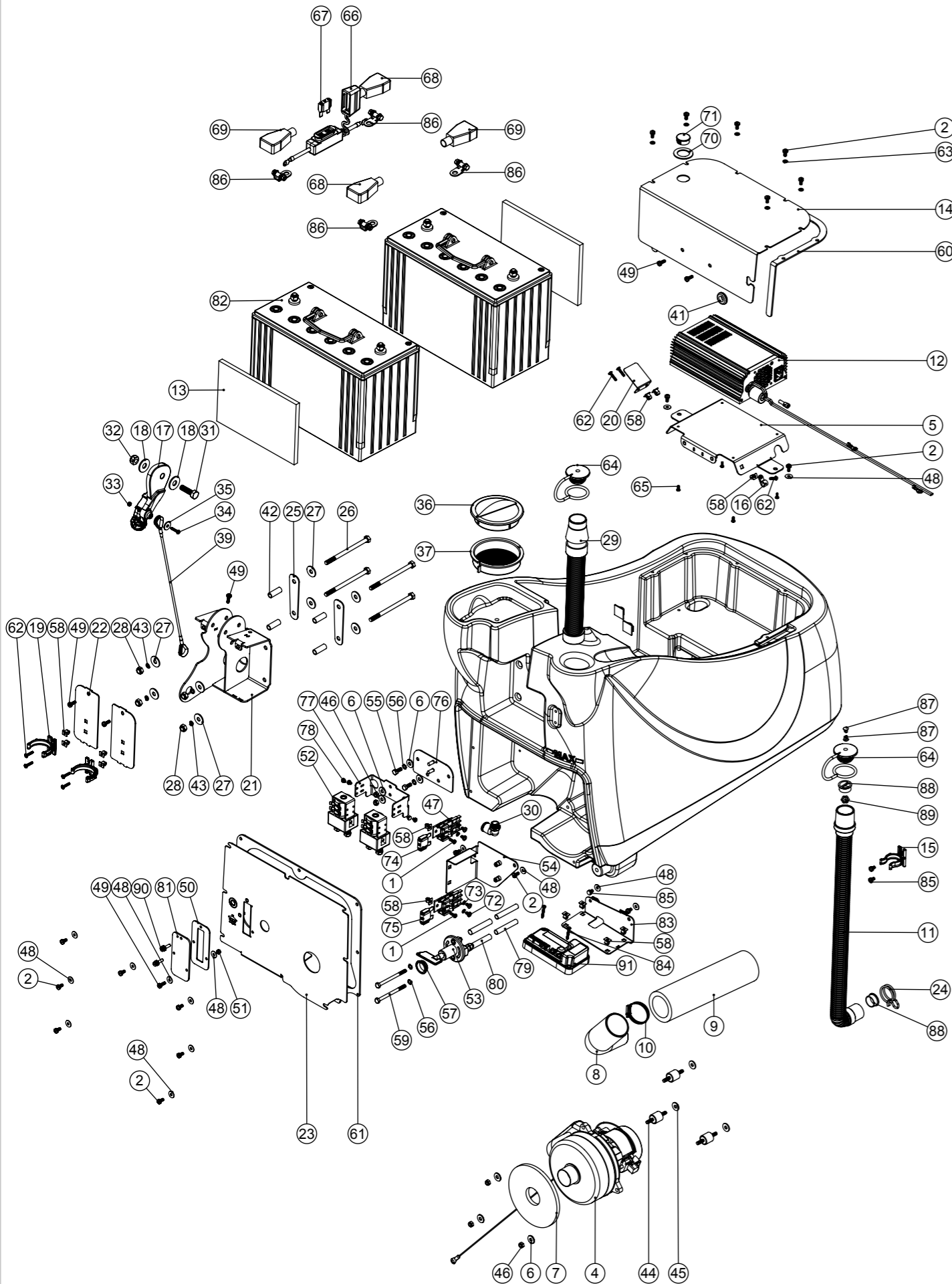
| ITEM: | PART No: | DESCRIPTION   | COMMENTS:  | QTY. |
|-------|----------|---|------------|------|
| 1     | 219569   | NO8. 1/2 INCH. LG.POZI-PAN.SCREW.STAINLESS STEEL.PLASTITE       |            | 4    |
| 2     | 219647   | M6 FORM G STAINLESS STEEL WASHER                                |            | 9    |
| 3     | 219639   | M8 STAINLESS STEEL NYLON INSERT NUT                             |            | 5    |
| 4     | 219898   | M8 SINGLE COIL STAINLESS STEEL WASHER                           |            | 2    |
| 5     | 219642   | M6 STAINLESS STEEL NYLON INSERT NUT                             |            | 2    |
| 6     | 219644   | M5 FORM G STAINLESS STEEL WASHER                                |            | 5    |
| 7     | 291132   | M5 X 16MM LONG STAINLESS STEEL POZI PAN SEMS SCREW              |            | 2    |
| 8     | 219633   | M5 STAINLESS STEEL NYLON INSERT NUT                             |            | 3    |
| 9     | 219719   | M6 X 16MM LONG HEXAGONAL STAINLESS STEEL HEAD BOLT              |            | 7    |
| 10    | 902353   | M6 EXTERNAL SHAKEPROOF WASHER STAINLESS STEEL                   |            | 8    |
| 11    | 900986   | NYLON GROMMET NUT (PLASTIC INSERT TO SUIT No 8 PLASTITE SCREW)  |            | 6    |
| 12    | 219568   | NO8.3/4 INCH LG.POZI-PAN.SCREW.STAINLESS STEEL.PLASTITE         |            | 2    |
| 13    | 206713   | 80MM DIAMETER WHITE WHEEL                                       |            | 2    |
| 14    | 304359   | TT/TTB/4045/4055 SQUEEGEE MOUNT WELD ASSEMBLY                   |            | 1    |
| 15    | 237632   | SHOULDER BOLT COVER   |            | 1    |
| 16    | 304356   | FLOOR TOOL PIVOT TUBE   |            | 1    |
| 17    | 206954   | SPIRO SPACER  |            | 2    |
| 18    | 206964   | SLIDE NYLON SPACER  |            | 4    |
| 19    | 291125   | M6 X 40 LONG HEX BOLT STAINLESS STEEL                           |            | 1    |
| 20    | 901006   | FILTER MOUNTING BRACKET   |            | 1    |
| 21    | 208888   | EXTENDED STRAINER   |            | 1    |
| 21a   | 208827   | STRAINER BLACK TOP  | SPARE PART | 1    |
| 21b   | 208889   | EXTENDED STRAINER 50 MESH SCREEN                                | SPARE PART | 1    |
| 21c   | 208830   | STRAINER GASKET   | SPARE PART | 1    |
| 21d   | 208890   | EXTENDED STRAINER CLEAR BOWL                                    | SPARE PART | 1    |
| 22    | 901541   | 12MM SWIVEL ELBOW PUSH FIT TO 12MM PUSH FIT BALL VALVE ASSEMBLY |            | 1    |
| 22a   | 901544   | TAP HANDLE C/W COVER AND M3X6MM SCREW (SPARE ITEM)              | SPARE PART | 1    |
| 23    | 392314   | 10MM TAP BRACKET  |            | 1    |
| 24    | 219578   | M8 FORM A STAINLESS STEEL WASHER                                |            | 7    |
| 25    | 208578   | DECK LOCK SPRING  |            | 1    |
| 26    | 321902   | SILENCER CLAMP  |            | 1    |
| 27    | 391440   | 1/2 INCH X 18G X 41MM LONG STAINLESS STEEL SPACER TUBE          |            | 2    |
| 28    | 219894   | M10 X 60MM LONG HEXAGONAL STAINLESS STEEL BOLT                  |            | 2    |
| 29    | 208312   | IGUS BEARING (GFM 101205)                                       |            | 6    |
| 30    | 208619   | FLOOR TOOL SPRING   |            | 1    |
| 31    | 208574   | M8 X 10 X 60MM LONG HEX SOCKET SHOULDER BOLT                    |            | 1    |
| 32    | 901553   | NYLON TUBE 12MM OD X 10MM ID (65MM)                             |            | 1    |
| 33    | 903611   | TGB TRANSPORT WHEEL BRACKET WELD ASSEMBLY PAINT SILVER          |            | 1    |
| 34    | 901545   | ELBOW ANGLE CONNECTOR 12MM PUSH IN TO 12MM STEM                 |            | 1    |
| 35    | 901558   | M5 X 60MM STAINLESS STEEL POZI PAN MACHINE SCREW                |            | 3    |
| 36    | 901280   | LATCH BLOCK BOTTOM MOULDING                                     |            | 1    |
| 37    | 901279   | LATCH BLOCK TOP MOULDING  |            | 1    |
| 38    | 304466   | FLOOR TOOL BRACKET ASSEMBLY (TT/TTB4045/4055)                   |            | 1    |
| 39    | 206953   | DETENT PINS   |            | 2    |
| 40    | 219903   | M10 FORM A STAINLESS STEEL WASHER                               |            | 4    |
| 41    | 903683   | ANTI-STATIC STRAP (CUT TO LENGHT: 270MM LONG)                   |            | 1    |
| 42    | 219925   | M6 x 25MM LONG STAINLESS STEEL HEX SCREW                        |            | 1    |
| 43    | 904155   | TGB4055T TRACTION CHASSIS WELD ASSY PAINTED SILVER              |            | 1    |
| 44    | 291104   | M8 X 20 COACH BOLT S/S  |            | 4    |
| 45    | 904156   | TGB TRANSAXLE MOUNTING BRACKET                                  |            | 2    |
| 46    | 330230   | SILICON TUBE 8MM I/D X 3.2MM WALL SECTION (CUT 400MM)           |            | 1    |
| 47    | 391216   | SILICON TUBE 600MM LONG X 8MM I/D X 3.2MM WALL SECTION          |            | 1    |
| 48    | 219889   | 19MM HEAVY DUTY CIRCLIP   |            | 2    |
| 49    | 206744   | 6MM X 6MM X 32MM FEATHER KEY                                    |            | 2    |
| 50    | 204115   | 200MM X 50MM TRACTION WHEEL - GREY PU TREAD COMBED PROFILE      |            | 2    |
| 51    | 219877   | M8 X 30 STAINLESS STEEL WASHER                                  |            | 2    |
| 52    | 219717   | M8 X 20MM LONG HEXAGONAL STAINLESS STEEL BOLT                   |            | 2    |
| 53    | 219897   | M10 STAINLESS STEEL NYLON INSERT NUT                            |            | 2    |
| 54    | 901534   | PUSH IN BARBED CONNECTOR - 12MM OD 8MM ID                       |            | 1    |
| 55    | 904440   | DECK LATCH BAR  |            | 1    |
| 56    | 904753   | 465MM LONG ASI TRANSAXLE C/W SHORTNED 640MM WIRES               |            | 1    |
| 57    | 219355   | M5 FORM A STAINLESS STEEL WASHER                                |            | 3    |



# Numatic International Spare Parts

Model No: TGB4055T EXPLODED VIEW: BOTTOM TANK

NB: FOR WIRING SEE DRAWING:  
230V : DRW-24133  
120V : DRW-24136



Internal Code: -  
TB DRAWING: DRW-23403 ISS:A08

# Numatic International Spare Parts

Model No: TGB4055T EXPLODED VIEW: BOTTOM TANK

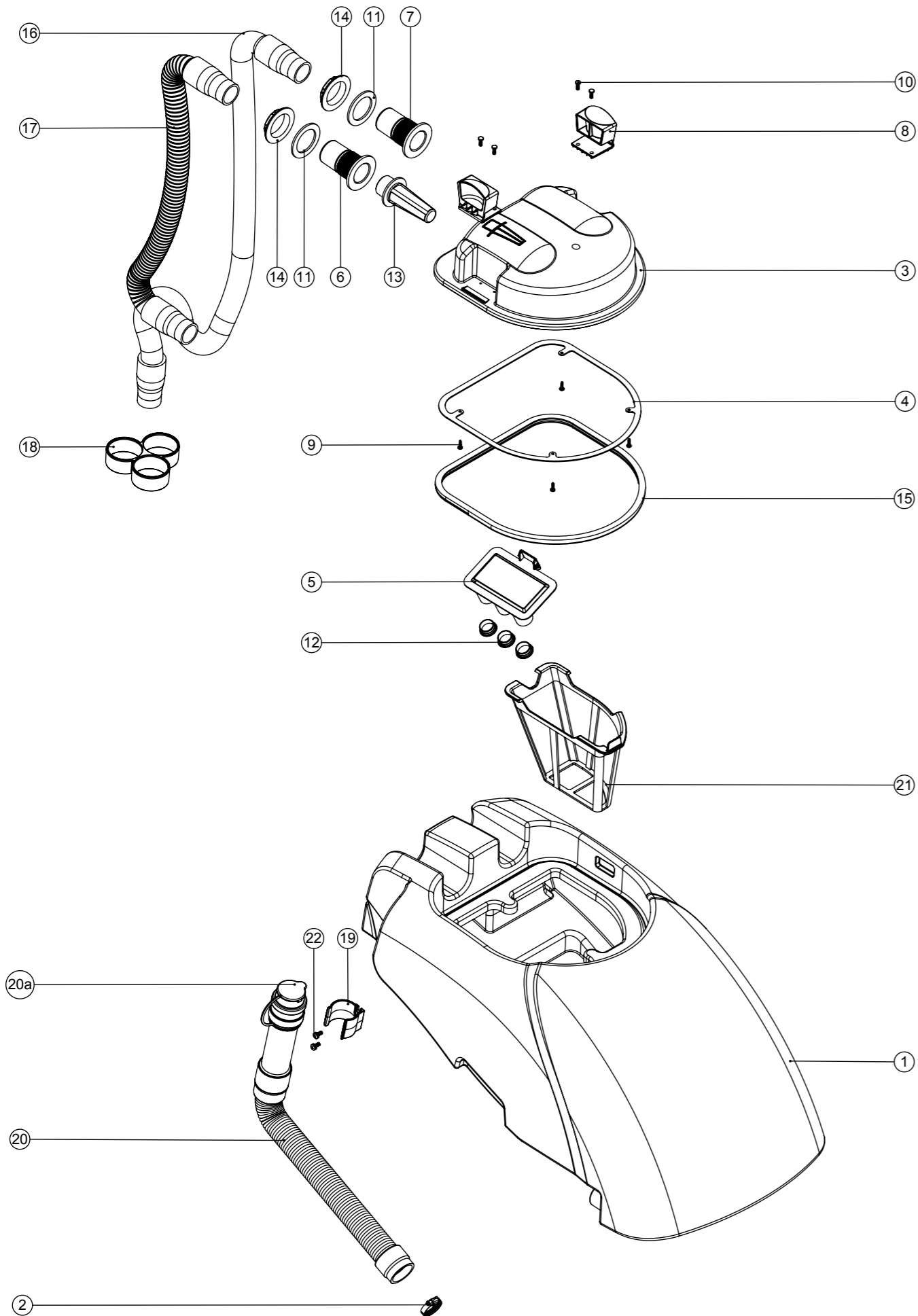
| ITEM: | PART No: | DESCRIPTION  | COMMENTS:                | QTY. |
|-------|----------|--|--------------------------|------|
| 1     | 219569   | NO8.1/2 INCH. LG.POZI-PAN.SCREW.STAINLESS STEEL.PLASTITE             |                          | 2    |
| 2     | 291131   | M5 X 12MM LONG STAINLESS STEEL POZI PAN SEMS SCREW                   |                          | 17   |
| 3     | 237741   | TTB.4055 BOTTOM TANK MOULDING HD (GRAPHITE)                          |                          | 1    |
| 4     | 903473   | 24V TANGENTIAL DISCHARGE 2-STAGE VAC MOTOR ASSEMBLY                  |                          | 1    |
| 5     | 903537   | CHARGER PLATE - PAINTED SILVER                                       |                          | 1    |
| 6     | 219647   | M6 FORM G STAINLESS STEEL WASHER                                     |                          | 7    |
| 7     | 208477   | MOTOR PAD  |                          | 1    |
| 8     | 208571   | DIP MOULDED ELBOW  |                          | 1    |
| 9     | 208306   | SILENCER FOAM TUBE   |                          | 1    |
| 10    | 219529   | STAINLESS STEEL HOSE CLAMP (45MM - 60MM)                             |                          | 1    |
| 11    | 213025   | DUMP HOSE  |                          | 1    |
| 12    | 903933   | CHARGER ASSEMBLY NORD 230V 10A                                       | 230V VERSION             | 1    |
|       | 903934   | CHARGER ASSEMBLY NORD 120V 10A                                       | 120V VERSION             | 1    |
| 13    | 208645   | FOAM BATTERY SPACER  |                          | 2    |
| 14    | 903536   | CHARGER COVER PLATE PAINTED SILVER                                   |                          | 1    |
| 15    | 901916   | 28mm HOSE CLIP   |                          | 1    |
| 16    | 219393   | P CLIP   |                          | 1    |
| 17    | 902324   | RED SQUEEGEE LIFT HANDLE   |                          | 1    |
| 18    | 291124   | M10 PENNY WASHER STAINLESS STEEL                                     |                          | 2    |
| 19    | 237754   | 35-38MM HOSE CLIP  |                          | 2    |
| 20    | 392356   | TTB NORD CHARGER MIRROR PLATE  |                          | 1    |
| 21    | 903612   | TGB 3045 HANDLE MOUNT WELD ASSEMBLY Z/PL                             |                          | 1    |
| 22    | 903539   | HANDLE MOUNT COVER PAINTED SILVER                                    |                          | 2    |
| 23    | 903538   | TGB4045/55 BACK PLATE PAINTED SILVER                                 |                          | 1    |
| 24    | 902133   | SPRING WIRE CLAMP (YDNAC-Y8010356)                                   |                          | 1    |
| 25    | 392449   | HANDLE MOUNT LINK PLATE PAINT SILVER                                 |                          | 2    |
| 26    | 291126   | M8 X 120 LONG HEX BOLT STAINLESS STEEL                               |                          | 4    |
| 27    | 219716   | M8 FORM G STAINLESS STEEL WASHER                                     |                          | 8    |
| 28    | 219639   | M8 STAINLESS STEEL NYLON INSERT NUT                                  |                          | 4    |
| 29    | 208960   | TTB/TT FILLING HOSE  |                          | 1    |
| 30    | 901539   | ELBOW ANGLE CONNECTOR 3/8 PARALLEL THREAD C/W O-RING TO 12MM PUSH IN |                          | 1    |
| 31    | 219895   | M10 X 35MM LONG HEXAGONAL STAINLESS STEEL SCREW                      |                          | 1    |
| 32    | 219897   | M10 STAINLESS STEEL NYLON INSERT NUT                                 |                          | 1    |
| 33    | 219687   | M4 STAINLESS STEEL NYLON INSERT NUT                                  |                          | 1    |
| 34    | 219686   | M4 X 20MM LONG STAINLESS STEEL POZI PAN MACHINE SCREW                |                          | 1    |
| 35    | 291118   | M5 STAINLESS STEEL WASHER 19MM OD                                    |                          | 1    |
| 36    | 903544   | FILLER CAP LID (RED)   |                          | 1    |
| 37    | 903543   | CLEAN TANK INLET FILTER (RED)  |                          | 1    |
| 38    | 220403   | CABLE CLIP   |                          | 2    |
| 39    | 208961   | TTB LIFTING WIRE   |                          | 1    |
| 40    | 219558   | M5 STAINLESS STEEL NUTSERT   |                          | 3    |
| 41    | 219735   | GROMMET  |                          | 1    |
| 42    | 305046   | 30MM PVC HOSE ID 8.0MM X 11.0MM                                      |                          | 4    |
| 43    | 219898   | M8 SINGLE COIL STAINLESS STEEL WASHER                                |                          | 4    |
| 44    | 902006   | AV MOUNT MALE TO MALE M6 X 18 (BODY Ø20X20 - REF.P2004.020-020)      |                          | 3    |
| 45    | 219008   | M6 FORM G WASHER   |                          | 3    |
| 46    | 219642   | M6 STAINLESS STEEL NYLON INSERT NUT                                  |                          | 5    |
| 47    | 230102   | FUSE HOLDER RATED AT 60 AMPS   |                          | 2    |
| 48    | 219644   | M5 FORM G STAINLESS STEEL WASHER                                     |                          | 15   |
| 49    | 291132   | M5 X 16MM LONG STAINLESS STEEL POZI PAN SEMS SCREW                   |                          | 6    |
| 50    | 903601   | FUSE PLATE GASKET  |                          | 1    |
| 51    | 219633   | M5 STAINLESS STEEL NYLON INSERT NUT                                  |                          | 1    |
| 52    | 230111   | CONTACTOR  |                          | 2    |
| 53    | 206746   | MASTER KEY SWITCH & KEY  | 206813 SPARE KEY         | 1    |
| 54    | 903568   | ISOLATOR SUPPORT BRACKET PAINTED SILVER                              |                          | 1    |
| 55    | 219719   | M6 X 16MM LONG HEXAGONAL STAINLESS STEEL HEAD BOLT                   |                          | 2    |
| 56    | 902353   | M6 EXTERNAL SHAKEPROOF WASHER STAINLESS STEEL                        |                          | 4    |
| 57    | 902331   | QF PVC GROMMET (26MM X 22MM X 2MM)                                   |                          | 1    |
| 58    | 900986   | NYLON GROMMET NUT (PLASTIC INSERT TO SUIT No 8 PLASTITE SCREW)       |                          | 13   |
| 59    | 219915   | M6 X 80MM LONG STAINLESS STEEL HEXAGONAL HEAD BOLT                   |                          | 2    |
| 60    | 903541   | CHARGER COVER GASKET   |                          | 1    |
| 61    | 903540   | BACK PLATE GASKET  |                          | 1    |
| 62    | 219568   | NO8.3/4 INCH LG.POZI-PAN.SCREW.STAINLESS STEEL.PLASTITE              |                          | 7    |
| 63    | 219355   | M5 FORM A STAINLESS STEEL WASHER                                     |                          | 6    |
| 64    | 903341   | 32MM HOSE CAP RED (C/W 8MM HOLE)                                     |                          | 2    |
| 65    | 902533   | No6 X 3/8 INCH LONG POZI PAN SELF TAP SCREW STAINLESS STEEL          |                          | 4    |
| 66    | 903175   | WATERPROOF BATTERY FUSE HOLDER.210.RING.RING                         |                          | 1    |
| 67    | 221047   | 40 AMP MAXI FUSE   |                          | 1    |
| 68    | 208936   | BLACK BATTERY TERMINAL COVER (415N8V14)                              |                          | 2    |
| 69    | 208935   | RED BATTERY TERMINAL COVER (415N8V02)                                |                          | 2    |
| 70    | 902328   | WINDOW PLUG GASKET   |                          | 1    |
| 71    | 206314   | WINDOW PLUG  |                          | 1    |
| 72    | 219864   | M5 X 8MM LONG POZI-PAN SCREW Z/PL                                    |                          | 4    |
| 73    | 219861   | M5 SINGLE COIL STAINLESS STEEL WASHER                                |                          | 4    |
| 74    | 230104   | 30 AMP MAXI FUSE   |                          | 1    |
| 75    | 221091   | 20 AMP MAXI FUSE   |                          | 1    |
| 76    | 903571   | CONTACTOR ADAPTER BRACKET ASSY PAINTED SILVER                        |                          | 1    |
| 77    | 903572   | CONTACTOR BRACKET (TGB) PAINTED SILVER                               |                          | 1    |
| 78    | 219566   | M4 X 6MM LONG POZI PAN SCREW   |                          | 4    |
| 79    | 903663   | 10MM O/D X 1MM WALL THICKNESS S/STEEL TUBE CUT TO LENGTH (0.060)     |                          | 2    |
| 80    | 903664   | 60MM LONG X 10MM I/D BLACK PVC SLEEVING                              |                          | 2    |
| 81    | 903602   | FUSE COVER PLATE   |                          | 1    |
| 82    | 230138   | 98 A/H STUD TERMINAL GEL TYPE BATTERY                                | 100Ah (SALES USE 205112) | 2    |
|       | 220867   | 12V TRACTION BLOCK BATTERY   | 80Ah VERSION             | 2    |
| 83    | 904148   | TGB4055T MOTOR CONTROLLER BRACKET PAINTED SILVER                     |                          | 1    |
| 84    | 219826   | NO8 X 1 1/4 INCH LONG POZI DRIVE COUNTERSUNK HEAD SCREW              |                          | 2    |
| 85    | 291135   | M5 X 10MM LONG STAINLESS STEEL POZI PAN SEMS SCREW                   |                          | 4    |
| 86    | 902666   | BATTERY CONNECTOR (M6 - M10)   | 100Ah VERSION            | 4    |
|       | 220455   | BATTERY TERMINAL NEGATIVE (-)  | 80Ah VERSION             | 2    |
|       | 220454   | BATTERY TERMINAL POSITIVE (+)  | 80Ah VERSION             | 2    |
| 87    | 904403   | BARBED RIVET BLACK   |                          | 2    |
| 88    | 904108   | FLOAT STOP MOULDING  |                          | 2    |
| 89    | 904109   | FLOAT MOULDING   |                          | 1    |
| 90    | 904491   | M5 x16MM SLOT KNURLED THUMB SCREW NYLON (WHITE)                      |                          | 2    |
| 91    | 330037   | PROGRAMMED MOTOR CONTROLLER  |                          | 1    |

# Numatic International Spare Parts

Model No: TGB4045/4055 EXPLODED VIEW: TOP TANK

Internal Code: -  
MS5 DRAWING: DRW-22926 ISS:A05

NB: FOR WIRING SEE DRAWING: N/A



# Numatic International Spare Parts

Model No: TGB4045/4055 EXPLODED VIEW: TOP TANK

| ITEM: | PART No: | DESCRIPTION   | COMMENTS:  | QTY |
|-------|----------|---|------------|-----|
| 1     | 903157   | TTB.4055 TOP TANK MOULDING (GRAPHITE GREY)                |            | 1   |
| 2     | 206209   | A.B.A HOSE CLIP   |            | 1   |
| 3     | 237381   | INTEGRATED CHASSIS SEPARATOR                              |            | 1   |
| 4     | 392200   | FILTER GASKET RING  |            | 1   |
| 5     | 237090   | SEPARATOR FLOAT MOULDING (MK 2)                           |            | 1   |
| 6     | 237526   | 38MM RED DRAIN HOSE CONNECTOR                             |            | 1   |
| 7     | 237018   | 38MM DRAIN HOSE CONNECTOR                                 |            | 1   |
| 8     | 902919   | CLIP MOULDING (RED)                                       |            | 2   |
| 9     | 219852   | NO6 X 1/2 LONG POZI PAN STAINLESS STEEL SELF TAP SCREW    |            | 4   |
| 10    | 219569   | NO8.1/2 INCH. LG.POZI-PAN.SCREW.STAINLESS STEEL.PLASTITE  |            | 4   |
| 11    | 219310   | RUBBER WASHER   |            | 2   |
| 12    | 206315   | TUBE END PLUG   |            | 3   |
| 13    | 206265   | TT/B 345 BARREL FILTER                                    |            | 1   |
| 14    | 206116   | BLACK NUT   |            | 2   |
| 15    | 208591   | NEW SEPARATOR GASKET                                      |            | 1   |
| 16    | 280019   | 35MM X 690MM LONG 3:1 STRETCH HOSE (SHORT & LONG CUFF)    |            | 1   |
| 17    | 213058   | VAC HOSE 650MM X Ø38MM                                    |            | 1   |
| 18    | 237718   | HOSE GUIDE  |            | 1   |
| 19    | 237382   | ACETAL HOSE CLIP MOULDING                                 |            | 1   |
| 20    | 901548   | 35MM X 250MM STRETCH HOSE (3:1) C/W ADJUSTABLE CUFF + CAP |            | 1   |
| 20a   | 900903   | HOSE CLOSURE REPLACEMENT KIT (35MM-38MM STRETCH HOSE)     | SPARE ITEM | 1   |
| 21    | 903542   | GRIT FILTER BASKET (RED)                                  |            | 1   |
| 22    | 291131   | M5 X 12MM LONG STAINLESS STEEL POZI PAN SEMS SCREW        |            | 2   |

# WIRING DIAGRAM

COMP. No  
904759

DRG. No  
DRW-24133

WIRING DIAGRAM.TWINTEC.2S.3WCR.230.56.TD.PLG

| ISSUE | REVISION                | DRAWN | APPD. | DATE     |
|-------|-------------------------|-------|-------|----------|
| A05   | NEW DRAWING (PROJ-0732) | AM    | MB    | 20/12/16 |

