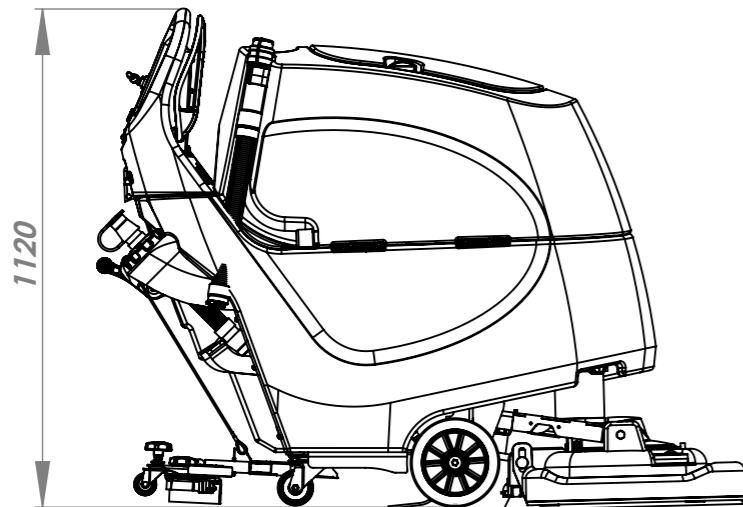
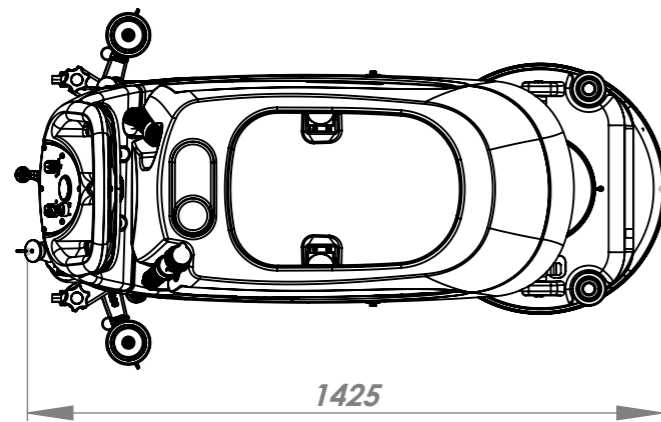
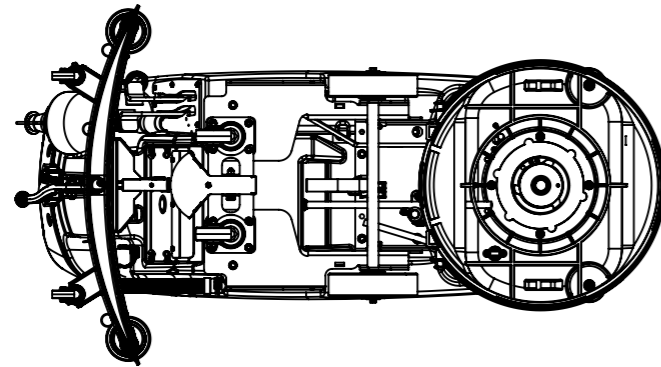


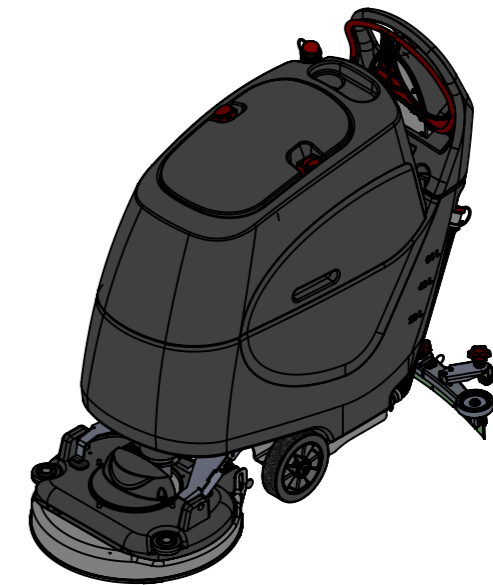
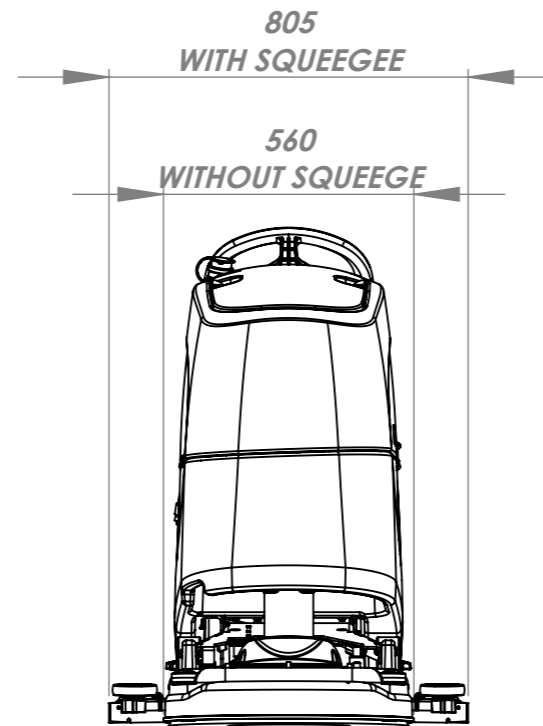
THIRD ANGLE PROJECTION



Provisional



BRUSH WEIGHT	24kg / 32kg 53lbs / 70.5lbs	GROSS WEIGHT (i.e. with liquid)	80Ah: 216kg 100Ah: 225kg 80Ah: 476.2lbs 100Ah: 496lbs
BRUSH PRESSURE	14.4 / 19 g/cm ² 0.204 / 0.270 lbs/in ²	NETT WEIGHT (i.e. NO liquid)	80Ah: 156kg 100Ah: 165kg 80Ah: 344lbs 100Ah: 363.7lbs
PAD PRESSURE	12.2 / 16 g/cm ² 0.173 / 0.227 lbs/in ²	POWER SOURCE	GELL BATTERY 24 VOLT (2x 12V) 80Ah / 100Ah
CLEANING AREA	970m ² /HOUR @ 2 kph 10440ft ² /HOUR @ 1.25 mph	RUN TIME (BATTERY LIFE)	2.25h MAX
BRUSH MOTOR POWER	300W	RECHARGING TIME	8 HRS 10A charger *option for external charger
BRUSH SPEED	100 rpm	INTERNAL CHARGER INPUT	350W
BRUSH DIA	550mm 22in	INTERNAL CHARGER OUTPUT	10A DC
PAD DIA	508mm 20in	BATTERY WEIGHT (TOTAL)	80Ah : 54.5kg 100Ah: 63.5kg 80Ah : 120lbs 100Ah: 140lbs
VAC MOTOR MAX. POWER	400W	HEIGHT	1120mm 44in
VAC MOTOR - SUCTION @ SQUEEGEE	120 mbar	LENGTH	1425mm 56in
VAC MOTOR - AIRFLOW @ SQUEEGEE	24.2 l/sec (6.4 US gal/sec)	WIDTH	560mm (805mm) 22in (31.7in)
WATER CAPACITY	60L 15.8 US gal	SQUEEGEE LENGTH	944mm 37.1in
WATER FLOW - AVERAGE	0-2 l/min 0-0.53 US gal/min	SOUND PRESSURE LEVEL	71.4 dB(A) ± 3dB(A)
DRIVE MOTOR POWER	N/A	VIBRATION LEVEL	HAV 0.57 m/s ² HAV 1.87 ft/s ²
DRIVE SPEED	N/A	TGB6055 (TGB1620)	
WATER INGRESS PROTECTION	IPX4		



Numatic INTERNATIONAL LTD MILLFIELD ROAD, CHARD, SOMERSET ENGLAND TA20 2GB

THE EXAMPLE SHOWN DETAILS THE METHOD USED FOR IDENTIFYING CRITICAL (INSPECTION) DIMENSIONS WHERE APPLICABLE

TOLERANCES:- LINEAR: 0 DECIMAL PLACES = +/- 1.0mm
1 DECIMAL PLACE = +/- 0.25mm
2 DECIMAL PLACES = +/- 0.05mm
ANGULAR:- +/- 0.5 DEGREE

All components must be ROHS compliant.

A06	NEW DRAWING	Internal Code:	DRAWN:	APPD:	DATE:	TOOL NUMBER:	-	TITLE:-	TGB6055 TECHNICAL SPECIFICATION	
REVISION:	CHANGE DETAIL:	MS5	PB	-	-	WEIGHT:	-	DIMENSIONS IN MILLIMETERS	MATERIAL:-	ITEM No(s):-
1	ST_Numatic_A3.sldprt 20030224	3	4	5	6	PRINT SIZE	A3	NOT TO SCALE	FINISH:-	DRG No:-
										DRW-21457

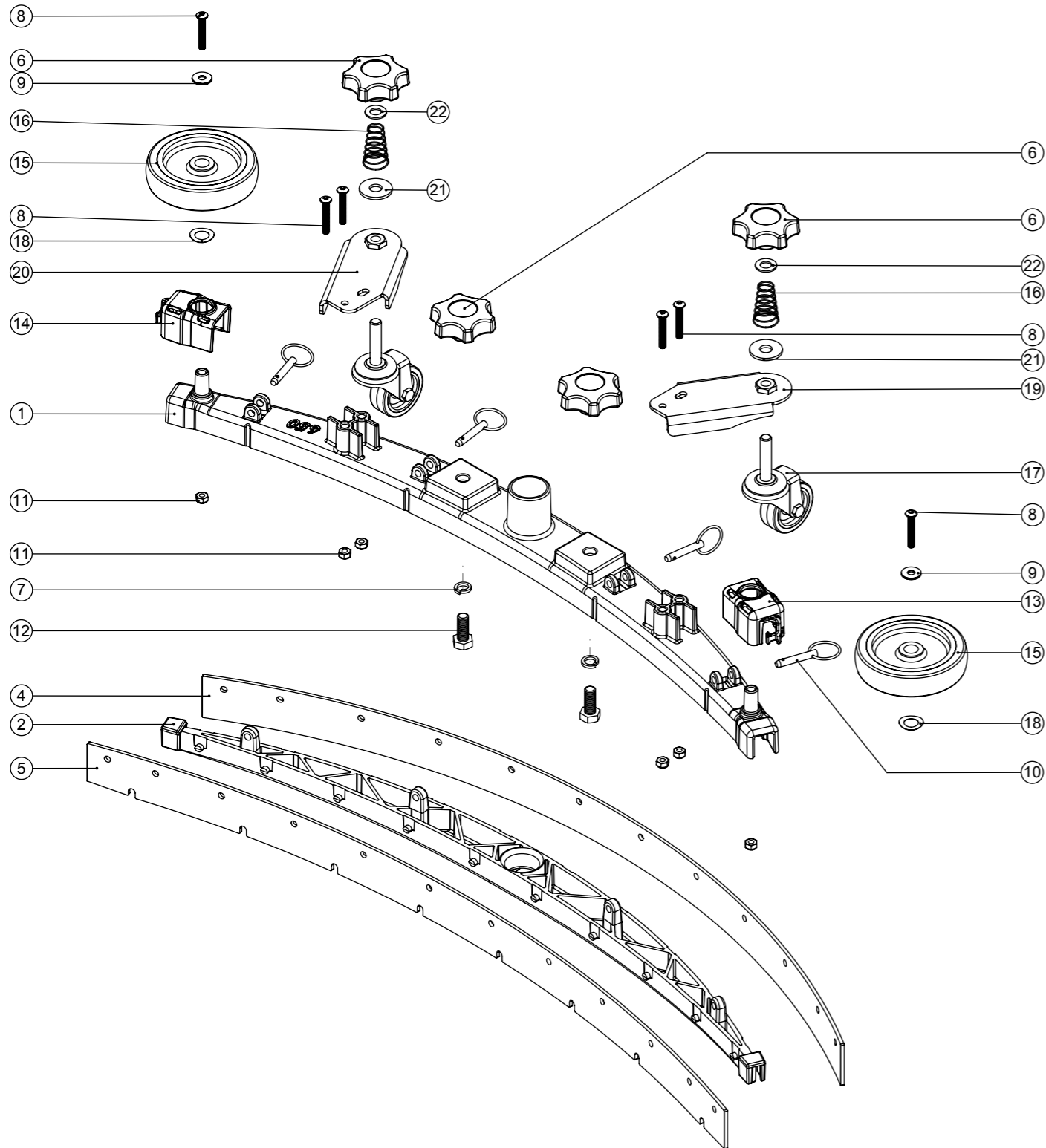
THIS DRAWING IS COPYRIGHT AND IS THE PROPERTY OF NUMATIC INTERNATIONAL LTD. AND MUST NOT BE USED WITHOUT THEIR KNOWLEDGE NOR COMMUNICATED TO ANY PERSON OR COMPANY.

Numatic International Spare Parts

Model No: 650 TWINTEC ALUMINIUM FLOOR TOOL (38MM HOSE, RED TRIM, SERILOR BLADES)

Internal Code: 903347
 DRAWING: DRW-22621 ISS:A05
 MS5 24/10/2016

NB: FOR WIRING SEE DRAWING: N/A



Numatic International Spare Parts

Model No: 650 TWINTEC ALUMINIUM FLOOR TOOL (38MM HOSE, RED TRIM, SERILOR BLADES)

Provisional

ITEM:	PART No:	Description	Qty
1	208198	(650MM SCRUB WIDTH) ALUMINIUM SQUEEGEE CASTING (38MM HOSE FITTING)	1
2	903345	(650MM SCRUB WIDTH) RED BLADE HOLDER MOULDING (SLOPING PROFILE) (32MM & 38MM HOSE FITTING)	1
	900518	650 REPLACEMENT SERILOR GREEN POLYURETHANE BLADES SET	
4	208970	(650MM SCRUB WIDTH) REPLACEMENT (4.0MM / 35-45-35 SHORE A) REAR LAMINATED SERILOR POLY/BLADE (847MM LONG)	1
5	208967	(650MM SCRUB WIDTH) REPLACEMENT (3.2MM / 40 SHORE A) FRONT MONOLAYER SERILOR POLY/BLADE (819MM LONG)	1
6	903281	M10 LOBE KNOB (RED)	4
7	219899	M10 SINGLE COIL STAINLESS STEEL WASHER	2
8	219933	M6 X 35MM SOCKET BUTTON HEAD BOLT STAINLESS STEEL	6
9	219647	M6 FORM G STAINLESS STEEL WASHER	2
10	206953	DETENT PINS	4
11	219642	M6 STAINLESS STEEL NYLON INSERT NUT	6
12	219909	M10 X 25MM LONG HEXAGONAL STAINLESS STEEL SCREW	2
13	237322	RIGHT HAND FLOOR TOOL CLIP MOULDING	1
14	237323	LEFT HAND FLOOR TOOL CLIP MOULDING	1
15	208796	4 INCH WHEEL	2
16	229175	CONICAL SPRING	2
17	208497	50MM DIAMETER GREY TPR TYRED SWIVEL CASTORS C/W M10 X 45 SWAGED STEM.	2
18	219891	13MM WAVEY WASHER	2
19	304523	ADJUSTABLE FLOOR TOOL CASTOR PLATE RHS WELD ASSY	1
20	304522	ADJUSTABLE FLOOR TOOL CASTOR PLATE LHS WELD ASSY	1
21	291124	M10 PENNY WASHER STAINLESS STEEL	2
22	219903	M10 FORM A STAINLESS STEEL WASHER	2

Numatic International Spare Parts

Model No: TGB6055 EXPLODED VIEW : BRUSH DECK

Internal Code: -
 PRO DRAWING: DRW-21591 ISS:A11
 21/02/2017

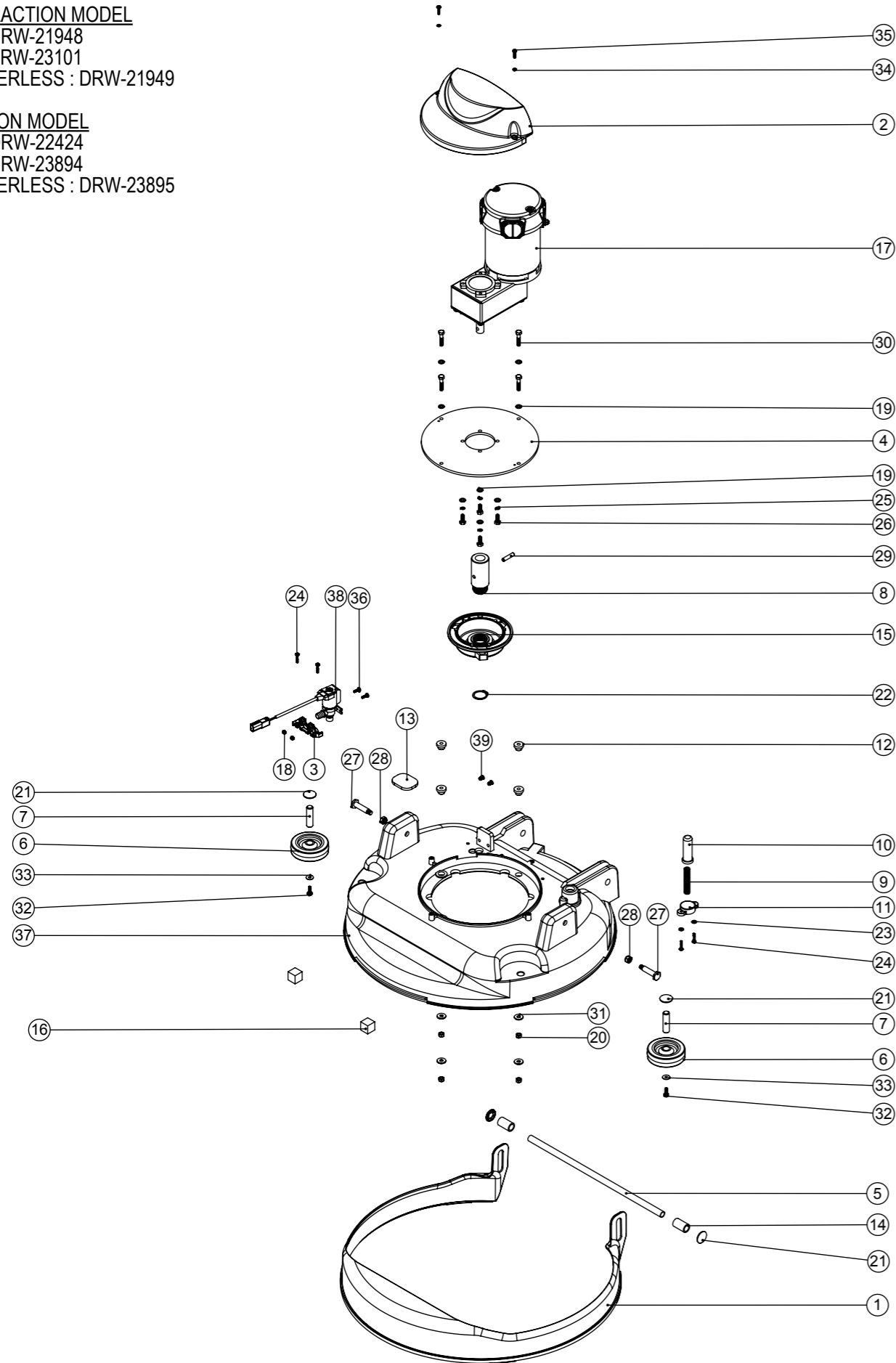
NB: FOR WIRING SEE DRAWING:

NON-TRACTION MODEL

230V : DRW-21948
 120V : DRW-23101
 CHARGERLESS : DRW-21949

TRACTION MODEL

230V : DRW-22424
 120V : DRW-23894
 CHARGERLESS : DRW-23895



Numatic International Spare Parts

Model No: TGB6055 EXPLODED VIEW : BRUSH DECK

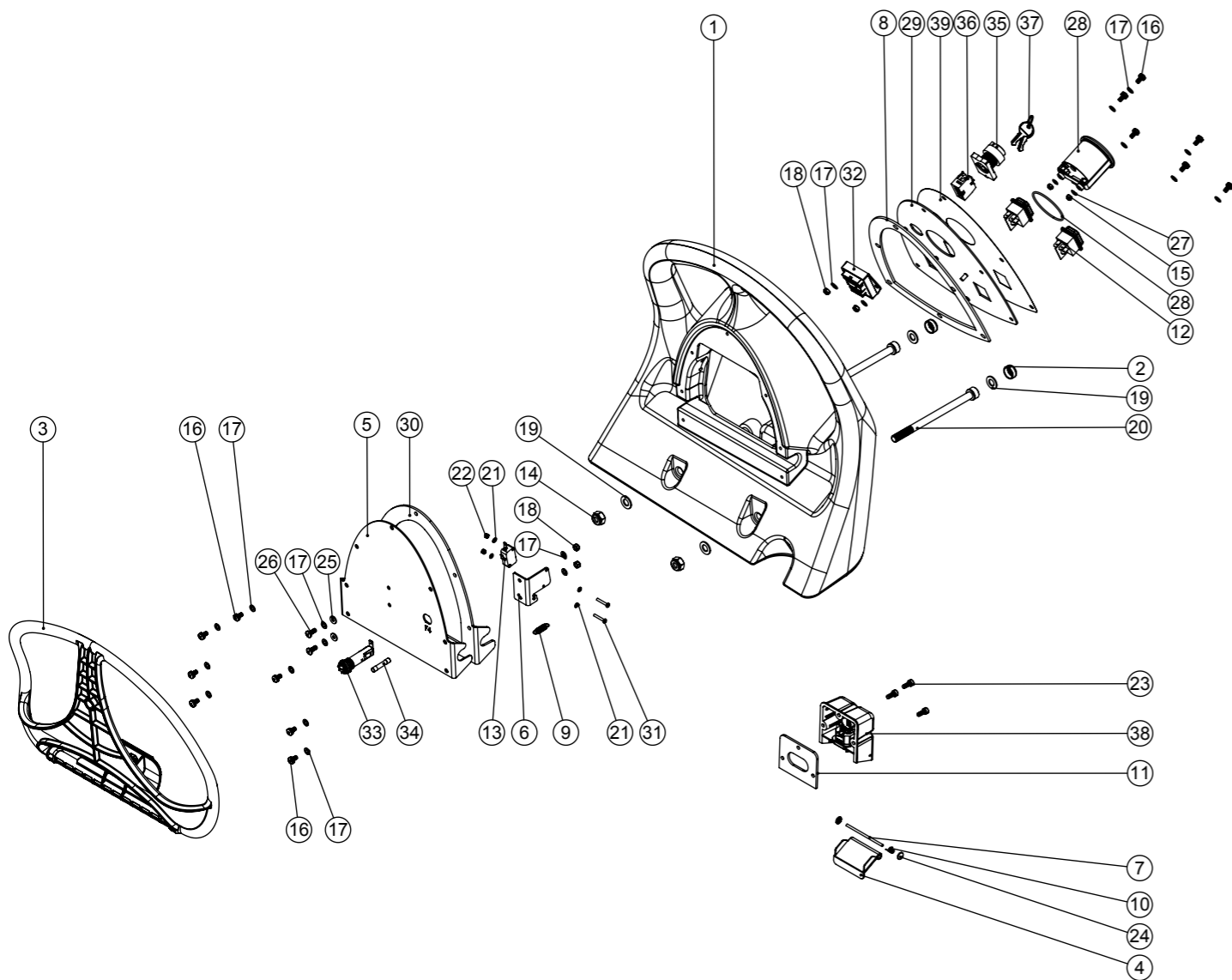
ITEM:	PART No:	Description	Comments	QTY
1	229562	SPLASH SKIRT MOULDING		1
2	237380	AMER MOTOR COVER		1
3	902556	SOLENOID MOUNT MOULDING		1
4	404166	TTB4045/4055 AMER MOTOR ADAPTOR PLATE PAINT SILVER GREY		1
5	391439	1/2 INCH DIAMETER X 18G STAINLESS STEEL TUBE (0.375)		1
6	204068	3 INCH GREY WHEEL		2
7	206013	BUFFER WHEEL PIN		2
8	208727	DRIVE SHAFT		1
9	219692	COMPRESSION SPRING		1
10	229128	PLUNGER		1
11	223242	PLUNGER MOUNTING PLATE MOULDING		1
12	229285	MOTOR MOUNTING SPACER		4
13	202098	FOOT PEDAL PAD		1
14	208769	NATUARL NYLON SPACER (12.8x18x30)		2
15	230285	MODIFIED CHUCK (CRO)		1
16	902352	FOAM SPACER 20MM		2
17	205245	AMER 100RPM MOTOR	230222 CARBON BRUSHES (SET)	1
18	219687	M4 STAINLESS STEEL NYLON INSERT NUT		2
19	219870	M6 FORM A WASHER STAINLESS STEEL		8
20	219642	M6 STAINLESS STEEL NYLON INSERT NUT		4
21	204021	12.7MM STAINLESS STEEL HUB CAP		4
22	230048	26MM EXTERNAL CIRCLIP		1
23	219355	M5 FORM A STAINLESS STEEL WASHER		2
24	219568	NO8.3/4 INCH LG.POZI-PAN.SCREW.STAINLESS STEEL.PLASTITE		4
25	219718	WASHER.M6.SPRING.STAINLESS STEEL		4
26	219719	M6 X 16MM LONG HEXAGONAL STAINLESS STEEL HEAD BOLT		4
27	206236	PIVOT PIN		2
28	219857	M8 NYLON INSERT HALF NUT		2
29	291079	6MM X 30MM STAINLESS STEEL ROLL PIN		1
30	291022	M6 X 30MM LONG STAINLESS STEEL HEXAGONAL HEAD BOLT		4
31	219647	M6 FORM G STAINLESS STEEL WASHER		4
32	291132	M5 X 16MM LONG STAINLESS STEEL POZI PAN SEMS SCREW		2
33	219644	M5 FORM G STAINLESS STEEL WASHER		2
34	291145	M4 SHAKEPROOF WASHER STAINLESS STEEL		2
35	219862	M4 X 16MM LONG POZI PAN STAINLESS STEEL SCREW		2
36	219890	M4 X 12MM LONG POZI PAN STAINLESS STEEL SCREW		2
37	304445	6055 BASE MOULDING		1
38	902949	TERMINATED SOLONOID CABLE.BLACK.125.0M5.2.24		1
39	219009	M4 BRASS TAPPEX INSERT		2

Numatic International Spare Parts

Model No: TGB6055 EXPLODED VIEW : HANDLE

NB: FOR WIRING SEE DRAWING:
230V : DRW-21948
120v : DRW-23101

Internal Code: -
MS5 DRAWING: DRW-21589 ISS:A12
24/10/2016



Numatic International Spare Parts

Model No: TGB6055 EXPLODED VIEW : HANDLE

ITEM:	PART No:	Description	Comments	QTY
1	237113	HANDLE MOULDING		1
2	237632	SHOULDER BOLT COVER		2
3	902325	RED HANDLE TRIGGER MOULDING		1
4	227781	FLAP MOULDING		1
5	902263	HANDLE BACK PLATE ETB6055 PAINTED SILVER		1
6	902251	HANDLE MICRO SWITCH BRACKET PAINTED SILVER		1
7	390979	72MM LONG X 3MM DIAMETER STAINLESS STEEL BAR		1
8	208336	CONTROL PANEL PUNCHED GASKET		1
9	208356	TRIGGER SPRING		1
10	219819	TORSION SPRING		1
11	202105	SOCKET COVER SEALING GASKET		1
12	902235	SWITCH DPST RED ILLUMINATED WITH MEMBRANE 24V		2
13	208391	SNAP ACTION SWITCH		1
14	219897	M10 STAINLESS STEEL NYLON INSERT NUT		2
15	219687	M4 STAINLESS STEEL NYLON INSERT NUT		2
16	291135	M5 X 10MM LONG STAINLESS STEEL POZI PAN SEMS SCREW		13
17	219355	M5 FORM A STAINLESS STEEL WASHER		19
18	219633	M5 STAINLESS STEEL NYLON INSERT NUT		4
19	219903	M10 FORM A STAINLESS STEEL WASHER		4
20	902351	M10 X 150MM LONG SOCKET CAP SCREW STAINLESS STEEL		2
21	219501	M3 FORM A STAINLESS STEEL WASHER		4
22	291154	M3 NYLON INSERT NUT STAINLESS STEEL		2
23	291007	M5 X 12MM LONG STAINLESS STEEL SOCKET CAP SCREW		3
24	219832	3MM DIAMETER STARLOCK		2
25	219462	RUBBER WASHER		2
26	219740	M5 X 12MM LONG STAINLESS STEEL POZI PAN SCREW		2
27	219688	M4 FORM A STAINLESS STEEL WASHER		2
28	902532	BATTERY DISCHARGE INDICATOR + HOUR METER 24V	O-RING INCLUDED	1
29	903053	TGB6055 CONTROL PANEL ASSEMBLY PAINTED SILVER		1
30	903062	HANDLE BACK PLATE GASKET		1
31	291155	M3 X 20MM LONG POZI PAN SCREW STAINLESS STEEL		2
32	903031	TERMINAL BLOCK ASSEMBLY		1
33	903032	BULGIN PANEL MOUNT FUSEHOLDER		1
34	903066	FUSE 2.5A (6.3x32)		1
35	208138	KEY SWITCH (2 POSITION)		1
36	208137	KEY SWITCH ACTUATOR BLOCK		1
37	208167	SPARE SET OF KEYS (2 KEYS)	SPARE ITEM	1
38	904030	240V EMI FILTER WITH SOCKET COVER ASSEMBLY (PROCESSED)	240V VERSION	1
	904031	120V EMI FILTER WITH SOCKET COVER ASSEMBLY (PROCESSED)	120V VERSION	1
39	904765	TGB6055 (TGB1620) CONTROL PANEL OVERLAY		1

Numatic International Spare Parts

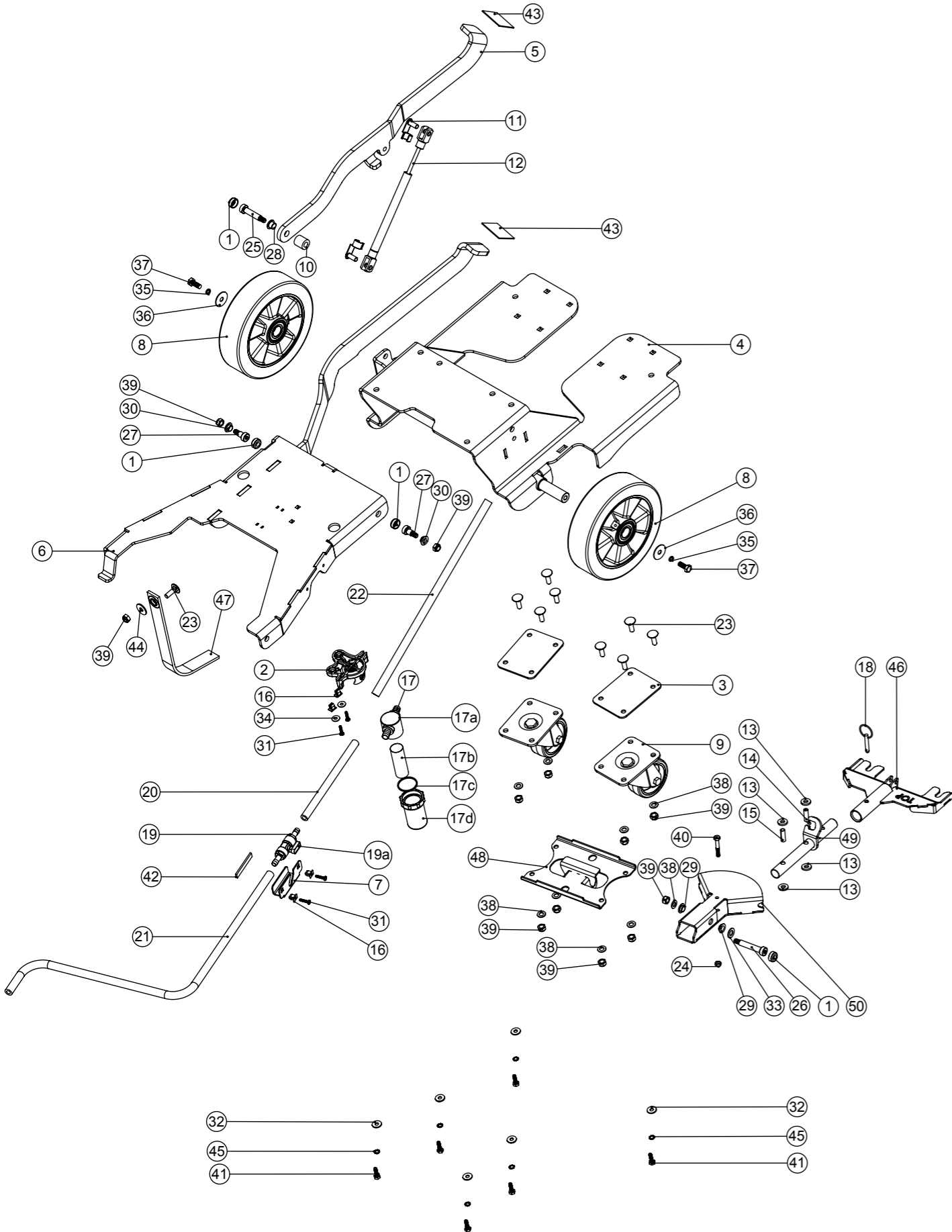
Model No: TGB6055 EXPLODED VIEW : CHASSIS

Internal Code: -

MS4

DRAWING: DRW-21593 ISS:A12
24/10/2016

NB: FOR WIRING SEE DRAWING: N/A



Numatic International Spare Parts

Model No: TGB6055 EXPLODED VIEW : CHASSIS

Provisional

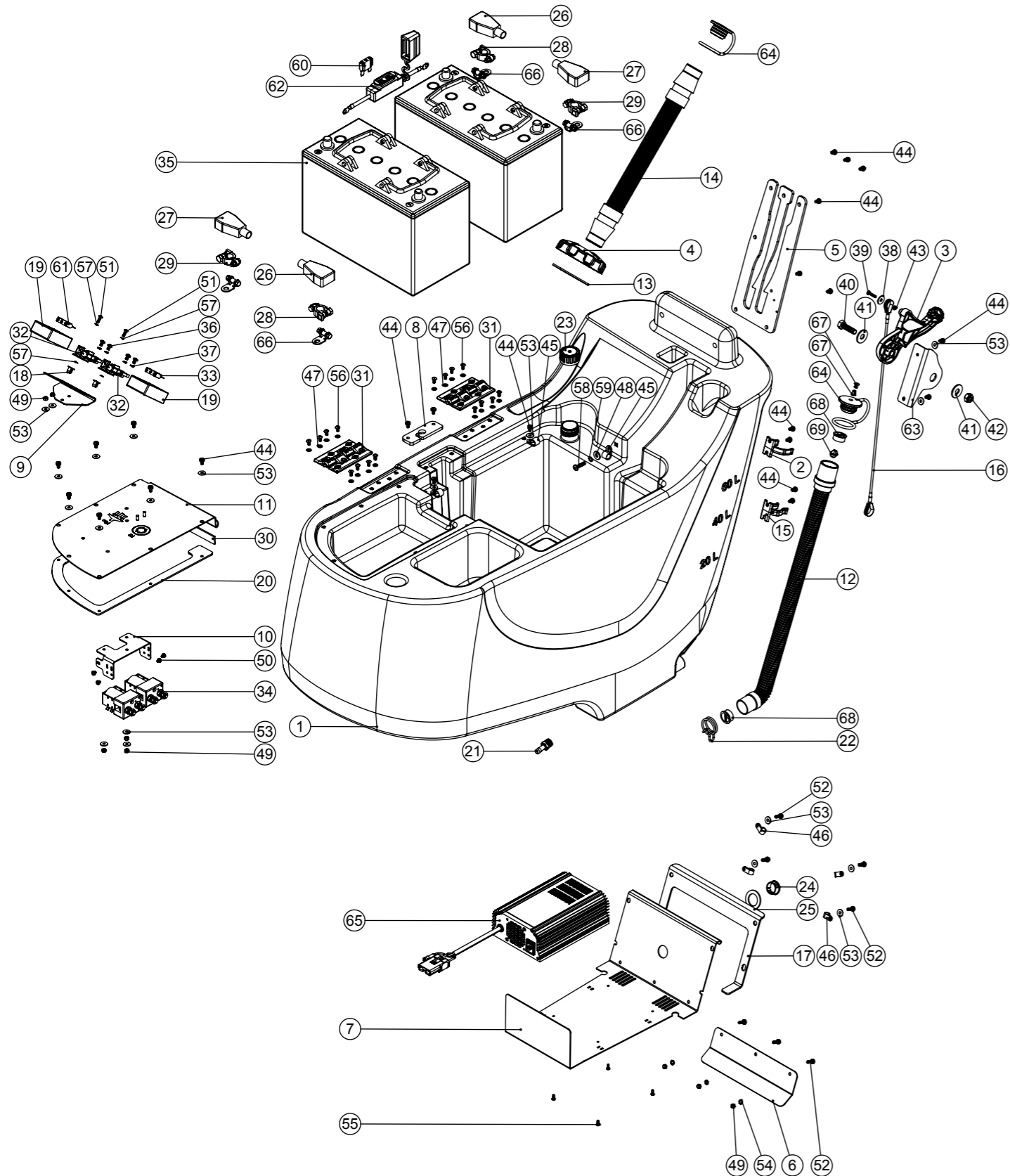
ITEM:	PART No:	Description	Comments	QTY
1	237632	SHOULDER BOLT COVER		4
2	901006	FILTER MOUNTING BRACKET		1
3	329581	CASTOR ADAPTOR SPACER		2
4	902266	ETB6055 CHASSIS WELD ASSEMBLY PAINTED SILVER		1
5	404131	TTV4555 EXTRA LOAD PEDAL Z/PL		1
6	902268	ETB6055 DECK LIFTING LINK Z/PL		1
7	902262	TAP BRACKET PAINTED SILVER		1
8	204120	WICKE 200 X 50MM ALU WHEEL		2
9	204116	HEAVY DUTY CASTOR. BLUE TYRE		2
10	208350	NYLON SPACER I/D 10.2MM X O/D 20.0MM X LENGTH 21.0MM		1
11	208634	GAS RAM CLEVIS CLIP		2
12	208623	280N GAS RAM		1
13	206964	SLIDE NYLON SPACER		4
14	206963	VERTICAL NYLON SPACER		1
15	206954	SPIRO SPACER		1
16	900986	NYLON GROMMET NUT (PLASTIC INSERT TO SUIT No 8 PLASTITE SCREW)		4
17	208888	EXTENDED STRAINER		1
17a	208827	STRAINER BLACK TOP	SPARE PART	1
17b	208889	EXTENDED STRAINER 50 MESH SCREEN	SPARE PART	1
17c	208830	STRAINER GASKET	SPARE PART	1
17d	208890	EXTENDED STRAINER CLEAR BOWL	SPARE PART	1
18	206953	DETENT PINS		1
19	208761	10MM HOSE TAIL TO 10MM HOSE TAIL BALL VALVE ASSEMBLY		1
19a	901544	TAP HANDLE C/W COVER AND M3X6MM SCREW (SPARE ITEM)	SPARE PART	1
20	303713	SILICONE TUBE (210MM LONG)		1
21	391216	SILICON TUBE 8MM I/D X 3.2MM WALL SECTION (CUT 600MM)		1
22	304443	SILICON TUBE 8MM I/D X 3.2MM WALL SECTION (CUT 420MM)		1
23	902010	M8 X 25 COACH BOLT S/S		9
24	219642	M6 STAINLESS STEEL NYLON INSERT NUT		1
25	208355	M8 X 10 X 40MM LONG HEX SOCKET SHOULDER BOLT		1
26	208333	M8 X 10 X 50MM LONG HEX SOCKET SHOULDER BOLT		1
27	208313	M8 X 10 X 12MM LONG HEX SOCKET SHOULDER BOLT		2
28	208331	IGUS BEARING (GFM 101209)		1
29	208312	IGUS BEARING (GFM 101205)		2
30	208330	IGUS BEARING (GFM 101206)		2
31	219568	NO8.3/4 INCH LG.POZI-PAN.SCREW.STAINLESS STEEL.PLASTITE		4
32	219647	M6 FORM G STAINLESS STEEL WASHER		6
33	219903	M10 FORM A STAINLESS STEEL WASHER		1
34	219644	M5 FORM G STAINLESS STEEL WASHER		2
35	219898	M8 SINGLE COIL STAINLESS STEEL WASHER		2
36	219877	M8 X 30 STAINLESS STEEL WASHER		2
37	219717	M8 X 20MM LONG HEXAGONAL STAINLESS STEEL BOLT		2
38	219578	M8 FORM A STAINLESS STEEL WASHER		9
39	219639	M8 STAINLESS STEEL NYLON INSERT NUT		12
40	291125	M6 X 40 LONG HEX BOLT STAINLESS STEEL		1
41	219976	M6 X 20MM LONG HEXANGONAL HEAD SET SCREW		6
42	902760	3MM THICK X 9MM WIDE INSEAL (212052 x 60MM LONG)		1
43	903064	FOOT PEDAL PAD (RED)	903063 CUT TO LENGHT	2
44	219716	M8 FORM G STAINLESS STEEL WASHER		1
45	902353	M6 EXTERNAL SHAKEPROOF WASHER STAINLESS STEEL		6
46	304466	FLOOR TOOL BRACKET ASSEMBLY (TT/TTB4045/4055)		1
47	903323	ANTI-STATIC STRAP (CUT TO LENGHT: 320MM LONG)		1
48	904960	FLOOR TOOL LIFTING PIVOT BRACKET WELD ASSY PAINTED SILVER		1
49	905730	TGB6055 FLOOR TOOL PIVOT TUBE ASSEMBLY		1
50	905728	FLOOR TOOL LIFTING PLATE WELD ASSEMBLY (3MM M/S) Z/PL		1

Numatic International Spare Parts

Model No: TGB6055 EXPLODED VIEW : BOTTOM TANK

NB: FOR WIRING SEE DRAWING: DRW-21948

Internal Code: -
MS5 DRAWING: DRW-21592 ISS:A14



Numatic International Spare Parts

Model No: TGB6055 EXPLODED VIEW : BOTTOM TANK

ITEM:	PART No:	Description	Comments	QTY
1	902160	ETB6055 GREY BOTTOM TANK MOULDING (EP)	WITHOUT LOGO	1
	902159	ETB6055 GREY BOTTOM TANK MOULDING	WITH LOGO	1
2	237754	35-38MM HOSE CLIP		1
3	902324	RED SQUEEGEE LIFT HANDLE		1
4	237174	FILLER CAP WITH FILLER HOSE HOLE		1
5	404142	TTV4555 FOOT PEDAL GUIDE PLATE - Z/P/L		1
6	902257	CHARGER SPLASH SKIRT PAINTED SILVER		1
7	902258	ETB6055 NORD CHARGER PLATE PAINTED SILVER		1
8	902238	RETAINING PLATE		1
9	902254	FUSE BRACKET PAINTED SILVER		1
10	902253	CONTACTOR BRACKET PAINTED SILVER		1
11	902269	ELECTRONICS PLATE ASSY PAINTED SILVER		1
12	213025	DUMP HOSE		1
13	208564	FILLER CAP SEALING RING		1
14	206842	420MM LONG BLACK STRETCH HOSE C/W CUFFS		1
15	901916	28mm HOSE CLIP		1
16	208996	LIFTING WIRE TTV4555 / TTB6055		1
17	208337	CHARGER PLATE PUNCHED GASKET		1
18	900986	NYLON GROMMET NUT (PLASTIC INSERT TO SUIT No 8 PLASTITE SCREW)		2
19	208802	MAXI-FUSE HOLDER COVER		2
20	902066	PUMP PLATE GASKET (4555/6055)		1
21	219389	3/8 BSPP MALE C/W UNDERCUT & O RING TO 10.5MM HOSETAIL		1
22	902133	SPRING WIRE CLAMP (YDNAC-Y8010356)		1
23	208106	BOTTLE CAP		1
24	206314	WINDOW PLUG		1
25	902328	WINDOW PLUG GASKET		1
26	208936	BLACK BATTERY TERMINAL COVER (415N8V14)		2
27	208935	RED BATTERY TERMINAL COVER (415N8V02)		2
28	220455	BATTERY TERMINAL CONVERTOR	80Ah VERSION	2
29	220454	POSITIVE BATTERY TERMINAL CONVERTER	80Ah VERSION	2
30	902387	3MM X 19MM INSEAL TYPE 3259 (190MM)		1
31	303954	PLASTIC HINGE ASSEMBLY		2
32	230102	FUSE HOLDER RATED AT 60 AMPS		2
33	230104	30 AMP MAXI FUSE		1
34	230111	CONTACTOR		2
35	220867	12V TRACTION BLOCK BATTERY	80Ah VERSION	2
	205112	100 AMP/HOUR REPLACEMENT BATTERY (C/W PACKAGING FOR 230138 BATTERY)	100Ah VERSION	2
36	219864	M5 X 8MM LONG POZI-PAN SCREW Z/P/L		4
37	219861	M5 SINGLE COIL STAINLESS STEEL WASHER		4
38	291118	M5 STAINLESS STEEL WASHER 19MM OD		1
39	219686	M4 X 20MM LONG STAINLESS STEEL POZI PAN MACHINE SCREW		1
40	219895	M10 X 35MM LONG HEXAGONAL STAINLESS STEEL SCREW		1
41	291124	M10 PENNY WASHER STAINLESS STEEL		2
42	219897	M10 STAINLESS STEEL NYLON INSERT NUT		1
43	219687	M4 STAINLESS STEEL NYLON INSERT NUT		1
44	291135	M5 X 10MM LONG STAINLESS STEEL POZI PAN SEMS SCREW		23
45	219465	P-CLIP		3
46	219393	P CLIP		4
47	219355	M5 FORM A STAINLESS STEEL WASHER		16
48	219647	M6 FORM G STAINLESS STEEL WASHER		1
49	219633	M5 STAINLESS STEEL NYLON INSERT NUT		8
50	219566	M4 X 6MM LONG POZI PAN SCREW		4
51	219569	NO8. 1/2 INCH. LG.POZI-PAN.SCREW.STAINLESS STEEL.PLASTITE		2
52	291132	M5 X 16MM LONG STAINLESS STEEL POZI PAN SEMS SCREW		7
53	219644	M5 FORM G STAINLESS STEEL WASHER		20
54	291020	M5 STAINLESS STEEL EXTERNAL SHAKEPROOF LOCK WASHER		3
55	902533	No6 X 3/8 INCH LONG POZI PAN SELF TAP SCREW STAINLESS STEEL		4
56	291004	M5 X 10MM LONG STAINLESS STEEL BUTTON HEAD SCREW		16
57	291145	M4 SHAKEPROOF WASHER STAINLESS STEEL		4
58	902232	M6 X 25MM LONG POZI PAN SCREW STAINLESS STEEL		1
59	902353	M6 EXTERNAL SHAKEPROOF WASHER STAINLESS STEEL		1
60	221047	40 AMP MAXI FUSE		1
61	221091	20 AMP MAXI FUSE		1
62	903175	WATERPROOF BATTERY FUSE HOLDER.210.RING.RING	230V	1
63	903270	FLOOR TOOL HANDLE BRACKET Z/P/L	120V	1
64	903341	32MM HOSE CAP RED (C/W 8MM HOLE)		2
65	902988	230V/24V/10 AMP HF NORD CHARGER (PROCESSED 185MM LONG WIRING)	230V	1
	903735	120V/24V/10 AMP HF NORD CHARGER (PROCESSED 185MM LONG WIRING)	120V	1
66	902666	BATTERY CONNECTOR (M6 - M10)	100Ah VERSION	4
67	904403	BARBED RIVET BLACK		2
68	904108	FLOAT STOP MOULDING		2
69	904109	FLOAT MOULDING		1

Numatic International Spare Parts

Model No: TGB6055 EXPLODED VIEW : TOP TANK

Internal Code: -
 PP DRAWING: DRW-21584 ISS:A15
 24/10/2016

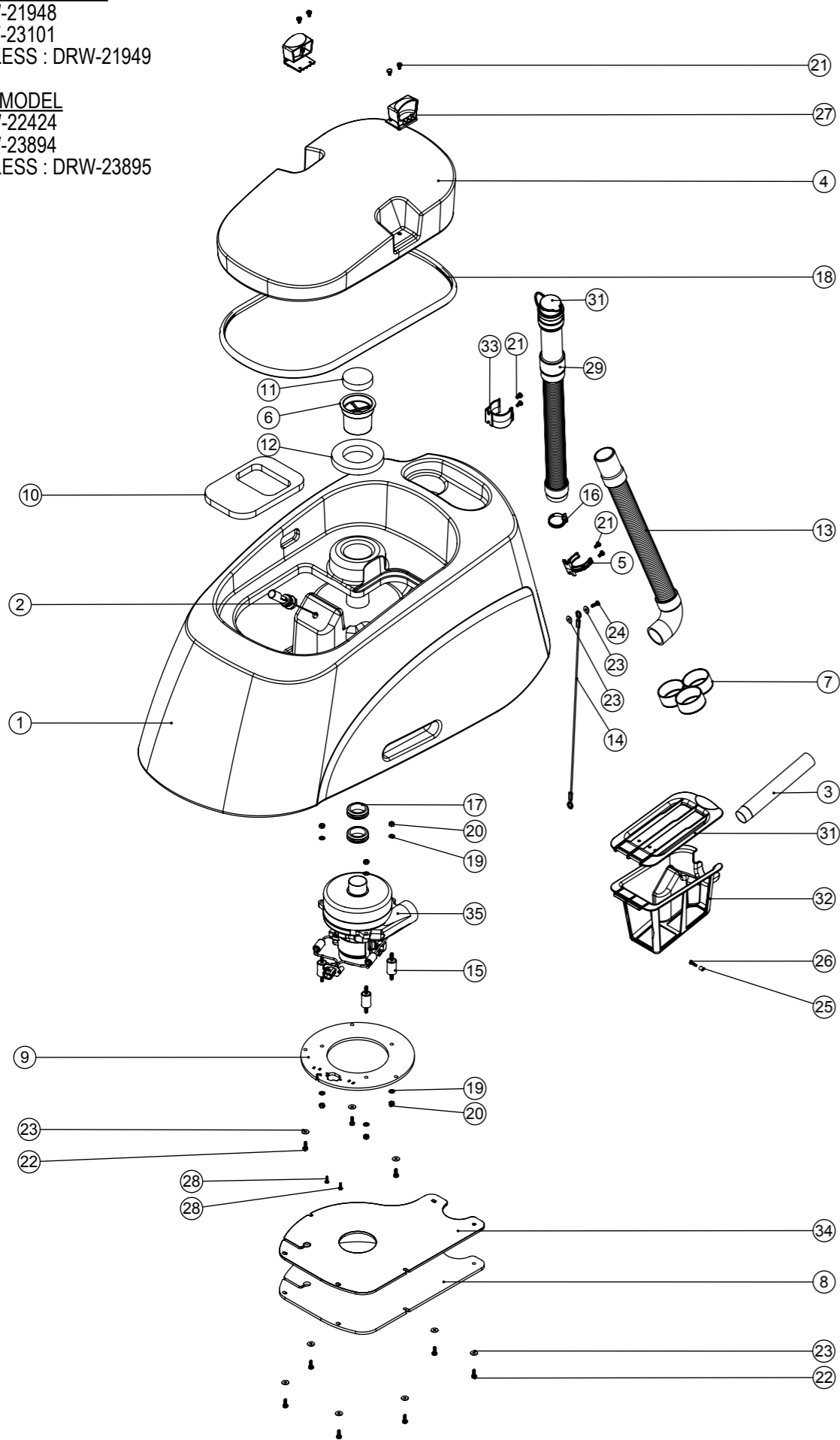
NB: FOR WIRING SEE DRAWING:

NON-TRACTION MODEL

230V : DRW-21948
 120V : DRW-23101
 CHARGERLESS : DRW-21949

TRACTION MODEL

230V : DRW-22424
 120V : DRW-23894
 CHARGERLESS : DRW-23895



Numatic International Spare Parts

Model No: TGB6055 EXPLODED VIEW : TOP TANK

ITEM:	PART No:	Description	Comments	QTY
1	902295	TTV4555/TTB6055 GREY TOP TANK MOULDING C/W FLOAT SWITCH & TUBE		1
2	902234	FLOAT SWITCH (N.C.)	903038 SPARE END TIP	1
3	304386	PROCESSED ALUMINIUM WELDED TUBE CUT TO LENGTH (210MM)C6		1
4	902323	TTV4555 GREY SEPERATOR HOOD MOULDING		1
5	237754	35-38MM HOSE CLIP		1
6	237688	FOAM FILTER BODY		1
7	237718	HOSE GUIDE		1
8	902237	VAC MOTOR BOTTOM PLATE (2 STAGE)		1
9	902236	TANGENTIAL VAC MOTOR BRACKET (PP)		1
10	208950	FLOAT PAD		1
11	208947	INNER FOAM FILTER/OUTER FOAM FILTER		1
12	208947	INNER FOAM FILTER/OUTER FOAM FILTER		1
13	280021	35MM X 1000MM LONG 3:1 STRETCH HOSE (SHORT & LONG CUFF)		1
14	208204	495MM LONG LIFTING LINK WIRE		1
15	208334	30MM x 20MM ANTI VIBRATION MOUNT		3
16	206209	A.B.A HOSE CLIP		1
17	208144	38MM GROMMET X 6MM PANEL THICKNESS		2
18	391433	TTV4555 SEPARATOR SEALING GASKET CUT TO LENGTH		1
19	219870	M6 FORM A WASHER STAINLESS STEEL		6
20	219642	M6 STAINLESS STEEL NYLON INSERT NUT		6
21	291135	M5 X 10MM LONG STAINLESS STEEL POZI PAN SEMS SCREW		8
22	291132	M5 X 16MM LONG STAINLESS STEEL POZI PAN SEMS SCREW		9
23	219644	M5 FORM G STAINLESS STEEL WASHER		11
24	219547	M5 X 16MM LONG POZI PAN STAINLESS STEEL SCREW		1
25	219508	SPIROL SPACER		1
26	299021	No8 X 3/4 INCH LONG SELF TAP POZI PAN SCREW		1
27	902919	CLIP MOULDING (RED)		2
28	219569	NO8.1/2 INCH. LG.POZI-PAN.SCREW.STAINLESS STEEL.PLASTITE		2
29	901548	35MM X 250MM STRETCH HOSE (3:1) C/W ADJUSTABLE CUFF + CAP		1
30	900903	HOSE CLOSURE REPLACEMENT KIT (35MM-38MM STRETCH HOSE)	SPARE PART	1
31	903285	FILTER BASKET LID (RED)		1
32	903283	FILTER BASKET (RED)		1
33	237382	ACETAL HOSE CLIP MOULDING		1
34	903628	VAC MOTOR BOTTOM PLATE LINER		1
35	903716	24V TANGENTIAL DISCHARGE 2-STAGE VAC MOTOR & PLUG ASSEMBLY		1

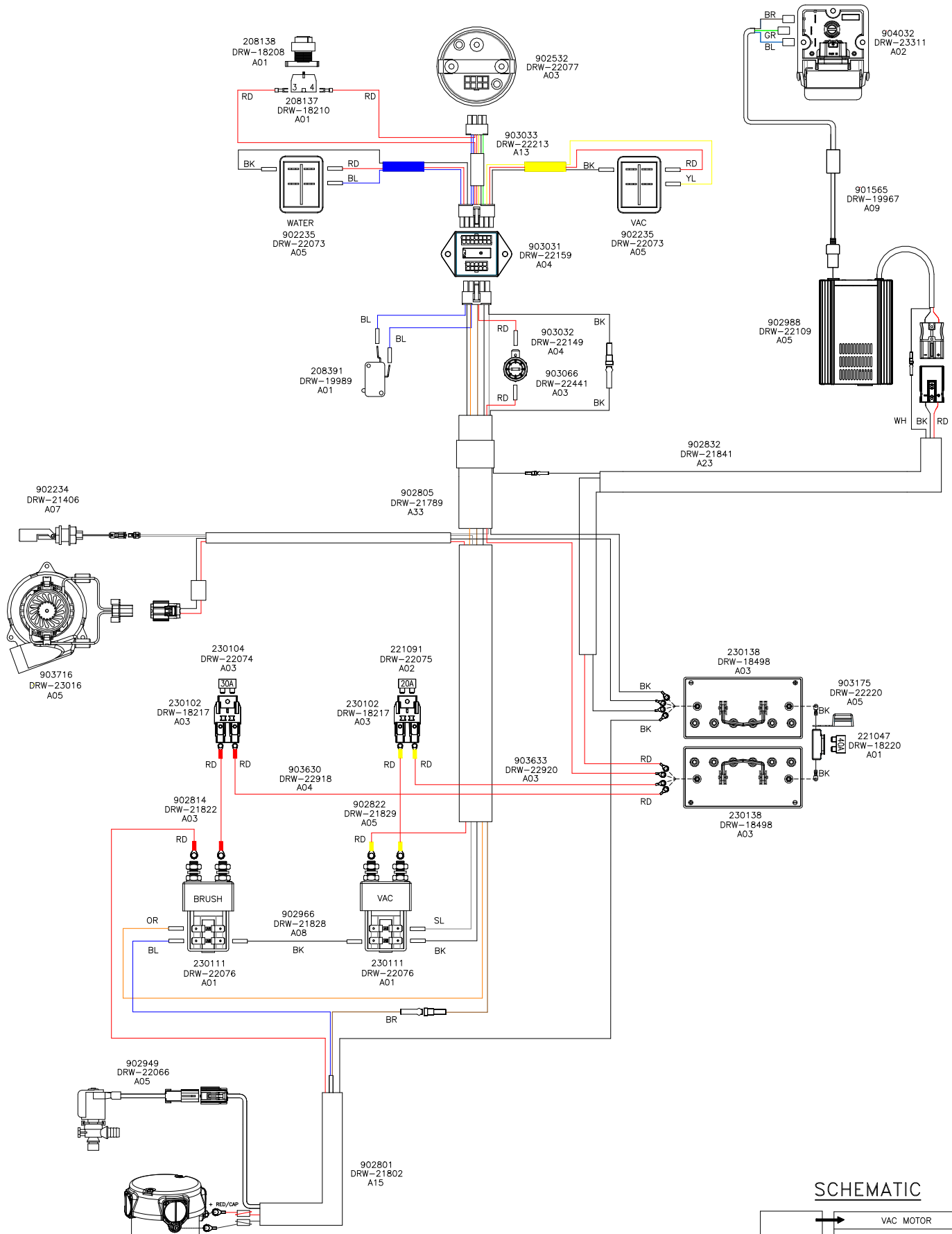
WIRING DIAGRAM

COMP. No
903522

DRG. No
DRW-21948

WIRING DIAGRAM.TWINTEC.1S.3WCR.230.50.NT.PLG

ISSUE	REVISION	DRAWN	APPD.	DATE
A13	NEW DRAWING PROJ-0318	AM	MB	07/10/16



KEY: WIRE COLOURS

BK	- BLACK
BL	- BLUE
BR	- BROWN
GR	- GREEN
CY	- GREEN/YELLOW
OR	- ORANGE
RD	- RED
SL	- SLATE
WH	- WHITE
YL	- YELLOW
P	- PURPLE

