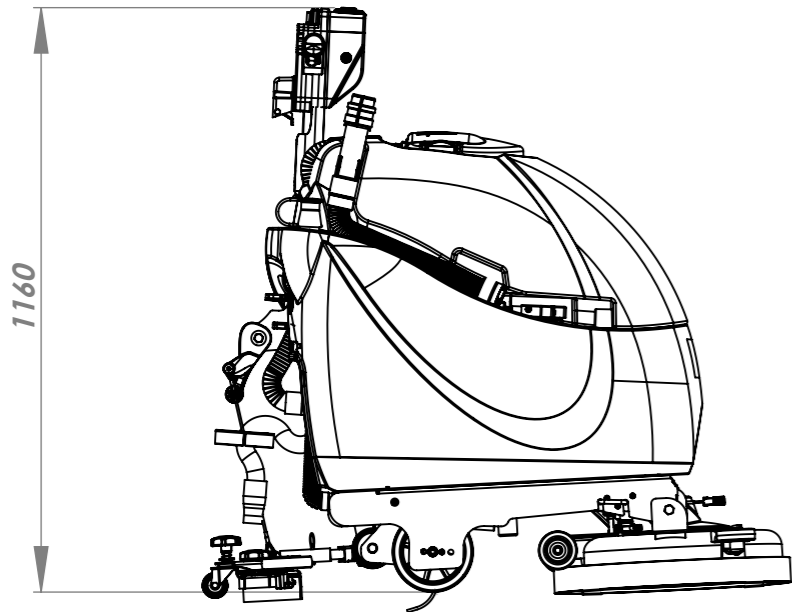
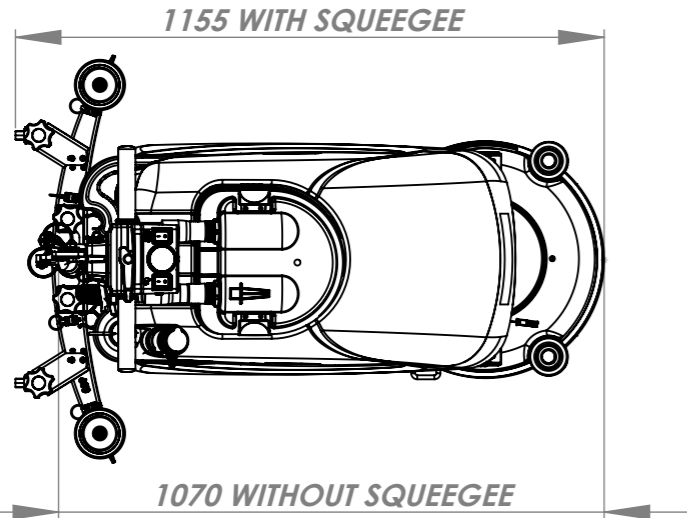
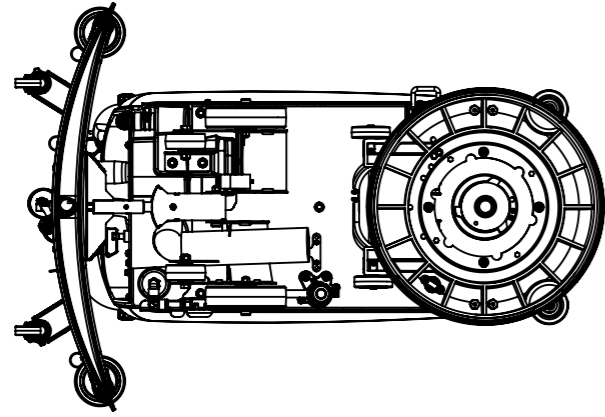
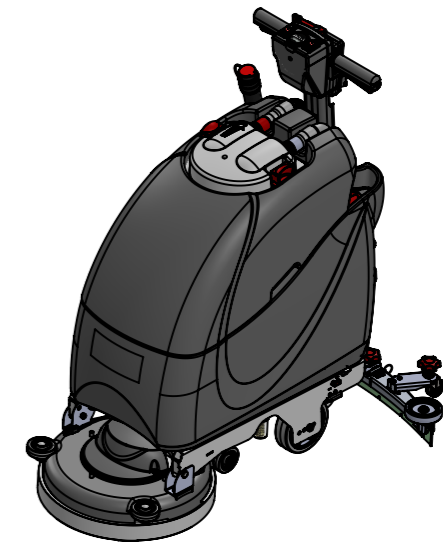
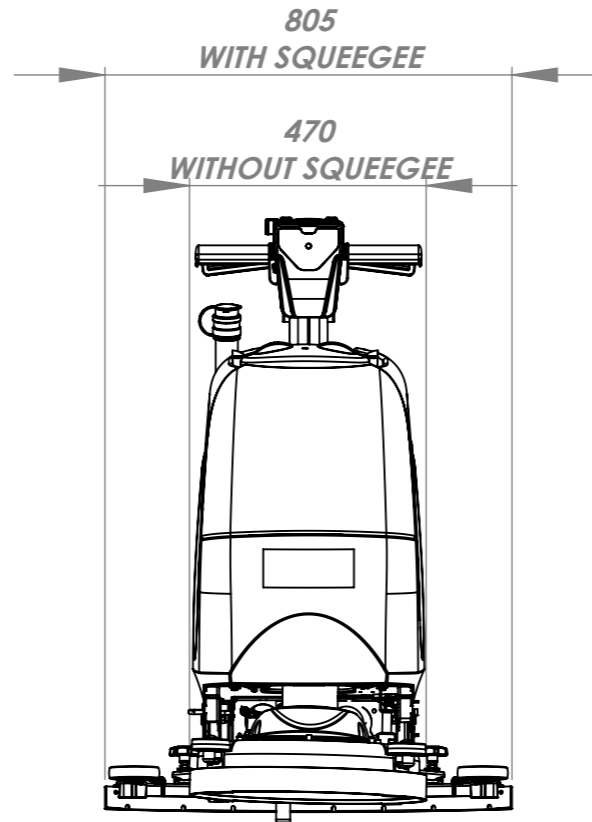


THIRD ANGLE PROJECTION



BRUSH WEIGHT	24kg - 45kg 53lbs - 99.5lbs	GROSS WEIGHT (i.e. with liquid)	100Ah: 168kg 80Ah: 159kg 100Ah: 370.4lbs 80Ah: 350.5lbs
BRUSH PRESSURE	17 - 33 g/cm ² 0.240 - 0.470 lbs/in ²	NETT WEIGHT (i.e. NO liquid)	100Ah: 128kg 80Ah: 119kg 100Ah: 282.2lbs 80Ah: 262.3lbs
PAD PRESSURE	19 - 35 g/cm ² 0.270 - 0.497 lbs/in ²	POWER SOURCE	GELL BATTERY 24 VOLT (2x 12V) 100Ah / 80Ah
CLEANING AREA	800m ² /HOUR @ 2 kph 8610ft ² /HOUR @ 1.25 mph	MAX RUN TIME (BATTERY LIFE)	2.25h MAX
BRUSH MOTOR POWER	300W	RECHARGING TIME	8 HRS 10A charger * option for external charger
BRUSH SPEED	100 rpm	INTERNAL CHARGER INPUT	350W
BRUSH DIA	450mm 18in	INTERNAL CHARGER OUTPUT	10A DC
PAD DIA	400mm 16in	BATTERY WEIGHT (TOTAL)	80Ah : 54.5kg 100Ah: 63.5kg 80Ah : 120lbs 100Ah: 140lbs
VAC MOTOR MAX. POWER	400W	HEIGHT	1160mm 45.6in
VAC MOTOR - SUCTION @ SQUEEGEE	120 mbar	LENGTH	1070mm (1155mm) 42.1in (45.5in)
VAC MOTOR - AIRFLOW @ SQUEEGEE	24.2 l/sec (6.4 US gal/sec)	WIDTH	470mm (805mm) 18.5in (31.7in)
WATER CAPACITY	40L 10.5 US gal	SQUEEGEE LENGTH	805mm 31.7in
WATER FLOW - AVERAGE	0-2 l/min 0-0.53 US gal/min	SOUND PRESSURE LEVEL	≤70 dB(A) : 67.8dB
DRIVE MOTOR POWER	N/A	VIBRATION LEVEL	HAV 0.57 m/s ² HAV 1.87 ft/s ²
DRIVE SPEED	N/A	TGB4045 (TGB1170)	
WATER INGRESS PROTECTION	IPX4		



Numatic INTERNATIONAL LTD
MILLFIELD ROAD, CHARD, SOMERSET
TA20 2GB ENGLAND

THE EXAMPLE SHOWN DETAILS THE METHOD USED FOR IDENTIFYING CRITICAL (INSPECTION) DIMENSIONS WHERE APPLICABLE

TOLERANCES:- LINEAR: 0 DECIMAL PLACES = +/- 1.0mm
1 DECIMAL PLACE = +/- 0.25mm ANGULAR:-
(UNLESS OTHERWISE STATED) 2 DECIMAL PLACES = +/- 0.05mm +/- 0.5 DEGREE

TOOL NUMBER: -		TITLE:- TGB4045 TECHNICAL SPECIFICATION	
WEIGHT:		DIMENSIONS IN MILLIMETERS	MATERIAL:-
Internal Code: MS5		FINISH:-	ITEM No(s):- -
DRAWN: PB	DATE:	DRG No:- DRW-23051	

All components must be ROHS compliant.

A05	NEW DRAWING
REVISION:	CHANGE DETAIL:
1	ST_Numatic_A3.sldprt 20030224

Internal Code: MS5	DRAWN: PB	APPD: -	DATE:
THIS DRAWING IS COPYRIGHT AND IS THE PROPERTY OF NUMATIC INTERNATIONAL LTD. AND MUST NOT BE USED WITHOUT THEIR KNOWLEDGE NOR COMMUNICATED TO ANY PERSON OR COMPANY.			
PRINT SIZE A3			

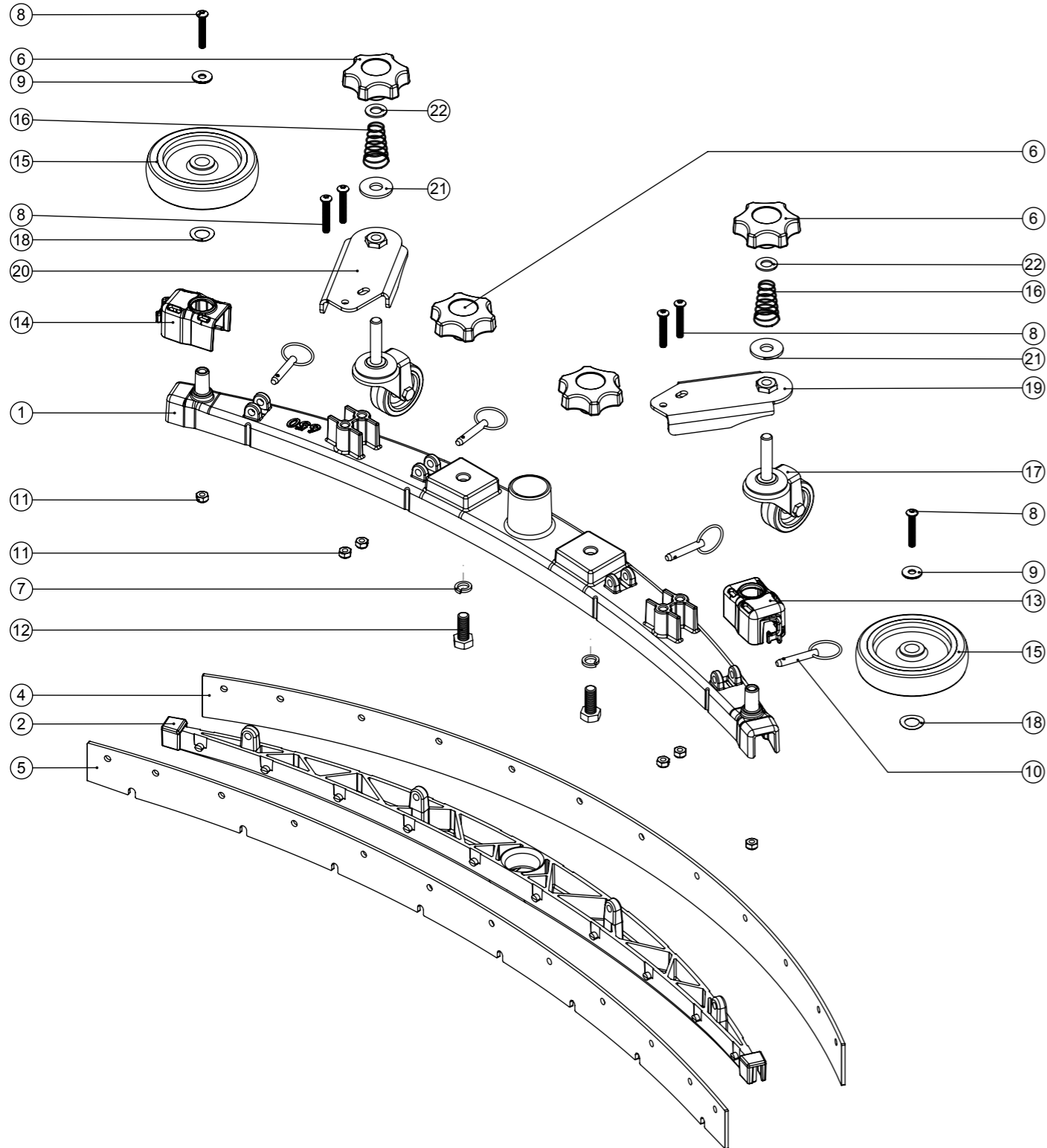
DIMENSIONS IN MILLIMETERS	FINISH:-	ITEM No(s):- -
NOT TO SCALE		

Numatic International Spare Parts

Model No: 650 TWINTEC ALUMINIUM FLOOR TOOL (38MM HOSE, RED TRIM, SERILOR BLADES)

Internal Code: 903347
 DRAWING: DRW-22621 ISS:A05
 MS5 24/10/2016

NB: FOR WIRING SEE DRAWING: N/A



Numatic International Spare Parts

Model No: 650 TWINTEC ALUMINIUM FLOOR TOOL (38MM HOSE, RED TRIM, SERILOR BLADES)

Provisional

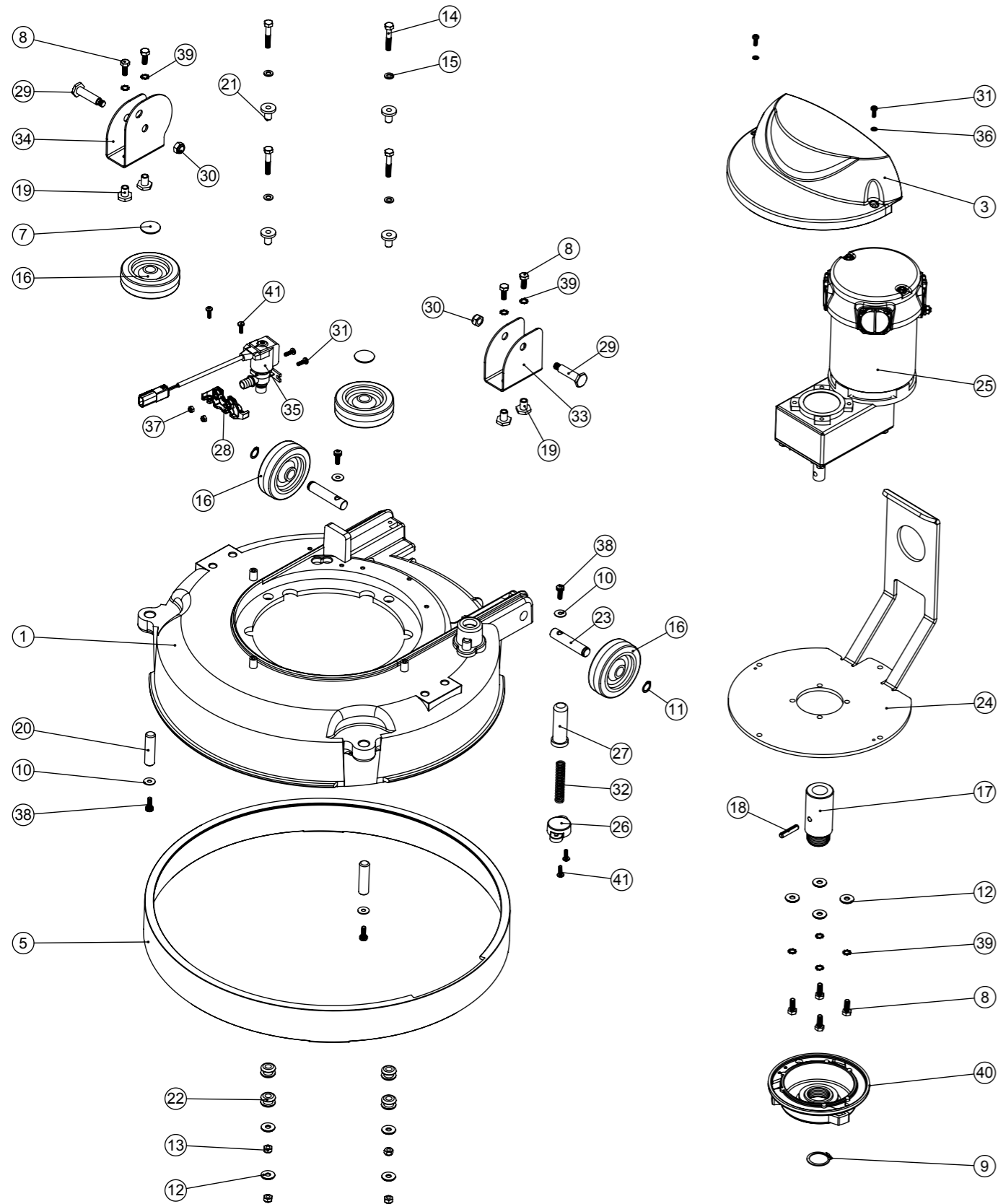
ITEM:	PART No:	Description	Qty
1	208198	(650MM SCRUB WIDTH) ALUMINIUM SQUEEGEE CASTING (38MM HOSE FITTING)	1
2	903345	(650MM SCRUB WIDTH) RED BLADE HOLDER MOULDING (SLOPING PROFILE) (32MM & 38MM HOSE FITTING)	1
	900518	650 REPLACEMENT SERILOR GREEN POLYURETHANE BLADES SET	
4	208970	(650MM SCRUB WIDTH) REPLACEMENT (4.0MM / 35-45-35 SHORE A) REAR LAMINATED SERILOR POLY/BLADE (847MM LONG)	1
5	208967	(650MM SCRUB WIDTH) REPLACEMENT (3.2MM / 40 SHORE A) FRONT MONOLAYER SERILOR POLY/BLADE (819MM LONG)	1
6	903281	M10 LOBE KNOB (RED)	4
7	219899	M10 SINGLE COIL STAINLESS STEEL WASHER	2
8	219933	M6 X 35MM SOCKET BUTTON HEAD BOLT STAINLESS STEEL	6
9	219647	M6 FORM G STAINLESS STEEL WASHER	2
10	206953	DETENT PINS	4
11	219642	M6 STAINLESS STEEL NYLON INSERT NUT	6
12	219909	M10 X 25MM LONG HEXAGONAL STAINLESS STEEL SCREW	2
13	237322	RIGHT HAND FLOOR TOOL CLIP MOULDING	1
14	237323	LEFT HAND FLOOR TOOL CLIP MOULDING	1
15	208796	4 INCH WHEEL	2
16	229175	CONICAL SPRING	2
17	208497	50MM DIAMETER GREY TPR TYRED SWIVEL CASTORS C/W M10 X 45 SWAGED STEM.	2
18	219891	13MM WAVEY WASHER	2
19	304523	ADJUSTABLE FLOOR TOOL CASTOR PLATE RHS WELD ASSY	1
20	304522	ADJUSTABLE FLOOR TOOL CASTOR PLATE LHS WELD ASSY	1
21	291124	M10 PENNY WASHER STAINLESS STEEL	2
22	219903	M10 FORM A STAINLESS STEEL WASHER	2

Numatic International Spare Parts

Model No: TGB 3045/4045 (& HGB) BRUSH DECK ASSEMBLY EXPLODED VIEW

Internal Code: 903634
 DRAWING: DRW-22932 ISS:A10
 MS5 05/01/2017

NB: FOR TGB 3045 WIRING SEE DRAWING: DRW-22779
 NB: FOR TGB 4045 WD: DRW-22704



Numatic International Spare Parts

Model No: TGB 3045/4045 (& HGB) BRUSH DECK ASSEMBLY EXPLODED VIEW

Provisional

ITEM:	PART No:	DESCRIPTION	COMMENTS:	QTY.
1	229258	TT 345 GRAPHITE BASE MOULDING (SPARES USE 329090)		1
	904896	HGB3045 RED BASE MOULDING (SPARES USE 905414)	HGB	
3	237380	AMER MOTOR COVER		1
	904897	AMER MOTOR COVER (BLACK)	HGB	
5	229644	450MM DIAMETER SPLASH SKIRT MOULDING		1
	904898	450MM DIAMETER SPLASH SKIRT MOULDING (BLACK)	HGB	
7	204021	12.7MM STAINLESS STEEL HUB CAP		2
8	219719	M6 X 16MM LONG HEXAGONAL STAINLESS STEEL HEAD BOLT		8
9	230048	26MM EXTERNAL CIRCLIP		1
10	219644	M5 FORM G STAINLESS STEEL WASHER		4
11	219345	12MM EXTERNAL CIRCLIP		2
12	219647	M6 FORM G STAINLESS STEEL WASHER		8
13	219642	M6 STAINLESS STEEL NYLON INSERT NUT		4
14	291127	M6 X 35 LONG HEX BOLT STAINLESS STEEL		4
15	219870	M6 FORM A WASHER STAINLESS STEEL		4
16	204068	3 INCH GREY WHEEL		4
17	208727	DRIVE SHAFT		1
18	291079	6MM X 30MM STAINLESS STEEL ROLL PIN		1
19	219606	BRACKET SPACER		4
20	206013	BUFFER WHEEL PIN		2
21	208011	MOTOR MOUNTING SPACER		4
22	229025	STANDARD GROMMET		4
23	229382	REAR WHEEL PIN		2
24	392362	MOTOR ADAPTOR PLATE PAINT SILVER GREY		1
25	205245	AMER 100RPM MOTOR		1
26	223242	PLUNGER MOUNTING PLATE MOULDING		1
27	229128	PLUNGER		1
28	902556	SOLENOID MOUNT MOULDING		1
29	206236	PIVOT PIN		2
30	219639	M8 STAINLESS STEEL NYLON INSERT NUT		2
31	219890	M4 X 12MM LONG POZI PAN STAINLESS STEEL SCREW		4
32	219394	COMPRESSION SPRING		1
33	392249	DECK MOUNT RH		1
34	392248	DECK MOUNT BRACKET		1
35	902949	TERMINATED SOLONOID CABLE.BLACK.125.0M5.2.24		1
36	291145	M4 SHAKEPROOF WASHER STAINLESS STEEL		2
37	219687	M4 STAINLESS STEEL NYLON INSERT NUT		2
38	291132	M5 X 16MM LONG STAINLESS STEEL POZI PAN SEMS SCREW		4
39	902353	M6 EXTERNAL SHAKEPROOF WASHER STAINLESS STEEL		8
40	230285	MODIFIED CHUCK (CRO)		1
41	219569	NO8.1/2 INCH. LG.POZI-PAN.SCREW.STAINLESS STEEL.PLASTITE		4

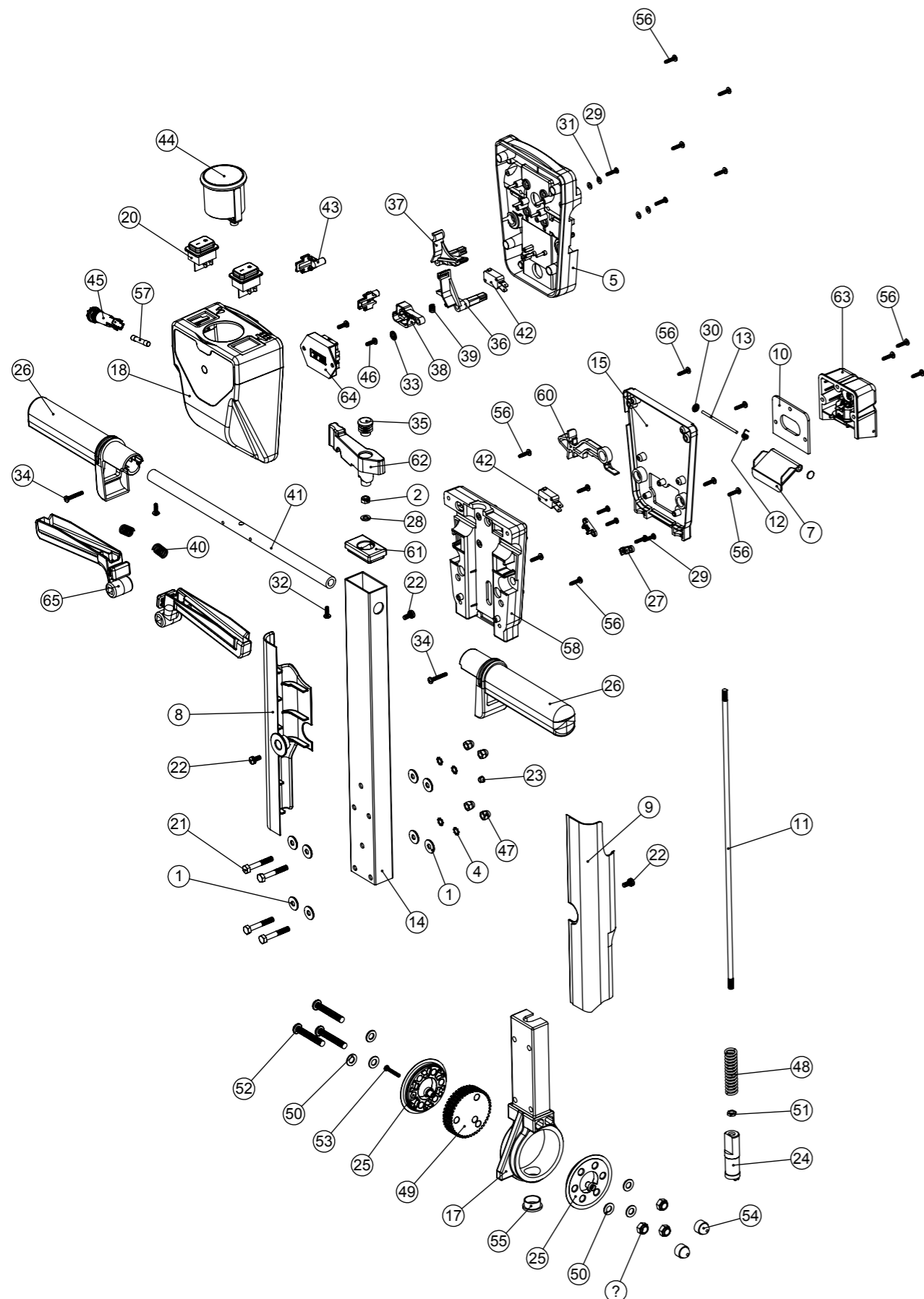
Numatic International Spare Parts

Model No: TGB 3045/4045/4055 (& HGB) HANDLE ASSEMBLY EXPLODED VIEW

Internal Code: 903636
 DRAWING: DRW-22934 ISS:A14
 PRO 06/04/2017

NB: FOR TGB & HGB 3045 WIRING SEE DRAWING: DRW-22779

NB: FOR TGB 4045/4055 WD: DRW-22704



Numatic International Spare Parts

Model No: TGB 3045/4045/4055 (& HGB) HANDLE ASSEMBLY EXPLODED VIEW

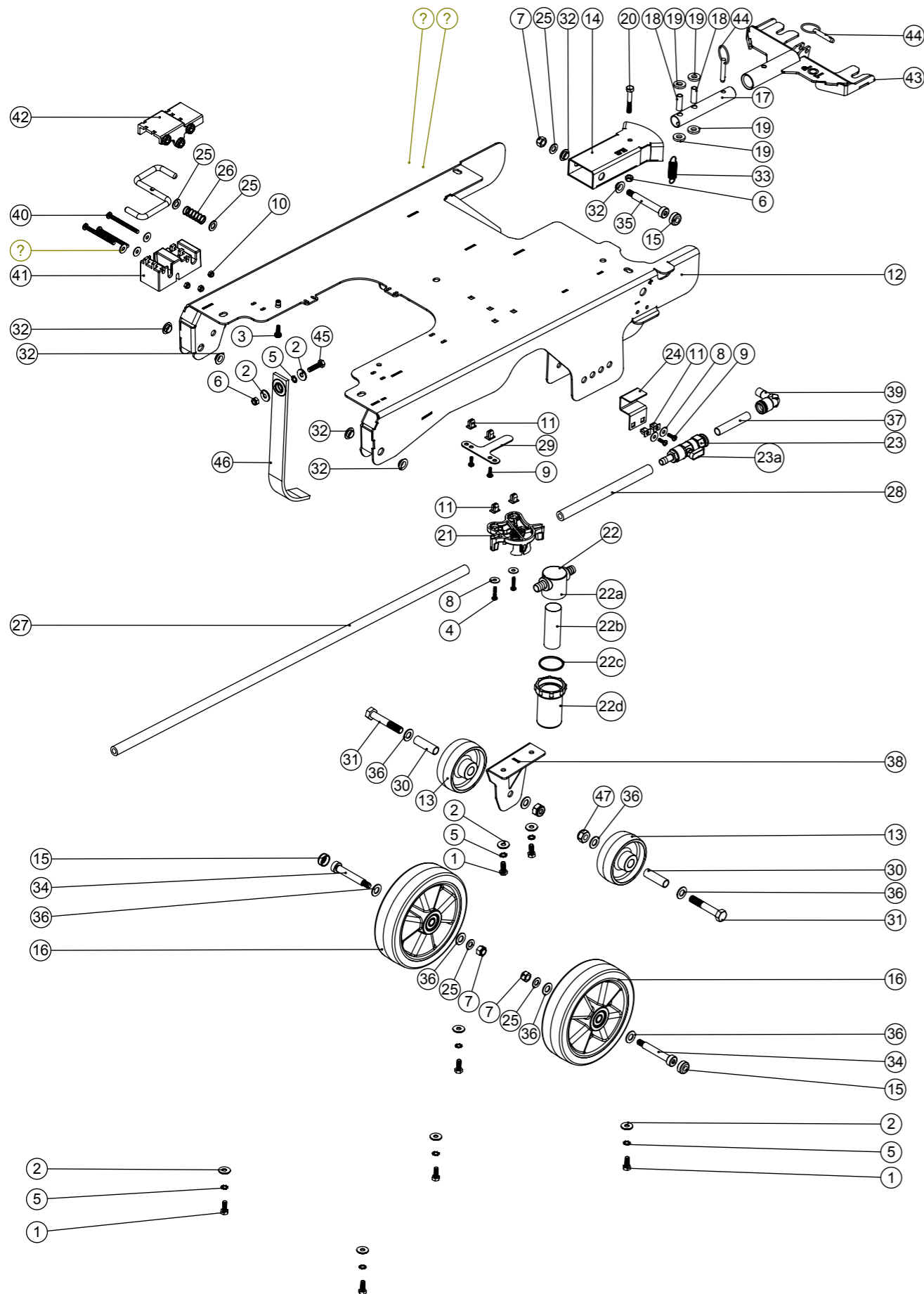
ITEM:	PART No:	DESCRIPTION	COMMENTS:	QTY.
1	219647	M6 FORM G STAINLESS STEEL WASHER		8
2	219642	M6 STAINLESS STEEL NYLON INSERT NUT		1
3	219639	M8 STAINLESS STEEL NYLON INSERT NUT	TORQUE 1.5-2NM	3
4	902353	M6 EXTERNAL SHAKEPROOF WASHER STAINLESS STEEL		4
5	227576	FRONT INNER HALF MOULDING	STANDARD TGB MACHINE	1
	237542	FRONT INNER HALF MOULDING (BLACK)	FOR HGB	
	229508	FLAME RETARDANT FRONT INNER HALF MOULDING	FLAME RETARDENT 120V	
7	227781	FLAP MOULDING		1
8	237692	HANDLE CABLE COVER L/H	HGB USE 904907	1
9	237693	HANDLE CABLE COVER R/H	HGB USE 904908	1
10	202105	SOCKET COVER SEALING GASKET		1
11	229461	440MM HANDLE LOCKING ROD		1
12	219819	TORSION SPRING		1
13	390979	72MM LONG X 3MM DIAMETER STAINLESS STEEL BAR		1
14	903603	TGB/TTG 430MM PROCESSED ALI HANDLE PAINT SILVER		1
15	303509	MODIFIED REAR COVER	STANDARD TGB MACHINE	1
	905828	MODIFIED REAR COVER MOULDING (BLACK)	FOR HGB	
	303628	FLAME RETARDANT MODIFIED REAR COVER MOULDING	FLAME RETARDENT 120V (+HGB)	
17	900398	HANDLE CASTING MACHINED (HNS VERSION)		1
18	903556	TGB HANDLE FRONT COVER TFPP	STANDARD TGB MACHINE	1
	905846	TGB HANDLE FRONT COVER TFPP BLACK	FOR HGB	
	903560	TGB HANDLE FRONT COVER FRPP	FLAME RETARDENT 120V (+HGB)	
20	902235	SWITCH DPST RED ILLUMINATED WITH MEMBRANE 24V		2
21	291125	M6 X 40 LONG HEX BOLT STAINLESS STEEL		4
22	291131	M5 X 12MM LONG STAINLESS STEEL POZI PAN SEMS SCREW		3
23	229009	BLANKING PLUG		1
24	229073	GEAR LOCKING PIN		1
25	900396	ADJUSTMENT GEAR SPACER		2
26	227580	HAND GRIP MOULDING	HGB USE 237544	2
27	229669	LOLINE HANDLE CABLE CLAMP		2
28	219493	M6 NYLON WASHER		1
29	219107	NO6.5/8 INCH LG.POZI-PAN.SCREW.Z/PL.PLASTITE		6
30	219832	3MM DIAMETER STARLOCK		2
31	219206	M4 FORM A WASHER		4
32	219270	No8 X 1/2 INCH LONG POZI PAN SELF TAP SCREW		2
33	219805	4MM SPIREFIX		1
34	219811	NO8 X 1 INCH LONG POZI-PAN SELF TAP SCREW		2
35	20638V	19MM BLACK TUBE END STOP		1
36	227585	LEFT HAND SWITCH OPERATING LEVER MOULDING		1
37	227586	RIGHT HAND SWITCH OPERATING LEVER MOULDING		1
38	227587	CENTRE SWITCH OPERATING LEVER MOULDING		1
39	219804	SWITCH COMPRESSION SPRING		1
40	219803	TRIGGER COMPRESSION SPRING		2
41	338269	CROSS TUBE		1
42	229483	SNAP ACTION SWITCH		2
43	903558	TGB HANDLE BOSS		2
44	902532	BATTERY DISCHARGE INDICATOR + HOUR METER 24V		1
45	903032	BULGIN PANEL MOUNT FUSEHOLDER		1
46	219569	NO8.1/2 INCH. LG.POZI-PAN.SCREW.STAINLESS STEEL.PLASTITE		2
47	219764	M6 STAINLESS STEEL DOME NUT		4
48	229138	SPRING		1
49	900397	MINI ADJUSTMENT GEAR		1
50	219578	M8 FORM A STAINLESS STEEL WASHER		6
51	219099	M6 HALF NUT		1
52	219922	M8 X 50MM LONG SOCKET BUTTON HEAD STAINLESS STEEL BOLT		3
53	291150	NO6 X 1 INCH LONG POZI PAN SCREW S/S		1
54	903260	BOLT AND NUT CAP		2
55	229099	25MM DIA HOLE PLUG		1
56	219370	No8 X 5/8 INCH LONG PLASTITE STAINLESS STEEL SCREW		15
57	903066	FUSE 2.5A (6.3x32)		1
58	227577	REAR INNER HALF MOULDING	STANDARD TGB MACHINE	1
	237543	REAR INNER HALF MOULDING (BLACK)	FOR HGB	
	229509	FLAME RETARDANT REAR INNER HALF MOULDING	FLAME RETARDENT 120V (+HGB)	
60	227584	INTERLOCK LEVER MOULDING		1
61	903546	HANDLE PLUG MOULDING (RED)		1
62	903545	ADJUSTMENT LEVER MOULDING (RED)		1
63	904030	240V EMI FILTER WITH SOCKET COVER ASSEMBLY (PROCESSED)	240V VERSION	1
	904031	120V EMI FILTER WITH SOCKET COVER ASSEMBLY (PROCESSED)	120V VERSION	
64	903766	DMH Terminal Block PCB Assembly		1
65	903547	TRIGGER MOULDING (RED)		2

Numatic International Spare Parts

Model No: TGB4045/4055 EXPLODED VIEW: CHASSIS

Internal Code: -
 DRAWING: DRW-22935 ISS:A07
 PRO 02/02/2017

NB: FOR WIRING SEE DRAWING: N/A



Numatic International Spare Parts

Model No: TGB4045/4055 EXPLODED VIEW: CHASSIS

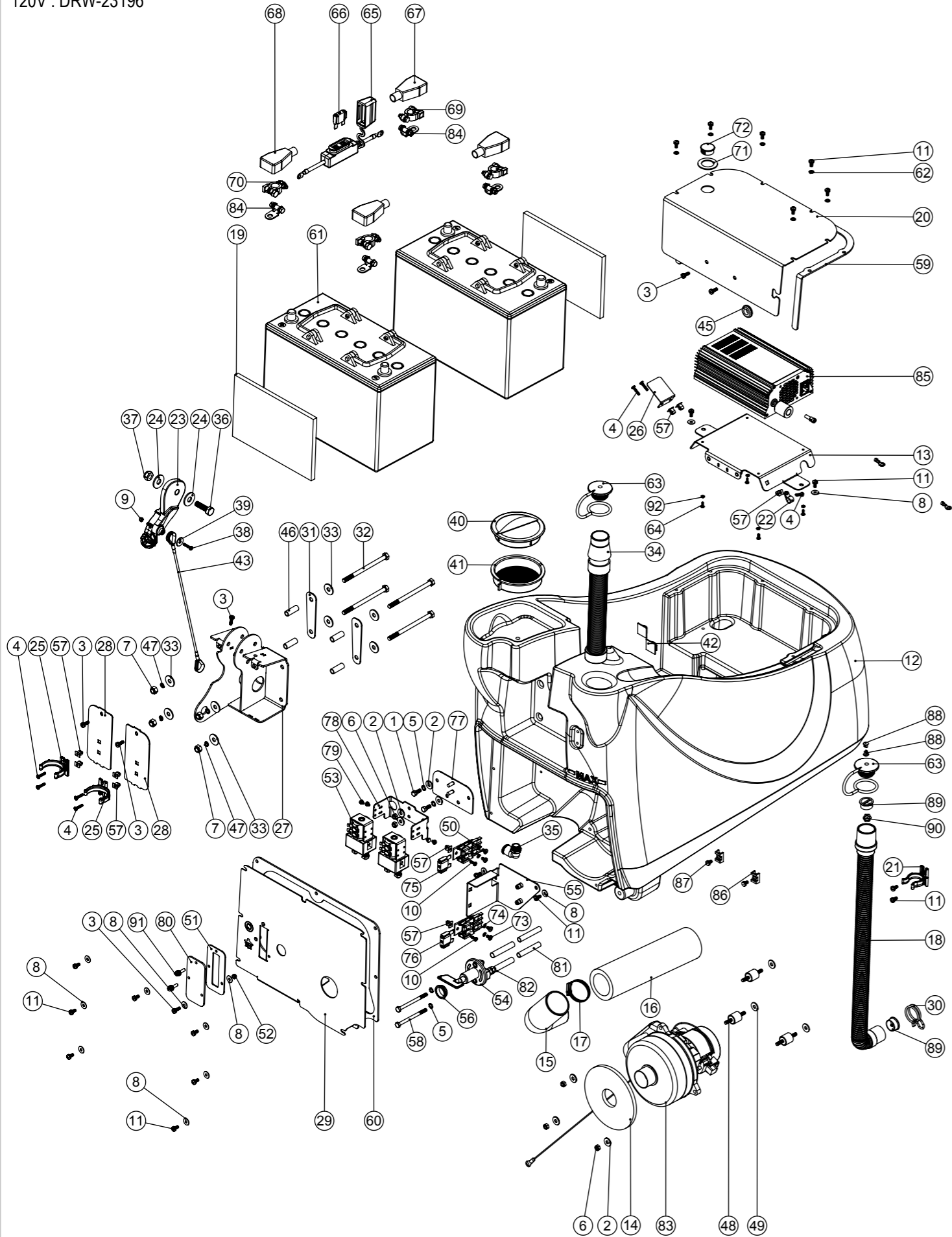
ITEM:	PART No:	DESCRIPTION	COMMENTS:	QTY
1	219719	M6 X 16MM LONG HEXAGONAL STAINLESS STEEL HEAD BOLT		7
2	219647	M6 FORM G STAINLESS STEEL WASHER		9
3	291132	M5 X 16MM LONG STAINLESS STEEL POZI PAN SEMS SCREW		1
4	219568	NO8.3/4 INCH LG.POZI-PAN.SCREW.STAINLESS STEEL.PLASTITE		2
5	902353	M6 EXTERNAL SHAKEPROOF WASHER STAINLESS STEEL		8
6	219642	M6 STAINLESS STEEL NYLON INSERT NUT		2
7	219639	M8 STAINLESS STEEL NYLON INSERT NUT		3
8	219644	M5 FORM G STAINLESS STEEL WASHER		7
9	219569	NO8.1/2 INCH. LG.POZI-PAN.SCREW.STAINLESS STEEL.PLASTITE		4
10	219633	M5 STAINLESS STEEL NYLON INSERT NUT		3
11	900986	NYLON GROMMET NUT (PLASTIC INSERT TO SUIT No 8 PLASTITE SCREW)		6
12	903559	TGB/4045/4055 CHASSIS WELD ASSY (12SWG M/S) PAINT SILVER		1
13	206713	80MM DIAMETER WHITE WHEEL		2
14	304359	TT/TTB/4045/4055 SQUEEGEE MOUNT WELD ASSEMBLY		1
15	237632	SHOULDER BOLT COVER		3
16	208638	160mm WHEEL WITH POLYURETHENE TYRE		2
17	304356	FLOOR TOOL PIVOT TUBE		1
18	206954	SPIRO SPACER		2
19	206964	SLIDE NYLON SPACER		4
20	291125	M6 X 40 LONG HEX BOLT STAINLESS STEEL		1
21	901006	FILTER MOUNTING BRACKET		1
22	208888	EXTENDED STRAINER		1
22a	208827	STRAINER BLACK TOP	SPARE PART	1
22b	208889	EXTENDED STRAINER 50 MESH SCREEN	SPARE PART	1
22c	208830	STRAINER GASKET	SPARE PART	1
22d	208890	EXTENDED STRAINER CLEAR BOWL	SPARE PART	1
23	901542	12MM PUSH FIT TO 10MM HOSE TAIL BALL VALVE ASSEMBLY		1
23a	901544	TAP HANDLE C/W COVER AND M3X6MM SCREW (SPARE ITEM)	SPARE PART	1
24	392314	10MM TAP BRACKET		1
25	219578	M8 FORM A STAINLESS STEEL WASHER		5
26	208578	DECK LOCK SPRING		1
27	391453	SILICON TUBE 750MM LONG X 8MM I/D X 3.2MM WALL SECTION		1
28	391452	SILICON TUBE 8MM I/D X 3.2MM WALL SECTION (CUT 190MM)		1
29	321902	SILENCER CLAMP		1
30	391440	1/2 INCH X 18G X 41MM LONG STAINLESS STEEL SPACER TUBE		2
31	219894	M10 X 60MM LONG HEXAGONAL STAINLESS STEEL BOLT		2
32	208312	IGUS BEARING (GFM 101205)		6
33	208619	FLOOR TOOL SPRING		1
34	291057	M8 X 10 X 55MM LONG HEX SOCKET SHOULDER BOLT		2
35	208574	M8 X 10 X 60MM LONG HEX SOCKET SHOULDER BOLT		1
36	219903	M10 FORM A STAINLESS STEEL WASHER		8
37	901553	NYLON TUBE 12MM OD X 10MM ID (65MM)		1
38	903611	TGB TRANSPORT WHEEL BRACKET WELD ASSEMBLY PAINT SILVER		1
39	901545	ELBOW ANGLE CONNECTOR 12MM PUSH IN TO 12MM STEM		1
40	901558	M5 X 60MM STAINLESS STEEL POZI PAN MACHINE SCREW		3
41	901280	LATCH BLOCK BOTTOM MOULDING		1
42	901279	LATCH BLOCK TOP MOULDING		1
43	304466	FLOOR TOOL BRACKET ASSEMBLY (TT/TTB4045/4055)		1
44	206953	DETENT PINS		2
45	219925	M6 x 25MM LONG STAINLESS STEEL HEX SCREW		1
46	903683	ANTI-STATIC STRAP (CUT TO LENGHT: 270MM LONG)		1
47	219897	M10 STAINLESS STEEL NYLON INSERT NUT		2
48	904440	DECK LATCH BAR		1
49	219558	M5 STAINLESS STEEL NUTSERT		1

Numatic International Spare Parts

Model No: TGB4045/4055 EXPLODED VIEW: BOTTOM TANK

Internal Code: -
MS5 DRAWING: DRW-22919 ISS:A15

NB: FOR WIRING SEE DRAWINGS:
230V : DRW-22704
120V : DRW-23196



Numatic International Spare Parts

Model No: TGB4045/4055 EXPLODED VIEW: BOTTOM TANK

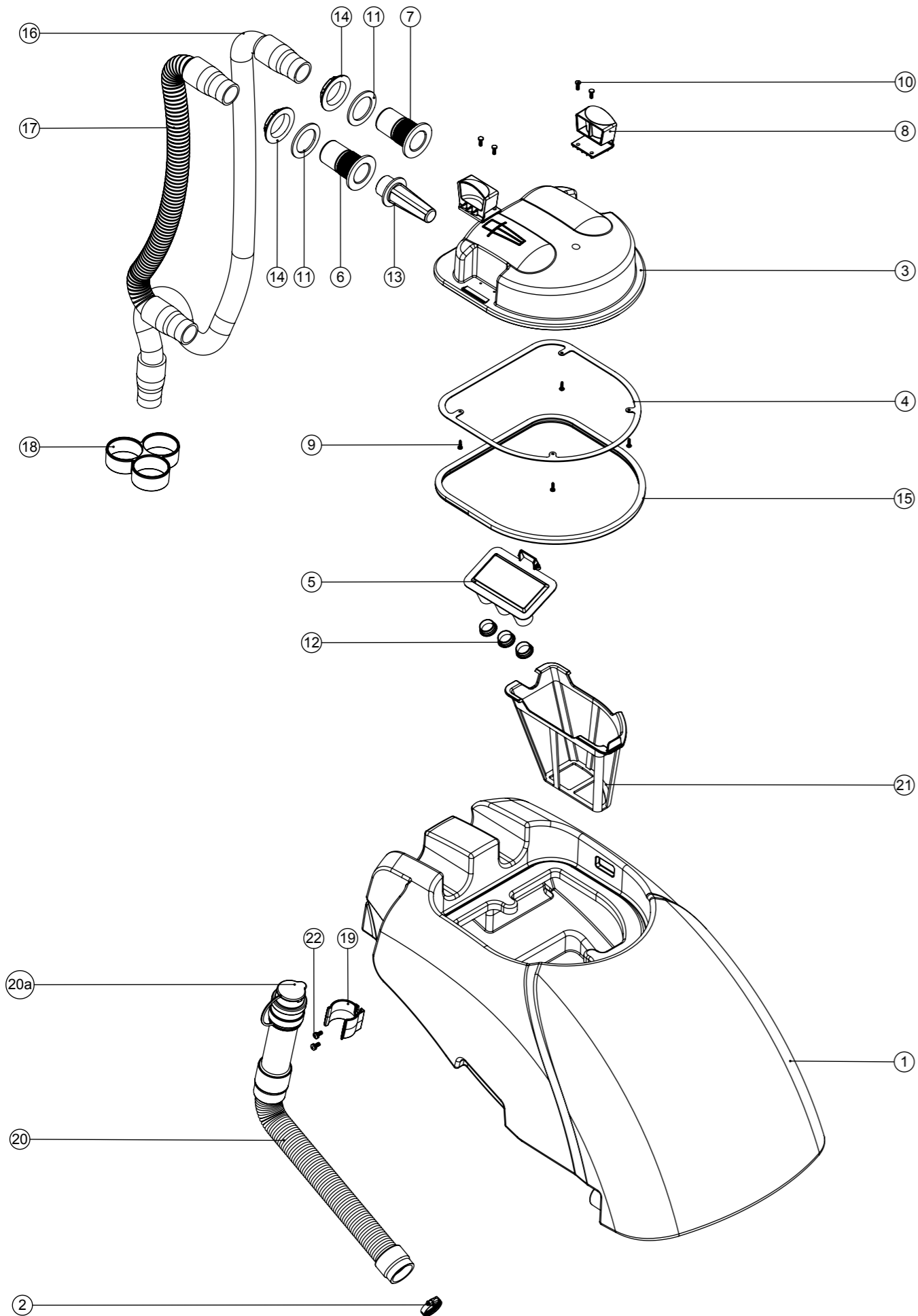
ITEM:	PART No:	DESCRIPTION	COMMENTS:	QTY
1	219719	M6 X 16MM LONG HEXAGONAL STAINLESS STEEL HEAD BOLT		2
2	219647	M6 FORM G STAINLESS STEEL WASHER		7
3	291132	M5 X 16MM LONG STAINLESS STEEL POZI PAN SEMS SCREW		6
4	219568	NO8 3/4 INCH LG.POZI-PAN.SCREW.STAINLESS STEEL.PLASTITE		7
5	902353	M6 EXTERNAL SHAKEPROOF WASHER STAINLESS STEEL		4
6	219642	M6 STAINLESS STEEL NYLON INSERT NUT		5
7	219639	M8 STAINLESS STEEL NYLON INSERT NUT		4
8	219644	M5 FORM G STAINLESS STEEL WASHER		13
9	219687	M4 STAINLESS STEEL NYLON INSERT NUT		1
10	219569	NO8 1/2 INCH . LG.POZI-PAN.SCREW.STAINLESS STEEL.PLASTITE		2
11	291131	M5 X 12MM LONG STAINLESS STEEL POZI PAN SEMS SCREW		19
12	237741	TTB.4055 BOTTOM TANK MOULDING HD (GRAPHITE)	WITH LOGO	1
	237742	TTB.4055 BOTTOM TANK MOULDING HD (GRAPHITE) EP	WITHOUT LOGO	1
13	903537	CHARGER PLATE - PAINTED SILVER		1
14	208477	MOTOR PAD		1
15	208571	DIP MOULDED ELBOW		1
16	208306	SILENCER FOAM TUBE		1
17	219529	STAINLESS STEEL HOSE CLAMP (45MM - 60MM)		1
18	213025	DUMP HOSE		1
19	208645	FOAM BATTERY SPACER		2
20	903536	CHARGER COVER PLATE PAINTED SILVER		1
21	901916	28mm HOSE CLIP		1
22	219393	P CLIP		1
23	902324	RED SQUEEGEE LIFT HANDLE		1
24	291124	M10 PENNY WASHER STAINLESS STEEL		2
25	237754	35-38MM HOSE CLIP		2
26	392356	TTB NORD CHARGER MIRROR PLATE		1
27	903612	TGB 3045 HANDLE MOUNT WELD ASSEMBLY Z/PL		1
28	903539	HANDLE MOUNT COVER PAINTED SILVER		2
29	903538	TGB4045/55 BACK PLATE PAINTED SILVER		1
30	902133	SPRING WIRE CLAMP (YDNAC-Y8010356)		1
31	392449	HANDLE MOUNT LINK PLATE PAINT SILVER		2
32	291126	M8 X 120 LONG HEX BOLT STAINLESS STEEL		4
33	219716	M8 FORM G STAINLESS STEEL WASHER		8
34	208960	TTB/TT FILLING HOSE		1
35	901539	ELBOW ANGLE CONNECTOR 3/8 PARALLEL THREAD C/W O-RING TO 12MM PUSH IN		1
36	219895	M10 X 35MM LONG HEXAGONAL STAINLESS STEEL SCREW		1
37	219897	M10 STAINLESS STEEL NYLON INSERT NUT		1
38	219686	M4 X 20MM LONG STAINLESS STEEL POZI PAN MACHINE SCREW		1
39	291118	M5 STAINLESS STEEL WASHER 19MM OD		1
40	903544	FILLER CAP LID (RED)		1
41	903543	CLEAN TANK INLET FILTER (RED)		1
42	220403	CABLE CLIP		2
43	208961	TTB LIFTING WIRE		1
44	219558	M5 STAINLESS STEEL NUTSERT		3
45	219735	GROMMET		1
46	305046	30MM PVC HOSE ID 8.0MM X 11.0MM		4
47	219898	M8 SINGLE COIL STAINLESS STEEL WASHER		4
48	902006	AV MOUNT MALE TO MALE M6 X 18 (BODY Ø20X20 - REF.P2004.020-020)		3
49	219008	M6 FORM G WASHER		3
50	230102	FUSE HOLDER RATED AT 60 AMPS		2
51	903601	FUSE PLATE GASKET		1
52	219633	M5 STAINLESS STEEL NYLON INSERT NUT		1
53	230111	CONTACTOR		2
54	206746	MASTER KEY SWITCH & KEY	206813 SPARE KEY	1
55	903568	ISOLATOR SUPPORT BRACKET PAINTED SILVER		1
56	902331	QF PVC GROMMET (26MM X 22MM X 2MM)		1
57	900986	NYLON GROMMET NUT (PLASTIC INSERT TO SUIT No 8 PLASTITE SCREW)		9
58	219915	M6 X 80MM LONG STAINLESS STEEL HEXAGONAL HEAD BOLT		2
59	903541	CHARGER COVER GASKET		1
60	903540	BACK PLATE GASKET		1
61	220867	12V TRACTION BLOCK BATTERY	80Ah VERSION	2
	205112	100 AMP/HOUR REPLACEMENT BATTERY (C/W PACKAGING FOR 230138 BATTERY)	100Ah VERSION	2
62	219355	M5 FORM A STAINLESS STEEL WASHER		6
63	903341	32MM HOSE CAP RED (C/W 8MM HOLE)		2
64	902533	No6 X 3/8 INCH LONG POZI PAN SELF TAP SCREW STAINLESS STEEL		4
65	903175	WATERPROOF BATTERY FUSE HOLDER.210.RING.RING		1
66	221047	40 AMP MAXI FUSE		1
67	208936	BLACK BATTERY TERMINAL COVER (415N8V14)		2
68	208935	RED BATTERY TERMINAL COVER (415N8V02)		2
69	220455	BATTERY TERMINAL CONVERTOR	80Ah VERSION	2
70	220454	POSITIVE BATTERY TERMINAL CONVERTER	80Ah VERSION	2
71	902328	WINDOW PLUG GASKET		1
72	206314	WINDOW PLUG		1
73	219864	M5 X 8MM LONG POZI-PAN SCREW Z/PL		4
74	219861	M5 SINGLE COIL STAINLESS STEEL WASHER		4
75	230104	30 AMP MAXI FUSE		1
76	221091	20 AMP MAXI FUSE		1
77	903571	CONTACTOR ADAPTER BRACKET ASSY PAINTED SILVER		1
78	903572	CONTACTOR BRACKET (TGB) PAINTED SILVER		1
79	219566	M4 X 6MM LONG POZI PAN SCREW		4
80	903602	FUSE COVER PLATE		1
81	903663	10MM O/D X 1MM WALL THICKNESS S/STEEL TUBE CUT TO LENGTH (0.060)		2
82	903664	60MM LONG X 10MM I/D BLACK PVC SLEEVING		2
83	903473	24V TANGENTIAL DISCHARGE 2-STAGE VAC MOTOR ASSEMBLY		1
84	902666	BATTERY CONNECTOR (M6 - M10)	100Ah VERSION	4
85	903933	CHARGER ASSEMBLY NORD 230V 10A		1
	903934	CHARGER ASSEMBLY NORD 120V 10A		1
86	220904	CABLE CLIP PLATFORM		2
87	291135	M5 X 10MM LONG STAINLESS STEEL POZI PAN SEMS SCREW		2
88	904403	BARBED RIVET BLACK		2
89	904108	FLOAT STOP MOULDING		2
90	904109	FLOAT MOULDING		1
91	904491	M5 x16MM SLOT KNURLED THUMB SCREW NYLON (WHITE)		2
92	904219	M3 STAINLESS STEEL EXTERNAL SHAKEPROOF WASHER		4

Numatic International Spare Parts

Model No: TGB4045/4055 EXPLODED VIEW: TOP TANK

Internal Code: -
MS5 DRAWING: DRW-22926 ISS:A05

NB: FOR WIRING SEE DRAWING: N/A



Numatic International Spare Parts

Model No: TGB4045/4055 EXPLODED VIEW: TOP TANK

ITEM:	PART No:	DESCRIPTION	COMMENTS:	QTY
1	903157	TTB.4055 TOP TANK MOULDING (GRAPHITE GREY)		1
2	206209	A.B.A HOSE CLIP		1
3	237381	INTEGRATED CHASSIS SEPARATOR		1
4	392200	FILTER GASKET RING		1
5	237090	SEPARATOR FLOAT MOULDING (MK 2)		1
6	237526	38MM RED DRAIN HOSE CONNECTOR		1
7	237018	38MM DRAIN HOSE CONNECTOR		1
8	902919	CLIP MOULDING (RED)		2
9	219852	NO6 X 1/2 LONG POZI PAN STAINLESS STEEL SELF TAP SCREW		4
10	219569	NO8.1/2 INCH. LG.POZI-PAN.SCREW.STAINLESS STEEL.PLASTITE		4
11	219310	RUBBER WASHER		2
12	206315	TUBE END PLUG		3
13	206265	TT/B 345 BARREL FILTER		1
14	206116	BLACK NUT		2
15	208591	NEW SEPARATOR GASKET		1
16	280019	35MM X 690MM LONG 3:1 STRETCH HOSE (SHORT & LONG CUFF)		1
17	213058	VAC HOSE 650MM X Ø38MM		1
18	237718	HOSE GUIDE		1
19	237382	ACETAL HOSE CLIP MOULDING		1
20	901548	35MM X 250MM STRETCH HOSE (3:1) C/W ADJUSTABLE CUFF + CAP		1
20a	900903	HOSE CLOSURE REPLACEMENT KIT (35MM-38MM STRETCH HOSE)	SPARE ITEM	1
21	903542	GRIT FILTER BASKET (RED)		1
22	291131	M5 X 12MM LONG STAINLESS STEEL POZI PAN SEMS SCREW		2

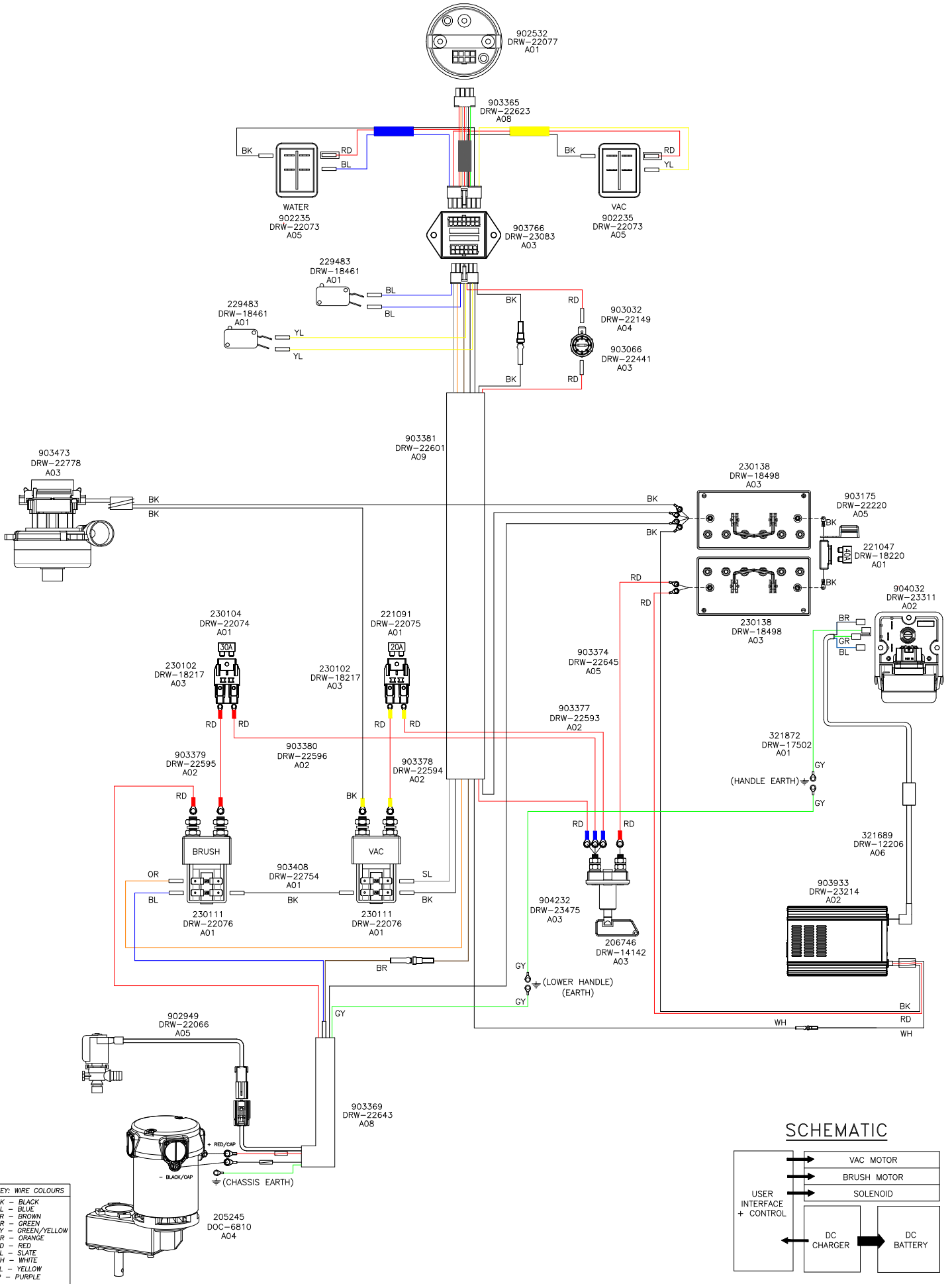
WIRING DIAGRAM

COMP. No
903478

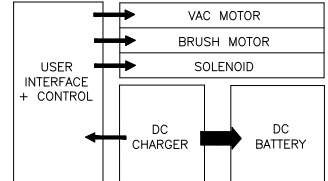
DRG. No
DRW-22704

WIRING DIAGRAM.TWINTEC.1S.3WCR.230.50.NT.PLG

ISSUE	REVISION	DRAWN	APPD.	DATE
A12	LOWER HANDLE EARTH WIRE ADDED REF PROJ-0350 + EMI FILTER ADDED	AM	MB	23/11/16



SCHEMATIC



KEY: WIRE COLOURS

BK	- BLACK
BL	- BLUE
BR	- BROWN
GR	- GREEN
GY	- GREEN/YELLOW
OR	- ORANGE
RD	- RED
SL	- SLATE
WH	- WHITE
YL	- YELLOW
P	- PURPLE