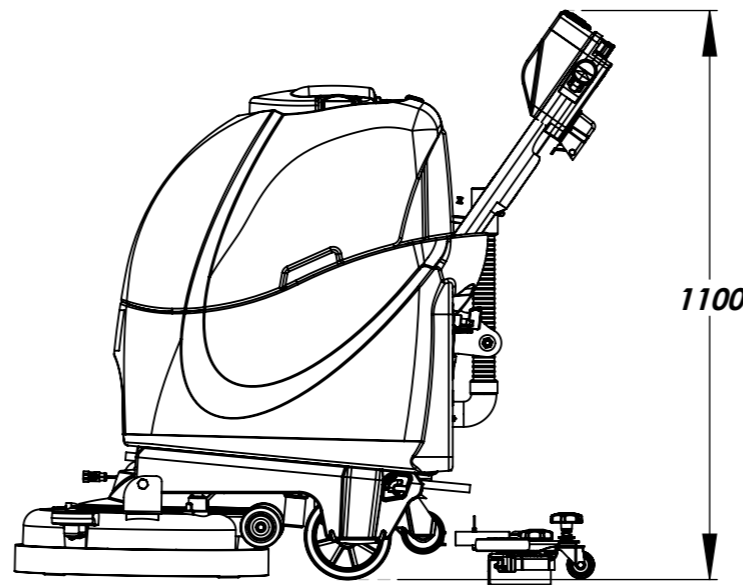
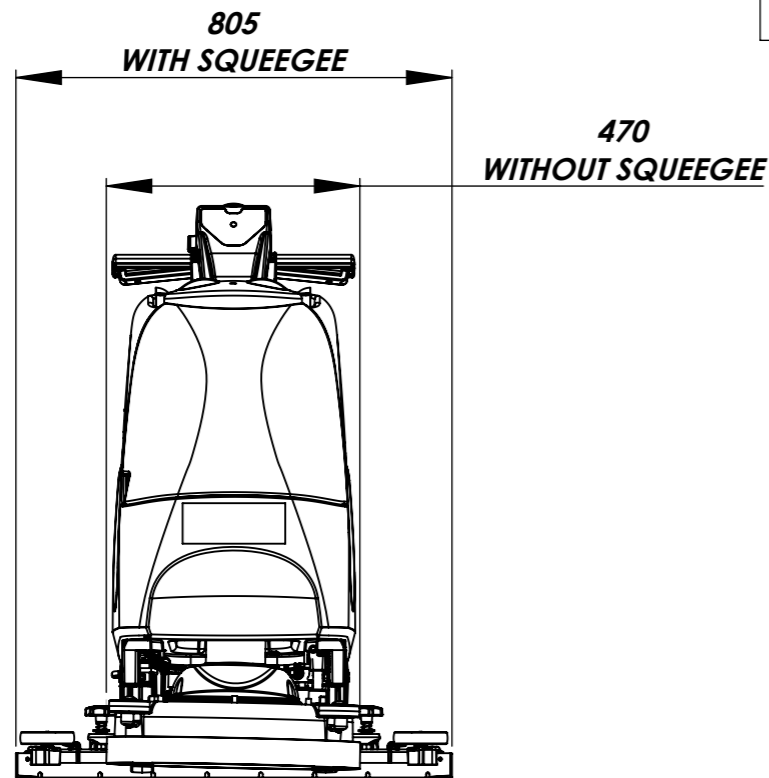
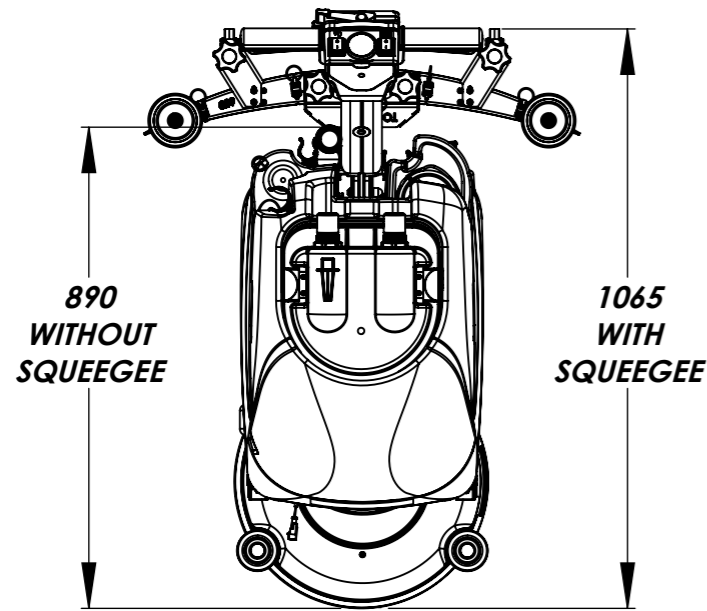
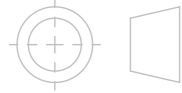


THIRD ANGLE PROJECTION



BRUSH WEIGHT	29.0 kg 64 lbs	GROSS WEIGHT (i.e. with liquid)	120 kg 264 lbs
BRUSH PRESSURE	21.7 g/cm ² 0.308 lbs/in ²	NETT WEIGHT (i.e. NO liquid)	90 kg 184.4 lbs
PAD PRESSURE	23.1 g/cm ² 0.328 lbs/in ²	POWER SOURCE	GELL BATTERY 24 VOLT (2x 12V) 55a/h
CLEANING AREA	800m ² /HOUR @ 2 kph 8610ft ² /HOUR @ 1.25 mph	RUN TIME (BATTERY LIFE)	1 HRS 30 MINS
BRUSH MOTOR POWER	300W	RECHARGING TIME	10 HRS (Option for external charger)
BRUSH SPEED	100 rpm	INTERNAL CHARGER INPUT	235W
BRUSH DIA	450mm 18in	INTERNAL CHARGER OUTPUT	5A DC
PAD DIA	400mm 16in	BATTERY WEIGHT (TOTAL)	37.6 Kg 82.9 lbs
VAC MOTOR MAX. POWER	400W	HEIGHT	1100mm 43.3in
VAC MOTOR - SUCTION @ SQUEEGEE	120 mbar	LENGTH	890mm (1065mm) 35in (42in)
VAC MOTOR - AIRFLOW @ SQUEEGEE	25.0 l/sec (6.6 US gal/sec)	WIDTH	470mm (805mm) 18.5in (31.7in)
WATER CAPACITY	30L 8 US gal	SQUEEGEE LENGTH	805mm 31.7in
WATER FLOW - AVERAGE	0-2 l/min 0-0.53 US gal/min	SOUND PRESSURE LEVEL	≤70 dB(A)
DRIVE MOTOR POWER/DRIVE SPEED	N/A	VIBRATION LEVEL	HAV ≤1.0 m/s ² HAV ≤3.28 ft/s ²
WATER INGRESS PROTECTION	IPX4	TGB 3045/55(TGB 817/55) & HGB 3045/55	

All components must be ROHS compliant.

TOOL NUMBER: -

WEIGHT:



Numatic
INTERNATIONAL LTD

MILLFIELD ROAD, CHARD, SOMERSET
TA20 2GB ENGLAND



THE EXAMPLE SHOWN DETAILS THE METHOD USED FOR IDENTIFYING CRITICAL (INSPECTION) DIMENSIONS WHERE APPLICABLE

TOLERANCES:- LINEAR: 0 DECIMAL PLACES = +/- 1.0mm
1 DECIMAL PLACE = +/- 0.25mm
2 DECIMAL PLACES = +/- 0.05mm
ANGULAR:- +/- 0.5 DEGREE

TITLE:-
TGB-3045/55 & HGB-3045/55 TECHNICAL SPECIFICATION

DIMENSIONS IN MILLIMETERS
MATERIAL:- -
ITEM No(s):- 904503

FINISH:- -
DRG No:- DRW-21685

A19 UPDATED FOR PROJ-0743

REVISION: CHANGE DETAIL:

Internal Code: PRO
DRAWN: Nick Putt
APPD: KD
DATE: 15/04/2019

THIS DRAWING IS COPYRIGHT AND IS THE PROPERTY OF NUMATIC INTERNATIONAL LTD. AND MUST NOT BE USED WITHOUT THEIR KNOWLEDGE NOR COMMUNICATED TO ANY PERSON OR COMPANY.

PRINT SIZE
A3

NOT TO SCALE

1

ST_Numatic_A3.sldprt 20030224

3

4

5

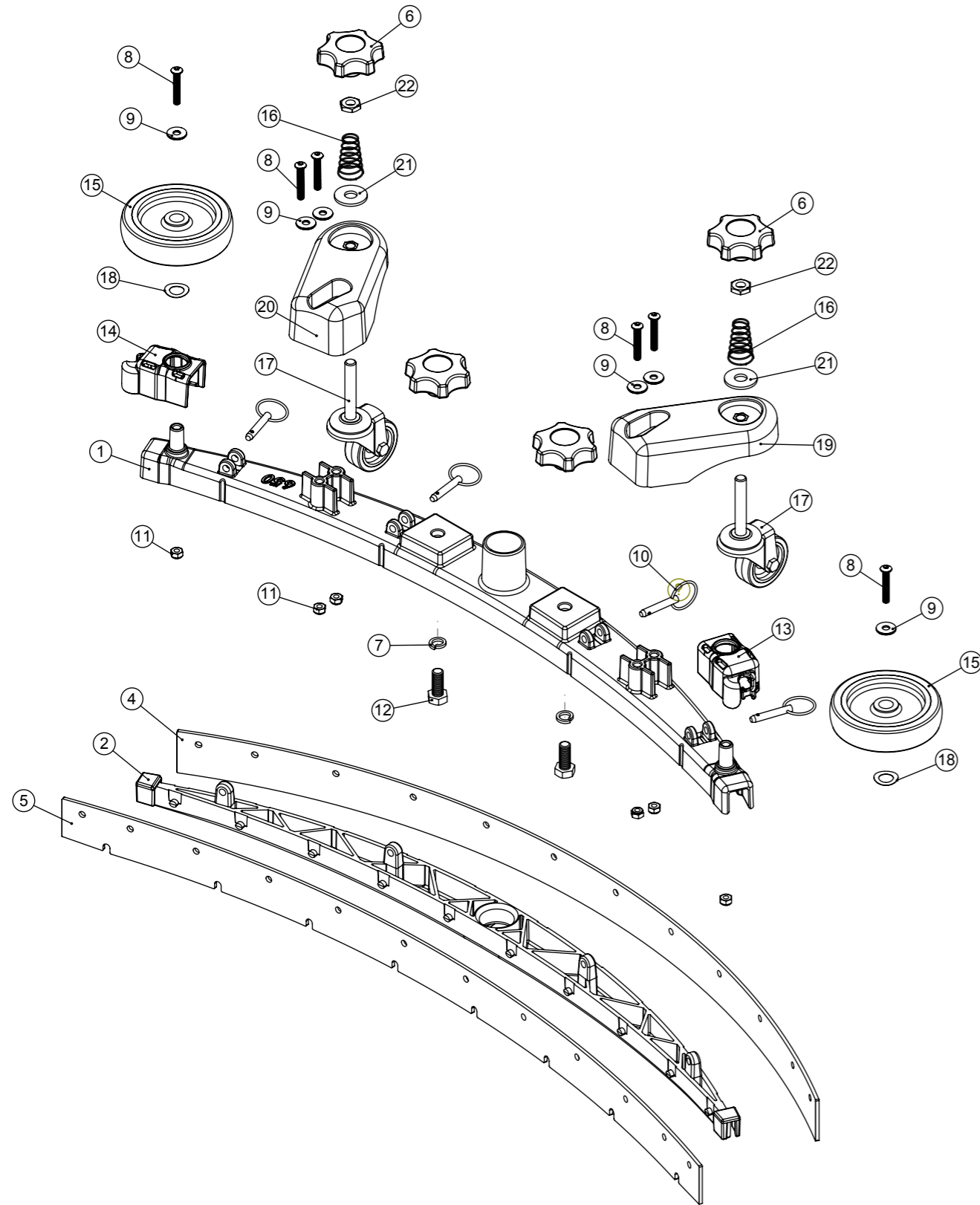
6

Numatic International Spare Parts

Model No: 650 TWINTEC ALUMINIUM FLOOR TOOL (38MM HOSE, RED TRIM, SERILOR BLADES)

Internal Code: 903347
 DRAWING: DRW-22621 ISS:A09
 PRO 27/03/2018

NB: FOR WIRING SEE DRAWING: N/A



Numatic International Spare Parts

Model No: 650 TWINTEC ALUMINIUM FLOOR TOOL (38MM HOSE, RED TRIM, SERILOR BLADES)

ITEM:	PART No:	Description	Qty
1	208198	(650MM SCRUB WIDTH) ALUMINIUM SQUEEGEE CASTING (38MM HOSE FITTING)	1
2	903345	(650MM SCRUB WIDTH) RED BLADE HOLDER MOULDING (SLOPING PROFILE) (32MM & 38MM HOSE FITTING)	1
	900518	650 REPLACEMENT SERILOR GREEN POLYURETHANE BLADES SET	
4	208970	(650MM SCRUB WIDTH) REPLACEMENT (4.0MM / 35-45-35 SHORE A) REAR LAMINATED SERILOR POLY/BLADE (847MM LONG)	1
5	208967	(650MM SCRUB WIDTH) REPLACEMENT (3.2MM / 40 SHORE A) FRONT MONOLAYER SERILOR POLY/BLADE (819MM LONG)	1
6	903281	M10 LOBE KNOB (RED)	4
7	219899	M10 SINGLE COIL STAINLESS STEEL WASHER	2
8	219933	M6 X 35MM SOCKET BUTTON HEAD BOLT STAINLESS STEEL	6
9	219647	M6 FORM G STAINLESS STEEL WASHER	6
10	206953	DETENT PINS	4
11	219642	M6 STAINLESS STEEL NYLON INSERT NUT	6
12	219909	M10 X 25MM LONG HEXAGONAL STAINLESS STEEL SCREW	2
13	237322	RIGHT HAND FLOOR TOOL CLIP MOULDING	1
14	237323	LEFT HAND FLOOR TOOL CLIP MOULDING	1
15	208796	4 INCH WHEEL	2
16	229175	CONICAL SPRING	2
17	907759	50MM DIAMETER GREY TPR TYRED SWIVEL CASTOR C/W M10 X 60 SWAGED STEM.	2
18	219891	13MM WAVEY WASHER	2
19	906860	ADJUSTABLE FLOOR TOOL CASTOR PLASTIC PLATE LEFT	1
20	906859	ADJUSTABLE FLOOR TOOL CASTOR PLASTIC PLATE RIGHT	1
21	291124	M10 PENNY WASHER STAINLESS STEEL	2
22	219951	A4 (STAINLESS STEEL) M10 HEX LOCK NUT (HALF NUT)	2

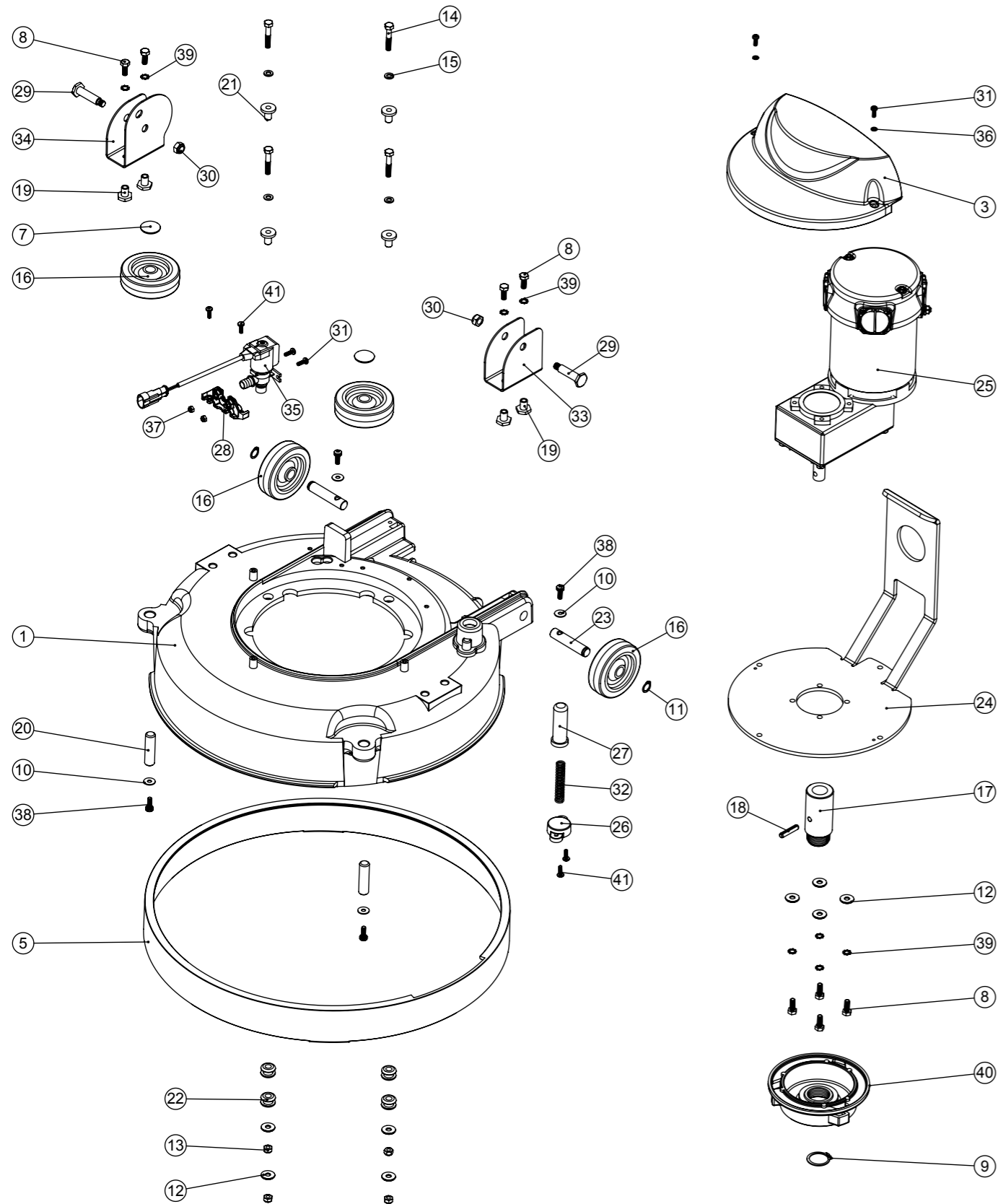
Numatic International Spare Parts

Model No: TGB 3045/4045 (& HGB) BRUSH DECK ASSEMBLY EXPLODED VIEW

Internal Code: 903634
 DRAWING: DRW-22932 ISS:A13
 PRO 15/04/2019

NB: FOR TGB 3045 WIRING SEE DRAWING: DRW-22779

NB: FOR TGB 4045 WD: DRW-22704



Numatic International Spare Parts

Model No: TGB 3045/4045 (& HGB) BRUSH DECK ASSEMBLY EXPLODED VIEW

ITEM:	PART No:	DESCRIPTION	COMMENTS:	QTY.
1	229258	TT 345 GRAPHITE BASE MOULDING (SPARES USE 329090)		1
	904896	HGB3045 RED BASE MOULDING (SPARES USE 905414)	HGB	
3	237380	AMER MOTOR COVER		1
	904897	AMER MOTOR COVER (BLACK)	HGB	
5	229644	450MM DIAMETER SPLASH SKIRT MOULDING		1
	904898	450MM DIAMETER SPLASH SKIRT MOULDING (BLACK)	HGB	
7	204021	12.7MM STAINLESS STEEL HUB CAP		2
8	219719	M6 X 16MM LONG HEXAGONAL STAINLESS STEEL HEAD BOLT		8
9	230048	26MM EXTERNAL CIRCLIP		1
10	219644	M5 FORM G STAINLESS STEEL WASHER		4
11	219345	12MM EXTERNAL CIRCLIP		2
12	219647	M6 FORM G STAINLESS STEEL WASHER		8
13	219642	M6 STAINLESS STEEL NYLON INSERT NUT		4
14	291127	M6 X 35 LONG HEX BOLT STAINLESS STEEL		4
15	219870	M6 FORM A WASHER STAINLESS STEEL		4
16	204068	3 INCH GREY WHEEL		4
17	208727	DRIVE SHAFT		1
18	291079	6MM X 30MM STAINLESS STEEL ROLL PIN		1
19	219606	BRACKET SPACER		4
20	206013	BUFFER WHEEL PIN		2
21	208011	MOTOR MOUNTING SPACER		4
22	229025	STANDARD GROMMET		4
23	229382	REAR WHEEL PIN		2
24	392362	MOTOR ADAPTOR PLATE PAINT SILVER GREY		1
25	205245	AMER 100RPM MOTOR		1
26	223242	PLUNGER MOUNTING PLATE MOULDING		1
27	229128	PLUNGER		1
28	902556	SOLENOID MOUNT MOULDING		1
29	206236	PIVOT PIN		2
30	219639	M8 STAINLESS STEEL NYLON INSERT NUT		2
31	219890	M4 X 12MM LONG POZI PAN STAINLESS STEEL SCREW		4
32	219394	COMPRESSION SPRING		1
33	392249	DECK MOUNT RH		1
34	392248	DECK MOUNT BRACKET		1
35	902949	TERMINATED SOLONOID CABLE.BLACK.125.0M5.2.24		1
36	291145	M4 SHAKEPROOF WASHER STAINLESS STEEL		2
37	219687	M4 STAINLESS STEEL NYLON INSERT NUT		2
38	291132	M5 X 16MM LONG STAINLESS STEEL POZI PAN SEMS SCREW		4
39	902353	M6 EXTERNAL SHAKEPROOF WASHER STAINLESS STEEL		8
40	230207	DIE CAST CHUCK MACHINED		1
41	219569	NO8.1/2 INCH. LG.POZI-PAN.SCREW.STAINLESS STEEL.PLASTITE		4

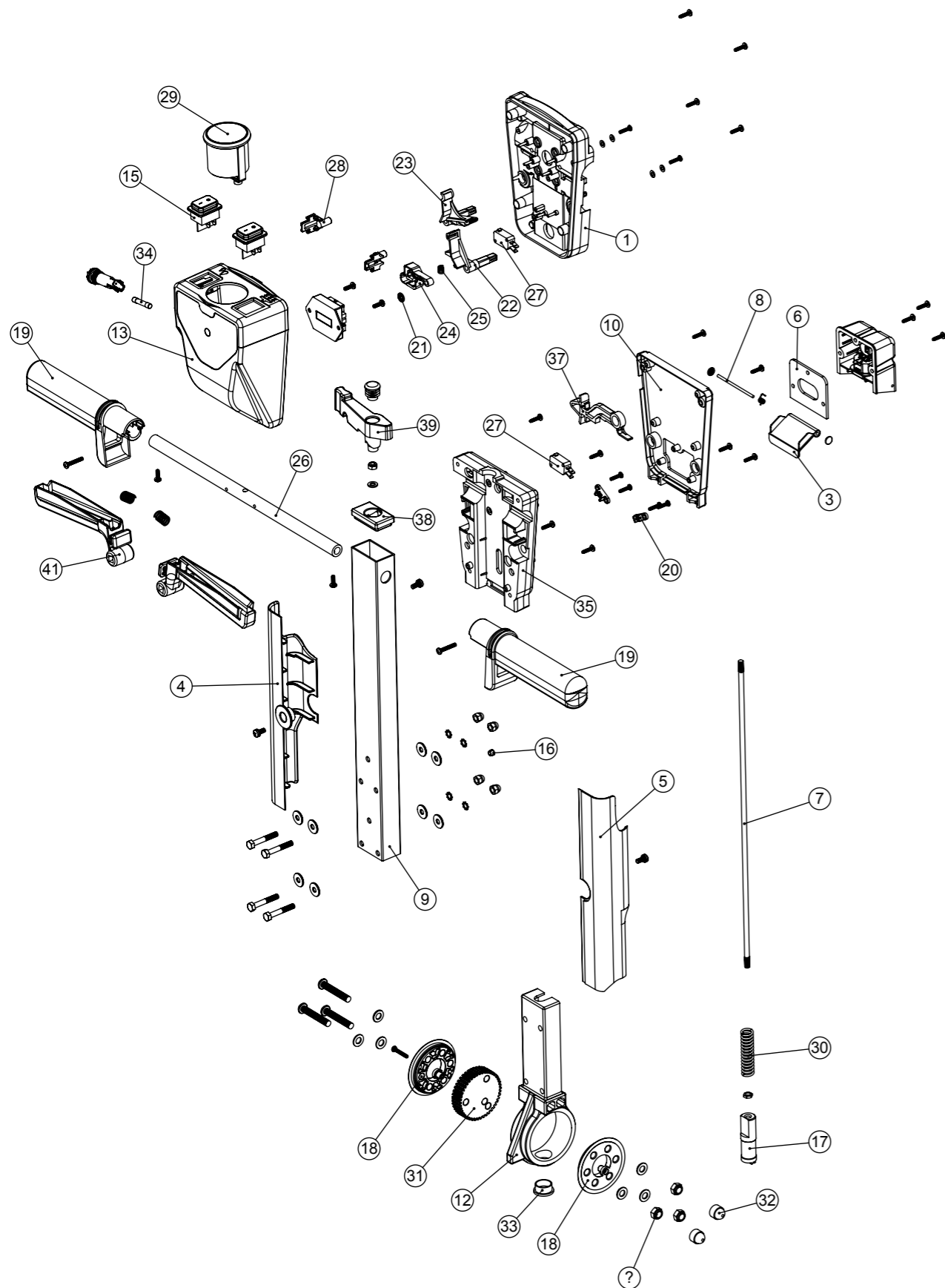
Numatic International Spare Parts

Model No: TGB 3045/4045/4055 (& HGB) HANDLE ASSEMBLY EXPLODED VIEW

Internal Code: 903636
 DRAWING: DRW-22934 ISS:A15
 PRO 15/04/2019

NB: FOR TGB & HGB 3045 WIRING SEE DRAWING: DRW-22779

NB: FOR TGB 4045/4055 WD: DRW-22704



Numatic International Spare Parts

Model No: TGB 3045/4045/4055 (& HGB) HANDLE ASSEMBLY EXPLODED VIEW

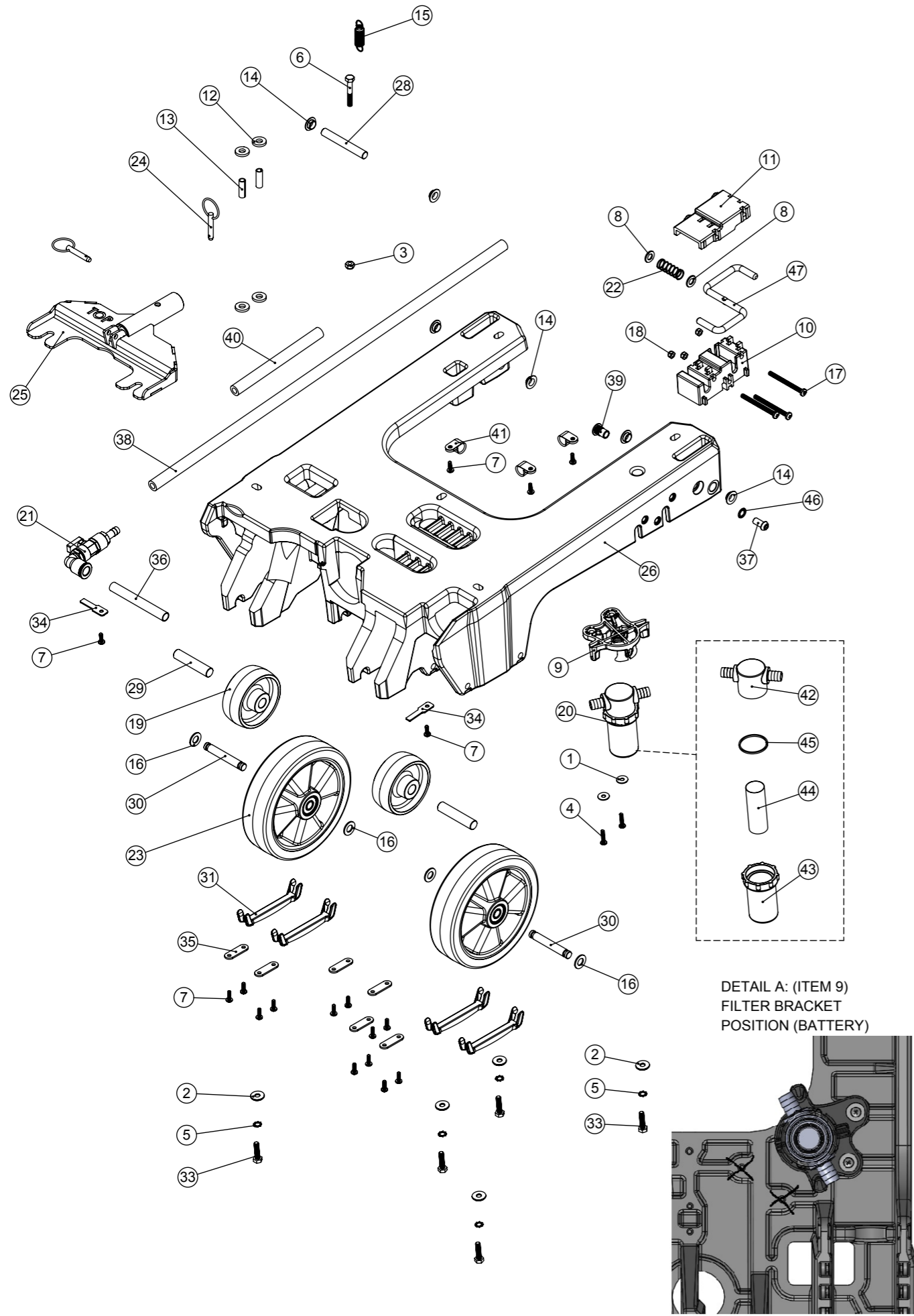
ITEM:	PART No:	DESCRIPTION	COMMENTS:	QTY.
1	227576	FRONT INNER HALF MOULDING	STANDARD TGB MACHINE	1
	237542	FRONT INNER HALF MOULDING (BLACK)	FOR HGB	
	229508	FLAME RETARDANT FRONT INNER HALF MOULDING	FLAME RETARDENT 120V	
3	227781	FLAP MOULDING		1
4	237692	HANDLE CABLE COVER L/H	HGB USE 904907	1
5	237693	HANDLE CABLE COVER R/H	HGB USE 904908	1
6	202105	SOCKET COVER SEALING GASKET		1
7	229461	440MM HANDLE LOCKING ROD		1
8	390979	72MM LONG X 3MM DIAMETER STAINLESS STEEL BAR		1
9	903603	TGB/TTG 430MM PROCESSED ALI HANDLE PAINT SILVER		1
10	303509	MODIFIED REAR COVER	STANDARD TGB MACHINE	1
	905828	MODIFIED REAR COVER MOULDING (BLACK)	FOR HGB	
	303628	FLAME RETARDANT MODIFIED REAR COVER MOULDING	FLAME RETARDENT 120V (+HGB)	
12	900398	HANDLE CASTING MACHINED (HNS VERSION)		1
13	903556	TGB HANDLE FRONT COVER TFPP	STANDARD TGB MACHINE	1
	905846	TGB HANDLE FRONT COVER TFPP BLACK	FOR HGB	
	903560	TGB HANDLE FRONT COVER FRPP	FLAME RETARDENT 120V (+HGB)	
15	902235	SWITCH DPST RED ILLUMINATED WITH MEMBRANE 24V		2
16	229009	BLANKING PLUG		1
17	229073	GEAR LOCKING PIN		1
18	900396	ADJUSTMENT GEAR SPACER		2
19	227580	HAND GRIP MOULDING	HGB USE 237544	2
20	229669	LOLINE HANDLE CABLE CLAMP		2
21	219805	4MM SPIREFIX		1
22	227585	LEFT HAND SWITCH OPERATING LEVER MOULDING		1
23	227586	RIGHT HAND SWITCH OPERATING LEVER MOULDING		1
24	227587	CENTRE SWITCH OPERATING LEVER MOULDING		1
25	219804	SWITCH COMPRESSION SPRING		1
26	338269	CROSS TUBE		1
27	229483	SNAP ACTION SWITCH		2
28	903558	TGB HANDLE BOSS		2
29	902532	BATTERY DISCHARGE INDICATOR + HOUR METER 24V		1
30	229138	SPRING		1
31	900397	MINI ADJUSTMENT GEAR		1
32	903260	BOLT AND NUT CAP		2
33	229099	25MM DIA HOLE PLUG		1
34	903066	FUSE 2.5A (6.3x32)		1
35	227577	REAR INNER HALF MOULDING	STANDARD TGB MACHINE	1
	237543	REAR INNER HALF MOULDING (BLACK)	FOR HGB	
	229509	FLAME RETARDANT REAR INNER HALF MOULDING	FLAME RETARDENT 120V (+HGB)	
37	227584	INTERLOCK LEVER MOULDING		1
38	903546	HANDLE PLUG MOULDING (RED)		1
39	903545	ADJUSTMENT LEVER MOULDING (RED)		1
40	904030	240V EMI FILTER WITH SOCKET COVER ASSEMBLY (PROCESSED)	240V VERSION	1
	904031	120V EMI FILTER WITH SOCKET COVER ASSEMBLY (PROCESSED)	120V VERSION	
41	903547	TRIGGER MOULDING (RED)		2
42	219647	M6 FORM G STAINLESS STEEL WASHER		8
43	219642	M6 STAINLESS STEEL NYLON INSERT NUT		1
44	219639	M8 STAINLESS STEEL NYLON INSERT NUT		3
45	902353	M6 EXTERNAL SHAKEPROOF WASHER STAINLESS STEEL		4
46	219569	No8 X 1/2 INCH LONG POZI PAN STAINLESS STEEL PLASTITE SCREW		2
47	219819	TORSION SPRING		1
48	291125	M6 X 40 LONG HEX BOLT STAINLESS STEEL		4
49	291131	M5 X 12MM LONG STAINLESS STEEL POZI PAN SEMS SCREW		3
50	219493	M6 NYLON WASHER		1
51	219107	No6 X 5/8 INCH LONG POZI PAN PLASTITE SCREW		6
52	219832	3MM DIAMETER STARLOCK		2
53	219206	M4 FORM A WASHER		4
54	219270	No8 X 1/2 INCH LONG POZI PAN SELF TAP SCREW		2
55	219811	NO8 X 1 INCH LONG POZI-PAN SELF TAP SCREW		2
56	20638V	19MM BLACK TUBE END STOP		1
57	219803	TRIGGER COMPRESSION SPRING		2
58	903766	DMH Terminal Block PCB Assembly		1
59	903032	BULGIN PANEL MOUNT FUSEHOLDER		1
60	219764	M6 STAINLESS STEEL DOME NUT		4
61	219578	M8 FORM A STAINLESS STEEL WASHER		6
62	219099	M6 HALF NUT		1
63	219922	M8 X 50MM LONG SOCKET BUTTON HEAD STAINLESS STEEL BOLT		3
64	291150	NO6 X 1 INCH LONG POZI PAN SCREW S/S		1
65	219370	No8 X 5/8 INCH LONG PLASTITE STAINLESS STEEL SCREW		15

Numatic International Spare Parts

Model No: TGB 3045 (& HGB) CHASSIS ASSEMBLY EXPLODED VIEW

Internal Code: 903635
 DRAWING: DRW-22933 ISS:A11
 PRO 15/04/2019

NB: FOR WIRING SEE DRAWING: DRW-22779



Numatic International Spare Parts

Model No: TGB 3045 (& HGB) CHASSIS ASSEMBLY EXPLODED VIEW

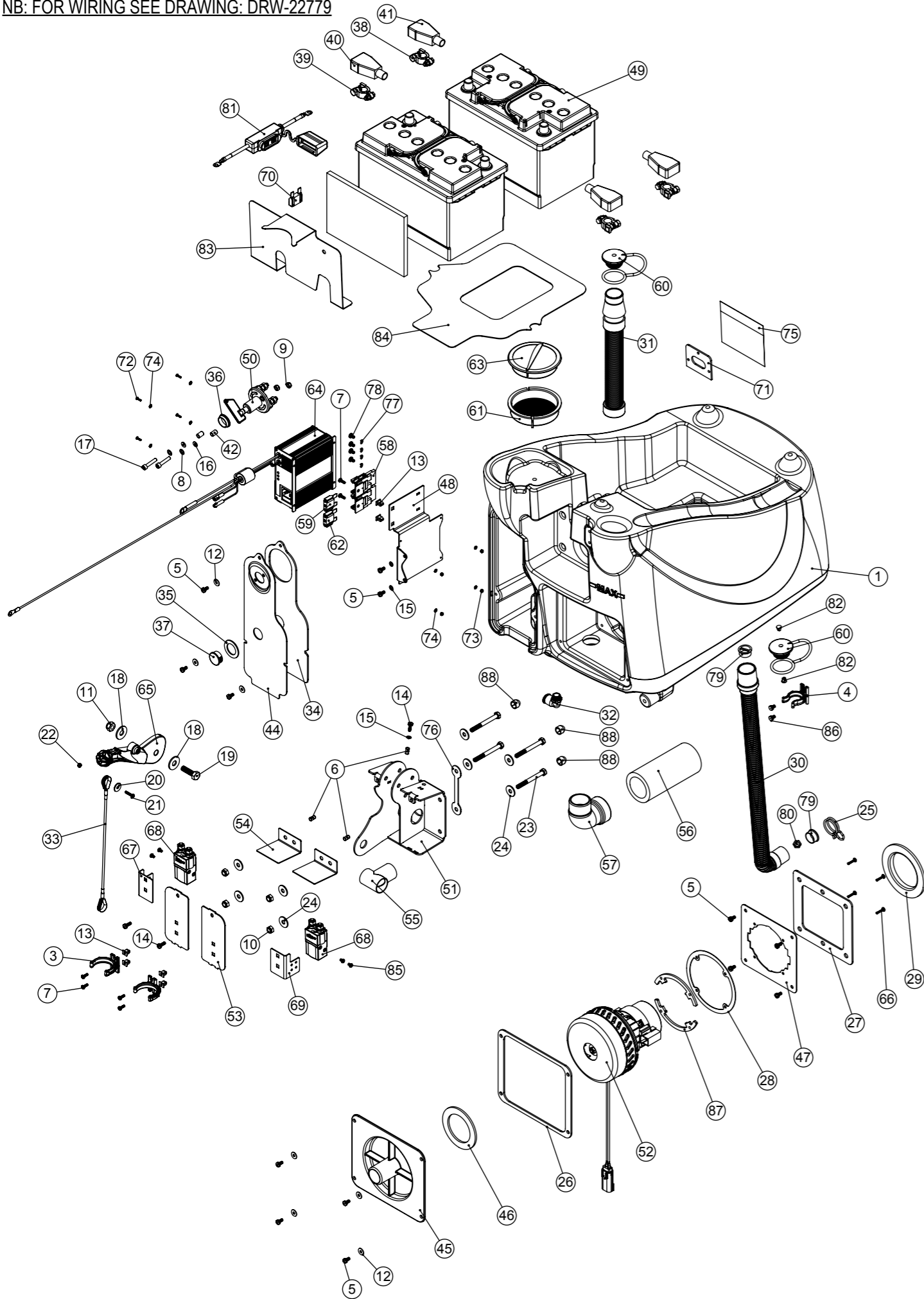
ITEM:	PART No:	DESCRIPTION	COMMENTS:	QTY.
1	219644	M5 FORM G STAINLESS STEEL WASHER		2
2	219647	M6 FORM G STAINLESS STEEL WASHER		5
3	219642	M6 STAINLESS STEEL NYLON INSERT NUT		1
4	219568	NO8.3/4 INCH LG.POZI-PAN.SCREW.STAINLESS STEEL.PLASTITE		2
5	902353	M6 EXTERNAL SHAKEPROOF WASHER STAINLESS STEEL		5
6	291125	M6 X 40 LONG HEX BOLT STAINLESS STEEL		1
7	219569	NO8.1/2 INCH. LG.POZI-PAN.SCREW.STAINLESS STEEL.PLASTITE		17
8	219578	M8 FORM A STAINLESS STEEL WASHER		2
9	901006	FILTER MOUNTING BRACKET	DETAIL A	1
10	901280	LATCH BLOCK BOTTOM MOULDING		1
11	901279	LATCH BLOCK TOP MOULDING		1
12	206964	SLIDE NYLON SPACER		4
13	206954	SPIRO SPACER		2
14	208312	IGUS BEARING (GFM 101205)		6
15	208619	FLOOR TOOL SPRING		1
16	219903	M10 FORM A STAINLESS STEEL WASHER		4
17	901558	M5 X 60MM STAINLESS STEEL POZI PAN MACHINE SCREW		3
18	219633	M5 STAINLESS STEEL NYLON INSERT NUT		3
19	206713	80MM DIAMETER WHITE WHEEL		2
20	208888	EXTENDED STRAINER		1
21	901543	12MM SWIVEL ELBOW PUSH FIT TO 10MM HOSE TAIL BALL VALVE ASSEMBLY		1
22	208578	DECK LOCK SPRING		1
23	208638	160mm WHEEL WITH POLYURETHENE TYRE		2
24	206953	DETENT PINS		2
25	304466	FLOOR TOOL BRACKET ASSEMBLY (TT/TTB4045/4055)		1
26	903589	TT/B PLASTIC CHASSIS		1
	904902	HGB PLASTIC CHASSIS (BLACK)	HGB	
28	903575	AXLE BAR ST/ST 10MM DIA. 75MM LONG		1
29	903576	AXLE BAR ST/ST 12.7MM DIA. 60MM LONG		2
30	903577	AXLE BAR ST/ST 10MM DIA. 68MM LONG		2
31	903597	AXLE CLIP		4
	905060	AXLE CLIP (BLACK)	HGB	
33	219925	M6 x 25MM LONG STAINLESS STEEL HEX SCREW		5
34	903594	TAP PLATE		2
35	903596	AXLE PLATE		6
36	903573	NYLON TUBE 12MM OD X 10MM ID (96MM +-1.0)		1
37	903566	M8X16MM LONG STAINLESS STEEL SOCKET BUTTON HEAD BOLT		1
38	903580	SILICON TUBE 640MM LONG X 8MM I/D X 14.4MM OD		1
39	903565	M8 STAINLESS STEEL HEADED NUTSERT		1
40	903581	SILICON TUBE 155MM LONG X 8MM I/D X 14.4MM OD		1
41	219465	P-CLIP		3
42	208827	STRAINER BLACK TOP	PART OF ITEM 20 (208888)	1
43	208890	68MM EXTENDED STRAINER CLEAR BOWL	PART OF ITEM 20 (208888)	1
44	208889	EXTENDED STRAINER 50 MESH SCREEN	PART OF ITEM 20 (208888)	1
45	208830	STRAINER GASKET	PART OF ITEM 20 (208888)	1
46	902520	M8 INTERNAL WASHER SHAKEPROOF STAINLESS STEEL		1
47	904440	DECK LATCH BAR		1

Numatic International Spare Parts

Model No: TGB 3045 (& HGB) BOTTOM TANK ASSEMBLY EXPLODED VIEW

Internal Code: 903637
 DRAWING: DRW-21694 ISS:A32
 MS5 15/04/2019

NB: FOR WIRING SEE DRAWING: DRW-22779



Numatic International Spare Parts

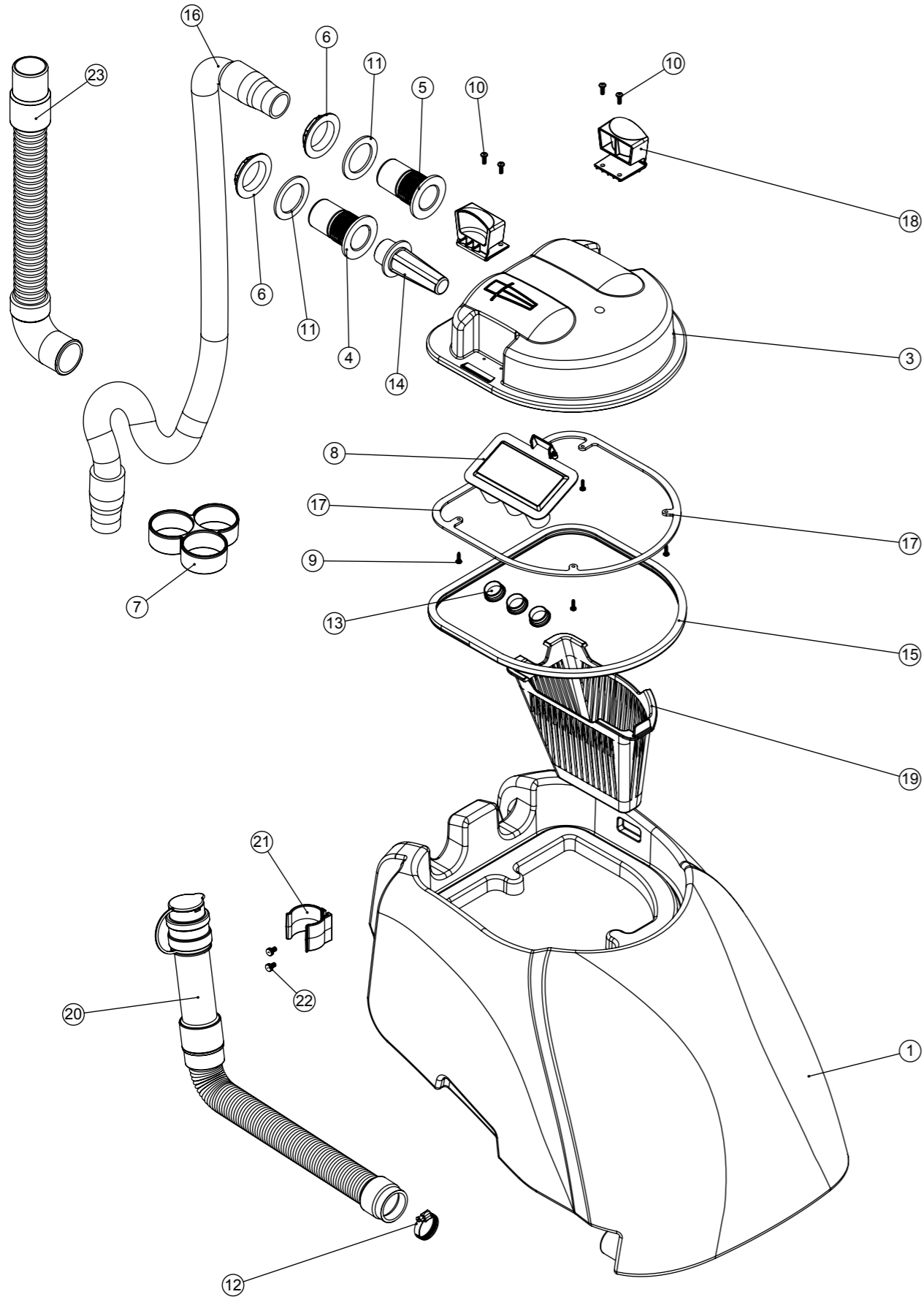
Model No: TGB 3045 (& HGB) BOTTOM TANK ASSEMBLY EXPLODED VIEW

ITEM:	PART No:	Description	Comments	QTY
1	902590	TGB3045 BOTTOM TANK MOULDING (GRAPHITE)		1
	904849	HGB3045 BOTTOM TANK MOULDING (RED - WITH LOGO) (904726 WITHOUT LOGO)	HGB	
3	237754	35-38MM HOSE CLIP		2
4	901916	28mm HOSE CLIP		1
5	291131	M5 X 12MM LONG STAINLESS STEEL POZI PAN SEMS SCREW		13
6	219558	M5 STAINLESS STEEL NUTSERT		3
7	219569	No8 X 1/2 INCH LONG POZI PAN STAINLESS STEEL PLASTITE SCREW		6
8	219560	M6 FORM B STAINLESS STEEL WASHER		2
9	219642	M6 STAINLESS STEEL NYLON INSERT NUT		2
10	219639	M8 STAINLESS STEEL NYLON INSERT NUT		4
11	219897	M10 STAINLESS STEEL NYLON INSERT NUT		1
12	219644	M5 FORM G STAINLESS STEEL WASHER		7
13	900986	NYLON GROMMET NUT (PLASTIC INSERT TO SUIT No 8 PLASTITE SCREW)		6
14	291132	M5 X 16MM LONG STAINLESS STEEL POZI PAN SEMS SCREW		3
15	219355	M5 FORM A STAINLESS STEEL WASHER		3
16	219462	RUBBER WASHER REF NO. 0380810		2
17	219747	M6 X 30MM STAINLESS STEEL CAP HEAD SCREW		2
18	291124	M10 PENNY WASHER STAINLESS STEEL		2
19	219895	M10 X 35MM LONG HEXAGONAL STAINLESS STEEL SCREW		1
20	291118	M5 STAINLESS STEEL WASHER 19MM OD		1
21	219686	M4 X 20MM LONG STAINLESS STEEL POZI PAN MACHINE SCREW		1
22	219687	M4 STAINLESS STEEL NYLON INSERT NUT		1
23	291123	M8 X 75 LONG HEX HEAD BOLT STAINLESS STEEL		4
24	219716	M8 FORM G STAINLESS STEEL WASHER		8
25	902133	SPRING WIRE CLAMP (YDNAC-Y8010356)		1
26	902275	VAC PLATE GASKET		1
27	208799	TT MOTOR PLATE GASKET		1
28	202139	MOTOR GASKET		1
29	202008	MOTOR CAP GASKET		1
30	213025	DUMP HOSE		1
31	208960	TTB/TT FILLING HOSE		1
32	901539	ELBOW ANGLE CONNECTOR 3/8 PARALLEL THREAD C/W O-RING TO 12MM PUSH IN		1
33	208962	TT LIFTING WIRE		1
34	902708	CHARGER & PCB PLATE GASKET		1
35	902328	WINDOW PLUG GASKET		1
36	902331	QF PVC GROMMET (26MM X 22MM X 2MM)		1
37	206314	WINDOW PLUG		1
38	220455	BATTERY TERMINAL CONVERTOR		2
39	220454	POSITIVE BATTERY TERMINAL CONVERTER		2
40	208935	RED BATTERY TERMINAL COVER (415N8V02)		2
41	208936	BLACK BATTERY TERMINAL COVER (415N8V14)		2
42	229744	SPACER		2
43	208645	FOAM BATTERY SPACER		1
44	902707	CHARGER & PCB COVER PLATE		1
45	907553	VAC MOTOR PLATE MOULDING		1
46	907507	4MM THICK SEALING RING		1
47	902709	VAC MOTOR PLATE (CCL)		1
48	902706	CHARGER & PCB BRACKET		1
49	220868	12V TRACTION BLOCK BATTERY	Sales use packed item No. 205085 56 AMP/HOUR BATTERY	2
50	206746	MASTER KEY SWITCH & KEY		1
51	903612	TGB 3045 HANDLE MOUNT WELD ASSEMBLY Z/PL		1
52	903292	VAC MOTOR ASSEMBLY		1
53	903539	HANDLE MOUNT COVER PAINTED SILVER		2
54	903599	COVER PLATE		2
55	903600	T SHAPE DIP MOULDING		1
56	208956	SILENCER FOAM TUBE 150MM		1
57	208583	DIP MOULDED ELBOW (MAINS VERSION)		1
58	230102	FUSE HOLDER RATED AT 60 AMPS		2
59	230104	30 AMP MAXI FUSE		1
60	903341	32MM HOSE CAP RED (C/W 8MM HOLE)		2
61	903543	CLEAN TANK INLET FILTER (RED)		1
62	221091	20 AMP MAXI FUSE		1
63	903544	FILLER CAP LID (RED)		1
64	903533	SPE CHARGER ASSEMBLY C/W INHIBIT		1
65	902324	RED SQUEEGEE LIFT HANDLE		1
66	219568	NO8 3/4 INCH LG.POZI-PAN.SCREW.STAINLESS STEEL.PLASTITE		4
67	903598	CONTACTOR PLATE (LEFT)		1
68	903736	24V ALBRIGHT CONTACTOR (SU60-2009)		2
69	903737	CONTACTOR PLATE (RIGHT)		1
70	221047	40 AMP MAXI FUSE		1
71	202105	SOCKET COVER SEALING GASKET		1
72	902534	M3 X 10MM LONG POZI PAN SCREW STAINLESS STEEL		4
73	291154	M3 NYLON INSERT NUT STAINLESS STEEL		4
74	904219	M3 STAINLESS STEEL EXTERNAL SHAKEPROOF WASHER		8
75	904220	SPLASH GUARD SHEET		1
76	904283	CABLE RESTRAINT		1
77	219861	M5 SINGLE COIL STAINLESS STEEL WASHER		4
78	219864	M5 X 8MM LONG POZI-PAN SCREW Z/PL		4
79	904108	FLOAT STOP MOULDING		2
80	904109	FLOAT MOULDING		1
81	903761	WATERPROOF BATTERY FUSE HOLDER.246.RING.RING		1
82	904403	BARBED RIVET BLACK		2
83	904729	WIRE & BATTERY PLATE (PP)		1
84	904728	BATTERY SPACER (PP)		1
85	904703	M4 X 6MM LONG POZI-PAN SCREW STAINLESS STEEL	1.6Nm	4
86	291135	M5 X 10MM LONG STAINLESS STEEL POZI PAN SEMS SCREW		2
87	905066	VAC SPACER PLATE		2
88	903260	BOLT AND NUT CAP		3

Numatic International Spare Parts

Model No: TGB 3045 (& HGB) TOP TANK ASSEMBLY EXPLODED VIEW

Internal Code: 903638
 DRAWING: DRW-21692 ISS:A18
 PRO 15/04/2019



Numatic International Spare Parts

Model No: TGB 3045 (& HGB) TOP TANK ASSEMBLY EXPLODED VIEW

ITEM:	PART No:	Description	Comments	QTY
1	N/A	TGB3045 TOP TANK MOULDING		1
	904727	HGB3045 TOP TANK MOULDING (BLACK)	HGB	
3	237381	INTEGRATED CHASSIS SEPARATOR		1
4	237526	38MM RED DRAIN HOSE CONNECTOR		1
5	237018	38MM DRAIN HOSE CONNECTOR		1
6	206116	BLACK NUT		2
7	237718	HOSE GUIDE		1
8	237090	SEPARATOR FLOAT MOULDING (MK 2)		1
9	219852	NO6 X 1/2 LONG POZI PAN STAINLESS STEEL SELF TAP SCREW		4
10	219569	NO8 X 1/2 INCH LONG POZI PAN STAINLESS STEEL PLASTITE SCREW		4
11	219310	RUBBER WASHER		2
12	206209	A.B.A HOSE CLIP		1
13	206315	TUBE END PLUG		3
14	206265	TT/B 345 BARREL FILTER		1
15	208591	NEW SEPARATOR GASKET		1
16	280019	35MM X 690MM LONG 3:1 STRETCH HOSE (SHORT & LONG CUFF)		1
17	392200	FILTER GASKET RING		1
18	902919	CLIP MOULDING (RED)		2
19	906070	MESHLESS FILTER BASKET		1
20	901548	35MM X 250MM STRETCH HOSE (3:1) C/W ADJUSTABLE CUFF + CAP		1
21	237382	ACETAL HOSE CLIP MOULDING		1
22	291135	M5 X 10MM LONG STAINLESS STEEL POZI PAN SEMS SCREW		2
23	905520	VAC HOSE 580MM X Ø38MM		1

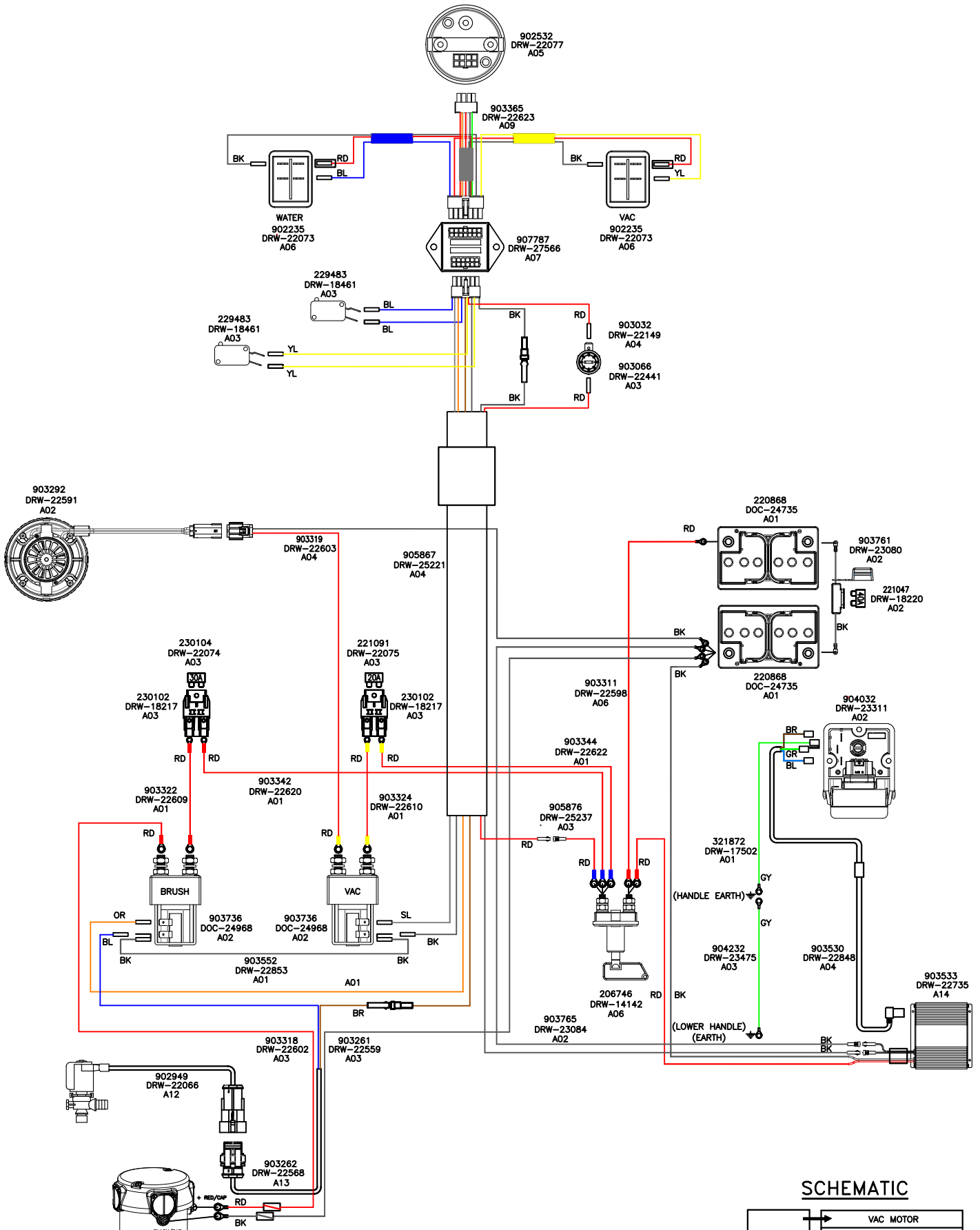
WIRING DIAGRAM

COMP. No
903479

DRG. No
DRW-22779

WIRING DIAGRAM.TWINTEC.1S.3WCR.230.50.NT.PLG

ISSUE	REVISION	DRAWN	APPD.	DATE
A28	SWITCH- 902235 REVISION UPDATE REF PRJ000020	AS	AS	20/02/20



KEY: WIRE COLOURS

BK	- BLACK
BL	- BLUE
BR	- BROWN
GR	- GREEN
GY	- GREEN/YELLOW
OR	- ORANGE
RD	- RED
SL	- SLATE
WH	- WHITE
YL	- YELLOW
P	- PURPLE

SCHEMATIC

