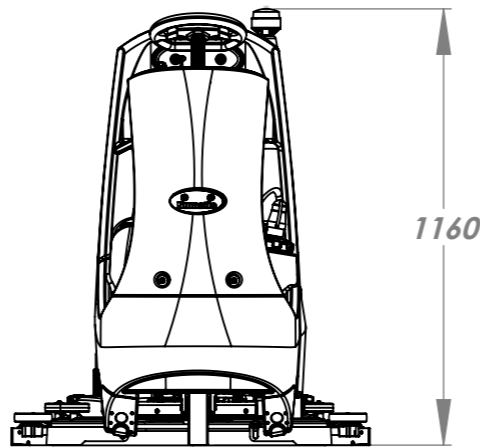
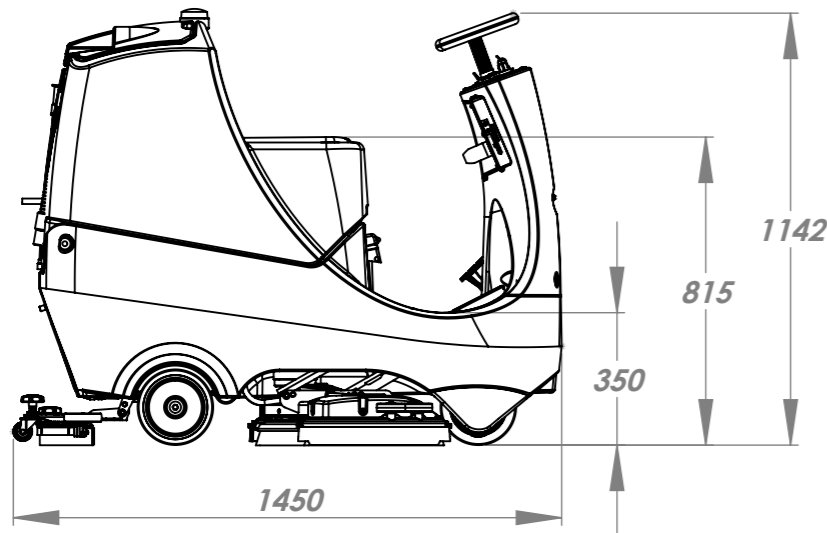
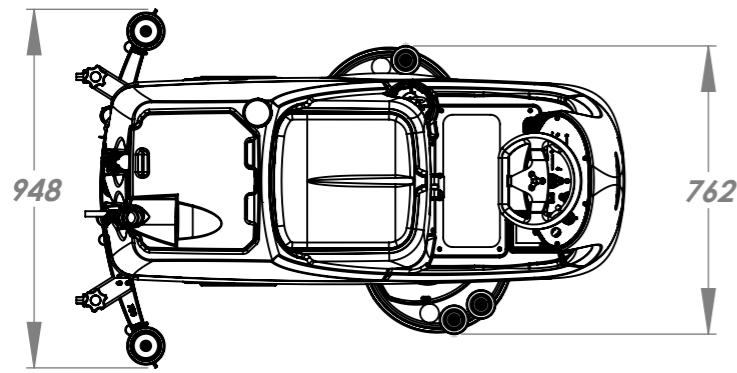


THIRD ANGLE PROJECTION



NET WEIGHT (WITH 120 A/Hr BATTERIES)	220 Kg (484 lbs)	RUN TIME: 2 X 120 A/Hr (12V) BATTERIES	3 Hrs	CAPACITY	80L/80L (21.1/21.1 US GAL)
BRUSH WEIGHT	32 Kg (70 lbs)	RUN TIME: 2 X 100 A/Hr (12V) BATTERIES	2 Hrs	WATER FLOW RATES	0.5/1.0/1.5/2.0/3.0 LITRES/MIN (0.13/0.26/0.39/0.52/0.79 US GAL/MIN)
BRUSH WIDTH	720mm (28.5in) (2X 370MM)	TOTAL BATTERY WEIGHT 120A/Hr	74Kg (163lbs)	CLEANING AREA	2200m ² @3.5Km/Hour (23600ft ² @2.2mph)
BRUSH PRESSURE	19.9 G/cm ² (0.28lb/in ²)	TOTAL BATTERY WEIGHT 100A/Hr	62Kg (136 lbs)	SOUND PRESSURE	<70 dB(A)
PAD WIDTH	700mm (27.5in) (2X 360MM)	CHARGE TIMES 2 x 120 A/Hr	10A CHARGER, 12hrs 20A CHARGER, 7hrs 35A CHARGER, 4.5hrs	HAND ARM VIBRATION	TRAVELLING (QUARRY TILES) 1.84m/s ² (UNCERTAINTY 0.92m/s ²)
PAD PRESSURE	16.6 G/cm ² (0.24lb/in ²)	CHARGE TIMES 2 x 100 A/Hr	10A CHARGER, 8hrs 20A CHARGER, 5-6hrs 35A CHARGER, 3-4hrs	WHOLE BODY VIBRATION	TRAVELLING (QUARRY TILES) 1.11m/s ² (UNCERTAINTY 0.56m/s ²)
BRUSH	600W (24V)	BRUSH SPEED	150 rpm	HEIGHT	1160mm (46.5in)
VAC	400W (24V)	AIRFLOW	24.2 L/Sec (6.4 USGAL/Sec) SUCTION: 120mbar	LENGTH	1450mm (57in)
TRANSAXLE	400W (24V)	TRANSIT SPEED	0- 6 Km/h(0- 3.7mph)	WIDTH	948mm (37.5in)



Numatic INTERNATIONAL LTD MILLFIELD ROAD, CHARD, SOMERSET ENGLAND TA20 2GB

THE EXAMPLE SHOWN DETAILS THE METHOD USED FOR IDENTIFYING CRITICAL (INSPECTION) DIMENSIONS WHERE APPLICABLE

TOLERANCES:- LINEAR: 0 DECIMAL PLACES = +/- 5.0mm
1 DECIMAL PLACE = +/- 0.25mm
2 DECIMAL PLACES = +/- 0.05mm

ANGULAR:- +/- 0.5 DEGREE

TOOL NUMBER: -		TITLE:- CRO 8072 TECHNICAL SPECIFICATION	
WEIGHT:		DIMENSIONS IN MILLIMETERS	MATERIAL:-
Internal Code: MS5		FINISH:-	ITEM No(s):- N/A
DRAWN: SJW	DATE: 04/10/16	DRG No:- DRW-23688	

All components must be ROHS compliant.

REVISION: A01	CHANGE DETAIL: NEW DRAWING
----------------------	-----------------------------------

THIS DRAWING IS COPYRIGHT AND IS THE PROPERTY OF NUMATIC INTERNATIONAL LTD. AND MUST NOT BE USED WITHOUT THEIR KNOWLEDGE NOR COMMUNICATED TO ANY PERSON OR COMPANY.

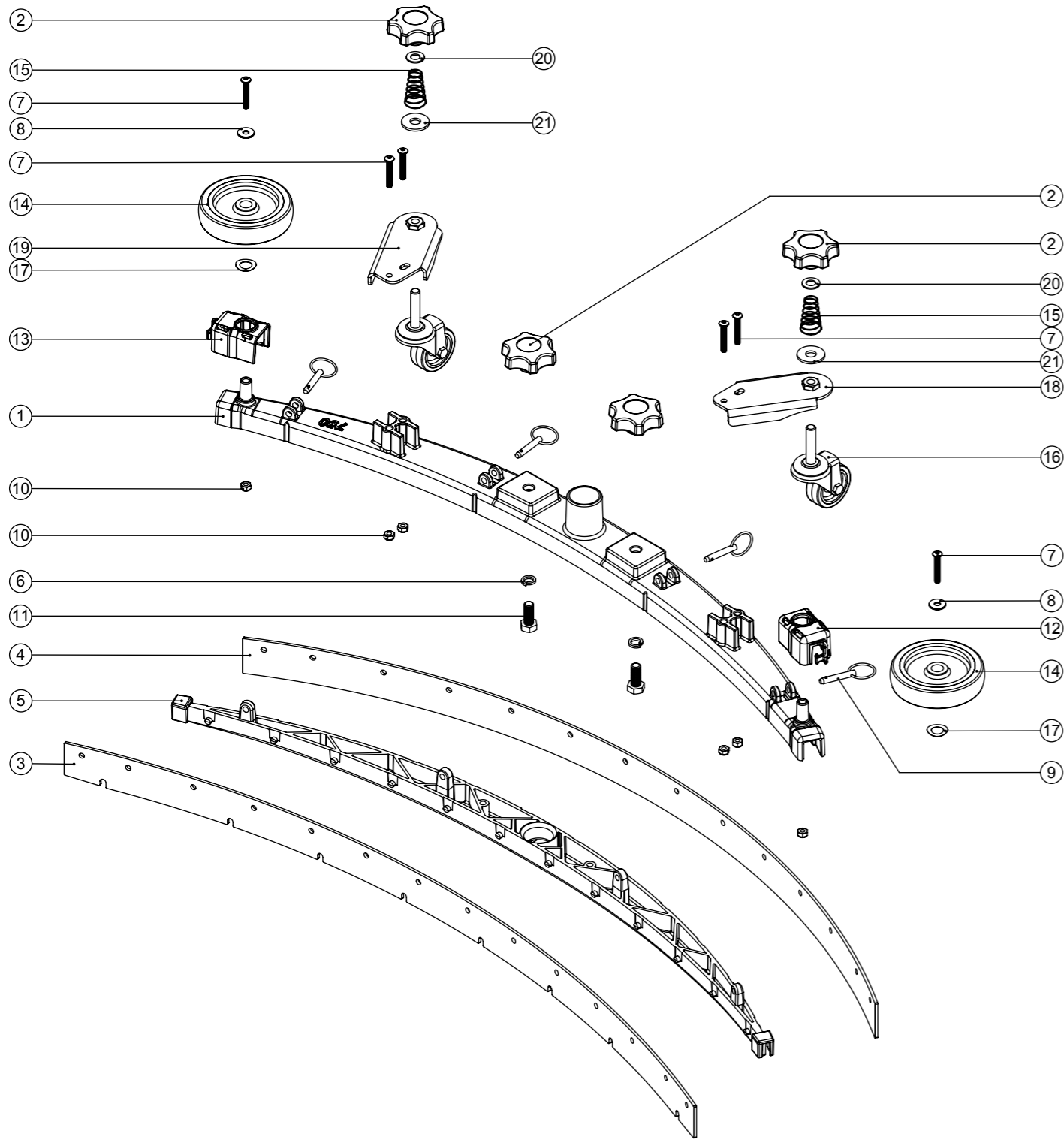
PRINT SIZE **A3**

Numatic International Spare Parts

Model No: 750 TWINTEC ALUMINIUM FLOOR TOOL
(38MM HOSE, RED TRIM, SERILOR BLADES)

Internal Code: 903853
DRAWING: DRW-23157 ISS:A02
MS5 05/08/16

NB: FOR WIRING SEE DRAWING: WD-0???



Numatic International Spare Parts

Model No: 750 TWINTEC ALUMINIUM FLOOR TOOL (38MM HOSE, RED TRIM, SERILOR BLADES)

ITEM:	PART No:	DESCRIPTION	QTY.
1	208637	(750MM SCRUB WIDTH) ALUMINIUM SQUEEGEE CASTING (38MM HOSE FITTING)	1
2	903281	M10 LOBE KNOB (RED)	4
3	208968	750MM SCRUB WIDTH REPLACEMENT FRONT BLADE (968MM LONG)	1
4	208971	750MM SCRUB WIDTH REPLACEMENT REAR BLADE (1000MM LONG)	1
5	903848	(750MM SCRUB WIDTH) RED BLADE HOLDER MOULDING (SLOPING PROFILE) (32MM & 38MM HOSE FITTING)	1
6	219899	M10 SINGLE COIL STAINLESS STEEL WASHER	2
7	219933	M6 X 35MM SOCKET BUTTON HEAD BOLT STAINLESS STEEL	6
8	219647	M6 FORM G STAINLESS STEEL WASHER	2
9	206953	DETENT PINS	4
10	219642	M6 STAINLESS STEEL NYLON INSERT NUT	6
11	219909	M10 X 25MM LONG HEXAGONAL STAINLESS STEEL SCREW	2
12	237322	RIGHT HAND FLOOR TOOL CLIP MOULDING	1
13	237323	LEFT HAND FLOOR TOOL CLIP MOULDING	1
14	208796	4 INCH WHEEL	2
15	229175	CONICAL SPRING	2
16	208497	50MM DIAMETER GREY TPR TYRED SWIVEL CASTORS C/W M10 X 45 SWAGED STEM.	2
17	219891	13MM WAVEY WASHER	2
18	304523	ADJUSTABLE FLOOR TOOL CASTOR PLATE RHS WELD ASSY	1
19	304522	ADJUSTABLE FLOOR TOOL CASTOR PLATE LHS WELD ASSY	1
20	219903	M10 FORM A STAINLESS STEEL WASHER	2
21	291124	M10 PENNY WASHER STAINLESS STEEL	2

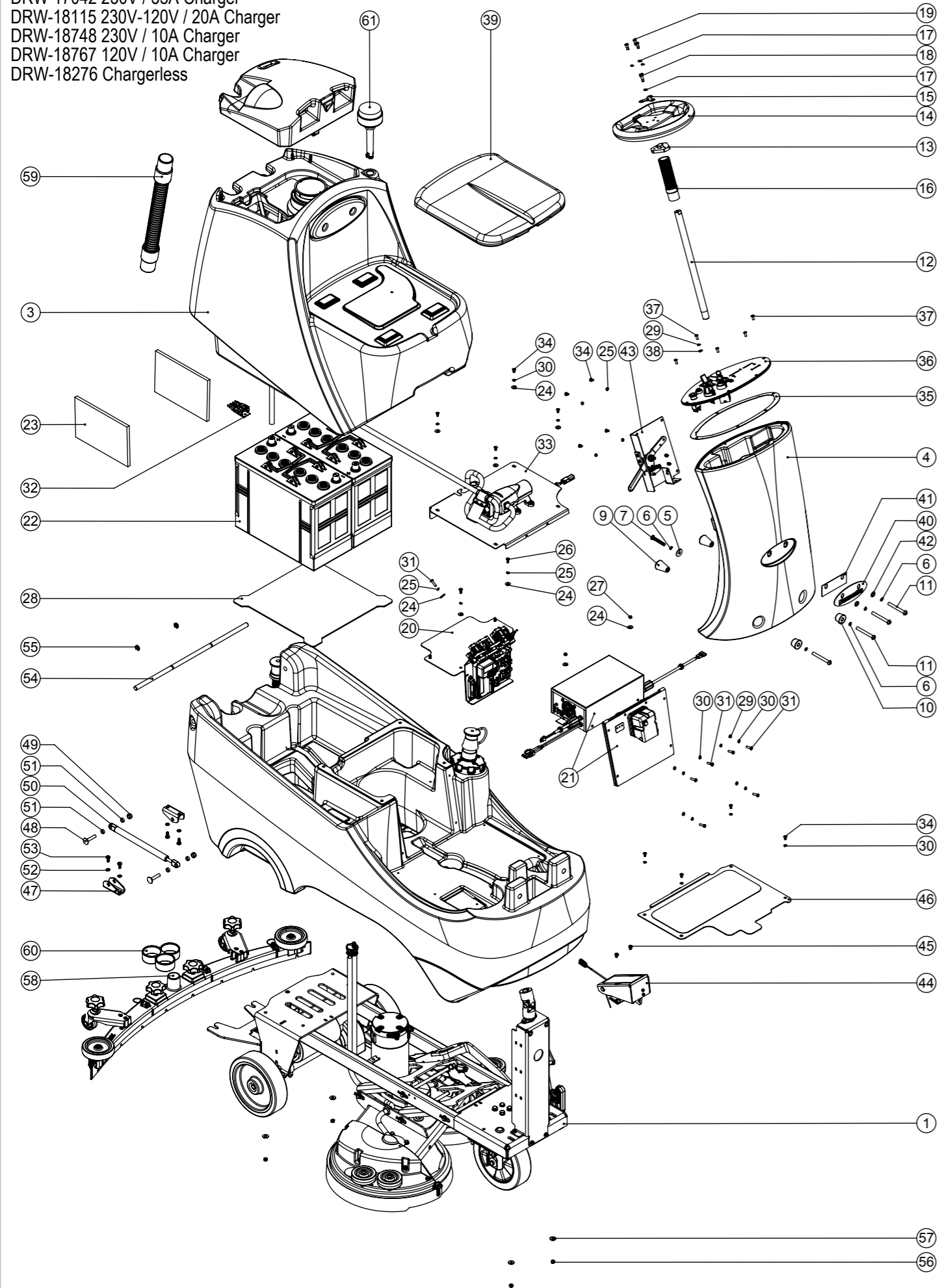
Numatic International Spare Parts

Model No: CRO 8072 EXPLODED DIAGRAM

Internal Code: 903578
 DRAWING: DRW-23970 ISS:A01
 MS5 27/10/2016

NB: FOR WIRING SEE DRAWING:

- DRW-17042 230V / 35A Charger
- DRW-18115 230V-120V / 20A Charger
- DRW-18748 230V / 10A Charger
- DRW-18767 120V / 10A Charger
- DRW-18276 Chargerless



Numatic International Spare Parts

Model No: CRO 8072 EXPLODED DIAGRAM

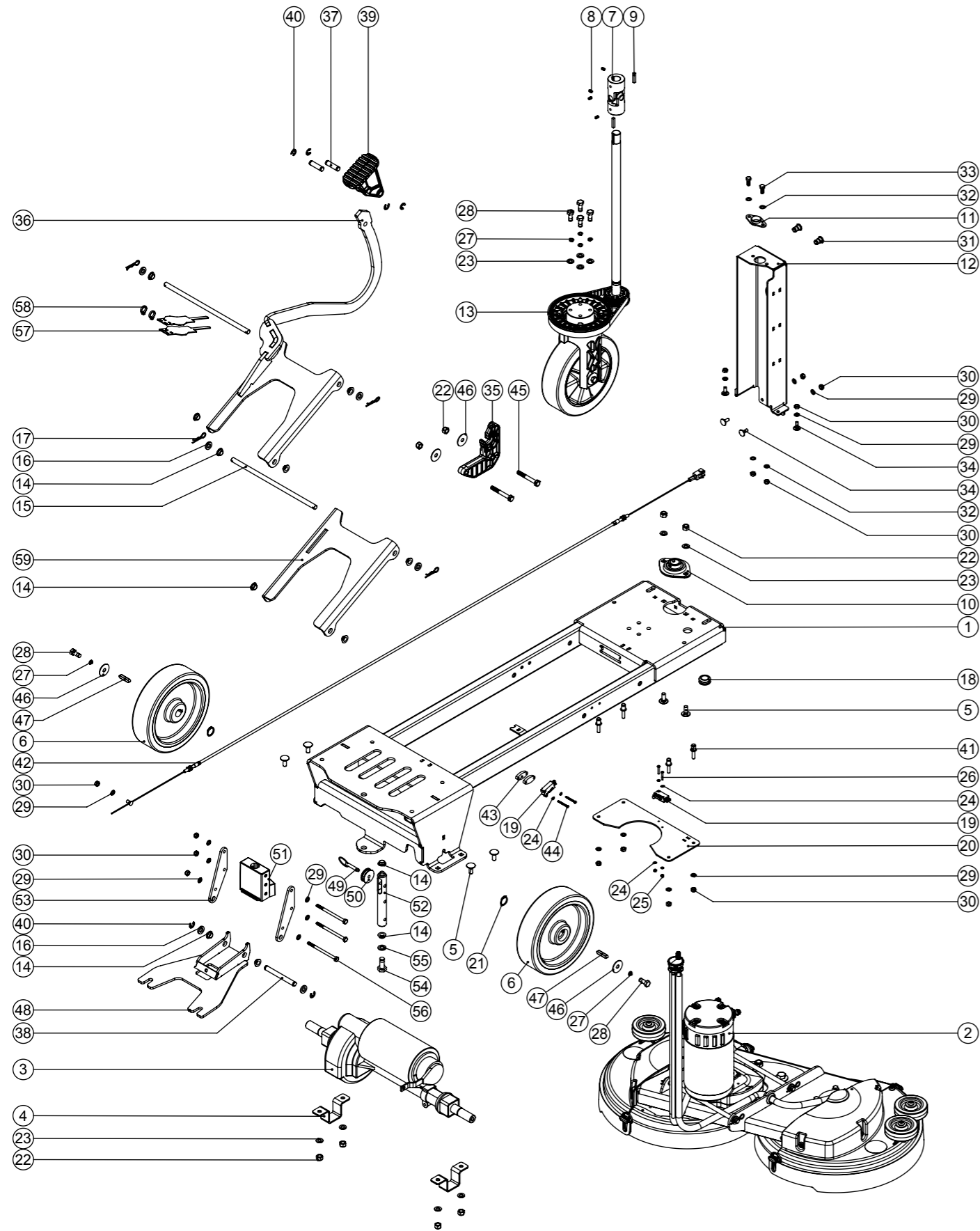
ITEM:	PART No:	DESCRIPTION	COMMENTS:	QTY.
1	903579	CRO8072 CHASSIS GENERAL ASSEMBLY	SEE DRW-23947	1
2	904099	CRO 8055G 8072 BOTTOM TANK ASSY	SEE DRW-17607	1
3	903724	CRO 8055G & 8072 TOP TANK ASSY	SEE DRW-15376	1
4	903721	MINI RIDE ON STEERING COLUMN GRAPHITE		1
5	219716	M8 FORM G STAINLESS STEEL WASHER		1
6	219898	M8 SINGLE COIL STAINLESS STEEL WASHER		5
7	219922	M8 X 50MM LONG SOCKET BUTTON HEAD STAINLESS STEEL BOLT		1
8	903726	CRO SEPARATOR ASSY GRAPHITE	SEE DRW-17590	1
9	208903	TAPERED BUSH (TAPPED)		2
10	208904	TAPERED BUSH (CLEARANCE)		2
11	291142	M8 X 70MM LG SOCKET BUTTON HEAD SCREW STAINLESS STEEL		4
12	208901	UPPER STEERING SHAFT		1
13	404214	STEERING WHEEL PLATE		1
14	208900	GSL 255MM STEERING WHEEL		1
15	392500	STEERING WHEEL TOP PLATE		1
16	380000	STEERING SHAFT COVER HOSE 135mm LONG	208466 CUT TO LENGTH	1
17	219718	WASHER.M6.SPRING.STAINLESS STEEL		4
18	291144	M6 X 20MM LG HEX HEAD SCREW STAINLESS STEEL C/W THREADLOCK		1
19	291143	M6 X 16MM LG SOCKET BUTTON HEAD SCREW STAINLESS STEEL C/W THREADLOCK		3
20	N/A	CRO CHARGER PLATE AND PCB ASSEMBLY	SEE DRW-17539	1
21	N/A	CRO AC SUPPLY PLATE AND CHARGER ASSY	SEE DRW-17570	1
22	230262	SONNENSCHIEIN 120AH BATTERY	CRO8072/120T	2
	205112	100AMP/HOUR REPLACEMENT BATTERY	CRO8072/100T	
23	208645	FOAM BATTERY SPACER		2
24	219644	M5 FORM G STAINLESS STEEL WASHER		9
25	219861	M5 SINGLE COIL STAINLESS STEEL WASHER		7
26	219740	M5 X 12MM LONG STAINLESS STEEL POZI PAN SCREW		2
27	219633	M5 STAINLESS STEEL NYLON INSERT NUT		2
28	392501	BATTERY PLATE		1
29	219355	M5 FORM A STAINLESS STEEL WASHER		5
30	291084	WASHER.M5.SHAKEPROOF.STAINLESS STEEL		14
31	291168	M5 X 20MM LONG SOCKET BUTTON HEAD STAINLESS STEEL SCREW		7
32	230102	FUSE HOLDER RATED AT 60 AMPS		1
33	N/A	CRO 8072 PUMP AND FILTER SUB ASSY	SEE DRW-17506	1
34	291004	M5 X 10MM LONG STAINLESS STEEL BUTTON HEAD SCREW		12
35	203040	CRO CONTROL PANEL GASKET (LOWER)		1
36	904095	CRO DASH ASSY RED TRIM	SEE DRW-17585	1
37	291160	M5 X 12MM LONG STAINLESS STEEL BUTTON HEAD SCREW		5
38	219462	RUBBER WASHER		1
39	208862	SEAT MOULDING		1
40	392433	NUMATIC NAME PLATE		1
41	904177	CRO NAME BADGE BACKING PLATE		1
42	219578	M8 FORM A STAINLESS STEEL WASHER		2
43	903987	FLOOR TOOL LIFTING PLATE ASSEMBLY (RED TRIM)	SEE DRW-16175	1
44	903857	ACCELERATOR PEDAL ASSY (RED TRIM) (EDAC CONNECTOR)	SEE DRW-18638	1
45	291135	M5 X 10MM LONG STAINLESS STEEL POZI PAN SEMS SCREW		2
46	-	FOOTPLATE TREAD PAD POSITION & SEAL POSITION	SEE DRW-17134	1
47	392455	GAS STRUT BRACKET - CARRIAGE BOLT		2
48	291120	M8 X 40 CARRIAGE BOLT S/S		2
49	219639	M8 STAINLESS STEEL NYLON INSERT NUT		2
50	208907	GAS STRUT C/W END FITTINGS 100NM		1
51	291121	NYLON SPACER I/D 8.2MM X O/D 12MM X 5MM LG		4
52	219870	M6 FORM A WASHER STAINLESS STEEL		4
53	219646	M6 X 16MM LONG POZI PAN STAINLESS STEEL SCREW		4
54	208902	MINI RIDE ON PIVOT BAR		1
55	208072	PLASTIC FIXING RING		2
56	219642	M6 STAINLESS STEEL NYLON INSERT NUT		4
57	219647	M6 FORM G STAINLESS STEEL WASHER		4
58	903853	750 TWINTEC ALUMINIUM FLOOR TOOL (38MM HOSE,RED TRIM, SERILOR BLADES)		1
59	213061	SUCTION HOSE 1330MM X Ø38MM		1
60	237718	HOSE GUIDE		1
61	N/A	BEACON MOUNT ASSY	SEE DRW-17381	1

Numatic International Spare Parts

Model No: CRO8072 CHASSIS GENERAL ASSEMBLY EXP

NB: FOR WIRING SEE DRAWING: WD-0???

Internal Code: 903579
 MS5 DRAWING: DRW-23947 ISS:A01
 26/10/16



Numatic International Spare Parts

Model No: CRO8072 CHASSIS GENERAL ASSEMBLY EXP

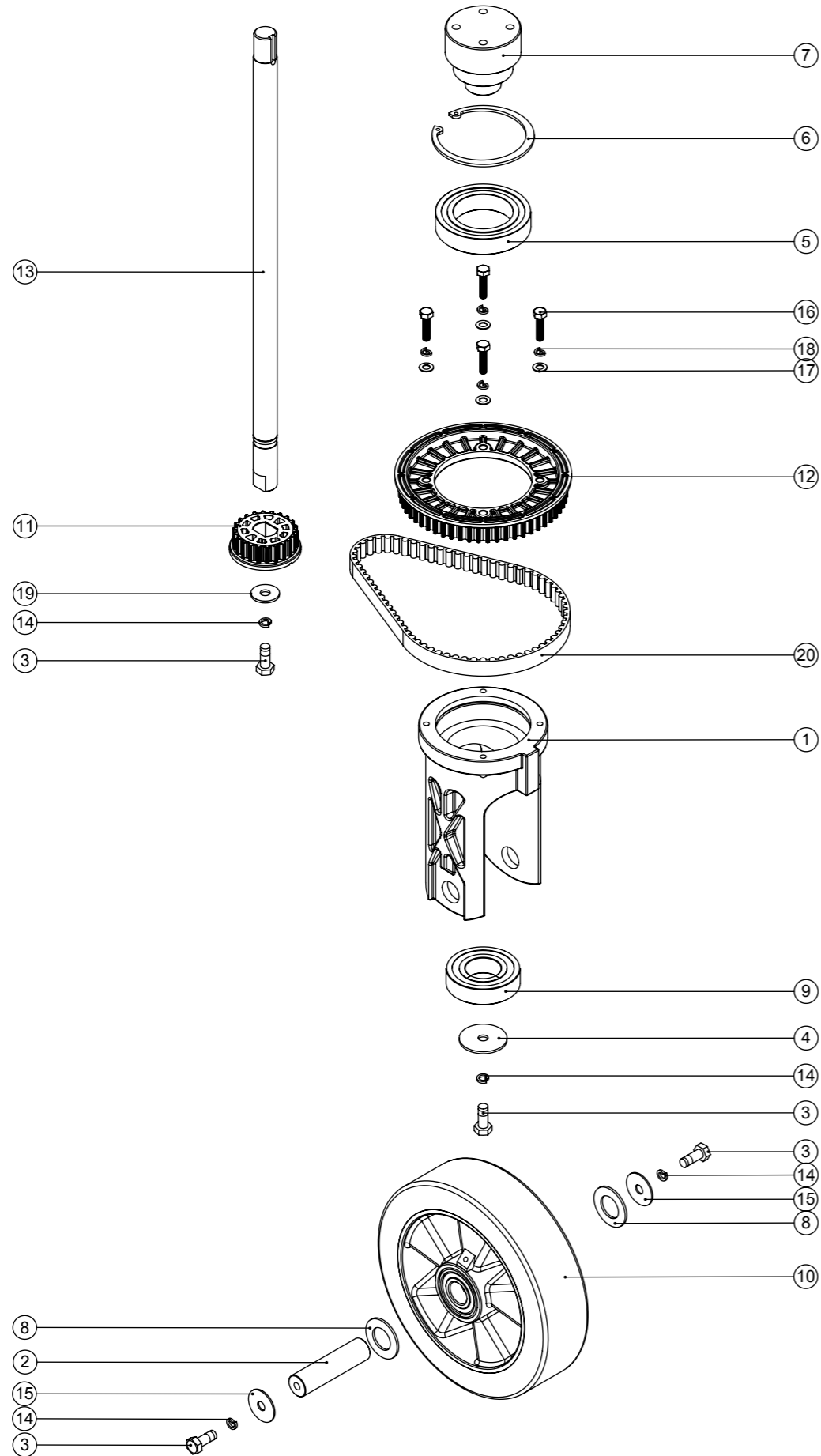
ITEM:	PART No:	DESCRIPTION	COMMENTS:	QTY.
1	304515	MINI RIDE ON CHASSIS WELD ASSEMBLY		1
2	903512	TWIN BRUSH DECK ASSY		1
3	323254	530MM ASI TRANSAXLE 21:1 HIGH SPEED (MK400)	310070 CHAIN TAIL BRAKE KIT	1
4	329780	TRANSAXLE CLAMP		2
5	291104	M8 X 20 COACH BOLT S/S		6
6	901209	200 X 50 TRACTION WHEEL (PLASTIC)		2
7	206936	UNIVERSAL JOINT		1
8	219784	M5 X 8MM LONG BLACKODISED GRUB SCREW		4
9	N/A	KEY WAY	C/W ITEM 7	2
10	208884	2 PART PRESSED FLANGE BEARING		1
11	208110	IGUS (R) 2 BOLT PLAIN BEARING 20MM I/D		1
12	392418	STEERING COLUMN SUPPORT BRKT		1
13	N/A	MINI RIDE ON STEERING ASSEMBLY EXP	SEE DRW-15527	1
14	208330	IGUS BEARING (GFM 101206)		12
15	291101	PIVOT ROD		2
16	219964	NYLON WASHER (18MM O/D X 10.4MM I/D X 3MM THICK)		6
17	291102	SMALL R PIN (S MASTERS 89100 SS)		4
18	208143	20MM GROMMET X 6MM PANEL THICKNESS		1
19	208986	IP RATED MICROSWITCH WITH ROLLER		2
20	392398	SWITCH PLATE		1
21	219889	19MM HEAVY DUTY CIRCLIP		2
22	219639	M8 STAINLESS STEEL NYLON INSERT NUT		8
23	219578	M8 FORM A STAINLESS STEEL WASHER		10
24	219501	M3 FORM A STAINLESS STEEL WASHER		6
25	291154	M3 NYLON INSERT NUT STAINLESS STEEL		2
26	291155	M3 X 20MM LONG POZI PAN SCREW STAINLESS STEEL		2
27	219898	M8 SINGLE COIL STAINLESS STEEL WASHER		6
28	291140	M8 X 20MM LG HEX HEAD SCREW STAINLESS STEEL C/W THREADLOCK		6
29	219870	M6 FORM A WASHER STAINLESS STEEL		15
30	219642	M6 STAINLESS STEEL NYLON INSERT NUT		14
31	219750	M8 HEADED NUTSERT		2
32	219560	M6 FORM B STAINLESS STEEL WASHER		4
33	219719	M6 X 16MM LONG HEXAGONAL STAINLESS STEEL HEAD BOLT		2
34	291103	M6 X 16 COACH BOLT S/S		4
35	237677	LATCH MOULDING		1
36	304513	DECK LINK & PEDAL ARM WELD ASSY		1
37	291097	38 X10MM BAR (E TYPE CLIP)		2
38	291098	94 X10MM BAR (E TYPE CLIP)		1
39	903860	PEDAL MOULDING (RED)		1
40	291107	E TYPE CLIP (TO SUIT 10mm BAR)		6
41	291116	M6 X 25 RIVET STUD		4
42	291099	CRO 8055 SQ. LIFT CABLE		1
43	392498	6MM SWITCH SPACER		2
44	291156	M3 X 30MM LONG POZI PAN SCREW STAINLESS STEEL		2
45	291157	M8 X 60MM LONG HEX BOLT STAINLESS STEEL		2
46	219877	M8 X 30 STAINLESS STEEL WASHER		4
47	206744	6MM X 6MM X 32MM FEATHER KEY		2
48	304516	MOOSE PLATE WELD ASSEMBLY		1
49	206953	DETENT PINS		1
50	208898	NYLON PULLEY 32MM OD		1
51	237676	MULTI BLOCK MOULDING		1
52	291100	SQUEEGEE PIVOT BAR		1
53	392436	PIVOT SIDE PLATE		2
54	291141	M10 X 25MM LG HEX HEAD SCREW STAINLESS STEEL C/W THREADLOCK		1
55	291163	NYLON WASHER 18MM O/D X 10.5MM I/D X 2MM		1
56	291021	M6 X 90MM LONG STAINLESS STEEL HEXAGONAL HEAD BOLT		3
57	392497	SWITCH SPRING PLATE		2
58	220007	BLACK CABLE TIE		2
59	392393	DECK LINK ARM		1

Numatic International Spare Parts

Model No: MINI RIDE ON STEERING ASSEMBLY EXP

Internal Code: N/A
 DRAWING: DRW-15527 ISS:A03
 PRO 15/05/2015

NB: FOR WIRING SEE DRAWING: N/A



Numatic International Spare Parts

Model No: MINI RIDE ON STEERING ASSEMBLY EXP

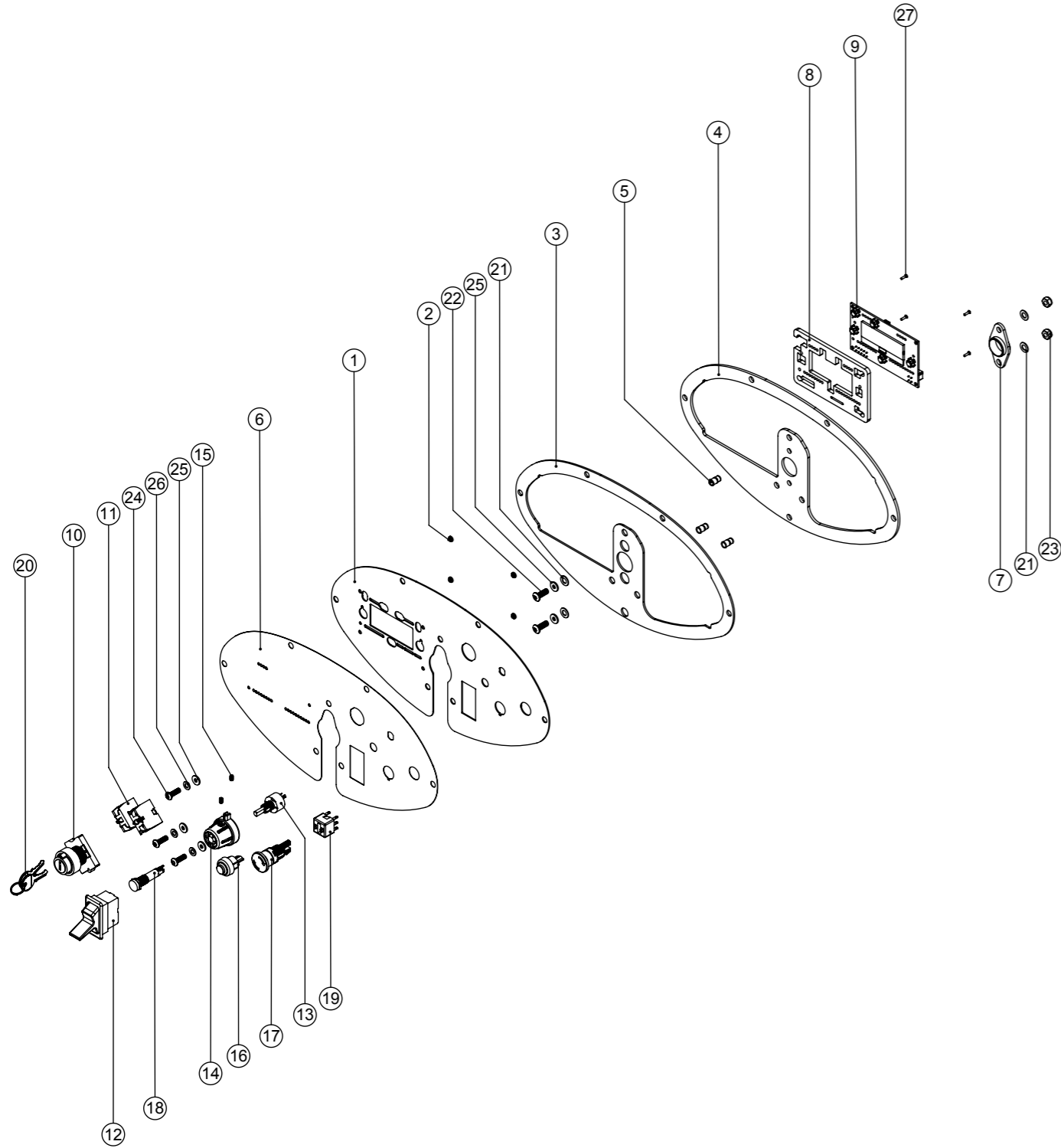
ITEM:	PART No:	DESCRIPTION	COMMENTS:	QTY.
1	208869	STEERING YOKE		1
2	291110	AXLE 20MM OD X 77MM LONG		1
3	291140	M8 X 20MM LG HEX HEAD SCREW STAINLESS STEEL C/W THREADLOCK		4
4	392381	STEERING WASHER		1
5	208871	BEARING I/D50MM O/D80MM		1
6	208872	80MM INTERNAL CIRCLIP		1
7	291109	STEERING SPIGOT		1
8	291162	M20 FORM B STAINLESS STEEL WASHER		2
9	208878	BEARING I/D30MM O/D62MM		1
10	204120	WICKE 200 X 50MM ALU WHEEL		1
11	237679	SMALL PULLEY 22TH		1
12	237680	LARGE PULLEY 56TH		1
13	291108	LOWER STEERING SHAFT		1
14	219898	M8 SINGLE COIL STAINLESS STEEL WASHER		4
15	219877	M8 X 30 STAINLESS STEEL WASHER		2
16	219925	M6 x 25MM LONG STAINLESS STEEL HEX SCREW		4
17	219560	M6 FORM B STAINLESS STEEL WASHER		4
18	219718	M6 STAINLESS STEEL SPRING WASHER		4
19	219716	M8 FORM G STAINLESS STEEL WASHER		1
20	208897	BELT (GATES-GT3 560 8MGT 15MM)		1

Numatic International Spare Parts

Model No: CRO DASH ASSY

Internal Code: 304539, 904095
 MS5 DRAWING: DRW-17585 ISS:A05
 11/10/16

NB: FOR WIRING SEE DRAWING: N/A



Numatic International Spare Parts

Model No: CRO DASH ASSY

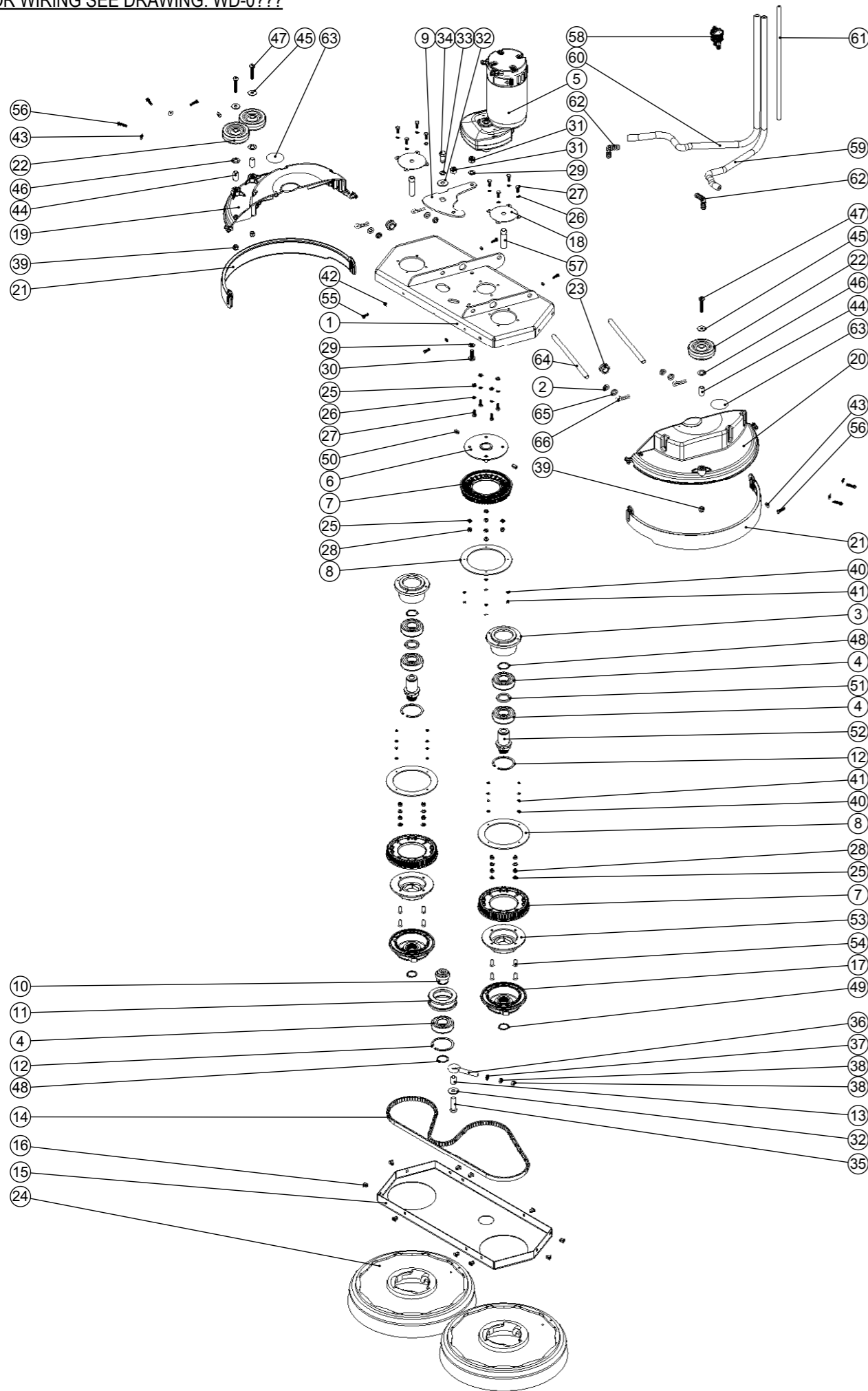
ITEM:	PART No:	DESCRIPTION	COMMENTS:	QTY.
1	392429	TOP PANEL PLATE PAINTED SILVER		1
2	291011	M2 STEEL SELF CLINCH NUT		4
3	203039	CRO CONTROL PANEL GASKET (UPPER)		1
4	392426	CONTROL PANEL PLATE PAINTED SILVER		1
5	219558	M5 STAINLESS STEEL NUTSERT		3
6	208979	CRO CONTROL PANEL OVERLAY		1
7	208110	IGUS (R) 2 BOLT PLAIN BEARING 20MM I/D		1
8	392424	DISPLAY PCB PLASTIC SPACER PLATE		1
9	230275	LCD DISPLAY / INTERFACE	CRO8055/120T (Menzter, Meanwell chargers)	1
	280020	LCD DISPLAY. INTERFACE	CRO8055/100T (Nord charger)	1
10	208138	KEY SWITCH (2 POSITION)		1
11	208137	KEY SWITCH ACTUATOR BLOCK		2
12	206933	PADDLE SWITCH		1
13	270316	POTENTIOMETER TYPE Pe30 22k OHMS 20% 3W (WITH PANEL SEAL) (ROUND SHAFT WITH FLAT / NO SLOT IN SHAFT END)		1
14	329363	SPEED ADJUSTMENT KNOB C/W INSERT	CRO8055 ONLY	1
	903498	SPEED ADJUSTMENT KNOB C/W INSERT RED	CRO8055G & CRO8072 ONLY	1
15	219744	M4 X 6MM LONG BLACKODISED GRUB SCREW		2
16	229454	HANDLE SWITCH		1
17	206901	EMERGENCY STOP (A01ES) 24MM DIAMETER BUTTON		1
18	270291	GREEN LED INDICATOR 2V C/W 2.2K RESISTOR		1
19	208458	SWITCH BLOCK (DOUBLE POLE / 2 POSITION) (A0152B)		1
20	208167	SPARE SET OF KEYS (2 KEYS)		1
21	219560	M6 FORM B STAINLESS STEEL WASHER		4
22	291113	M6 X 16 SOCKET BUTTON HEAD BOLT STAINLESS STEEL		2
23	219642	M6 STAINLESS STEEL NYLON INSERT NUT		2
24	219785	M5 X 16MM LONG BUTTON HEAD STAINLESS STEEL SCREW		3
25	219462	RUBBER WASHER		5
26	219355	M5 FORM A STAINLESS STEEL WASHER		3
27	291172	M2 X 8MM COUNTERSUNK POZI SCREW STAINLESS STEEL		4

Numatic International Spare Parts

Model No: TWIN BRUSH DECK ASSY

NB: FOR WIRING SEE DRAWING: WD-0???

Internal Code: 903512
 DRAWING: DRW-21860 ISS:A08
 MS5 21/11/16



Numatic International Spare Parts

Model No: TWIN BRUSH DECK ASSY

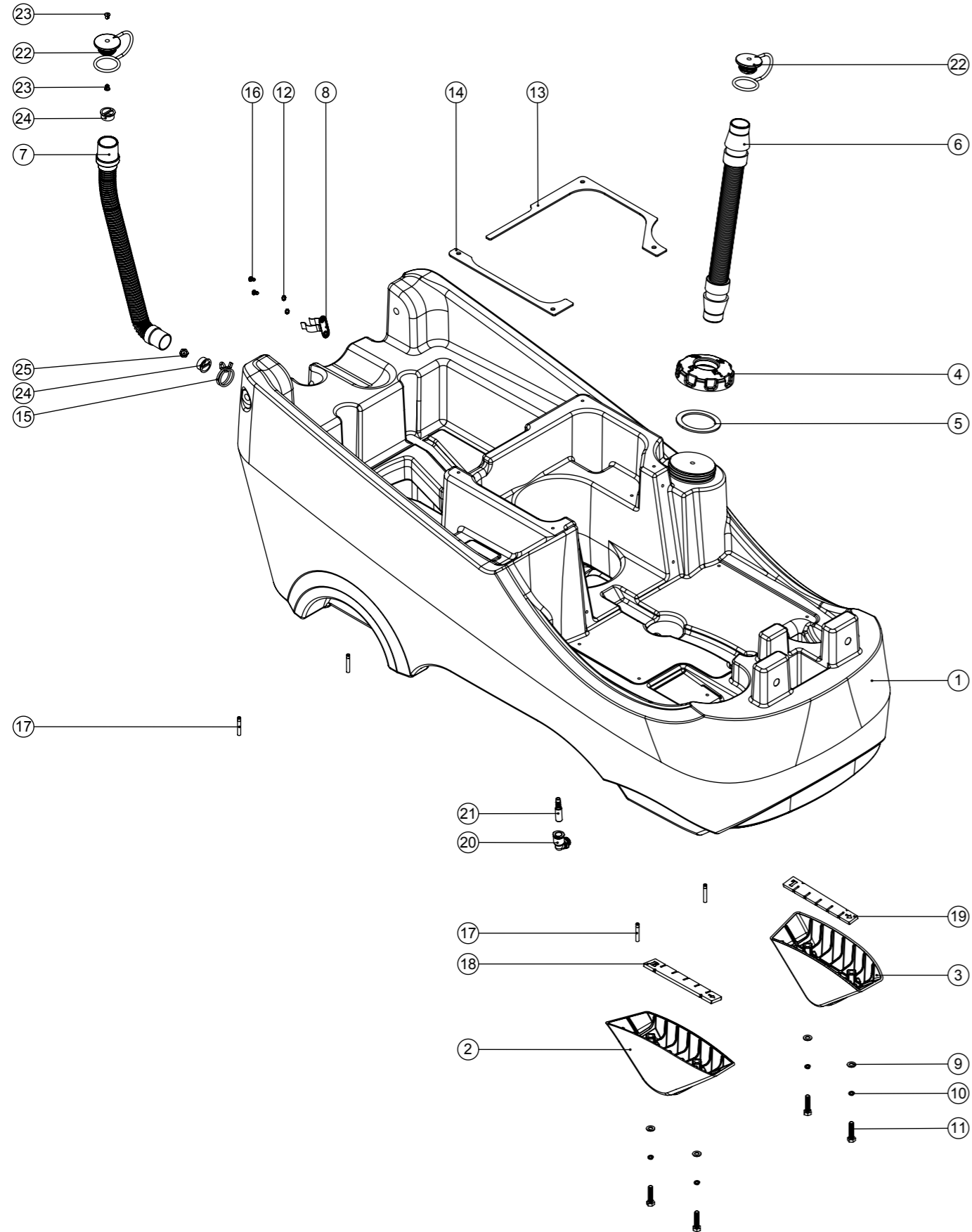
ITEM:	PART No:	DESCRIPTION	QTY.
1	903617	TWIN BRUSH DECK WELD ASSY ZINC PLATED	1
2	208330	IGUS BEARING (GFM 101206)	4
3	903420	BEARING HOUSING	2
4	208878	BEARING I/D30MM O/D62MM	5
5	205192	MRP6 IP20 AMER MOTOR	1
6	904836	BRUSH MOTOR PULLEY PLATE WELD ASSY ZINC PLATED	1
7	237680	LARGE PULLEY 56TH	3
8	903423	PULLEY FLANGE PLATE	3
9	903619	TENSIONER PIVOT PLATE ZINC PLATED	1
10	903419	TENSIONER SHAFT	1
11	903424	IDLER	1
12	230200	62MM INTERNAL CIRCLIP	3
13	903429	1/2 INCH DIA X 18G S/S TUBE (0.022)	1
14	903438	BELT (GATES GT3 - 1440 - 8MGT - 12)	1
15	903428	TWIN BRUSH DECK - MAIN PLATE COVER	1
16	900986	NYLON GROMMET NUT (PLASTIC INSERT TO SUIT No 8 PLASTITE SCREW)	10
17	230285	MODIFIED CHUCK (CRO)	2
18	903432	TWIN BRUSH WATER FEED PLATE	2
19	903433	TWIN BRUSH RH DECK MOULDING	1
20	903434	TWIN BRUSH LH DECK MOULDING	1
21	903437	TWIN BRUSH DECK SPLASH SKIRT	2
22	204068	3 INCH GREY WHEEL	3
23	208143	20MM GROMMET X 6MM PANEL THICKNESS	2
24	903449	370MM POLYSCRUB BRUSH	2
25	219870	M6 FORM A WASHER STAINLESS STEEL	16
26	219718	WASHER.M6.SPRING.STAINLESS STEEL	12
27	219719	M6 X 16MM LONG HEXAGONAL STAINLESS STEEL HEAD BOLT	12
28	219642	M6 STAINLESS STEEL NYLON INSERT NUT	12
29	219903	M10 FORM A STAINLESS STEEL WASHER	2
30	219909	M10 X 25MM LONG HEXAGONAL STAINLESS STEEL SCREW	1
31	219897	M10 STAINLESS STEEL NYLON INSERT NUT	2
32	291124	M10 PENNY WASHER STAINLESS STEEL	2
33	219899	M10 SINGLE COIL STAINLESS STEEL WASHER	1
34	291141	M10 X 25MM LG HEX HEAD SCREW STAINLESS STEEL C/W THREADLOCK	1
35	903430	M10 X 40MM LONG HEXAGONAL STAINLESS STEEL SCREW	1
36	903422	M8 X 80MM EYE BOLT ZINC PLATED	1
37	219578	M8 FORM A STAINLESS STEEL WASHER	1
38	219079	M8 PLAIN NUT	2
39	219639	M8 STAINLESS STEEL NYLON INSERT NUT	3
40	219688	M4 FORM A STAINLESS STEEL WASHER	12
41	291061	No6 X 1/2 INCH LONG POZI PAN PLASTITE SCREW (STAINLESS STEEL)	12
42	219355	M5 FORM A STAINLESS STEEL WASHER	4
43	219644	M5 FORM G STAINLESS STEEL WASHER	6
44	391224	1/2 INCH DIA X 18G S/S TUBE (0.026)	3
45	219716	M8 FORM G STAINLESS STEEL WASHER	3
46	219302	M12 FORM B STAINLESS STEEL WASHER	3
47	219822	M8 X 45MM LONG SOCKET BUTTON STAINLESS STEEL HEAD BOLT	3
48	903435	30MM EXTERNAL CIRCLIP	3
49	230048	26MM EXTERNAL CIRCLIP	2
50	291139	6MM X 16MM STAINLESS STEEL ROLL PIN	2
51	903439	SPACER O/D 40MM X I/D 30MM X 5MM	2
52	903421	BRUSH PULLEY SHAFT	2
53	903440	PULLEY MOUNTING ADAPTER	2
54	903441	M6 X 20MM LONG STAINLESS STEEL COUNTERSUNK POZI SCREW	8
55	219568	NO8.3/4 INCH LG.POZI-PAN.SCREW.STAINLESS STEEL.PLASTITE	4
56	219369	No8 X 1 INCH LONG POZI PAN STAINLESS STEEL PLASTITE SCREW	6
57	903446	MOTOR SHAFT INSERT	2
58	903445	FLOW DIVIDER ASSY	1
59	903447	LH SOLUTION TUBE	1
60	903448	RH SOLUTION TUBE	1
61	903463	VENT TUBE	1
62	903641	10MM HOSETAIL ELBOW	2
63	903845	DO NOT STAND HERE WARNING LABEL Ø50MM	2
64	903436	PIVOT ROD	2
65	219964	NYLON WASHER (18MM O/D X 10.4MM I/D X 3MM THICK)	4
66	291102	SMALL R PIN (S MASTERS 89100 SS)	4

Numatic International Spare Parts

Model No: CRO BOTTOM TANK ASSEMBLY

Internal Code: 599465, 904099
 DRAWING: DRW-17607 ISS:A11
 MS5 22/12/16

NB: FOR WIRING SEE DRAWING: N/A



Numatic International Spare Parts

Model No: CRO BOTTOM TANK ASSEMBLY

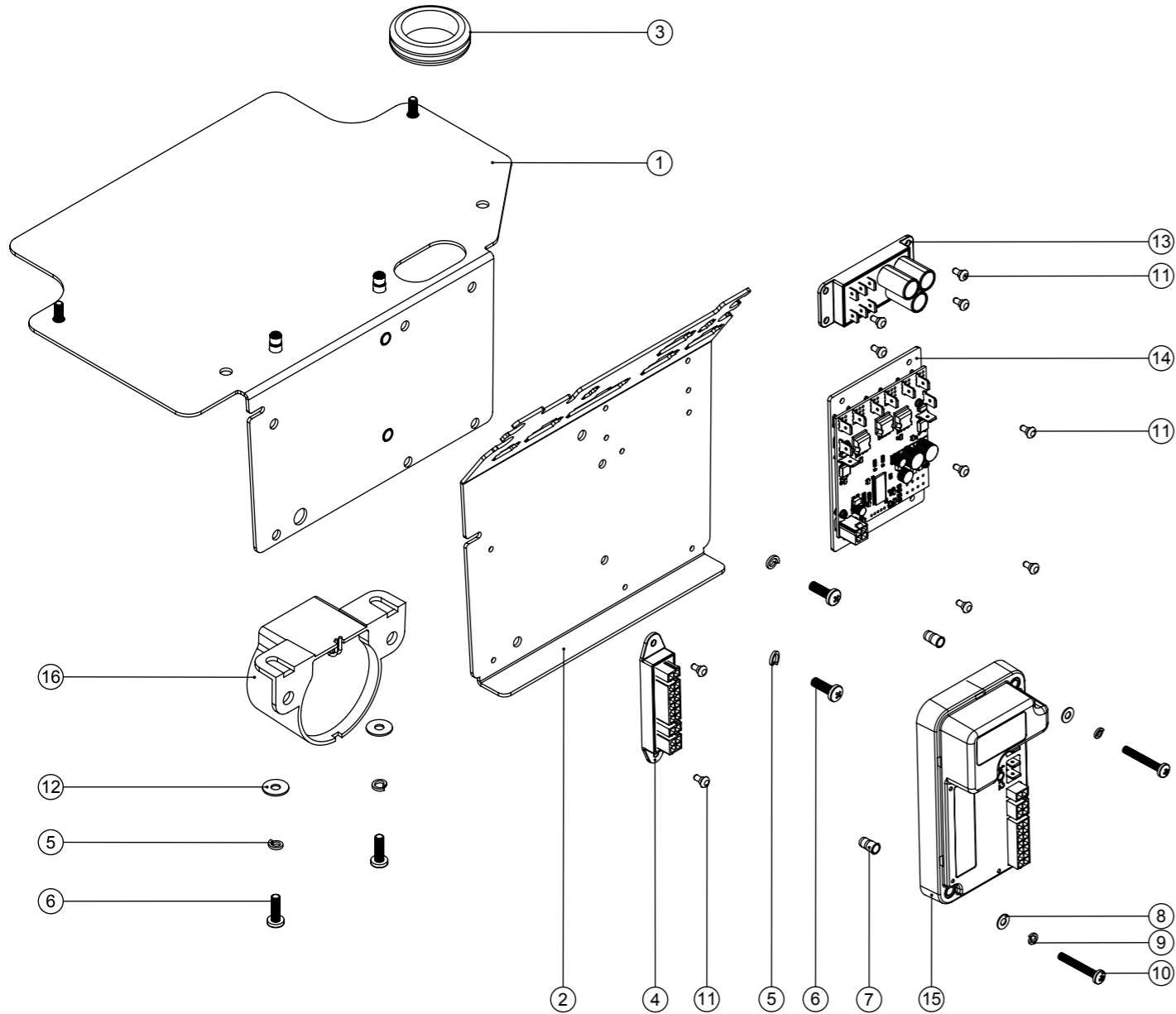
ITEM:	PART No:	DESCRIPTION	COMMENTS:	QTY.
1	237682	MINI RIDE ON BOTTOM TANK		1
2	237684	BOTTOM TANK SCUFF MOULDING RHS		1
3	237685	BOTTOM TANK SCUFF MOULDING LHS		1
4	237174	FILLER CAP WITH FILLER HOSE HOLE		1
5	208564	FILLER CAP SEALING RING		1
6	206842	420MM LONG BLACK STRETCH HOSE C/W CUFFS		1
7	208938	25MM X 455MM LG DUMP HOSE		1
8	206818	HOSE CLIP		1
9	219578	M8 FORM A STAINLESS STEEL WASHER		4
10	219898	M8 SINGLE COIL STAINLESS STEEL WASHER		4
11	291112	M8 X 40 LONG HEX BOLT STAINLESS STEEL		4
12	291020	M5 STAINLESS STEEL EXTERNAL SHAKEPROOF LOCK WASHER		2
13	203027	CRO PUMP PLATE GASKET LH		1
14	203028	CRO PUMP PLATE GASKET RH		1
15	902133	SPRING WIRE CLAMP (YDNAC-Y8010356)		1
16	291004	M5 X 10MM LONG STAINLESS STEEL BUTTON HEAD SCREW		2
17	291158	M6 X 40MM LONG GRUB SCREW STAINLESS STEEL C/W THREADLOCK		4
18	392464	RHS SCUFF MOULDING SPACER		1
19	392465	LHS SCUFF MOULDING SPACER		1
20	901539	ELBOW ANGLE CONNECTOR 3/8 PARALLEL THREAD C/W O-RING TO 12MM PUSH IN		1
21	901534	PUSH IN BARBED CONNECTOR - 12MM OD 8MM ID		1
22	903341	32MM HOSE CAP RED (C/W 8MM HOLE)		2
23	904403	BARBED RIVET BLACK		2
24	904108	FLOAT STOP MOULDING		2
25	904109	FLOAT MOULDING		1

Numatic International Spare Parts

Model No: CRO CHARGER PLATE AND PCB ASSEMBLY

Internal Code: N/A
 PRO DRAWING: DRW-17539 ISS:A05
 15/05/2015

NB: FOR WIRING SEE DRAWING: N/A



Numatic International Spare Parts

Model No: CRO CHARGER PLATE AND PCB ASSEMBLY

ITEM:	PART No:	DESCRIPTION	COMMENTS:	QTY.
1	SEE TABLE BELOW	CRO CHARGER SUPPORT PLATE ASSY		1
2	392420	PCB & IDRIVE SUPPORT PLATE		1
3	208029	GROMMET (32MM I/D)		1
4	208909	POTTED TERMINAL BLOCK ASSEMBLY		1
5	219861	M5 SINGLE COIL STAINLESS STEEL WASHER		4
6	219547	M5 X 16MM LONG POZI PAN STAINLESS STEEL SCREW		4
7	291148	M4 NUTSERT STAINLESS STEEL		2
8	219688	M4 FORM A STAINLESS STEEL WASHER		2
9	291146	M4 SINGLE COIL SPRING WASHER STAINLESS STEEL		2
10	219913	M4 X 30MM LONG POZI PAN STAINLESS STEEL SCREW		2
11	208963	SNAP BLACK RIVET (REF SR-3055B)		10
12	219644	M5 FORM G STAINLESS STEEL WASHER		2
13	208988	HF RESERVOIR CAPACITOR PCB		1
14	280004	DC DRIVE PCB		1
15	330196	PROGRAMMED MOTOR CONTROLLER (CRO 8055)		1
16	323263	HORN		1

PART No.	DESCRIPTION
392423	CRO MENTZER CHARGER SUPPORT PLATE ASSY*
392457	CRO MEANWELL CHARGER SUPPORT PLATE ASSY
392458	CRO NORD 15A CHARGER SUPPORT PLATE ASSY

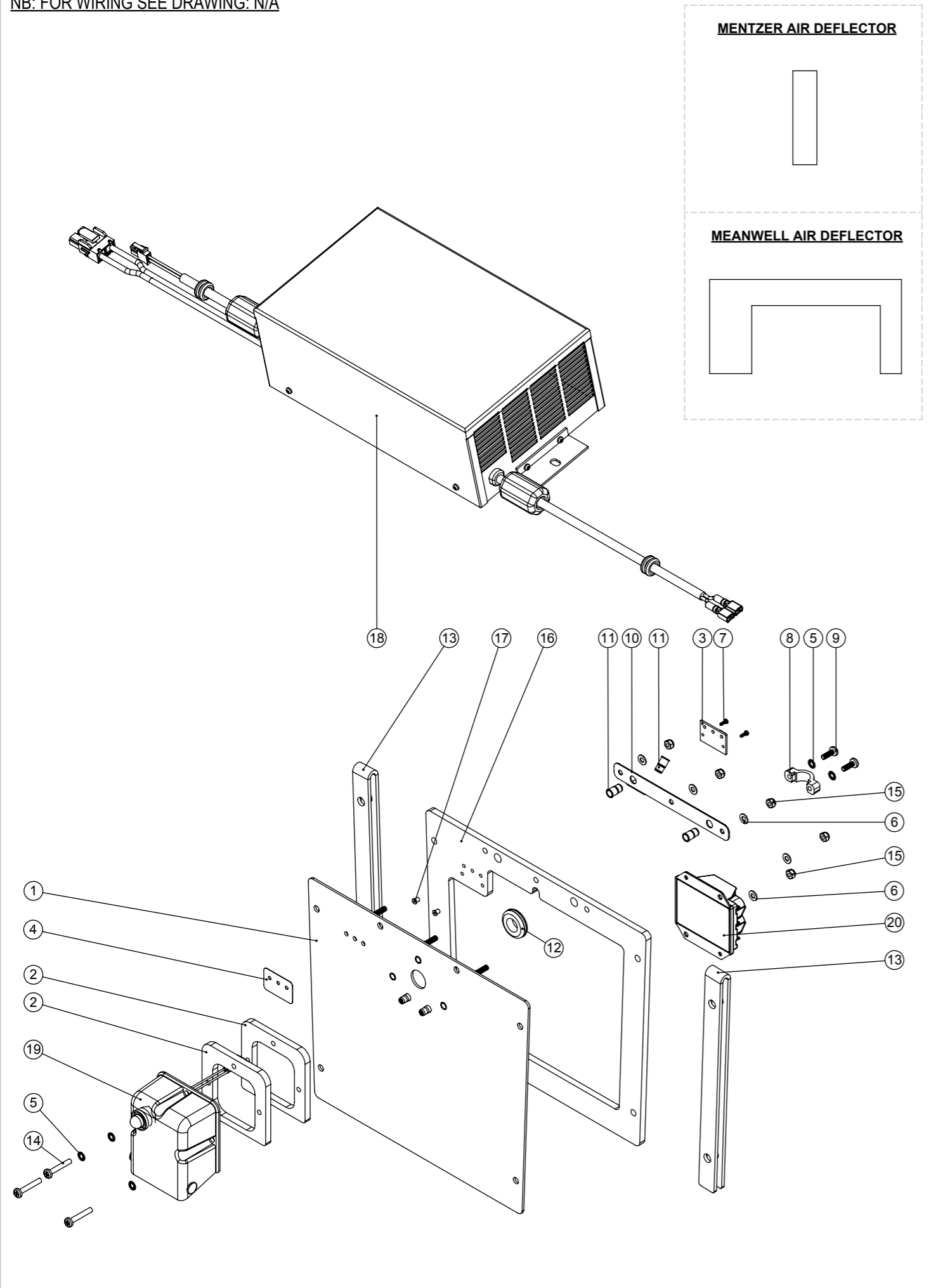
*SHOWN IN EXPLODED VIEW

Numatic International Spare Parts

Model No: CRO AC SUPPLY PLATE AND CHARGER ASSY

Internal Code: N/A
 FS DRAWING: DRW-17570 ISS:A13
 15/05/2015

NB: FOR WIRING SEE DRAWING: N/A



Numatic International Spare Parts

Model No: CRO AC SUPPLY PLATE AND CHARGER ASSY

Provisional

ITEM:	PART No:	DESCRIPTION	COMMENTS	QTY.
1	SEE TABLE BELOW	ELECTRONICS FRONT COVER PLATE SUB ASSY		1
2	329595	TOP SOCKET PLATE		2
3	SEE TABLE BELOW	LED CHARGER DISPLAY PCB	MENTZER & MEANWELL ONLY	1
4	208978	CHARGER LIGHTS OVERLAY	MENTZER & MEANWELL ONLY	1
5	291145	M4 SHAKEPROOF WASHER STAINLESS STEEL		5
6	219688	M4 FORM A STAINLESS STEEL WASHER	MENTZER & NORD, QUANTITY - 3	5
7	219978	M2 X 6MM LONG POZI PAN SCREW	MENTZER & MEANWELL ONLY	2
8	227564	PLUG LOCATION CLAMP		1
9	219890	M4 X 12MM LONG POZI PAN STAINLESS STEEL SCREW		2
10	392502	CRO EARTH PLATE		1
11	219558	M5 STAINLESS STEEL NUTSERT		3
12	219735	GROMMET		1
13	280008	FRONT COVER PLATE GASKET		2
14	291165	M4 X 25MM LONG POZI SCREW STAINLESS STEEL		3
15	219687	M4 STAINLESS STEEL NYLON INSERT NUT	MENTZER & NORD, QUANTITY - 3	5
16	392456	ELECTRONICS FRONT COVER SPACER PLATE		1
17	291115	M2 X 4.2MM LONG TAPPEX (071M2)	MENTZER & MEANWELL ONLY	2
18	SEE TABLE BELOW	CHARGER ASSY		1
19	SEE TABLE BELOW	SOCKET COVER ASSEMBLY		1
20	902067	SURGE ARRESTER ASSY	MEANWELL CHARGER ONLY	1

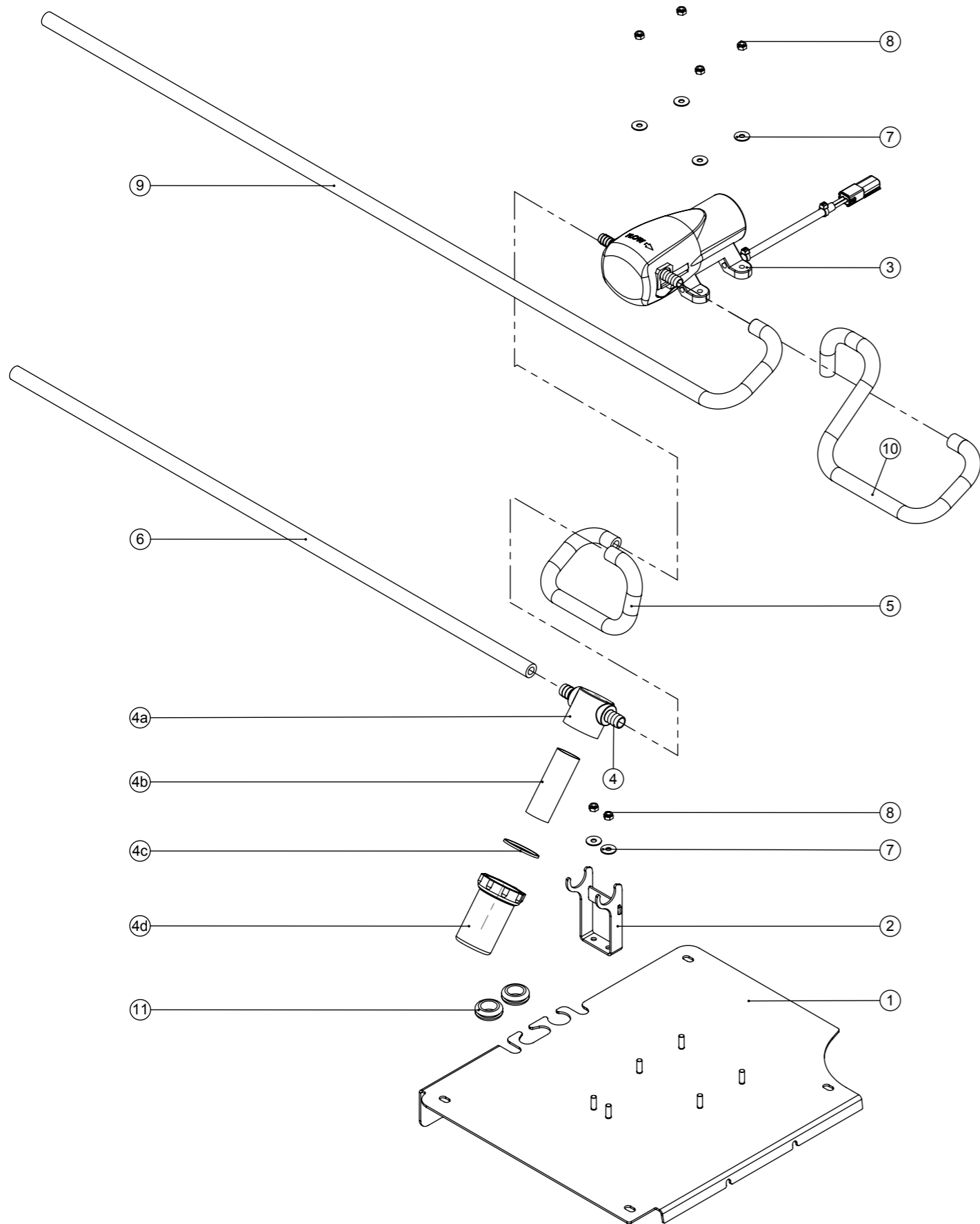
CHARGER VARIATIONS	FRONT COVER PLATE ASSY	CHARGER	CHARGER POWER LEAD	AIR DEFLECTOR	LED CHARGER DISPLAY PCB	SOCKET COVER ASSEMBLY
MENTZER (35A)	330202	230282 (230V)	INC WITH CHARGER	280005	208805	329414 (230V)
MEANWELL (20A)	330202	230261 (100-240V)	901149	280006	280002	329414 (230V) 329441 (120V)
NORD (10A)	392459	323332 (230V) 323333 (115V)	INC WITH CHARGER	NOT REQUIRED	NOT REQUIRED	329414 (230V) 329441 (120V)

Numatic International Spare Parts

Model No: CRO PUMP AND FILTER SUB ASSY

Internal Code: N/A
 MS5 DRAWING: DRW-17506 ISS:A09
 21/09/2016

NB: FOR WIRING SEE DRAWING: N/A



Numatic International Spare Parts

Model No: CRO PUMP AND FILTER SUB ASSY

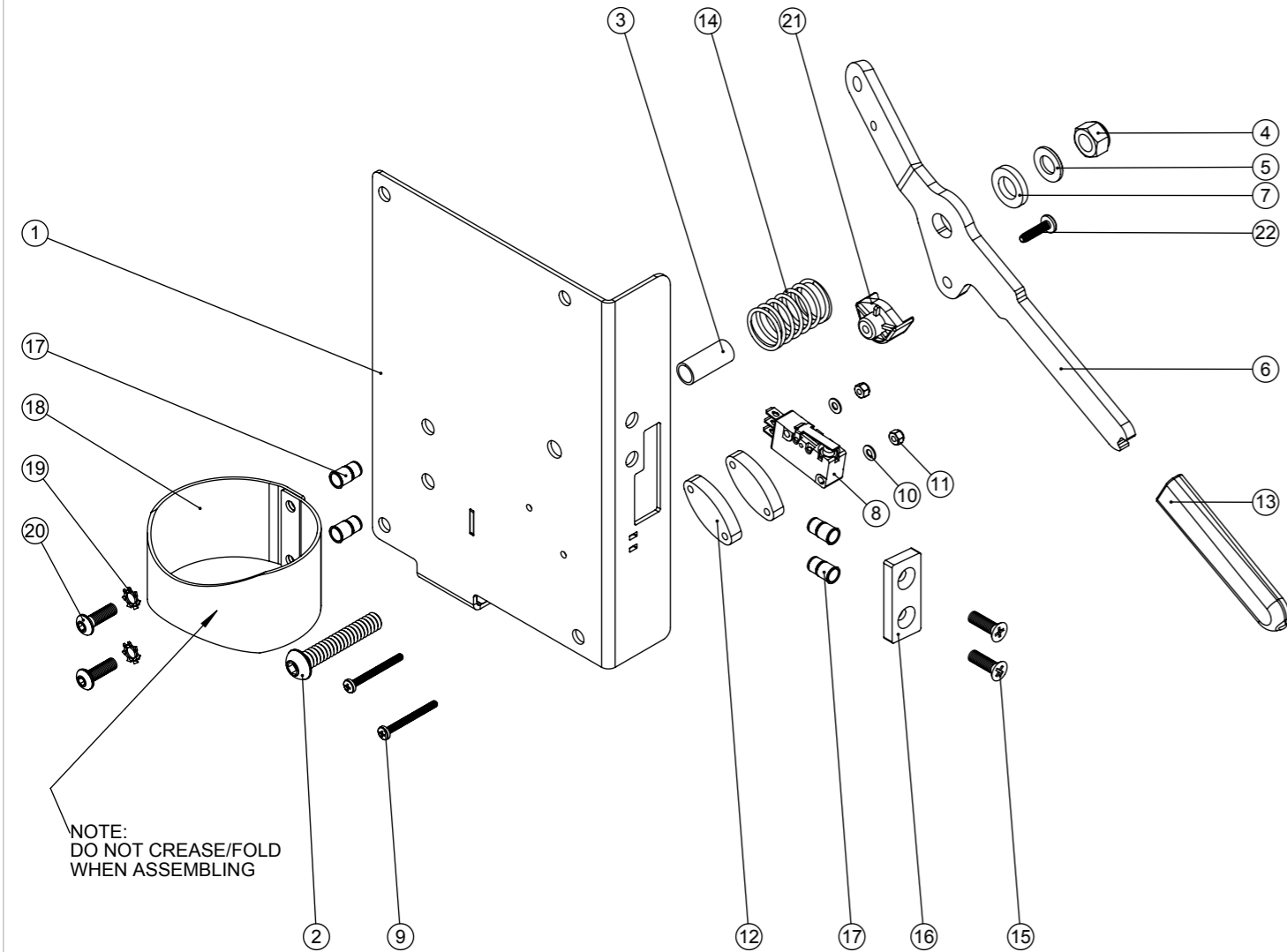
ITEM:	PART No:	DESCRIPTION	COMMENTS:	QTY.
1	392419	CRO PUMP AND FILTER PLATE CLINCH STUD ASSY		1
2	304521	FILTER PLATE ASSEMBLY		1
3	230278	WATER PUMP ASSEMBLY		1
4	208888	EXTENDED STRAINER	INCLUDE 4a,4b,4c,4d	1
4a	208827	STRAINER BLACK TOP	SPARE ITEM	1
4b	208889	EXTENDED STRAINER 50 MESH SCREEN	SPARE ITEM	1
4c	208830	STRAINER GASKET	SPARE ITEM	1
4d	208890	EXTENDED STRAINER CLEAR BOWL	SPARE ITEM	1
5	391525	CRO FILTER TO PUMP TUBE 300MM LG		1
6	391526	CRO TANK TO FILTER TUBE 700MM LG		1
7	219644	M5 FORM G STAINLESS STEEL WASHER		6
8	219633	M5 STAINLESS STEEL NYLON INSERT NUT		6
9	391527	CRO PUMP TO BRUSH DECK TUBE 1030MM LG	CRO8055 ONLY	1
10	904296	CRO PUMP TO FLOW DIVIDER TUBE 470MM LG	CRO8072 ONLY	1
11	219934	GROMMET	ONLY ONE GROMMET RQUIRED FOR CRO8072	2

Numatic International Spare Parts

Model No: FLOOR TOOL LIFTING PLATE ASSEMBLY EXP

304528,903987
DRAWING: DRW-16175 ISS:A06
17/08/16

NB: FOR WIRING SEE DRAWING: WD-0???



Numatic International Spare Parts

Model No: FLOOR TOOL LIFTING PLATE ASSEMBLY EXP

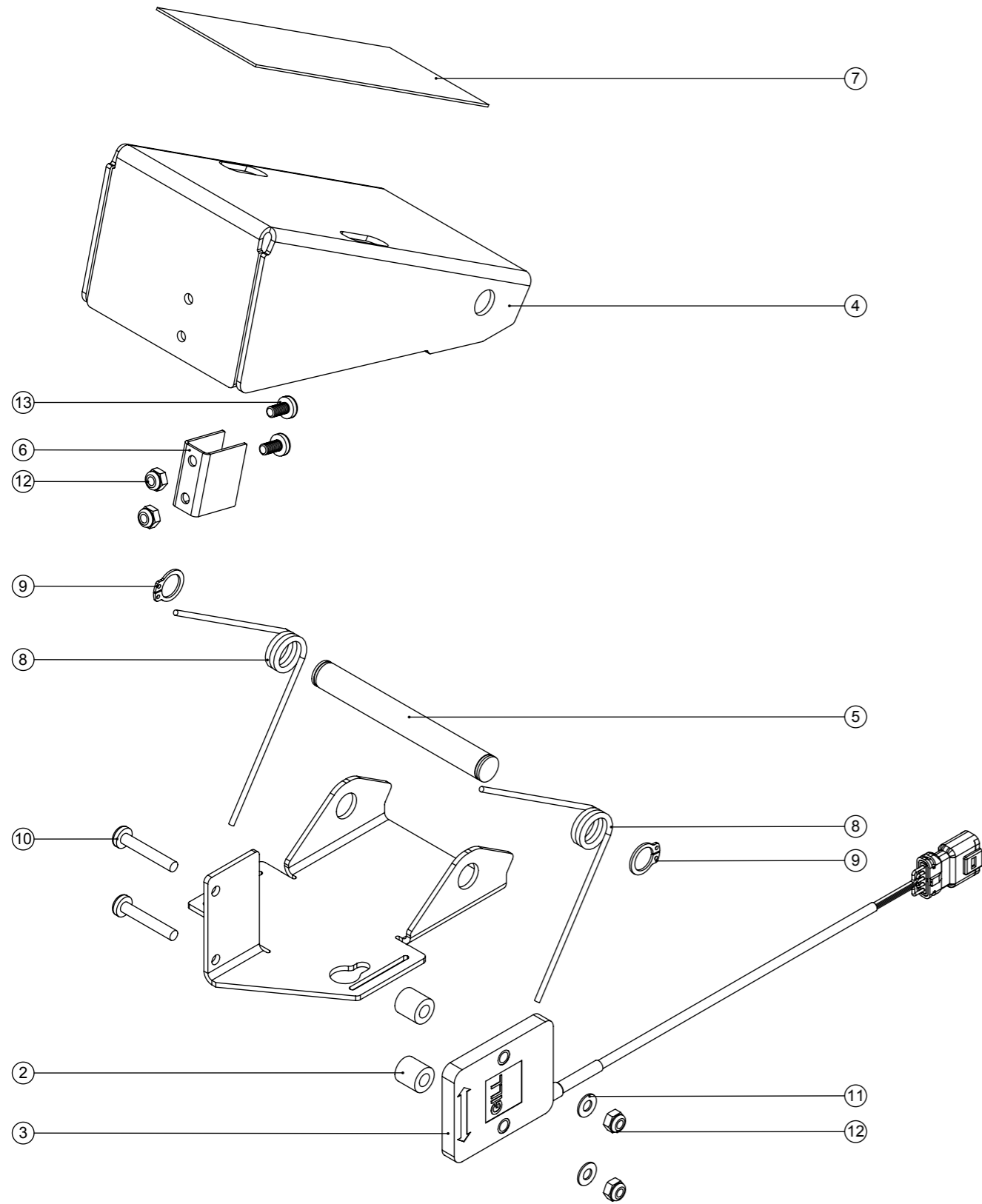
ITEM:	PART No:	DESCRIPTION	COMMENTS:	QTY.
1	330195	FLOOR TOOL LIFTING HANDLE BRACKET WELD ASSY		1
2	219822	M8 X 45MM LONG SOCKET BUTTON STAINLESS STEEL HEAD BOLT		1
3	391191	LEVER PIVOT SPACER (S/S 10MM O/D 8MM I/D X 24MM LONG)		1
4	219639	M8 STAINLESS STEEL NYLON INSERT NUT		1
5	219578	M8 FORM A STAINLESS STEEL WASHER		1
6	392431	FLOOR TOOL LIFTING HANDLE		1
7	219964	NYLON WASHER (18MM O/D X 10.4MM I/D X 3MM THICK)		1
8	208748	IP RATED MICROSWITCH WITH TOGGLE		1
9	291156	M3 X 30MM LONG POZI PAN SCREW STAINLESS STEEL		2
10	219501	M3 FORM A STAINLESS STEEL WASHER		2
11	291154	M3 NYLON INSERT NUT STAINLESS STEEL		2
12	392498	6MM SWITCH SPACER		2
13	206991	LEVER HANDLE MOULDING	ONLY FOR 304528	1
	903870	LEVER HANDLE MOULDING (RED)	ONLY FOR 903987 (RED TRIM VERSION)	1
14	219592	COMPRESSION SPRING		1
15	219572	M5 X 16MM LONG POZI COUNTERSUNK STAINLESS STEEL SCREW		2
16	208985	NYLON GUIDER		1
17	219558	M5 STAINLESS STEEL NUTSERT		4
18	392438	BOTTLE PLATE	SEE NOTE	1
19	291020	M5 STAINLESS STEEL EXTERNAL SHAKEPROOF LOCK WASHER		2
20	219785	M5 X 16MM LONG BUTTON HEAD STAINLESS STEEL SCREW		2
21	903644	CRO LIFTING MECH CAM		1
22	219370	No8 X 5/8 INCH LONG PLASTITE STAINLESS STEEL SCREW		1

Numatic International Spare Parts

Model No: ACCELERATOR PEDAL ASSY (EDAC CONNECTOR)

Internal Code: 330211,903857
 MS5 DRAWING: DRW-18638 ISS:A05
 08/08/16

NB: FOR WIRING SEE DRAWING: N/A



Numatic International Spare Parts

Model No: ACCELERATOR PEDAL ASSY (EDAC CONNECTOR)

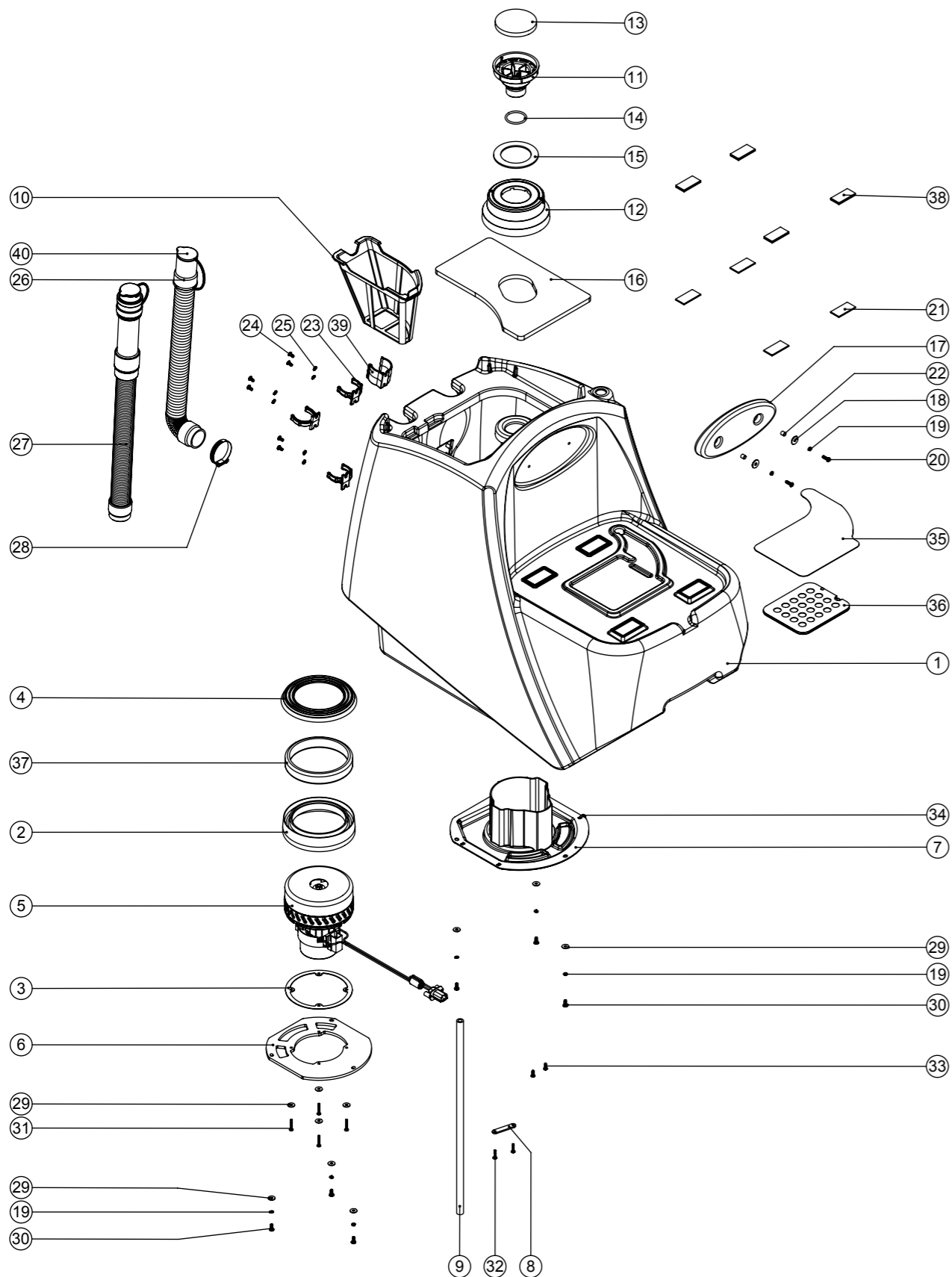
ITEM:	PART No:	DESCRIPTION	COMMENTS:	QTY.
1	329841	ACCELERATOR HINGE PLATE		1
2	219574	NYLON SPACER		2
3	323285	GILL SENSOR ASSEMBLY C/W EDAC 5 WAY PLUG		1
4	329840	ACCELERATOR PEDAL COVER		1
5	208046	CIRCLIP BAR		1
6	404051	GILL SENSOR ACTIVATOR PLATE (PAINTED ANTHRACITE GREY)		1
7	391222	ACCELERATOR GRIP PAD	ONLY FOR 330211	1
	903855	ACCELERATOR GRIP PAD (RED)	ONLY FOR 903857 (RED TRIM VERSION)	1
8	208047	TORSION SPRING (LEFT HAND)		2
9	219586	10MM EXTERNAL CIRCLIP		2
10	291165	M4 X 25MM LONG POZI SCREW STAINLESS STEEL		2
11	219688	M4 FORM A STAINLESS STEEL WASHER		2
12	219687	M4 STAINLESS STEEL NYLON INSERT NUT		4
13	219697	M4 X 8MM LONG POZI PAN STAINLESS STEEL SCREW		2

Numatic International Spare Parts

Model No: MINI RIDE ON TOP TANK ASSEMBLY EXP

Internal Code: 599464, 903724
 DRAWING: DRW-15376 ISS:A07
 MS5 11/10/16

NB: FOR WIRING SEE DRAWING: N/A



Numatic International Spare Parts

Model No: MINI RIDE ON TOP TANK ASSEMBLY EXP

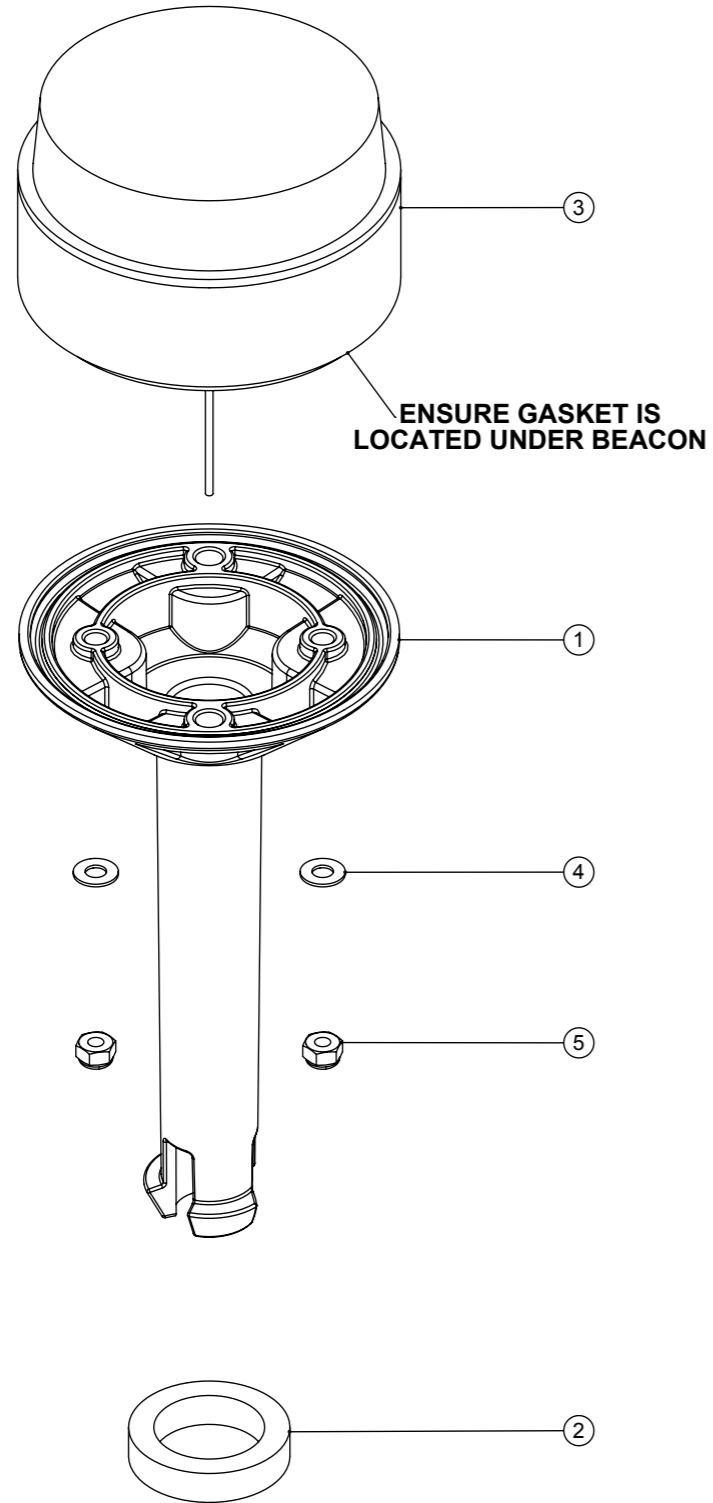
ITEM:	PART No:	DESCRIPTION	COMMENTS:	QTY.
1	237611	MINI RIDE ON TOP TANK BLUE	CRO8055 ONLY	1
	903722	MINI RIDE ON TOP TANK GRAPHITE	CRO8055G & CRO8072 ONLY	1
2	202069	BOTTOM MOTOR GASKET		1
3	202139	MOTOR GASKET		1
4	202077	BOTTOM MOTOR GASKET		1
5	323258	VAC MOTOR 24V WITH PLUG AND FERRITE		1
6	392374	MOTOR MOUNT PLATE		1
7	237620	EXHAUST DIVERTER MOULDING		1
8	392496	WIRE RETAINER		1
9	391528	EXHAUST DIVERTER DRAIN HOSE 500MM LG		1
10	207000	GRIT FILTER BASKET		1
	903542	GRIT FILTER BASKET (RED)	CRO8055G & CRO8072 ONLY	1
11	237618	AIR FILTER MOULDING		1
12	237619	VAC SHUT OFF MOULDING		1
13	208861	AIR FILTER		1
14	208860	O RING 39MM ID X 3.5MM DIA.		1
15	208858	LOWER SEALING RING		1
16	208980	CRO FOAM PAD		1
17	208864	BACK PAD MOULDING		1
18	291118	M5 STAINLESS STEEL WASHER 19MM OD		2
19	219861	M5 SINGLE COIL STAINLESS STEEL WASHER		8
20	219785	M5 X 16MM LONG BUTTON HEAD STAINLESS STEEL SCREW		2
21	208865	VELCRO LOOP 50 X 25 SELF ADHESIVE BACKED		4
22	208475	8MM SPACER		2
23	237754	35-38MM HOSE CLIP	ONLY 2X USED ON CRO8055G & CRO8072	3
24	291004	M5 X 10MM LONG STAINLESS STEEL BUTTON HEAD SCREW		6
25	291020	M5 STAINLESS STEEL EXTERNAL SHAKEPROOF LOCK WASHER		6
26	280017	35MM X 380MM LONG 3:1 STRETCH HOSE C/W CAP & STRAP (SHORT CUFF)	CRO8055 ONLY	1
27	902468	35MM X 180MM STRETCH HOSE (3:1) C/W ADJUSTABLE CUFF + CAP	CRO8055G & CRO8072 ONLY	1
28	219919	32MM-50MM STAINLESS STEEL HOSE CLIP		1
29	219644	M5 FORM G STAINLESS STEEL WASHER		10
30	219740	M5 X 12MM LONG STAINLESS STEEL POZI PAN SCREW		6
31	219369	No8 X 1 INCH LONG POZI PAN STAINLESS STEEL PLASTITE SCREW		4
32	219568	NO8.3/4 INCH LG.POZI-PAN.SCREW.STAINLESS STEEL.PLASTITE		2
33	219569	NO8.1/2 INCH. LG.POZI-PAN.SCREW.STAINLESS STEEL.PLASTITE		2
34	220007	BLACK CABLE TIE		2
35	208983	SEAT SWITCH FLEXIBLE MEMBRANE		1
36	323290	PRESSURE PAD		1
37	208981	MOTOR SPACER		1
38	280003	50MM X 25MM BACK TO BACK (HOOK & LOOP)		4
39	237382	ACETAL HOSE CLIP MOULDING	CRO8055G & CRO8072 ONLY	1
40	900903	HOSE CLOSURE REPLACEMENT KIT (35MM-38MM STRETCH HOSE)	SPARE ITEM	1

Numatic International Spare Parts

Model No: BEACON MOUNT ASSY

Internal Code: N/A
DRAWING: DRW-17381 ISS:A03
PRO 15/05/2015

NB: FOR WIRING SEE DRAWING: N/A



Numatic International Spare Parts

Model No: BEACON MOUNT ASSY

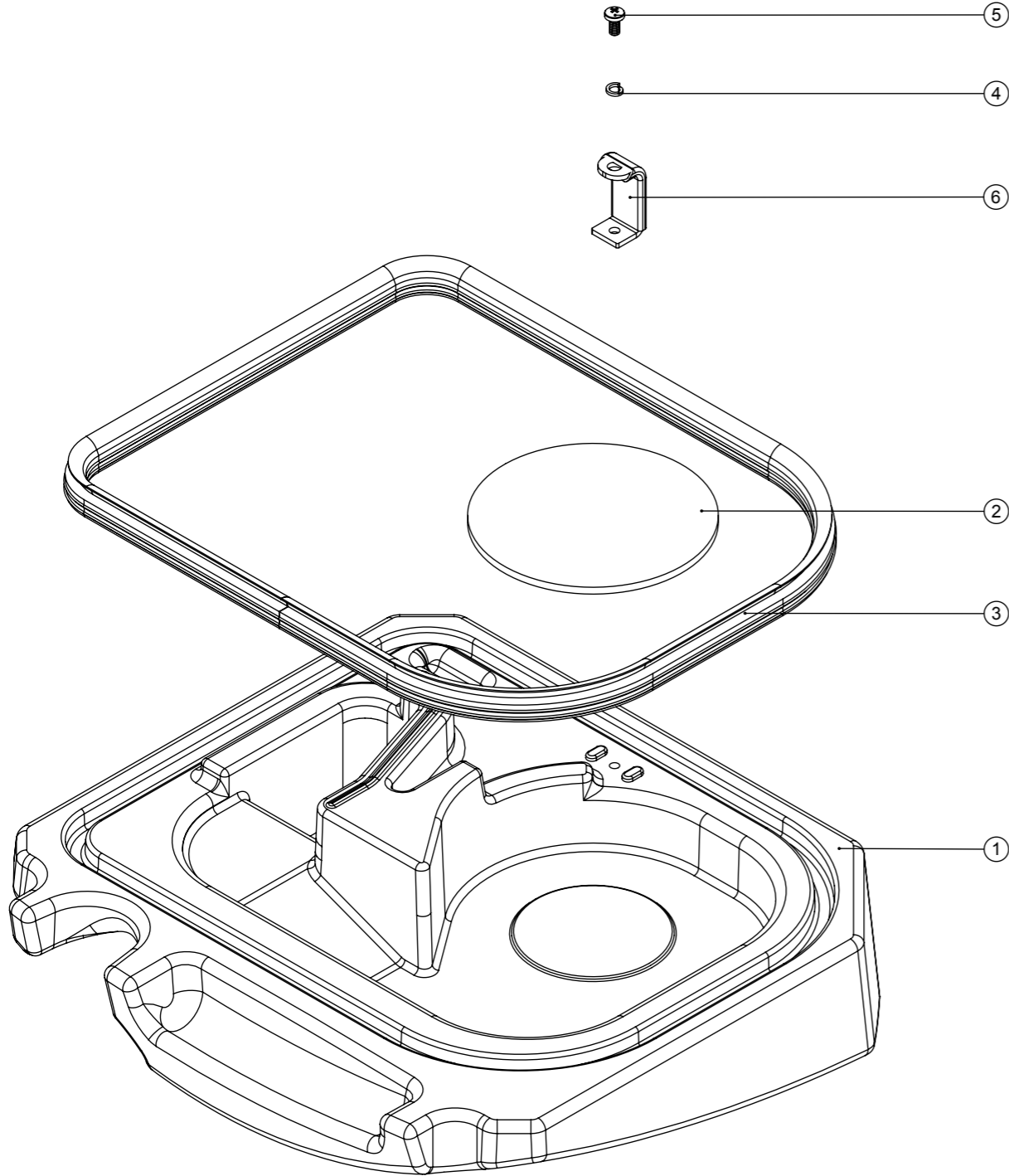
ITEM:	PART No:	DESCRIPTION	COMMENTS:	QTY.
1	237681	BEACON MOUNT		1
2	208984	32MM O/D X 22MM I/D X 7MM SELF ADHESIVE GASKET		1
3	208867	FLASHING XENON BEACON X80 SERIES		1
4	219688	M4 FORM A STAINLESS STEEL WASHER		2
5	219687	M4 STAINLESS STEEL NYLON INSERT NUT		2

Numatic International Spare Parts

Model No: CRO SEPARATOR ASSY

Internal Code: 599520, 903726
 MS5 DRAWING: DRW-17590 ISS:A05
 11/10/16

NB: FOR WIRING SEE DRAWING: N/A



Numatic International Spare Parts

Model No: CRO SEPARATOR ASSY

ITEM:	PART No:	DESCRIPTION	COMMENTS:	QTY.
1	237614	MINI RIDE ON SEPARATOR	CRO8055 ONLY	1
	903725	MINI RIDE ON SEPARATOR GRAPHITE	CRO8055G & CRO8072 ONLY	1
2	208899	UPPER SEALING DISC		1
3	304503	1045mm LONG SEALING STRIP		1
4	219861	M5 SINGLE COIL STAINLESS STEEL WASHER		1
5	219668	M5 X 10MM LONG POZI PAN STAINLESS STEEL SCREW		1
6	330200	CRO SEPARATOR BRACKET ASSY		1

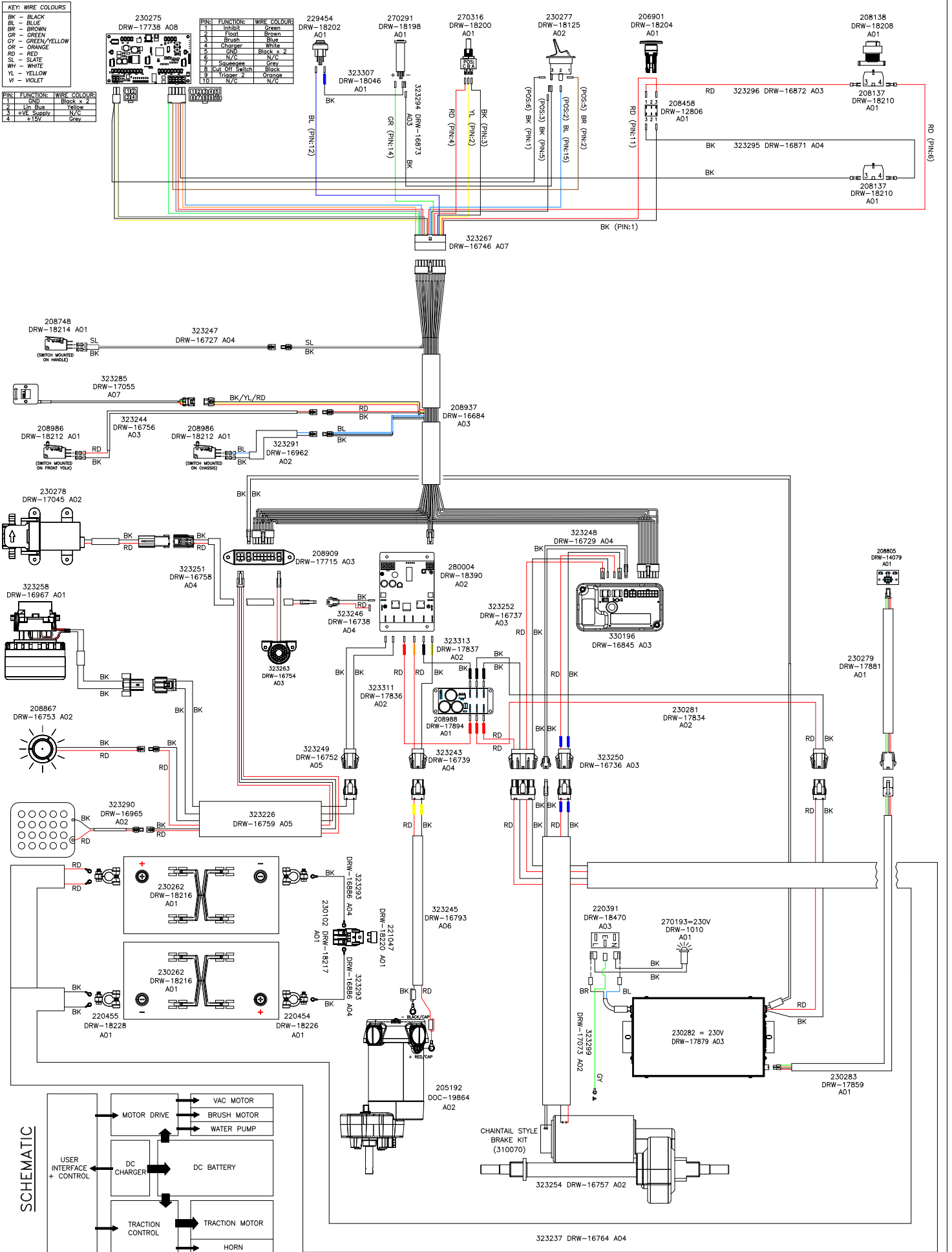
WIRING DIAGRAM

COMP. No
123452

DRG. No
DRW-17042

WIRING DIAGRAM.TWINTEC.1S.3WCR.230.56.TD.PLG

ISSUE	REVISION	DRAWN	APPD.	DATE
A10	DISPLAY PCB 230275 REVISION NOW A08 & DC DRIVE PCB 280004 REVISION NOW A02	AM	MB	10/11/2015



WIRING DIAGRAM

COMP. No
123454

DRG. No
DRW-18115

WIRING DIAGRAM.TWINTEC.1S.3WCR.UNI.56.TD.PLG

ISSUE	REVISION	DRAWN	APPD.	DATE
A13	DISPLAY PCB 230275 REVISION NOW A08 & DC DRIVE PCB 280004 REVISION NOW A02	AM	MB	10/11/2015

KEY: WIRE COLOURS

BK	-	BLACK
BL	-	BLUE
BR	-	BROWN
GR	-	GREEN
GY	-	GREEN/YELLOW
OR	-	ORANGE
RD	-	RED
SL	-	SLATE
WH	-	WHITE
YL	-	YELLOW
W	-	VIOLET

1	INHIBIT	GREEN
2	STOP	BROWN
3	BRUSH	BLUE
4	CHOPPER	WHITE
5	CHP	BLACK x 2
6	N/C	N/C
7	SPRINGS	GRAY
8	CUT OFF SWITCH	BLACK
9	TRIGGER	ORANGE
10	N/C	N/C

1	LINE BUS	YELLOW
2	+VE SUPPLY	N/C
3	+12V	GRAY

