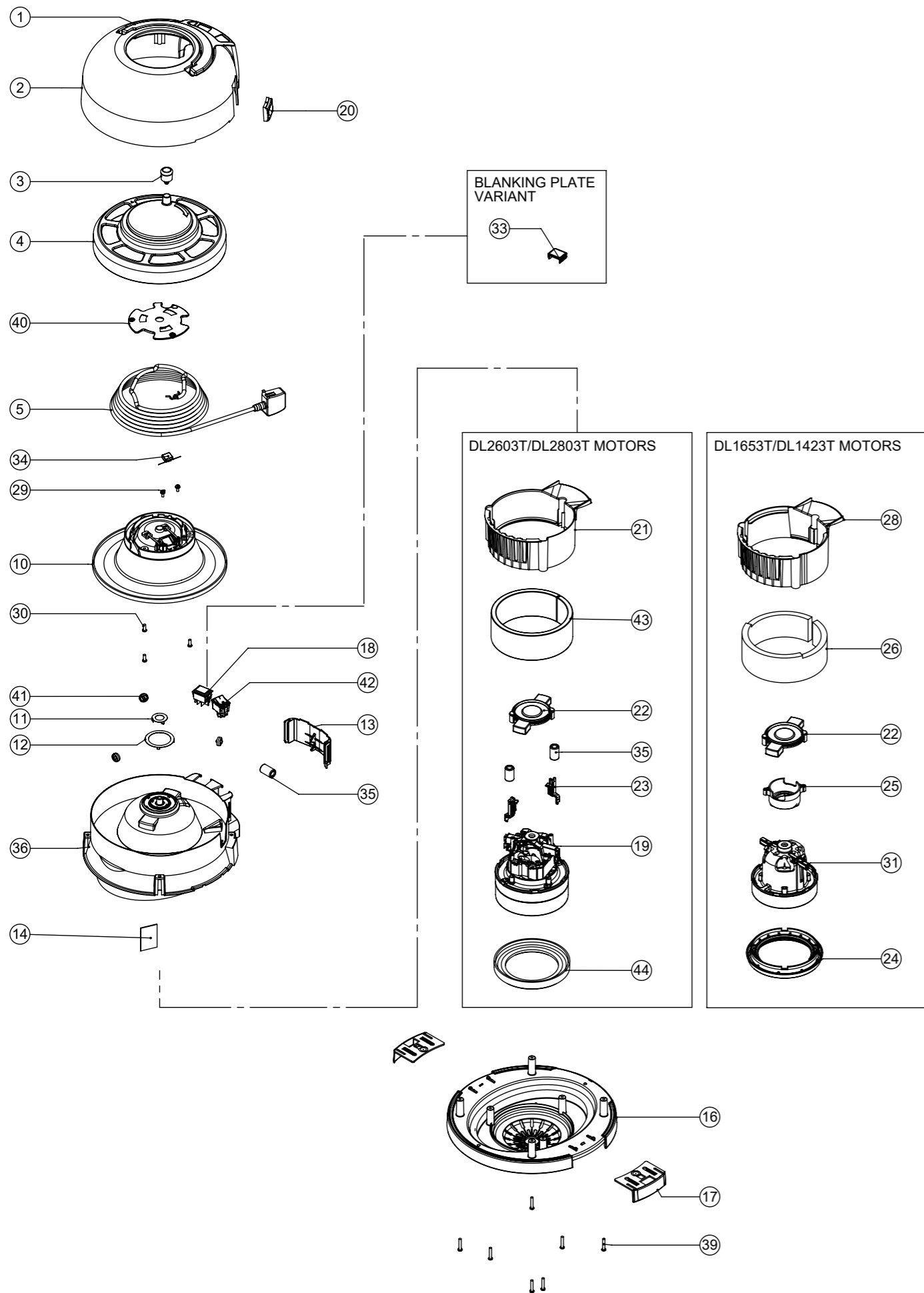


# Numatic International Spare Parts

**Model No:** HEAD STYLE 1 ASSEMBLY 1/2-STAGE 1-SPEED EXPLODED

**Models:** HVR, HET, HHR, HVX, HVR\*M, VNR, NRV, HDK, HDX, HDH, EVR

910980  
DRAWING: DRW-16098 ISS:A27  
07/11/201  
9



# Numatic International Spare Parts

**Model No:** HEAD STYLE 1 ASSEMBLY 1/2-STAGE 1-SPEED EXPLODED

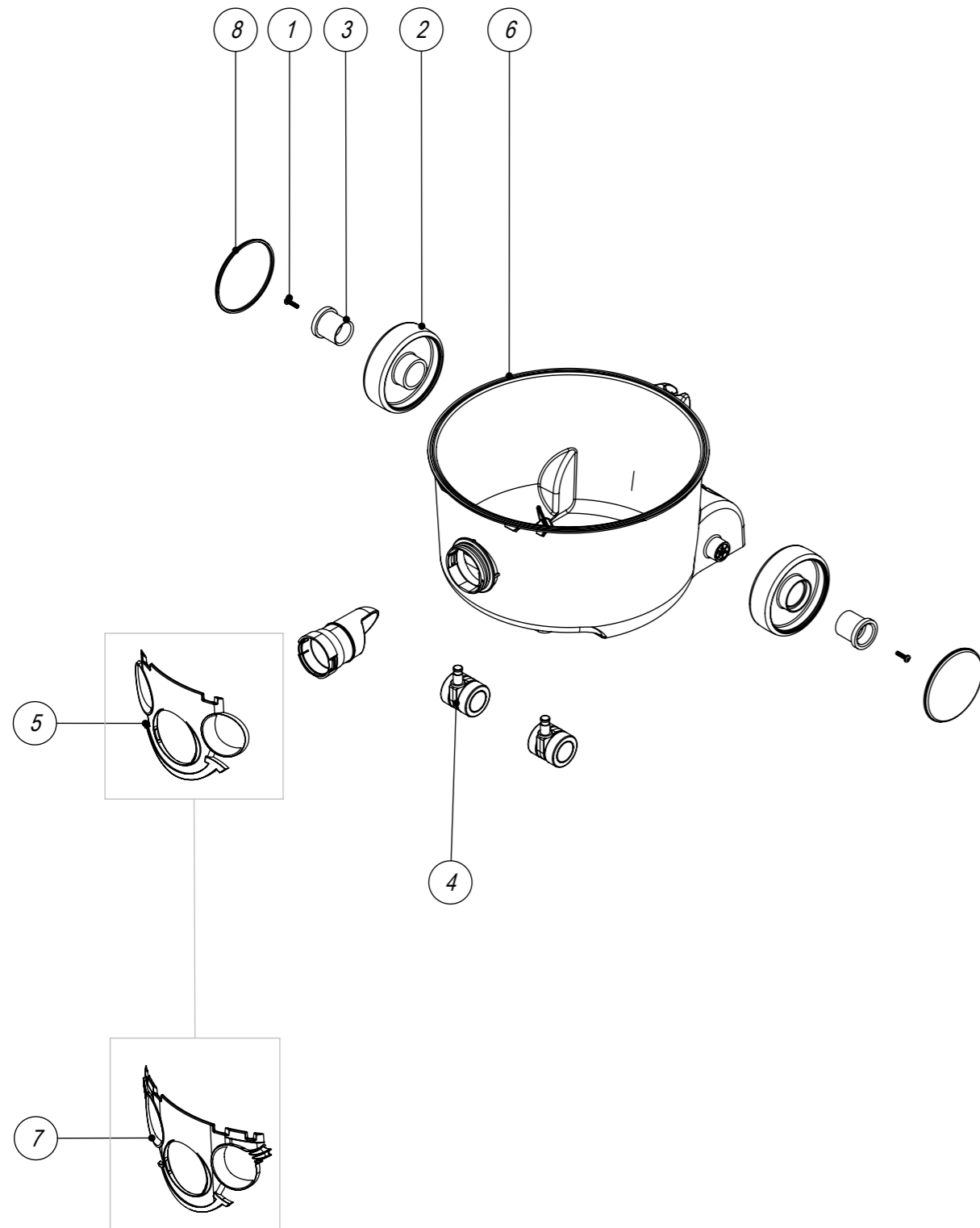
ITEM:	PART No:	Description	QTY.	COMMENTS:
1	227120	HANDLE - HVR/HET/NRV	1	
2	-	COVER	1	CONTACT NUMATIC FOR DETAILS
3	229617	CABLE REEL WINDER KNOB ASSY	1	
4	227133	CABLE REEL COVER	1	
5	236115	10.0MT X 0.75MM X 2 CORE (H05 V2V2-F) UK PLUG	1	CONTACT NUMATIC FOR MORE DETAILS IF REQUIRED
	236116	12.5MT x 1MM x 2 CORE (H05 V2V2-F) UK PLUG		
	236150	10.0MT x 1MM x 2 CORE (H05 V2V2-F) EURO PLUG		
	236151	12.5MT x 1MM x 2 CORE (H05 V2V2-F) EURO PLUG		
10	206491	CABLE REEL MOULDING	1	
11	227141	INNER CONTACT RING	1	
12	227142	OUTER CONTACT RING	1	
13	229623	SWITCH COVER	1	
15	208951	BLANKING PLATE	1	NOTCHED VERSION USED WITH DL2603T/DL28037
16	237606	BOTTOM MOTOR HOUSING (BI-MATERIAL)	1	
17	229622	TOGGLE (BI-MATERIAL)	2	
18	208885	NEON INDICATOR (EVEREL, B71121G000000)	1	
19	205740	230V 2 STAGE 600W ECO THRO FLOW FAN MOTOR (DL2603T) TCO	1	
	205640	230V 2 STAGE 800W ECO THRO FLOW FAN MOTOR (DL2803T) TCO		
20	237687	BLACK CABLE ENTRY	1	
21	229621	AIR GUIDE	1	
22	229614	MOTOR PLATE BI -MATERIAL	1	
23	208955	CLIP RETAINER FERRITE BEAD (DL2 MOTOR)	2	
24	237089	BOTTOM MOTOR GASKET - CUP MOTOR	1	
25	237480	ADAPTOR MOTOR (DL1 603T)	1	
26	203038	WRAP-ACOUSTIC	1	
28	237674	AIRGUIDE (DL1 TYPE)	1	
29	291151	M4 X 10MM LONG T20 SEMS SCREW Z/PL - PRODUCT CODE 8.8 - TX20 HEAD	2	
30	291152	NO8. 1/2 INCH LG. T20. SCREW. Z/PL. PLASTITE	3	
31	205840	230V SINGLE STAGE THRO FLOW FAN MOTOR (DL1 653T) TCO (620)	1	
	901792	230V SINGLE STAGE THRO FLOW FAN MOTOR (DL1 423T) TCO (420)		
33	237082	BLANKING PLUG - ROCKER SWITCH	1	
34	230096	SUPPRESSOR CAPACITOR ASSEMBLY WITH DISCHARGE RESISTOR (AS SUPPLIED)	1	
35	230097	AXIAL FERRITE BEAD 17.5 X 9.5 X 28.5 (REF 742 700 9)	1	
36	237745	TOP MOTOR HOUSING (HEAD STYLE 1 AND 9) WITH PCB SUPPORT	1	
39	291082	#8 SCREW 1"L T20 PAN HEAD P/L THREAD FORMING	7	
40	905922	REELER PLATE - STANDARD (STAR LOCK & BLANK)	1	
41	901009	ROLLER WHEEL	3	
42	230253	EVEREL ROCKER SWITCH	1	
43	203020	NVQ/NQS POD SIDE FELT (LAMB MOTOR)	1	
44	227882	TWO STAGE BOTTOM MOTOR GASKET (AMETEK MOTOR)	1	

WIRING DIAGRAMS TBC

**Numatic International Spare Parts**

**Model No:** DRUM STYLE 9 - EXPLODED DRAWING

Internal Code: 902734,902717  
 DRAWING: DRW-21170 ISS:A04  
 07/03/2019



**Numatic International Spare Parts**

**Model No:** DRUM STYLE 9 - EXPLODED DRAWING

ITEM:	PART No:	Description	QTY.	COMMENTS:
1	219105	No8 X 5/8 INCH LONG POZI PAN PLASTITE SCREW	2	
2	227640	2 SHOT WHEEL ASSEMBLY	2	
3	227868	WHEEL HUB FOR 2 SHOT WHEEL	2	
4	204000	40MM PU-TYRED BLACK TWIN WHEEL CASTOR SHORT STEM	2	
5	325958	RED HENRY SNAP FIT FACE	1	
6	-	DRUM STYLE 9 (DRUM MOULDING)	1	CONTACT NUMATIC FOR DETAILS
7	237311	HETTY FACE MOULDING	1	
8	-	WHEEL TRIM	2	CONTACT NUMATIC FOR DETAILS
9	237119	FRONT FIT BAG CONNECTOR	1	