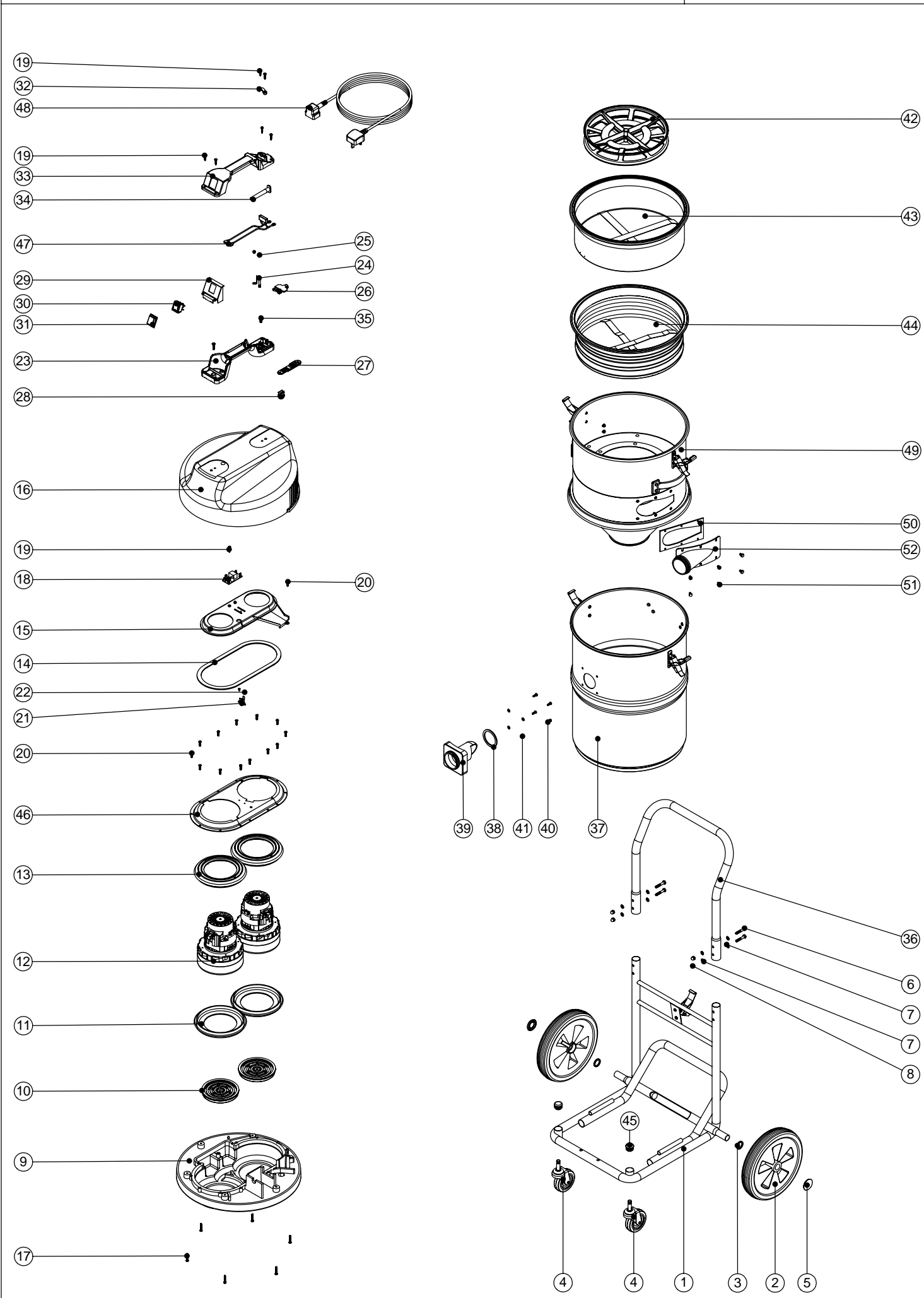


Numatic International Spare Parts

Model No: NTD750C-2 EXPLODED DRAWING

234414
DRAWING: EXP-0845 ISS:A02
19/06/2006



Numatic International Spare Parts

Model No: NTD750C-2 EXPLODED DRAWING

POS:	ITEM NO:	DESCRIPTION:	COMMENTS:
1	402136	HEAVY DUTY FIXED CHASSIS (PAINTED BLACK)	
2	204028	10 INCH WHEEL	
3	219505	NYLON WASHER	
4	204060	3 INCH CASTOR	
5	219504	STARLOCK PUSH ON FASTENER	
6	219064	M6 X 35MM LONG HEX BOLT	
7	219007	M6 FORM B WASHER	
8	219080	M6 DOMENUT	
9	301048	PROCESSED BOTTOM MOTOR HOUSING	
10	206010	FAN GUARD	
11	202005	MOTOR BOTTOM GASKET	
12	205411	240V 2 STAGE D.I BYPASS ACUSTEK MOTOR (BL21104)(MARKED 230V)	240V VERSION
	205410	220V 2 STAGE D.I BYPASS ACUSTEK MOTOR (BL21102)(MARKED 230V)	220V VERSION
	205409	120V 2 STAGE D.I BYPASS ACUSTEK MOTOR (BL21101)	115V VERSION
13	202003	TOP MOTOR GASKET	
14	202012	GASKET	
15	225154	AIR SEPARATOR DUPLEX	
16	227043	COVER MOULDING	
17	219369	No8 X 1 INCH LONG POZI PAN STAINLESS STEEL PLASTITE SCREW	
18	220555	230V DELAY START MODULE	220/240V VERSION
	220556	115V DELAY START MODULE	115V VERSION
19	219107	No6 X 5/8 INCH LONG POZI PAN PLASTITE SCREW	
20	219370	No8 X 5/8 INCH LONG PLASTITE STAINLESS STEEL SCREW	
21	220532	THERMOSTAT	
22	219491	M5 X 3MM LONG POZI PAN TAPTITE SCREW	
23	320835	HANDLE BASE MOULDING + INSERTS	
24	206562	CONTACT PIN	
25	219090	M4 X 8MM LONG POZI PAN SEMS SCREW	
26	227632	TERMINAL COVER & CLAMP	
27	227636	STRAIN RELIEF	
28	227637	CABLE CLIP	
29	227635	SWITCH MOUNTING BRACKET (1 SWITCH)	
30	220552	RED ROCKER SWITCH	
31	206573	SWITCH COVER (PLUG HANDLE)	
32	227564	PLUG LOCATION CLAMP	
33	227623	HANDLE COVER (10 AMP / 3 PIN / 1 SWITCH)	
34	220923	STRESS RELIEF	
35	219546	M5 X 20MM LONG POZI PAN SEMS SCREW	
36	402200	BLACK PLASTIC COATED HANDLE	
37	400143	750 DRUM PAINT SILVER	
38	202027	HOSE FLANGE GASKET	
39	206024	DRY HOSE CONNECTOR FLANGE	
40	219101	No8 X 1/2 INCH LONG POZI PAN PLASTITE SCREW	
41	219003	M5 FORM A STEEL WASHER	
42	209600	DOUBLE 12 INCH FILTER GRID (GROOVED CIRCULAR RIB)	
43	207032	RED FILTER + MOULDING GASKET	
44	207166	WHITE FILTER + RING	
45	20637V	25.4MM TUBE END STOP	
46	325526	TOP MOTOR HOUSING (DUPLEX)	
47	220142	SUPPRESSOR ASSEMBLY	240V VERSION
	230234	SUPPRESSOR ASSEMBLY	220V VERSION
	220558	SUPPRESSOR ASSEMBLY	115V VERSION
48	236010	10.0M X 1.00MM X 3 CORE NUCABLE (UK PLUG)	
	236013	10.0M X 1.00MM X 2 CORE NUCABLE (EURO PLUG)	
	236017	10.0M X 1.00MM X 2 CORE NUCABLE (SWISS PLUG)	
	236021	10.0M X 1.00MM X 2 CORE NUCABLE (SOUTH AFRICAN PLUG)	
	236029	10.0M X 1.00MM X 2 CORE NUCABLE (AUSTRALIAN PLUG)	
	230065	10M X 2CORE X 2.5MM CABLE PLUS 32AMP INDUSTRIAL PLUG	HARDWIRED VERSION
49	401421	CYCLONIC ASSEMBLY	
50	202033	GASKET	
51	219047	M5 X 10MM LONG POZI PAN SEMS SCREW	
52	206043	CYCLONIC INLET CONNECTOR	